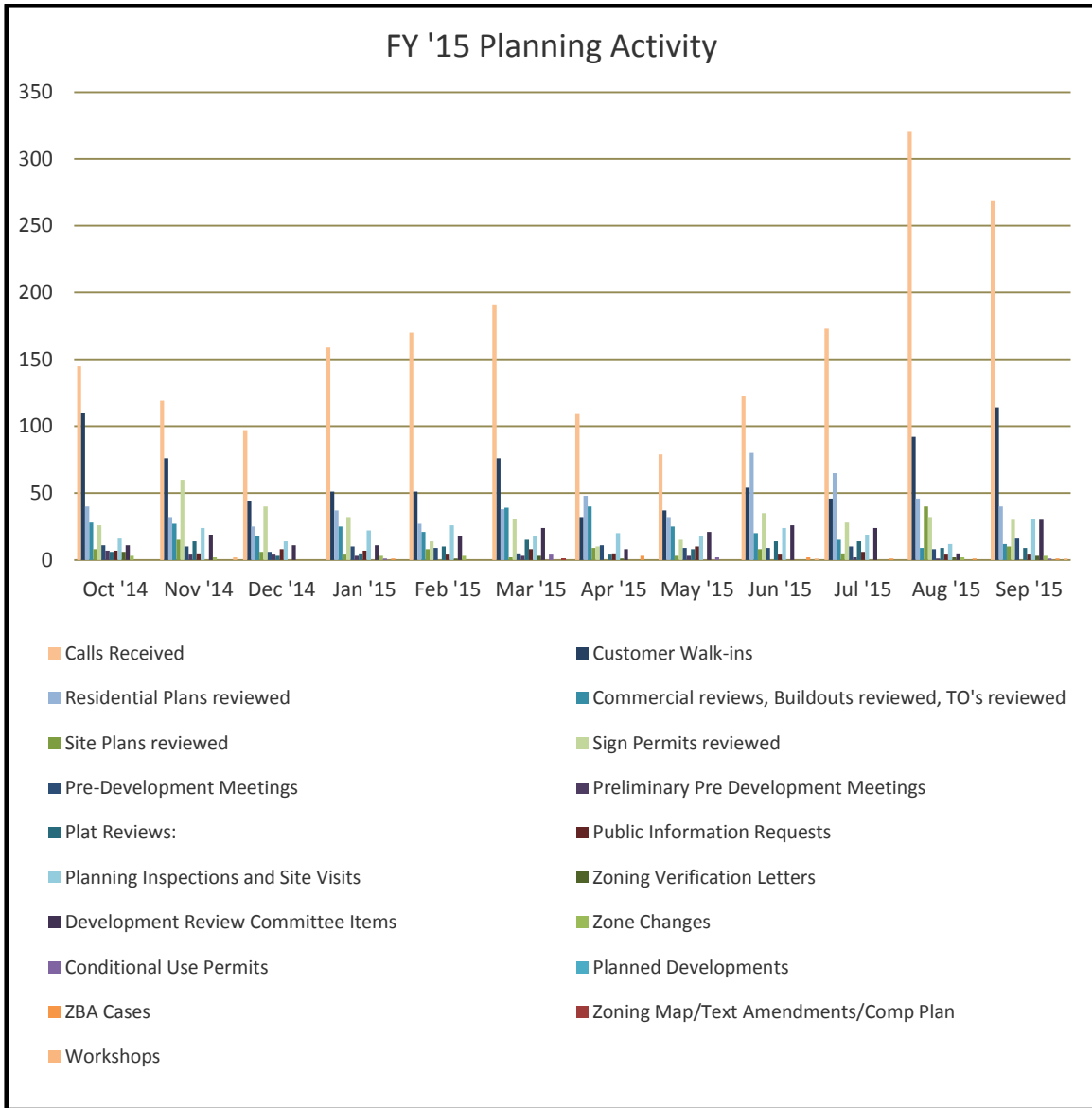


**Planning Division
Monthly Report Fiscal Year 2015
October 2014 - September 2015**

FY 2014-2015	Oct '14	Nov '14	Dec '14	Jan '15	Feb '15	Mar '15	Apr '15	May '15	Jun' 15	Jul '15	Aug '15	Sep '15	YTD '15
Joint Public Hearings Total	2	3	1	2	4	4	1	3	2	0	2	4	28
Zone Changes	2	1	1	1	2	0	0	0	0	0	1	3	11
Conditional Use Permits	0	1	0	1	0	4	1	2	0	0	0	1	10
Planned Developments	0	1	0	0	2	0	0	1	0	0	1	0	5
City Council Public Hearing	0	1	0	0		0	0	2	0		1	0	4
ZBA Cases ¹	0	0	0	1	0	0	3	0	2	1	1	1	9
Pre-Development Meetings	11	10	6	10	9	5	11	9	9	10	8	16	114
Preliminary Pre Development Meetings	7	4	4	3		3	0	3	0	2	1	0	
Plat Reviews: Total	6	14	3	5	10	15	4	8	14	14	9	9	111
Final	5	1	2	3	3	1	0	0	5	4	2	1	
Preliminary	0	3	0	0	2	6	1	0	4	2	0	1	
Minor	0	4	1	2	5	3	2	5	4	8	5	5	
Amending	1	4	0	0	0	0	0	0	0	0	1	0	
Replat	0	1	0	0	0	1	0	1	1	0	1	0	
Master	0	1	0	0	0	0	1	1	0	0	0	1	
Development	0	0	0	0	0	4	0	1	0	0	0	1	
Number of lots	246	386	212	167	268	373	9	12	541	268	101	17	
Zoning Map/Text Amendments/Comp Plan	0	0	0	0	0	1	0	0	0	0	0	0	1
Site Plans reviewed	8	15	6	4	8	2	9	3	8	5	40	10	118
Commercial reviews, Build-outs & TO's	28	27	18	25	21	39	40	25	20	15	9	12	269
Residential Plans reviewed	40	32	25	37	27	38	48	32	80	65	46	40	510
Sign Permits reviewed	26	60	40	32	14	31	10	15	35	28	32	30	353
Planning Inspections and Site Visits	16	24	14	22	26	18	20	18	24	19	12	31	244
Calls Received	145	119	97	159	170	191	109	79	123	173	321	269	1,955
Customer Walk-ins	110	76	44	51	51	76	32	37	54	46	92	114	783
Public Information Requests	7	5	8	7	4	8	5	10	4	6	4	4	72
Zoning Verification Letters	6	0	0	0	1	3	1	0	0	0	2	3	16
Development Review Committee Items	11	19	11	11	18	24	8	21	26	24	5	30	208
Workshops	0	2		0			0	0	1	0	0	1	4



Inspections Services

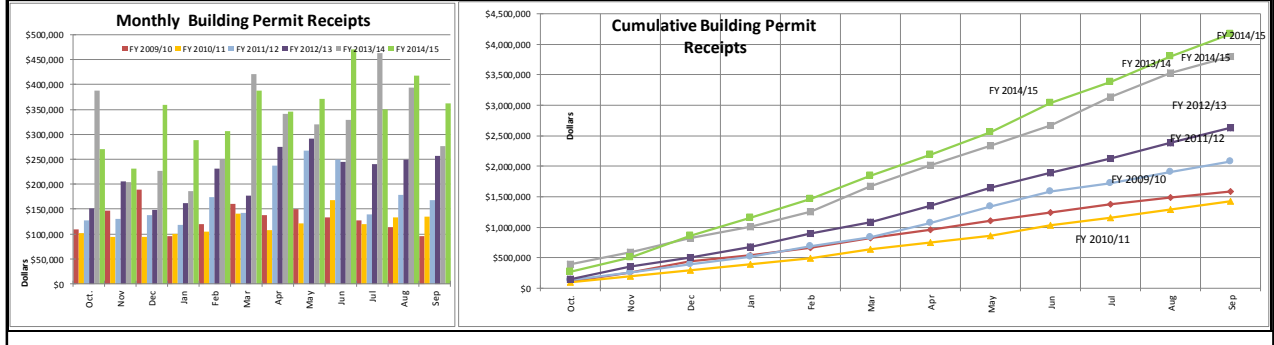
	Oct-14	Nov-14	Dec-14	Jan-15	Feb-15	Mar-15	Apr-15	May-15	Jun-15	Jul-15	Aug-15	Sep-15
Total plans reviewed by Inspection Services Division	110	119	113	111	96	162	138	120	119	112	166	218
Total building inspections	2,957	2,340	2,530	2,719	2,891	3,088	3,197	3,039	3,355	3,495	3,101	3,785
Average number of inspections per inspector	23	24	22	27	29	29	34	30	31	37	35	42
Number of structures demolished	1	3	1	2	3	3	4	4	2	3	2	1
Total permits processed	1,360	1,129	1,365	1,214	1,330	1,656	1,633	1,548	1,800	1,689	1,798	1,664
Open Records Requests	41	23	27	30	25	31	41	25	31	32	27	33

Building Permit Revenue **														City of Pearland, Texas			
	FY 2009/10		FY 2010/11		FY 2011/12		FY 2012/13		FY 2013/14		FY 2014/15						
	Actual Month	YTD	Actual Month	YTD	Actual Month	YTD	Actual Month	YTD	Actual Month	YTD	Actual Month	YTD	Budget Month	YTD	%	YTD Over (Under) Budget Amount	
Oct.	\$108,823	\$108,823	\$101,691	\$101,691	\$127,608	\$127,608	\$151,910	\$151,910	\$387,684	\$387,684	\$270,093	\$270,093	\$112,478	\$112,478	140%	\$157,615	
Nov	\$146,811	\$255,633	\$93,934	\$195,626	\$129,715	\$257,323	\$206,298	\$358,208	\$204,901	\$592,585	\$231,632	\$501,725	\$132,384	\$244,862	105%	\$256,863	
Dec	\$189,803	\$445,436	\$94,143	\$289,769	\$138,626	\$395,949	\$148,216	\$506,424	\$226,921	\$819,507	\$358,942	\$860,668	\$131,014	\$375,876	129%	\$484,791	
Jan	\$95,649	\$541,085	\$100,540	\$390,309	\$118,098	\$514,047	\$162,251	\$668,675	\$186,651	\$1,006,157	\$288,756	\$1,149,424	\$109,381	\$485,257	137%	\$664,167	
Feb	\$119,272	\$660,357	\$104,131	\$494,439	\$174,318	\$688,365	\$231,339	\$900,014	\$249,452	\$1,255,609	\$307,261	\$1,456,685	\$144,389	\$629,646	131%	\$827,039	
Mar	\$160,135	\$820,492	\$141,402	\$635,841	\$141,994	\$830,359	\$177,326	\$1,077,340	\$420,672	\$1,676,282	\$387,972	\$1,844,657	\$142,506	\$772,152	139%	\$1,072,504	
Apr	\$137,433	\$957,926	\$108,340	\$744,181	\$237,090	\$1,067,449	\$274,237	\$1,351,578	\$340,782	\$2,017,064	\$345,518	\$2,190,175	\$173,779	\$945,931	132%	\$1,244,244	
May	\$150,660	\$1,108,586	\$121,065	\$865,246	\$267,729	\$1,335,177	\$292,039	\$1,643,616	\$320,469	\$2,337,532	\$371,396	\$2,561,571	\$190,854	\$1,136,785	125%	\$1,424,786	
Jun	\$133,426	\$1,242,012	\$168,315	\$1,033,561	\$249,292	\$1,584,469	\$244,462	\$1,888,078	\$329,620	\$2,667,152	\$470,462	\$3,032,033	\$182,591	\$1,319,376	130%	\$1,712,656	
Jul	\$128,063	\$1,370,075	\$120,620	\$1,154,181	\$140,095	\$1,724,564	\$240,781	\$2,128,858	\$462,887	\$3,130,039	\$350,811	\$3,382,844	\$144,504	\$1,463,880	131%	\$1,918,964	
Aug	\$113,531	\$1,483,606	\$133,913	\$1,288,094	\$177,908	\$1,902,472	\$249,162	\$2,378,021	\$393,954	\$3,523,992	\$418,012	\$3,800,856	\$154,823	\$1,618,702			
Sep	\$95,182	\$1,578,788	\$135,595	\$1,423,689	\$168,308	\$2,070,780	\$257,241	\$2,635,262	\$275,866	\$3,799,858	\$361,476	\$4,162,331	\$150,648	\$1,769,350			
Change from Previous Year				-9.8%		45.5%		27.3%		44.2%							
													Original BUDGET	\$1,769,350			
													Mid-year Estimate for Budget	\$1,769,350			

The Building Permit Revenue identified in this schedule is compiled from the monthly Cash Receipt report and differs slightly, than what is reported on the General Ledger due to timing.

Amount shown are Actual Fees Collected.

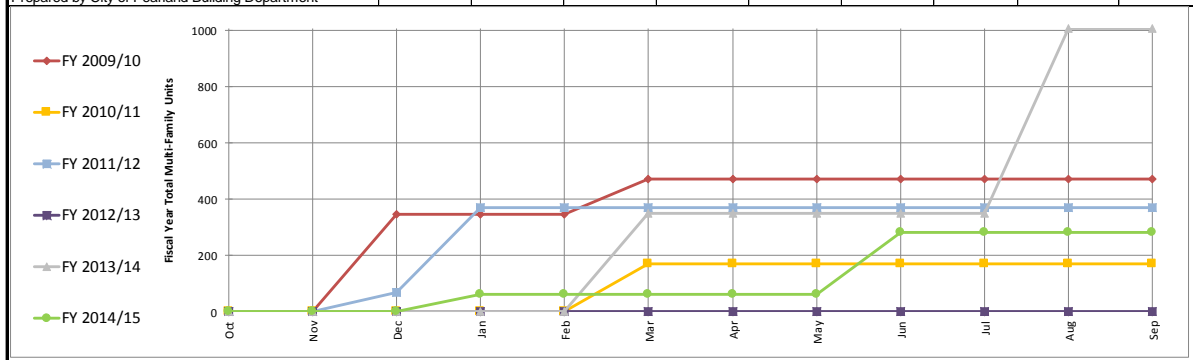
Data from City of Pearland Community Development Department



Multi-family Residential units
City of Pearland, Texas

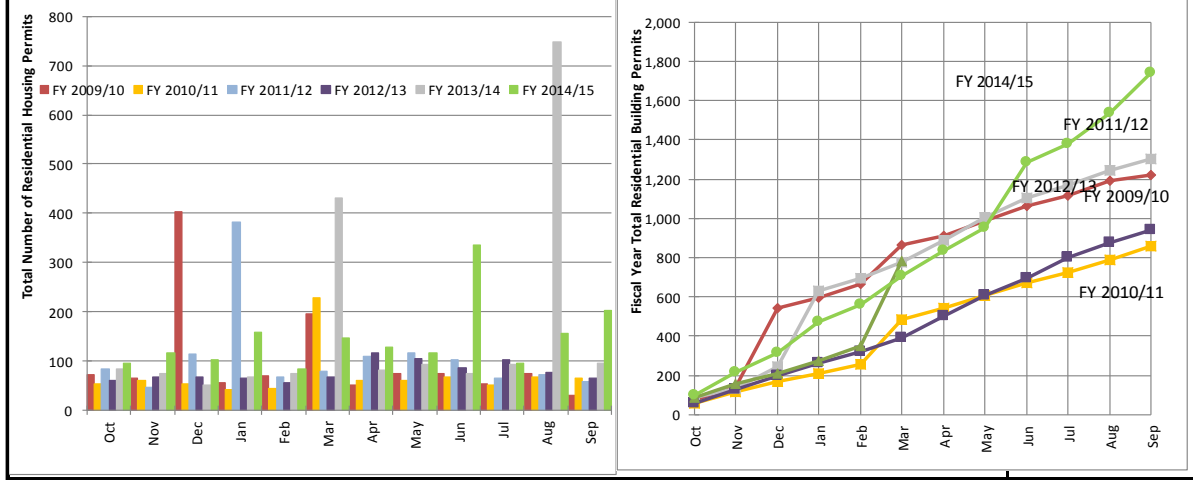
	FY 2009/10		FY 2010/11		FY 2011/12		FY 2012/13		FY 2013/14		FY 2014/15	
	Actual Month	YTD	Actual Month	YTD	Actual Month	YTD	Actual Month	YTD	Actual Month	YTD	Actual Month	YTD
Oct	0	0	0	0	0	0	0	0	0	0	0	0
Nov	0	0	0	0	0	0	0	0	0	0	0	0
Dec	347	347	0	0	70	70	0	0	0	0	0	0
Jan	0	347	0	0	300	370	0	0	0	0	63	63
Feb	0	347	0	0	0	370	0	0	0	0	0	63
Mar	126	473	172	172	0	370	0	0	350	350	0	63
Apr	0	473	0	172	0	370	0	0	0	350	0	63
May	0	473	0	172	0	370	0	0	0	350	0	63
Jun	0	473	0	172	0	370	0	0	0	350	221	284
Jul	0	473	0	172	0	370	0	0	0	350	0	284
Aug	0	473	0	172	0	370	0	0	658	1,008	0	284
Sep	0	473	0	172	0	370	0	0	0	1,008	0	284
Change from Previous Year		N/A		-1		1		-1		N/A		

Prepared by City of Pearland Building Department



Total Housing Units (Single-Family Detached and Multi-Family)												
City of Pearland, Texas												
	FY 2009/10		FY 2010/11		FY 2011/12		FY 2012/13		FY 2013/14		FY 2014/15	
	Actual		Actual		Actual		Actual		Actual		Actual	
	Month	YTD	Month	YTD	Month	YTD	Month	YTD	Month	YTD	Month	YTD
Oct	72	72	55	55	84	84	60	60	84	84	96	96
Nov	65	137	60	115	48	132	69	129	74	158	117	213
Dec	404	541	54	169	114	246	67	196	51	209	103	316
Jan	56	597	42	211	383	629	66	262	67	276	159	475
Feb	70	667	45	256	68	697	57	319	76	352	84	559
Mar	195	862	228	484	79	776	69	388	431	783	147	706
Apr	51	913	60	544	111	887	116	504	81	864	128	834
May	74	987	61	605	116	1,003	106	610	94	958	116	950
Jun	75	1,062	67	672	103	1,106	87	697	75	1,033	335	1,285
Jul	54	1,116	51	723	65	1,171	102	799	93	1,126	96	1,381
Aug	75	1,191	67	790	72	1,243	77	876	748	1,874	157	1,538
Sep	30	1,221	66	856	58	1,301	65	941	95	1,969	203	1,741
Change from Previous Year				-365		445		-360		1,028		

Prepared by City of Pearland Building Department



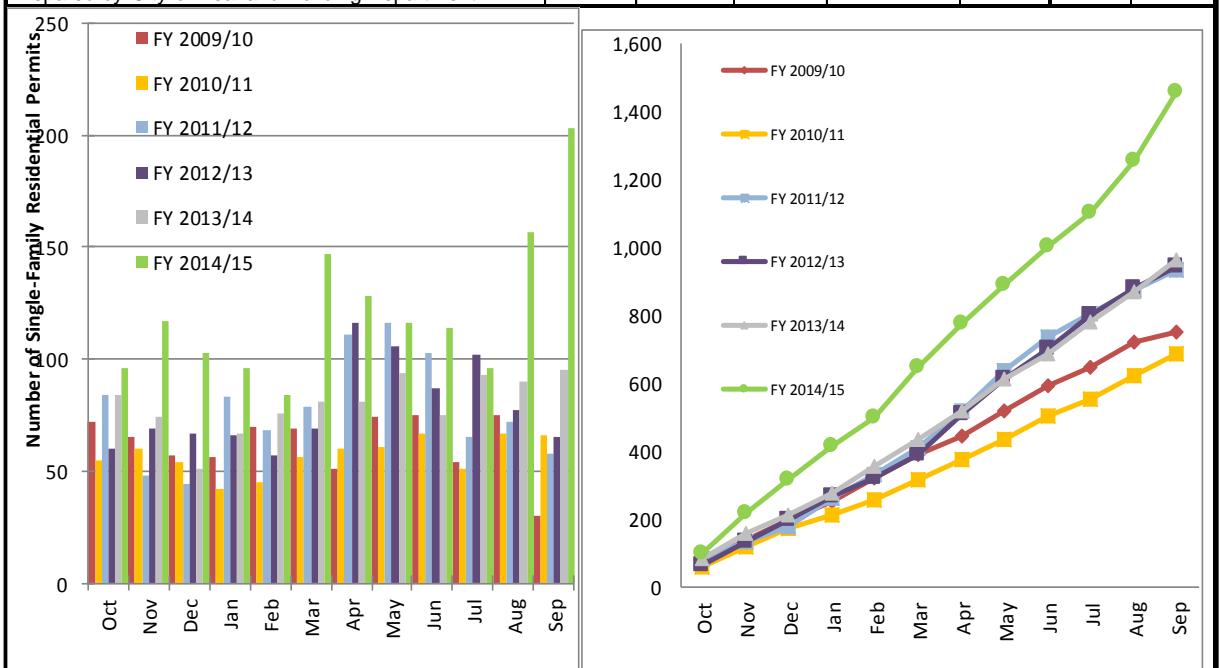
Monthly Processed Permits and Inspections												
PERMITS ISSUED	Jan	Feb	March	April	May	June	July	Aug	Sept	Oct	Nov	Dec
Residential *	369	352	505	510	417	451	457	527	269	0	0	0
Garage Sale	51	96	156	235	214	264	313	184	188	0	0	0
Banner	5	5	18	8	6	8	7	2	6	0	0	0
Plumbing	178	244	220	193	198	207	207	251	244	0	0	0
Electrical	207	212	267	213	217	278	260	298	298	0	0	0
Site Work	0	11	13	2	7	6	0	4	12	0	0	0
Commercial	36	53	42	55	32	62	35	40	47	0	0	0
Mechanical	120	155	199	171	207	210	206	234	213	0	0	0
Swimming Pool	19	24	30	25	21	21	15	26	10	0	0	0
Moving/Placement	8	3	7	3	1	3	3	8	5	0	0	0
Demolition	2	3	3	4	4	2	3	2	1	0	0	0
Tenant Occupancies	14	14	30	18	11	25	12	9	11	0	0	0
Signs	136	22	39	42	60	41	30	26	70	0	0	0
Residential Add/Alterations/Misc	56	47	78	70	75	81	74	83	76	0	0	0
Commercial Additions/Alterations	20	9	11	15	12	6	9	12	16	0	0	0
Commercial Build outs	0	9	7	8	2	8	15	5	9	0	0	0
Irrigation Permits	20	43	58	24	43	56	35	59	48	0	0	0
TOTALS	1,241	1,302	1,683	1,596	1,527	1,729	1,681	1,770	1,523	0	0	0
BUILDING INSPECTIONS	Jan	Feb	March	April	May	June	July	Aug	Sept	Oct	Nov	Dec
Building	806	905	980	998	885	972	1,060	1014	1,229	0	0	0
Electrical	636	501	567	642	556	579	589	510	652	0	0	0
Mechanical	105	144	177	183	205	196	229	192	198	0	0	0
Plumbing	926	944	1,006	971	954	1,112	1,121	983	1,209	0	0	0
Tenant Occupancies	17	18	20	29	24	28	19	12	14	0	0	0
Swimming Pool	45	47	44	57	59	97	87	89	100	0	0	0
Miscellaneous/Others	184	332	294	317	356	371	390	301	383	0	0	0
TOTALS	2,719	2,891	3,088	3,197	3,039	3,355	3,495	3,101	3,785	0	0	0

Single-Family Detached Residential Construction

City of Pearland, Texas

	FY 2009/10		FY 2010/11		FY 2011/12		FY 2012/13		FY 2013/14		FY 2014/15	
	Actual		Actual		Actual		Actual		Actual		Actual	
	Month	YTD	Month	YTD	Month	YTD	Month	YTD	Month	YTD	Month	YTD
Oct	72	72	55	55	84	84	60	60	84	84	96	96
Nov	65	137	60	115	48	132	69	129	74	158	117	213
Dec	57	194	54	169	44	176	67	196	51	209	103	316
Jan	56	250	42	211	83	259	66	262	67	276	96	412
Feb	70	320	45	256	68	327	57	319	76	352	84	496
Mar	69	389	56	312	79	406	69	388	81	433	147	643
Apr	51	440	60	372	111	517	116	504	81	514	128	771
May	74	514	61	433	116	633	106	610	94	608	116	887
Jun	75	589	67	500	103	736	87	697	75	683	114	1,001
Jul	54	643	51	551	65	801	102	799	93	776	96	1,097
Aug	75	718	67	618	72	873	77	876	90	866	157	1,254
Sep	30	748	66	684	58	931	65	941	95	961	203	1,457
Change from Previous Year				-64		247		10		20		496

Prepared by City of Pearland Building Department



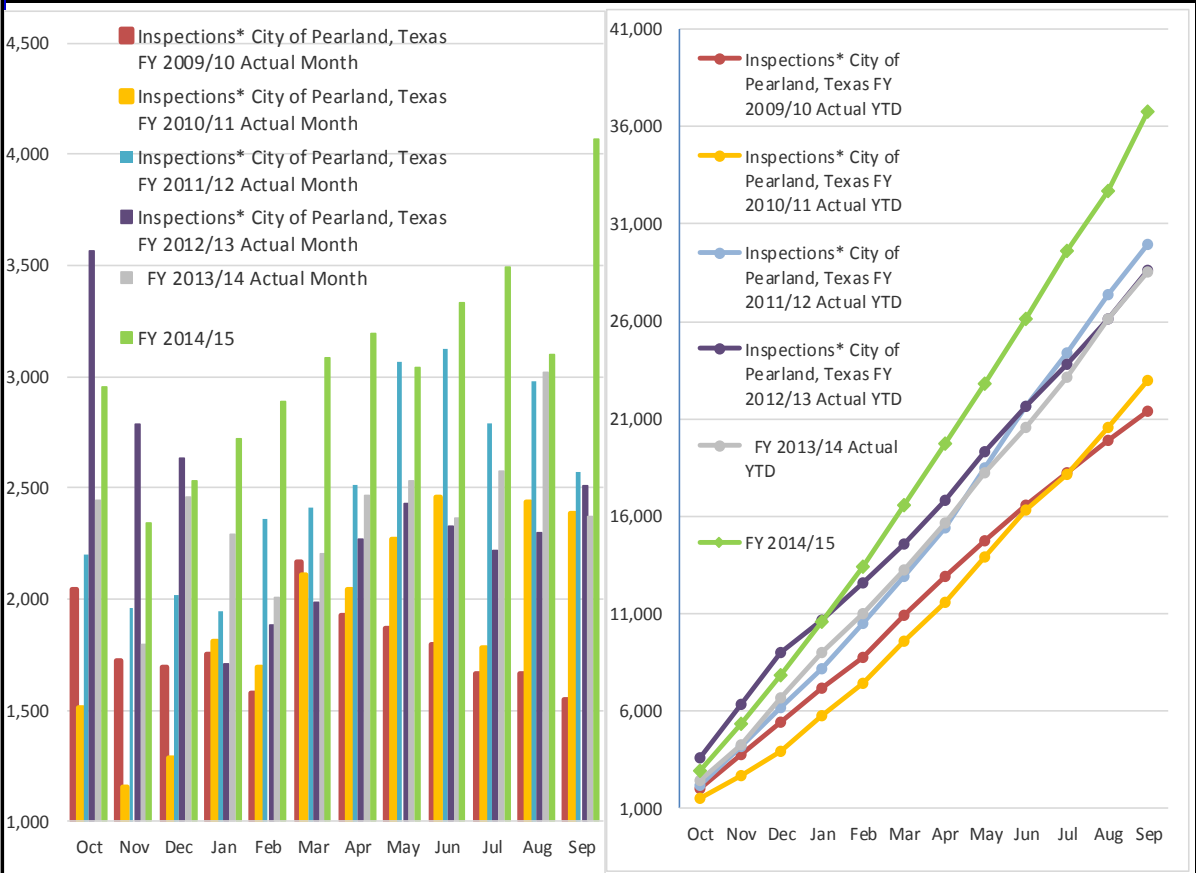
Inspections*

City of Pearland, Texas

	FY 2009/10		FY 2010/11		FY 2011/12		FY 2012/13		FY 2013/14		FY 2014/15	
	Actual		Actual		Actual		Actual		Actual		Actual	
	Month	YTD	Month	YTD	Month	YTD	Month	YTD	Month	YTD	Month	YTD
Oct	2,042	2,042	1,510	1,510	2,202	2,202	3,566	3,566	2,443	2,443	2,957	2,957
Nov	1,720	3,762	1,153	2,663	1,962	4,164	2,788	6,354	1,795	4,238	2,340	5,297
Dec	1,692	5,454	1,287	3,950	2,017	6,181	2,637	8,991	2,460	6,698	2,530	7,827
Jan	1,751	7,205	1,811	5,761	1,947	8,128	1,708	10,699	2,291	8,989	2,719	10,546
Feb	1,581	8,786	1,697	7,458	2,359	10,487	1,882	12,581	2,009	10,998	2,891	13,437
Mar	2,164	10,950	2,110	9,568	2,414	12,901	1,987	14,568	2,204	13,202	3,088	16,525
Apr	1,930	12,880	2,042	11,610	2,511	15,412	2,271	16,839	2,463	15,665	3,197	19,722
May	1,866	14,746	2,271	13,881	3,064	18,476	2,433	19,272	2,534	18,199	3,039	22,761
Jun	1,799	16,545	2,461	16,342	3,124	21,600	2,327	21,599	2,363	20,562	3,335	26,096
Jul	1,664	18,209	1,783	18,125	2,787	24,387	2,222	23,821	2,577	23,139	3,495	29,591
Aug	1,665	19,874	2,437	20,562	2,977	27,364	2,295	26,116	3,021	26,160	3,101	32,692
Sep	1,546	21,420	2,384	22,946	2,575	29,939	2,512	28,628	2,370	28,530	4,068	36,760
Change from Previous Year				1526		6993		-1311		-98		8230

*Inspections include Building, Electrical, Mechanical, Plumbing, Tenant Occupancies, Swimming Pools and Miscellaneous Inspections that include overtime and emergency Inspections.

Prepared by City of Pearland Building Department



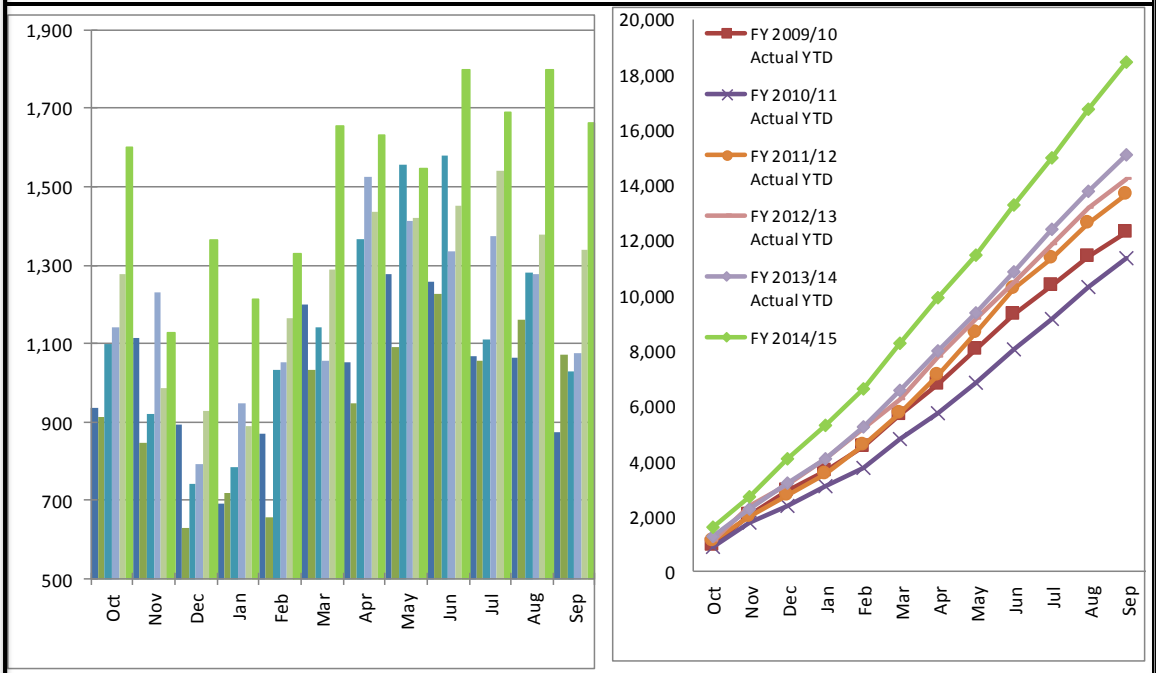
Processed Permits*

City of Pearland, Texas

	FY 2009/10		FY 2010/11		FY 2011/12		FY 2012/13		FY 2013/14		FY 2014/15	
	Actual		Actual		Actual		Actual		Actual		Actual	
	Month	YTD	Month	YTD	Month	YTD	Month	YTD	Month	YTD	Month	YTD
Oct	937	937	911	911	1,100	1,100	1,140	1,140	1,276	1,276	1,599	1,599
Nov	1,113	2,050	849	1,760	919	2,019	1,230	2,370	987	2,263	1,129	2,728
Dec	895	2,945	631	2,391	743	2,762	794	3,164	929	3,192	1,365	4,093
Jan	692	3,637	720	3,111	787	3,549	947	4,111	891	4,083	1,214	5,307
Feb	871	4,508	658	3,769	1,033	4,582	1,051	5,162	1,166	5,249	1,330	6,637
Mar	1,199	5,707	1,033	4,802	1,141	5,723	1,058	6,220	1,290	6,539	1,656	8,293
Apr	1,053	6,760	949	5,751	1,366	7,089	1,526	7,746	1,437	7,976	1,633	9,926
May	1,277	8,037	1,090	6,841	1,557	8,646	1,411	9,157	1,419	9,395	1,548	11,474
Jun	1,256	9,293	1,227	8,068	1,580	10,226	1,336	10,493	1,451	10,846	1,800	13,274
Jul	1,069	10,362	1,056	9,124	1,109	11,335	1,372	11,865	1,539	12,385	1,689	14,963
Aug	1,063	11,425	1,162	10,286	1,282	12,617	1,278	13,143	1,379	13,764	1,798	16,761
Sep	874	12,299	1,071	11,357	1,029	13,646	1,075	14,218	1,338	15,102	1,664	18,425
Change from Previous Year				-942		2289		572		884		3323

*Permits include Residential, Garage Sales, Banner, Plumbing, Electrical, Site Work, Commercial, Mechanical, Swimming Pool, Moving/Placement, Demolition Tenant Occupancies, Signs, Residential Add/Alterations, Commercial Add/Alterations, Commercial Build Outs and Irrigation Permits

Prepared by City of Pearland Building Department



Commercial Permits Description			City of Pearland, Texas				FY'15 - 4th Quarter
This list includes new construction, build outs, additions/alterations greater than \$6,000 valuation since January 2015.							
Date Issued	Business Name		Permit #	Address	Valuation	SQFT	Contractor
9/30/15	Pei Wei Kitchen	Build Out	15-4878	2630 Pearland Pkwy 130	\$400,000	2,749	Van Brunt & Company
9/30/15	Pearland Remington LTD	Addition/Alteration	15-6714	2525 Barry Rose Rd	\$122,940	N/A	Du-West Foundation Repair
9/29/15	Cozy Nail Lounge	Build Out	15-4092	2701 Pearland PKWY 130	\$49,000	1,875	Provest Group INC
9/29/15	Excel Dental	Build Out	15-4612	1816 Pearland PKWY 190	\$255,000	9,459	Home Menders, INC.DBA HM
9/29/15	Crowder Investment	New	15-4992	2422 Broadway St	\$150,000	0	Daleigh LTD, Partnership
9/28/15	Jimmy Changa's	New	15-3864	3515 Business Center Dr	\$1,200,000	10,876	ADB Commercial Construction
9/28/15	Pearland ISD	Build Out	15-3979	3010 Harkey Rd	\$8,500,000	27,000	Purcell Cnstruction INC.
9/28/15	CVS Pharmacy	Addition/Alteration	15-4188	9522 Broadway St	\$125,000	15,411	Project Builders
9/28/15	Diayspa	Build Out	15-4237	9223 Broadway St 109	\$1,004,640	30,645	Anchor Commercial
9/24/15	South TX Foot Specialist	New	15-3545	3411 Broadway St	\$575,000	2,557	HM General Contractor
9/24/15	Panda Restaurant	New	15-4810	15758 South Freeway	\$650,000	2,593	Triad Retail Construction
9/23/15	CVS Pharmacy	New	15-3761	15027 State HWY 6	\$1,200,000	14,600	Project Builders
9/22/15	Advanced Dermatology	Build Out	15-4988	2950 Cullen PKWY 102	\$135,000	0	JH Premier Construction
9/18/15	Packaging Services	New	15-5825	1904 Mykawa Rd	\$150,000	N/A	Norman Homes INC
9/17/15	Tiger Mart	Build Out	15-4742	1524 Broadway St	\$10,000	N/A	Coastal Tank and Testing
9/17/15	Pena's Donut	Addition/Alteration	15-4989	11601 Shadow Creek PKWY 103	\$45,000	N/A	Patterson Construction
9/16/15	S.F. Nail Salon	Build Out	15-0801	2975 Kingsley Dr # 125	\$48,000	1,450	NSS Reliable Construction, INC
9/16/15	Premier Grocers	Build Out	15-4683	12155 Shadow Creek PKWY 116	\$9,000	840	Trimcos LLC
9/8/15	T-Mobile	Tower	15-3748	3310 Broadway St	\$8,500	N/A	Lonestar Electrical Contractor
9/3/15	Gayatr Corp	Addition/Alteration	15-6120	2806 Miller Ranch Rd	\$15,000	N/A	Seafast Construction, INC
8/27/15	Alba Tainch	Addition/Alteration	15-3845	4453 Main St	\$10,000	N/A	Molina Brothers
8/26/15	Ronnie Killen	Addition/Alteration	15-5876	6425 Broadway St	\$25,000	N/A	Ronnie Killen
8/26/15	AR Ventures LLC	Build Out	15-1075	2527 Broadway St	\$338,000	4,510	Seafast Construction, INC
8/19/15	Ronnie Killen	Addition/Alteration	15-5724	6425 Broadway St	\$25,000	N/A	Ronnie Killen
8/14/15	Kingsley Crossing	New	15-2214	12810 Broadway St	\$1,015,099	14,247	Legacy Construction LLC
8/13/15	Panera Bread	New	15-3611	2670 Pearland PKWY	\$400,000	4,480	Regas Contracting
8/12/15	Retail Oak Forest, LLC	Build Out	15-3496	5730 Broadway St 120	\$150,000	22,087	Innovative Building Concepts
8/7/15	JH&SP Realty LLC	Addition/Alteration	15-2350	2003 Mykawa Rd	\$41,244	N/A	JB Zamora Builders
8/6/15	Mary Amick	New	15-3675	1705 Broadway St	\$75,000	2,400	Gorilla Steal & Building Prod
8/6/15	Dollar Store	Build Out	15-3579	8201 Broadway St 131	\$30,000	60,164	Versailles Design
8/5/15	Costco	Build Out	15-4908	3500 Business Center Dr	\$264,200	156,147	RMC Constructors
8/3/15	City of Pearland	New	15-4635	1818 Reflection Bay	\$10,700,000	N/A	CDM Constructors INC
8/3/15	Walgreens	Build Out	15-2022	8430 Broadway St	\$45,000	115	Fulcrum Construction
7/31/15	Children's Learning Adventure	Addition/Alteration	15-4286	10001 Broadway St	\$400,000	N/A	ADB Commercial Construction
7/31/15	Melissa M. Wilson & Finance	Build Out	15-2588	12004 Shadow Creek PKWY 116	\$30,000	3,000	Interior Constructions, LLC
7/31/15	Emma's Grill	Build Out	15-3767	5096 Broadway St.	\$201,700	6,845	A-Better Plumbing
7/29/15	Smoothie King	Build Out	15-4756	2800 Broadway St. #P	\$90,000	1,750	G-Lugrand Dawkins Enterprise
7/24/15	Dr. Susman Chi Dental Office	Build Out	15-3399	11200 Broadway St. #2703	\$104,000	1,100	Custom Practices LLC
7/23/15	Verizon Tower	Generators	15-4688	8511 Industrial Dr. #MP	\$160,000	500	SBC Communications Corp.
7/22/15	Paint with a Twist	Build Out	15-3525	9223 Broadway St. #101	\$107,000	2,472	Boss Builders
7/20/15	Element Massage	Build Out	15-3131	10223 Broadway St. #C	\$145,000	1,100	National Retail & Commercial
7/20/15	HCFD	Build Out	15-3921	10970 SCP #130	\$22,410	48,000	All TM Construction
7/16/15	Crosspoint Church	Addition/Alteration	15-3161	1134 Old Alvin Rd	\$128,300	N/A	Burts Construction, INC
7/16/15	Grazia Italian Kitchen	Build Out	15-4285	9415 Broadway St. #105	\$41,800	1,080	Shepard Contracting, LLC
7/14/15	Gartner Interest	Addition/Alteration	15-1265	1231 Broadway St	\$6,000	N/A	DSL General Contractors, Inc
7/14/15	Yoga Studio	Addition/Alteration	15-3410	2810 Business Center Dr 102	\$40,000	N/A	Kaci Builders
7/14/15	Newquest Properties	Build Out	15-2352	2701 Pearland Pkwy #120	\$175,000	1,725	HM General Contractor
7/13/15	Invest. of Sunrise Lake	Build Out	15-4066	9307 Broadway St. #407	\$137,000	6,269	Boss Builders
7/10/15	Moe's SW Grill	Build Out	15-2603	15718 South Frwy #170	\$170,000	2,000	SAT Construction
7/9/15	Sunrise Lake Center	Addition/Alteration	15-3660	9223 Broadway St	\$18,000	N/A	Boss Builders
7/8/15	HCFD	Addition/Alteration	15-3917	10970 Shadow Creek PKWY 250	\$49,775	N/A	All TM Construction
7/8/15	AT & T	Build Out	15-2012	2701 Pearland Pkwy #100	\$100,000	2,163	Sage Commercial Group, LLC
7/8/15	H & M Hennes & Mauti	Build Out	15-2872	11200 Broadway St. #1150	\$1,600,000	19,543	Triad Retail Construction
7/1/15	Wing-stop	Build Out	15-3100	2701 Pearland Pkwy #170	\$90,000	1,860	Thao Le Premier

Total Construction Valuation as Reported by Applicant on Building Permit						
City of Pearland, Texas						
VALUATION						
	Commercial	Single-family	Multi-Family Residential	Misc. **	Total Valuation	6 Month Totals
Oct 12	\$ 1,258,970.00	\$ 12,015,483.00	\$ -	\$ 17,538,670.00	\$ 30,813,123.00	
Nov 12	\$ 1,034,878.00	\$ 15,033,236.00	\$ -	\$ 19,533,169.00	\$ 35,601,283.00	
Dec 12	\$ 314,500.00	\$ 13,756,401.00	\$ -	\$ 17,721,708.00	\$ 31,792,609.00	
Jan 13	\$ 3,659,590.00	\$ 14,318,957.00	\$ -	\$ 11,209,792.00	\$ 29,188,339.00	
Feb 13	\$ 1,831,998.00	\$ 13,330,021.00	\$ -	\$ 34,937,517.00	\$ 50,099,536.00	
Mar 13	\$ 2,360,500.00	\$ 15,152,469.00	\$ -	\$ 16,980,117.00	\$ 34,493,086.00	\$269,608,378
Apr 13	\$ 1,756,974.00	\$ 26,407,384.00	\$ -	\$ 20,032,842.00	\$ 48,197,200.00	
May 13	\$ 842,222.00	\$ 24,528,410.00	\$ -	\$ 33,102,392.00	\$ 58,473,024.00	
Jun 13	\$ 2,132,018.00	\$ 19,772,615.00	\$ -	\$ 27,252,560.00	\$ 49,157,193.00	
Jul 13	\$ 7,749,508.00	\$ 21,887,773.00	\$ -	\$ 19,564,745.00	\$ 49,202,026.00	
Aug 13	\$ 8,776,700.00	\$ 16,453,574.00	\$ -	\$ 23,958,578.00	\$ 49,188,852.00	
Sep 13	\$ 1,511,990.00	\$ 14,827,644.00	\$ -	\$ 60,033,749.00	\$ 76,373,383.00	\$379,822,739
Oct 13	\$ 41,401,250.00	\$ 19,773,405.00	\$ -	\$ 32,103,244.00	\$ 93,277,899.00	
Nov 13	\$ 665,800.00	\$ 16,110,548.00	\$ -	\$ 34,756,953.00	\$ 51,533,301.00	
Dec 13	\$ 1,743,900.00	\$ 12,078,629.00	\$ -	\$ 46,424,749.00	\$ 60,247,278.00	
Jan 14	\$ 8,129,139.00	\$ 17,055,625.00	\$ -	\$ 1,625,317.00	\$ 26,810,081.00	
Feb-15	\$ 3,225,150.00	\$ 18,221,081.00	\$ -	\$ 3,495,412.00	\$ 24,941,643.00	
Mar 14	\$ 16,921,488.00	\$ 17,957,907.00	\$ 21,458,081.00	\$ 13,682,253.00	\$ 70,019,729.00	\$371,258,408
Apr 14	\$ 11,279,070.00	\$ 18,290,635.00	\$ -	\$ 70,018,329.00	\$ 99,588,034.00	
May 14	\$ 25,885,608.00	\$ 21,048,988.00	\$ -	\$ 20,832,735.00	\$ 67,767,331.00	
Jun 14	\$ 7,250,669.00	\$ 16,845,180.00	\$ -	\$ 58,035,741.00	\$ 82,131,590.00	
Jul 14	\$ 11,539,782.00	\$ 22,199,141.00	\$ -	\$ 67,800,859.00	\$ 101,539,782.00	
Aug-14	\$ 1,949,433.00	\$ 21,172,017.00	\$ 37,806,108.00	\$ 25,094,936.00	\$ 86,022,494.00	
Sep 14	\$ 4,160,064.00	\$ 21,403,832.00	\$ -	\$ 76,538,656.00	\$ 102,102,552.00	\$419,702,151
Oct-14	\$ 2,897,100.00	\$ 21,561,503.00	\$ -	\$ 20,531,490.00	\$ 44,990,093.00	
Nov-14	\$ 1,343,100.00	\$ 27,217,946.00	\$ -	\$ 19,624,267.00	\$ 48,185,313.00	
Dec-14	\$ 7,736,890.00	\$ 22,645,509.00	\$ -	\$ 6,479,518.00	\$ 36,861,917.00	
Jan-15	\$ 13,738,942.00	\$ 22,394,964.00	\$ 2,000,000.00	\$ 27,858,487.00	\$ 65,992,393.00	
Feb-15	\$ 5,506,605.00	\$ 19,303,034.00	\$ -	\$ 30,162,859.00	\$ 54,972,498.00	
Mar-15	\$ 11,840,905.00	\$ 34,076,126.00	\$ -	\$ 32,105,365.00	\$ 78,022,396.00	\$484,238,684
Apr-15	\$ 2,537,250.00	\$ 27,901,551.00	\$ -	\$ 41,024,780.00	\$ 71,463,581.00	
May-15	\$ 1,552,442.00	\$ 26,985,572.00	\$ -	\$ 76,251,566.00	\$ 104,789,580.00	
Jun-15	\$ 20,890,465.00	\$ 25,940,828.00	\$ 17,162,000.00	\$ 45,004,943.00	\$ 108,998,236.00	
Jul-15	\$ 3,824,460.00	\$ 22,627,215.00	\$ -	\$ 32,527,613.00	\$ 58,979,288.00	
Aug-15	\$ 13,121,559.00	\$ 33,514,477.00	\$ -	\$ 23,998,485.00	\$ 70,634,521.00	
Sep-15	\$ 14,657,660.00	\$ 44,189,574.00	\$ -	\$ 5,466,277.00	\$ 64,313,511.00	\$193,927,320

** Miscellaneous include Fire, Mechanical, Moving, Swimming Pools, Signs, Sitework and Tenant Occupancies

