

PRELIMINARY - NOT FOR CONSTRUCTION

PRELIMINARY - NOT FOR CONSTRUCTION

FED. ROAD DIST. NO.	STATE	PROJECT NO.	SHEET NO.
6	TEXAS	CO 912-31-196	1
DIST. NO.	COUNTY	CONTROL NO.	ROUTE NO.
HOUSTON	BRAZORIA	0912-31-196	CR 403

ADT: 4,900 (2009)
7,332 (2029)

DESIGN SPEED: 45 MPH

FC= URBAN MINOR ARTERIAL

STATE OF TEXAS
DEPARTMENT OF TRANSPORTATION
PLANS OF PROPOSED
ROADWAY IMPROVEMENT

BRAZORIA COUNTY
PROJECT NO. CC 912-31-196
CSJ NO. 0912-31-196
COUNTY ROAD 403 (HUGHES RANCH RD)
LIMITS: FROM CR 94 TO FM 865

FOR THE CONSTRUCTION OF WIDENING TO A 4 LANE DIVIDED NON-FREEWAY FACILITY CONSISTING OF GRADING, BASE, CONCRETE PAVEMENT, TRAFFIC SIGNALS, SIGNING, MARKINGS, AND DRAINAGE FACILITIES

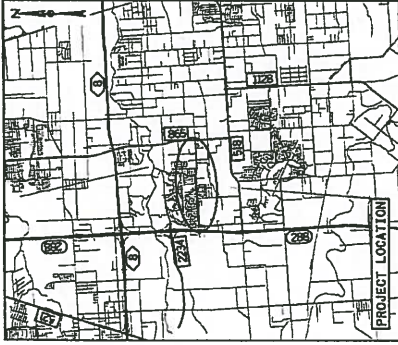
ROADWAY LENGTH = 10,751.66 FT = 2.036 MI
BRIDGE LENGTH = 0.00 FT = 0.000 MI
NET LENGTH OF PROJECT = 10,751.66 FT = 2.036 MI

INDEX OF SHEETS
SEE SHEET 2

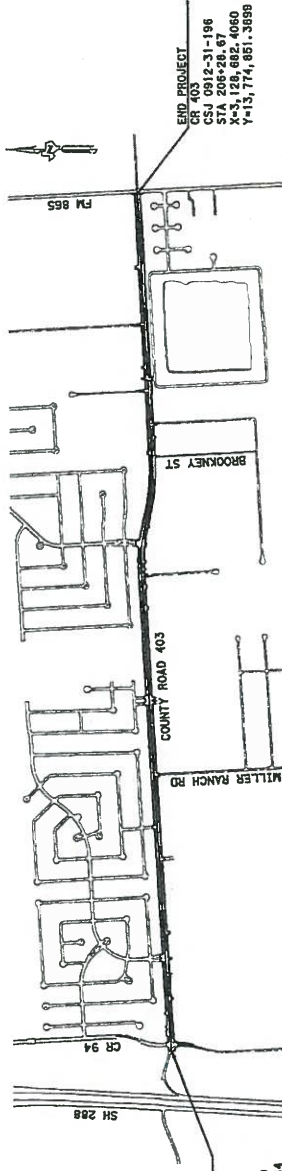
FINAL PLANS
DATE CONTRACTOR BEGAN WORK _____
DATE WORK WAS COMPLETED _____
DATE WORK WAS ACCEPTED _____
CONTRACTOR NAME _____

REGISTERED ACCESSIBILITY SPECIALIST (RAS)
INSPECTION REQUIRED TDLR NO. EABPRJ _____

SPECIFICATIONS ADOPTED BY THE TEXAS DEPARTMENT OF TRANSPORTATION, JUNE 1, 2004 AND SPECIFICATION ITEMS LISTED AND DATED AS FOLLOWS, SHALL GOVERN ON THIS PROJECT: REQUIRED CONTRACT PROVISIONS FOR ALL FEDERAL-AID CONSTRUCTION CONTRACTS (FORM FHWA 1273, MAY, 2012)



Proximity Map
1"=15,000'



BEGIN PROJECT
CSJ 0912-31-196
STA 98+77.01
X=3,117,866.8770
Y=13,774,489.9034

END PROJECT
CR 403
CSJ 0912-31-196
STA 128+68.4060
X=3,117,774.8513899
Y=13,774,851.3899

NOTES:

- ALL BEARINGS AND COORDINATES SHOWN HEREON ARE BASED ON THE TEXAS COORDINATES SYSTEM, SOUTH CENTRAL ZONE, NORTH AMERICAN DATUM OF 1983, 1983 ADJUSTMENT.
- ALL COORDINATES AND DISTANCES SHOWN HEREON ARE SURFACE AND MAY BE CONVERTED TO GRID BY DIVIDING BY A COMBINED ADJUSTMENT FACTOR OF 1.000126716.
- ALL ELEVATIONS SHOWN HEREON ARE REFERENCED TO THE NORTH AMERICAN VERTICAL DATUM OF 29-NOV-1987 ADJUSTMENT.

POINT	NORTHING	EASTING	ELEV	DESCRIPTION
TBM 1	13,774,533.00	3,118,066.82	55.83	CHISEL BOX SET IN S.E.T. OF 36" RCP
TBM 2	13,774,543.06	3,127,519.75	56.45	CHISEL BOX SET IN SIDEWALK
TBM 3	13,774,571.08	3,123,820.52	56.66	CHISEL BOX SET IN SIDEWALK
TBM 4	13,774,590.79	3,125,789.08	54.49	CHISEL BOX SET IN TOP OF 24" RCP
TBM 5	13,774,766.56	3,127,044.98	55.20	RAILROAD SPIRE SET IN POWER POLE
TBM 6	13,774,878.85	3,128,154.75	55.01	RAILROAD SPIRE SET IN POWER POLE

PROJECT LAYOUT
1"=1,500'
EXCEPTIONS: NONE
RAILROAD CROSSINGS: NONE

PRELIMINARY - NOT FOR CONSTRUCTION

© 2013 by Texas Department of Transportation
All Rights Reserved

BRAZORIA COUNTY

APPROVED _____ DATE _____

CITY ENGINEER

CITY OF PEARLAND

APPROVED _____ DATE _____

CITY ENGINEER

TEXAS DEPARTMENT OF TRANSPORTATION

SUBMITTED FOR LETTING _____

APPROVED FOR LETTING _____

PROJECT MANAGER _____

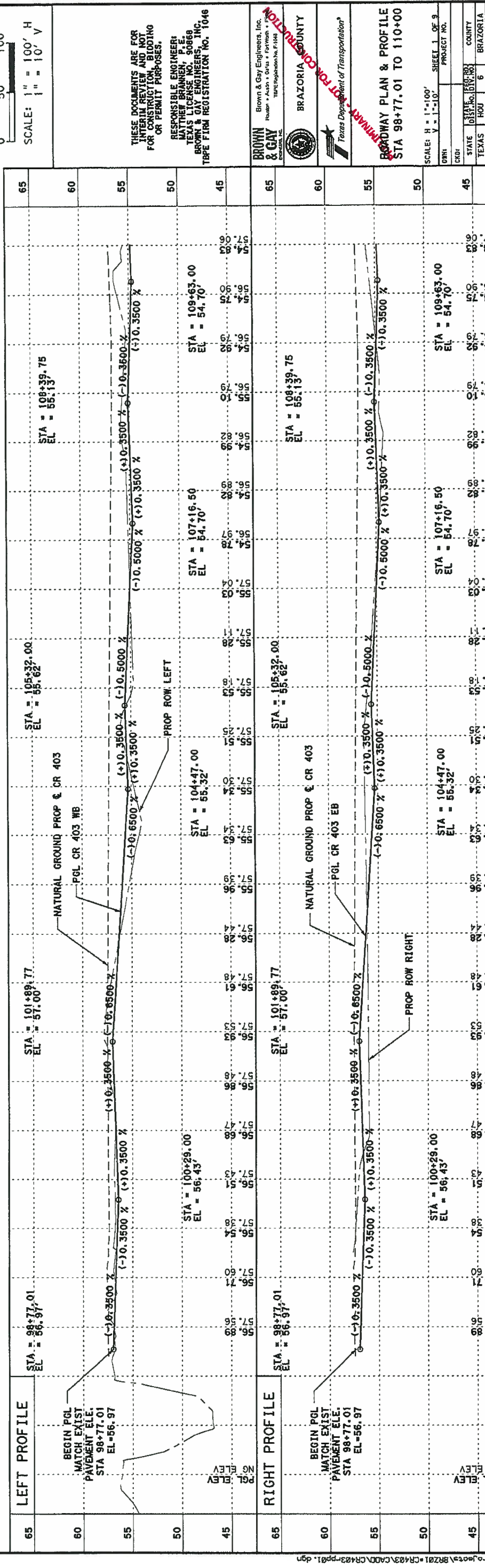
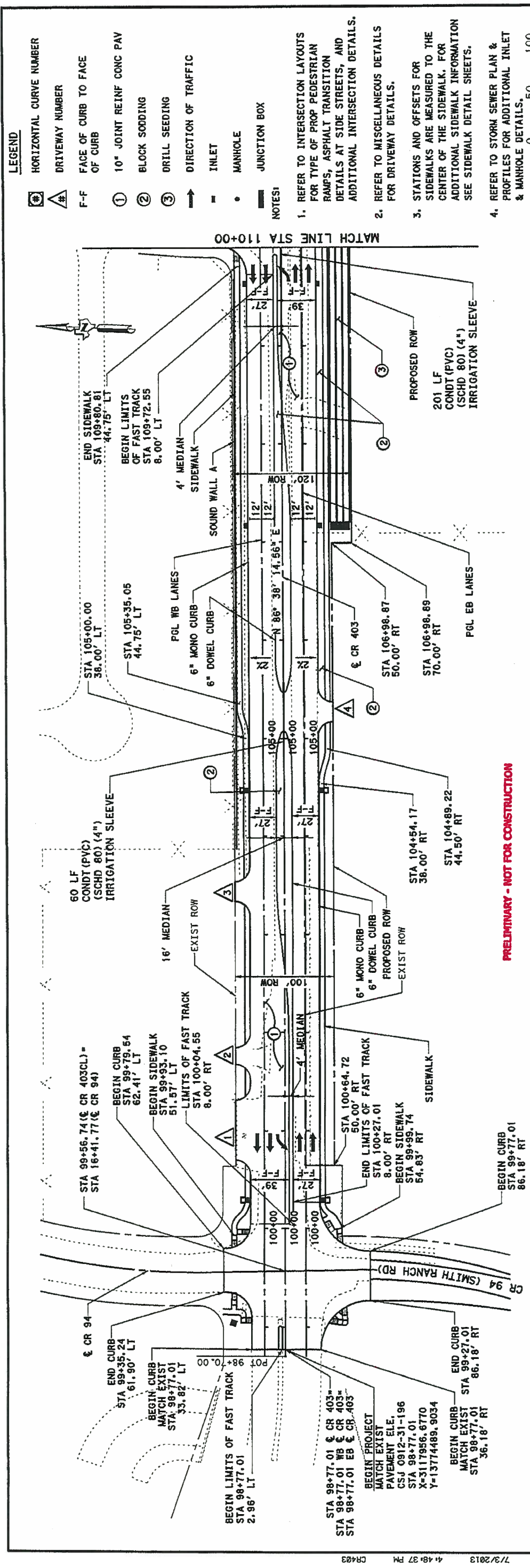
RECOMMENDED FOR LETTING _____

DIRECTOR, TRAFFIC OPERATIONS DIVISION _____

DISTRICT ENGINEER _____

DIRECTOR, DESIGN DIVISION _____

COUNTY BRAZORIA
PROJ. NO. CC 912-31-196
LETTING DATE _____
DATE ACCEPTED _____



- LEGEND**
- # HORIZONTAL CURVE NUMBER
 - # DRIVEWAY NUMBER
 - F-F FACE OF CURB TO FACE OF CURB
 - ① 10" JOINT REINF CONC PAV
 - ② BLOCK SODDING
 - ③ DRILL SEEDING
 - DIRECTION OF TRAFFIC
 - INLET
 - MANHOLE
 - ▬ JUNCTION BOX

NOTES:

- REFER TO INTERSECTION LAYOUTS FOR TYPE OF PROP PEDESTRIAN RAMPS, ASPHALT TRANSITION DETAILS AT SIDE STREETS, AND ADDITIONAL INTERSECTION DETAILS.
- REFER TO MISCELLANEOUS DETAILS FOR DRIVEWAY DETAILS.
- STATIONS AND OFFSETS FOR SIDEWALKS ARE MEASURED TO THE CENTER OF THE SIDEWALK. FOR ADDITIONAL SIDEWALK INFORMATION SEE SIDEWALK DETAIL SHEETS.
- REFER TO STORM SEWER PLAN & PROFILES FOR ADDITIONAL INLET & MANHOLE DETAILS.

SCALE: 1" = 100' H
1" = 10' V

THESE DOCUMENTS ARE FOR INTERIM REVIEW AND NOT FOR CONSTRUCTION, BIDDING OR PERMIT PURPOSES.

RESPONSIBLE ENGINEER:
MATTHEW BRANNEN, P.E.
TEXAS CIVIL ENGINEERS, INC.
TYPE FIRM REGISTRATION NO. 1046

BROWN & GAY
BRAZORIA COUNTY
Texas Department of Transportation

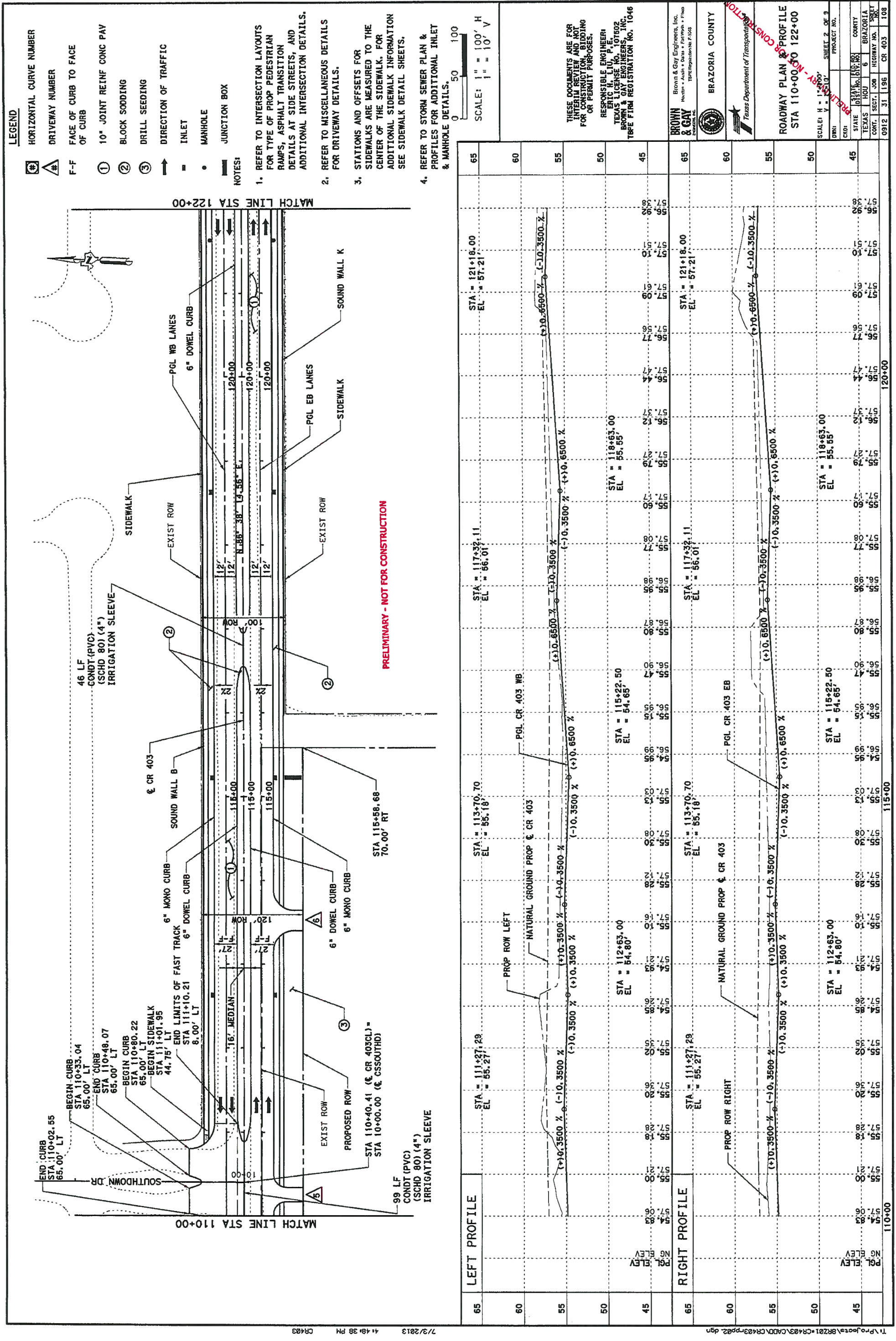
ROADWAY PLAN & PROFILE
STA 98+77.01 TO 110+00

SCALE: H = 1" = 100'
V = 1" = 10'

PROJECT NO. 0912 31 196 CR 403 107

COUNTY BRAZORIA
HIGHWAY NO. 6
SHEET 107

PRELIMINARY - NOT FOR CONSTRUCTION



- LEGEND**
- ⊗ HORIZONTAL CURVE NUMBER
 - ⊠ DRIVEWAY NUMBER
 - F-F FACE OF CURB TO FACE OF CURB
 - ① 10" JOINT REINF CONC PAV
 - ② BLOCK SOODING
 - ③ DRILL SEEDING
 - ↑ DIRECTION OF TRAFFIC
 - INLET
 - MANHOLE
 - ▭ JUNCTION BOX

NOTES:

- REFER TO INTERSECTION LAYOUTS FOR TYPE OF PROP PEDESTRIAN RAMPS, ASPHALT TRANSITION DETAILS AT SIDE STREETS, AND ADDITIONAL INTERSECTION DETAILS.
- REFER TO MISCELLANEOUS DETAILS FOR DRIVEWAY DETAILS.
- STATIONS AND OFFSETS FOR SIDEWALKS ARE MEASURED TO THE CENTER OF THE SIDEWALK. FOR ADDITIONAL SIDEWALK INFORMATION SEE SIDEWALK DETAIL SHEETS.
- REFER TO STORM SEWER PLAN & PROFILES FOR ADDITIONAL INLET & MANHOLE DETAILS.

SCALE: 1" = 100' H
1" = 10' V

THESE DOCUMENTS ARE FOR INFORMATION AND NOT FOR CONSTRUCTION BIDDING OR PERMIT PURPOSES.

RESPONSIBLE ENGINEER
ERIC H. LIU, P.E.
TEXAS LICENSE NO. 107602
BROWN & GAY ENGINEERS, INC.
TYPE FIRM REGISTRATION NO. 1046

BROWN & GAY ENGINEERS, INC.
10000 Katy Freeway, Suite 1000, Houston, Texas 77058
PH: 281.460.1000
FAX: 281.460.1001
www.brownandgay.com

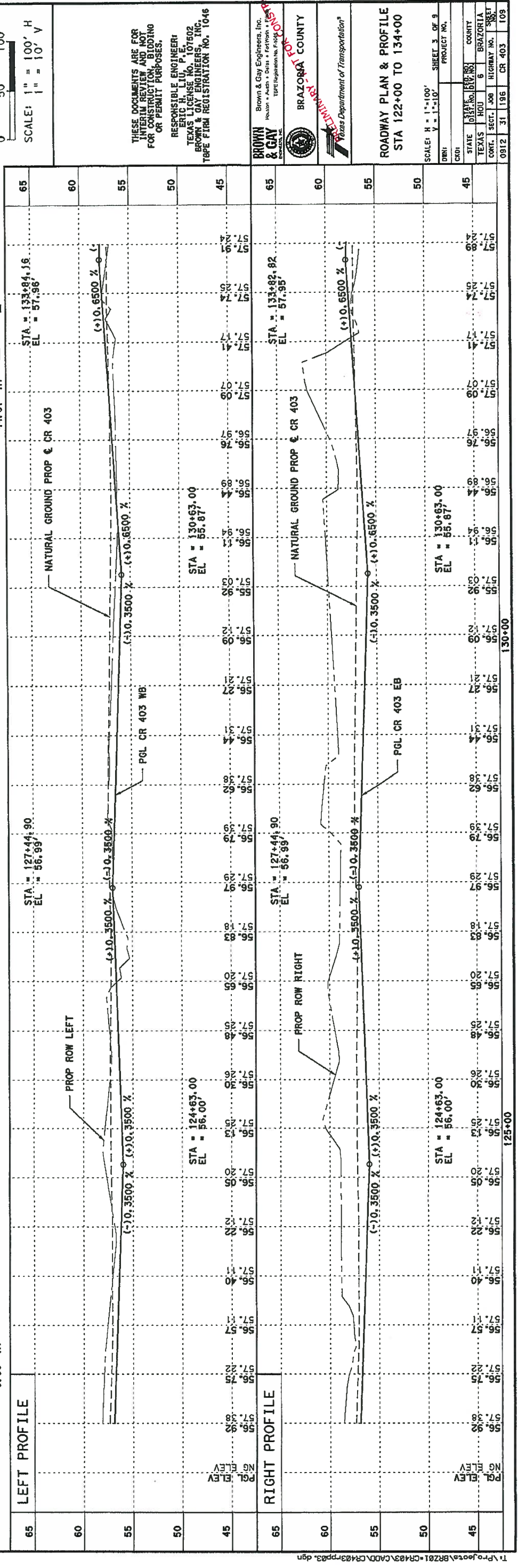
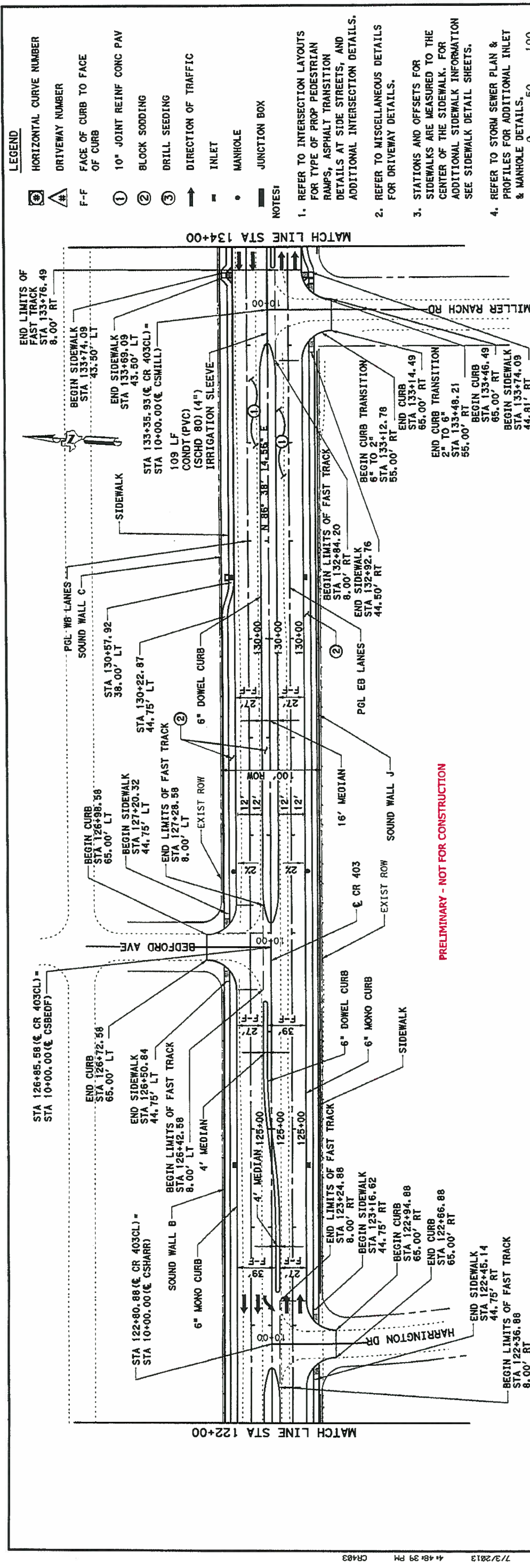
BRAZORIA COUNTY
Texas Department of Transportation

ROADWAY PLAN & PROFILE
STA 110+00 TO 122+00

SCALE: H = 1" = 100'
V = 1" = 10'

SHEET 2 OF 9
PROJECT NO. 0912 3T 196 CR 403 108

STATION	LEFT PROFILE	RIGHT PROFILE
65	STA = 121+18.00 EL = 57.21	STA = 121+18.00 EL = 57.21
60	STA = 117+32.11 EL = 56.01	STA = 117+32.11 EL = 56.01
55	STA = 115+22.50 EL = 54.65	STA = 115+22.50 EL = 54.65
50	STA = 113+70.70 EL = 55.18	STA = 113+70.70 EL = 55.18
45	STA = 112+63.00 EL = 54.80	STA = 112+63.00 EL = 54.80
65	STA = 111+27.29 EL = 55.27	STA = 111+27.29 EL = 55.27
60	STA = 110+40.41 (CR 403CL) = STA 10+00.00 (CR 403SOUTH)	STA = 110+40.41 (CR 403CL) = STA 10+00.00 (CR 403SOUTH)
55	STA = 110+02.55 EL = 65.00	STA = 110+02.55 EL = 65.00
50	STA = 110+02.55 EL = 65.00	STA = 110+02.55 EL = 65.00
45	STA = 110+02.55 EL = 65.00	STA = 110+02.55 EL = 65.00



LEGEND
 HORIZONTAL CURVE NUMBER
 DRIVEWAY NUMBER
 FACE OF CURB TO FACE OF CURB
 10" JOINT REINF CONC PAV
 BLOCK SODDING
 DRILL SEEDING
 DIRECTION OF TRAFFIC
 INLET
 MANHOLE
 JUNCTION BOX

NOTES
 1. REFER TO INTERSECTION LAYOUTS FOR TYPE OF PROP PEDESTRIAN RAMPS, ASPHALT TRANSITION DETAILS AT SIDE STREETS, AND ADDITIONAL INTERSECTION DETAILS.
 2. REFER TO MISCELLANEOUS DETAILS FOR DRIVEWAY DETAILS.
 3. STATIONS AND OFFSETS FOR SIDEWALKS ARE MEASURED TO THE CENTER OF THE SIDEWALK. FOR ADDITIONAL SIDEWALK INFORMATION SEE SIDEWALK DETAIL SHEETS.
 4. REFER TO STORM SEWER PLAN & PROFILES FOR ADDITIONAL INLET & MANHOLE DETAILS.

SCALE: 1" = 100' H
 1" = 10' V

THESE DOCUMENTS ARE FOR INTERIM REVIEW AND NOT FOR CONSTRUCTION, BIDDING OR PERMIT PURPOSES.
 RESPONSIBLE ENGINEER
 ERIC H. LUTZ, P.E.
 TEXAS LICENSE NO. 07500
 BROWN & GAY ENGINEERS, INC.
 TYPE FIRM REGISTRATION NO. 1046

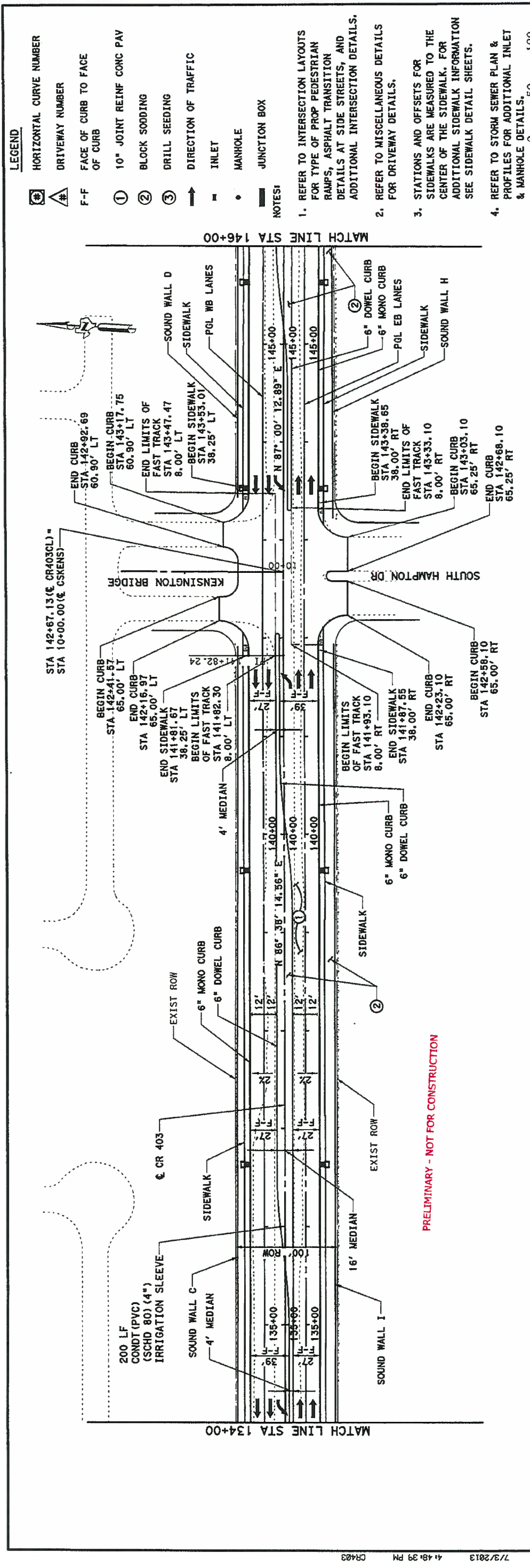
BROWN & GAY
 BRAZORIA COUNTY
 Texas Department of Transportation

ROADWAY PLAN & PROFILE
 STA 122+00 TO 134+00

SCALE: H = 1"=100'
 V = 1"=10'

DRW: SHEET 3 OF 9
 PROJECT NO.

STATE: TEXAS COUNTY: BRAZORIA
 DISTRICT: HOUSTON
 CONTRACT: 0912 SECT. 008 HIGHWAY NO. 109
 SHEET NO. 31 OF 403



STATION	LEFT PROFILE	RIGHT PROFILE
65	STA = 138+34.66 EL = 57.59'	STA = 141+84.50 EL = 57.84'
60	STA = 139+63.00 EL = 57.14'	STA = 144+65.64 EL = 57.14'
55	STA = 136+63.00 EL = 56.98'	STA = 145+63.00 EL = 56.80'
50	STA = 139+63.00 EL = 57.14'	STA = 144+65.64 EL = 57.14'
45	STA = 138+34.66 EL = 57.59'	STA = 141+84.50 EL = 57.84'

LEGEND

- ⊗ HORIZONTAL CURVE NUMBER
- ⊠ DRIVEWAY NUMBER
- F-F FACE OF CURB TO FACE OF CURB
- ① 10" JOINT REINF CONC PAV
- ② BLOCK SOODING
- ③ DRILL SEEDING
- DIRECTION OF TRAFFIC
- INLET
- MANHOLE
- ▬ JUNCTION BOX

NOTES

- REFER TO INTERSECTION LAYOUTS FOR TYPE OF PROP PEDESTRIAN RAMPS, ASPHALT TRANSITION DETAILS AT SIDE STREETS, AND ADDITIONAL INTERSECTION DETAILS.
- REFER TO MISCELLANEOUS DETAILS FOR DRIVEWAY DETAILS.
- STATIONS AND OFFSETS FOR SIDEWALKS ARE MEASURED TO THE CENTER OF THE SIDEWALK. FOR ADDITIONAL SIDEWALK INFORMATION SEE SIDEWALK DETAIL SHEETS.
- REFER TO STORM SEWER PLAN & PROFILES FOR ADDITIONAL INLET & MANHOLE DETAILS.

SCALE: 1" = 100' H
1" = 10' V

THESE DOCUMENTS ARE FOR INTERIM REVIEW AND NOT FOR CONSTRUCTION, BIDDING OR PERMIT PURPOSES.

RESPONSIBLE ENGINEER
ERIC H. LUI, P.E.
TEXAS LICENSE NO. 107502
BROWN & GAY ENGINEERS, INC.
TYPE FIRM REGISTRATION NO. 1046

BROWN & GAY
Houston • Austin • Dallas • Fort Worth • San Antonio

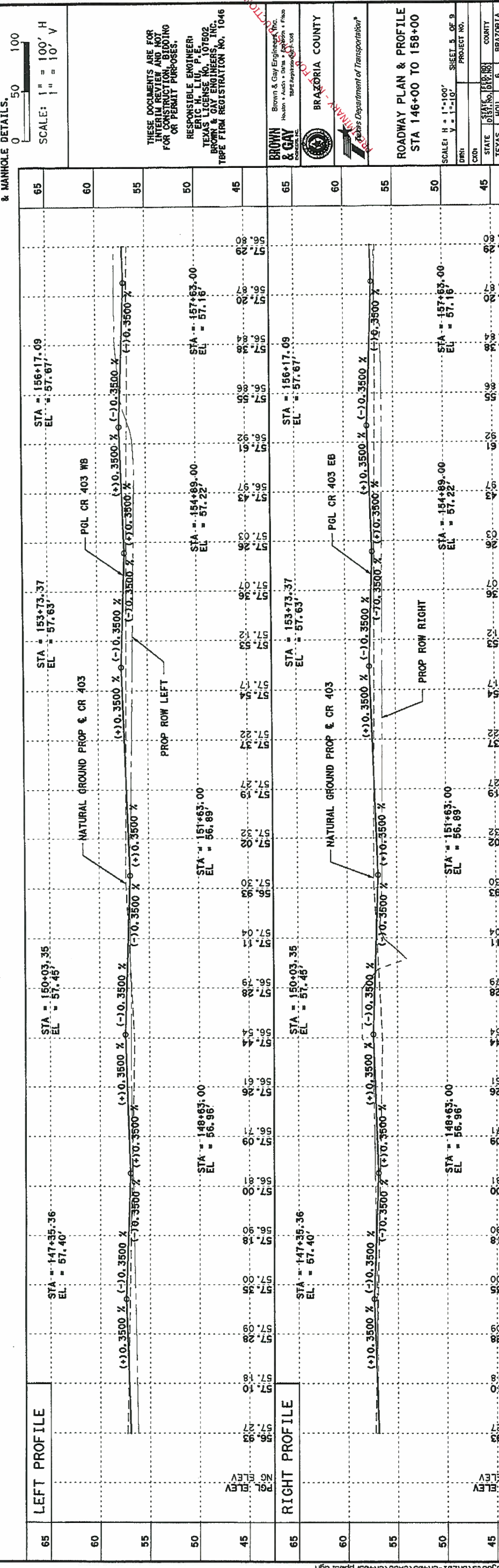
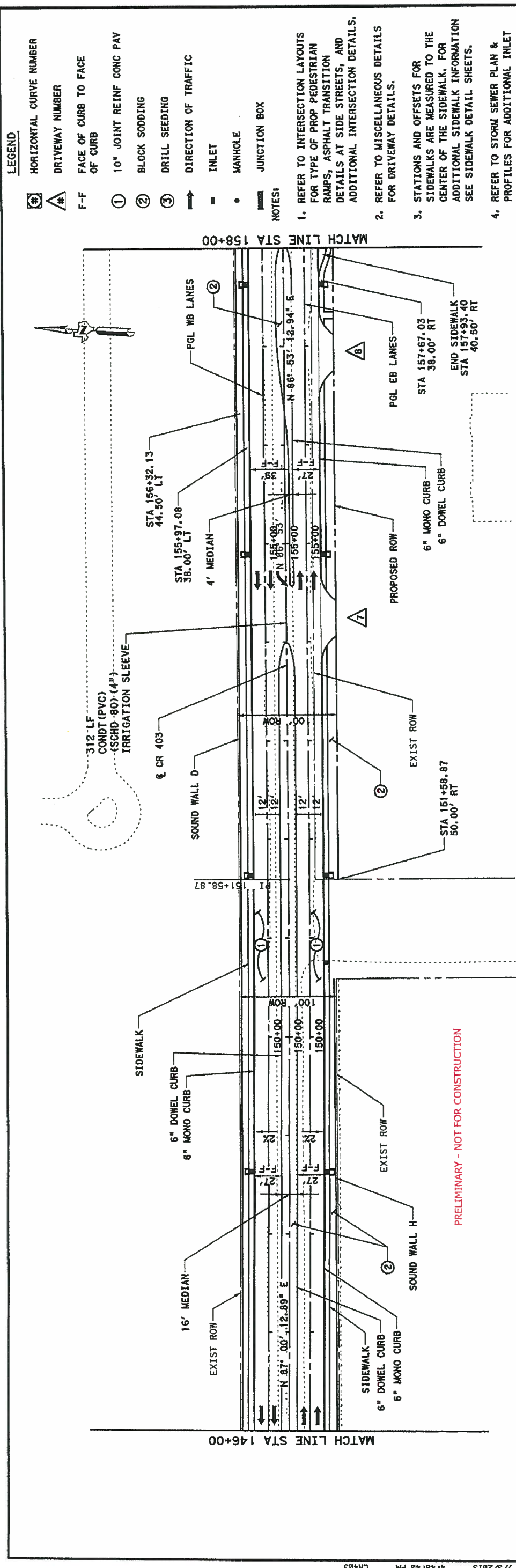
BRAZORIA COUNTY
Texas Department of Transportation

ROADWAY PLAN & PROFILE
STA 134+00 TO 146+00

SCALE: H = 1"=100'
V = 1"=10'

SHEET 4 OF 9
PROJECT NO.

STATE: TEXAS COUNTY: BRAZORIA
CITY: HOUSTON HIGHWAY NO. 6
CORR. SECT. 008 BRAYWAY NO. 380
0912 31 196 CR 403 110



- LEGEND**
- ⊛ HORIZONTAL CURVE NUMBER
 - ⊠ DRIVEWAY NUMBER
 - F-F FACE OF CURB TO FACE OF CURB
 - ① 10" JOINT REINF CONC PAV
 - ② BLOCK SOODING
 - ③ DRILL SEEDING
 - DIRECTION OF TRAFFIC
 - INLET
 - MANHOLE
 - ▬ JUNCTION BOX

NOTES:

1. REFER TO INTERSECTION LAYOUTS FOR TYPE OF PROP PEDESTRIAN RAMPS, ASPHALT TRANSITION DETAILS AT SIDE STREETS, AND ADDITIONAL INTERSECTION DETAILS.
2. REFER TO MISCELLANEOUS DETAILS FOR DRIVEWAY DETAILS.
3. STATIONS AND OFFSETS FOR SIDEWALKS ARE MEASURED TO THE CENTER OF THE SIDEWALK. FOR ADDITIONAL SIDEWALK INFORMATION SEE SIDEWALK DETAIL SHEETS.
4. REFER TO STORM SEWER PLAN & PROFILES FOR ADDITIONAL INLET & MANHOLE DETAILS.

SCALE: 1" = 100' H
1" = 10' V

THESE DOCUMENTS ARE FOR INTERIM REVIEW AND NOT FOR CONSTRUCTION, BIDDING OR PERMIT PURPOSES.

RESPONSIBLE ENGINEER
BROWN & GAY ENGINEERS, INC.
TEXAS LICENSE NO. 107602
BROWN & GAY ENGINEERS, INC.
TBE FIRM REGISTRATION NO. 1046

BROWN & GAY ENGINEERS, INC.
Houston • Austin • Dallas • San Antonio • Fort Worth
Texas Registration # 1046

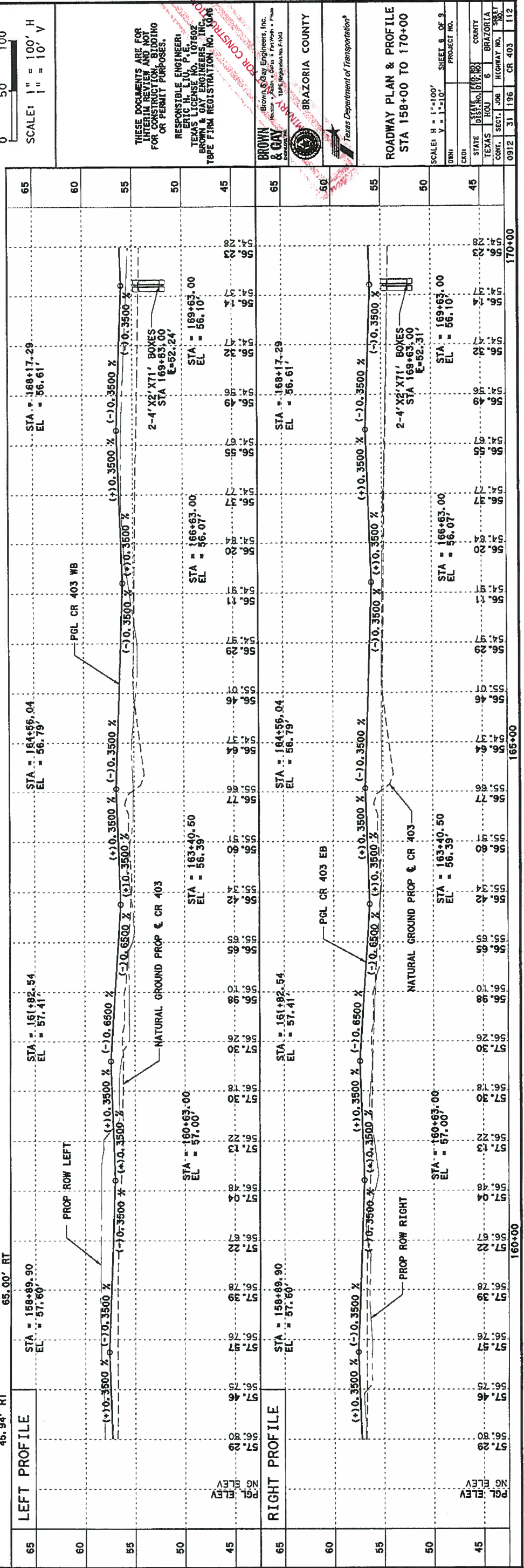
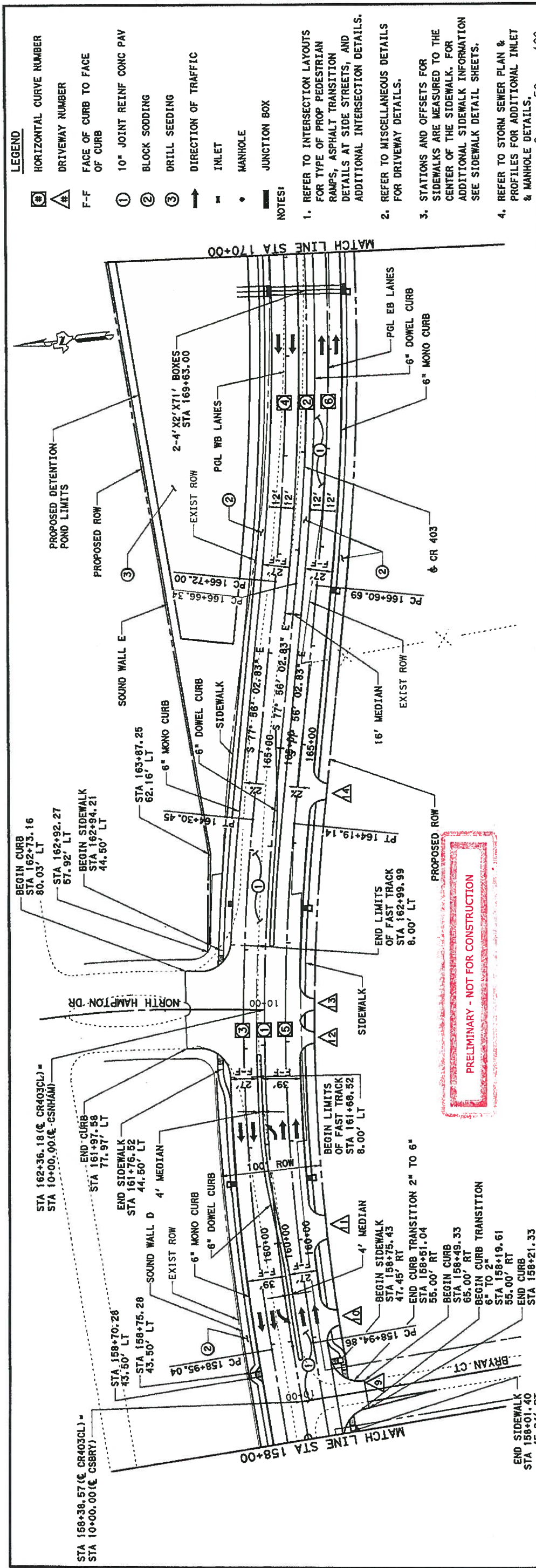
BRAZORIA COUNTY
Texas Department of Transportation

ROADWAY PLAN & PROFILE
STA 146+00 TO 158+00

SCALE: H = 1" = 100'
V = 1" = 10'

SHEET 5 OF 9
PROJECT NO.
CR 403

STATE: TEXAS COUNTY: BRAZORIA
DISTRICT: 6 HIGHWAY NO.:
CONTRACT: 008 SHEET NO.:
DATE: 09/12/13 CR 403 111



THESE DOCUMENTS ARE FOR INFORMATION ONLY AND NOT FOR CONSTRUCTION BIDDING OR PERMIT PURPOSES.

RESPONSIBLE ENGINEER:
ERIC H. LITTE, P.E.
TEXAS LICENSE NO. 107502
BROWN & GAY ENGINEERS, INC.
TYPE FIRM REGISTRATION NO. 006

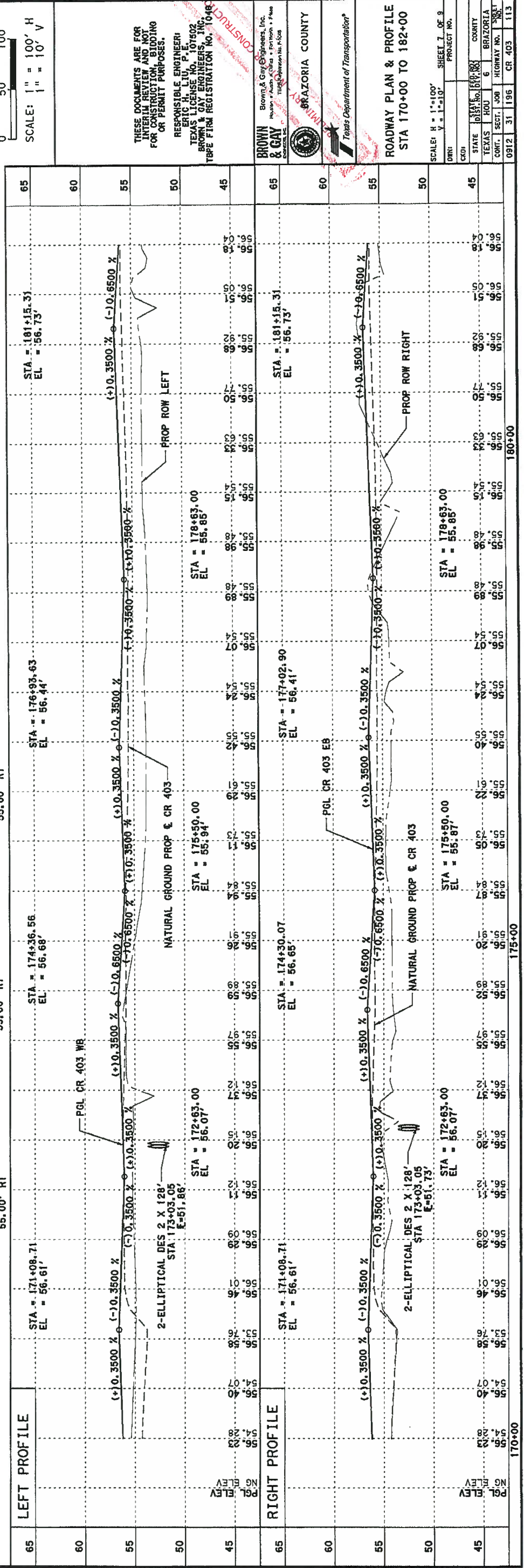
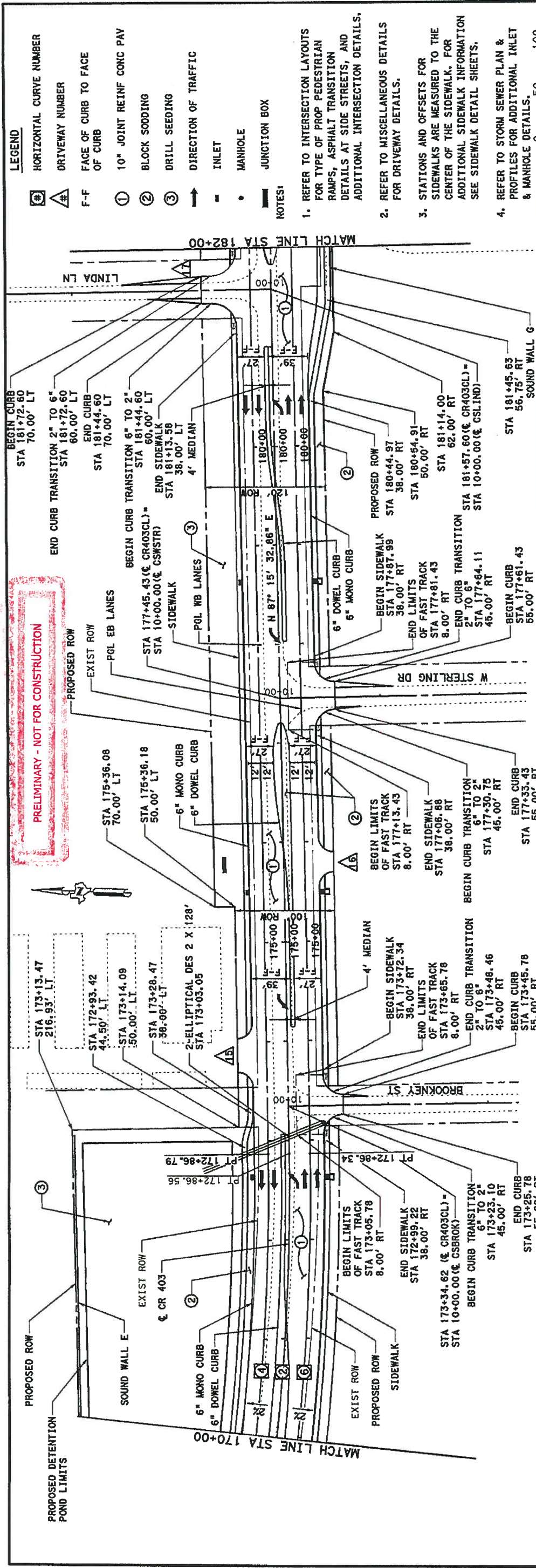
BROWN & GAY ENGINEERS, INC.
1000 West Loop West, Suite 1000
Houston, Texas 77060-2900
Phone: (713) 861-1000
Fax: (713) 861-1001

BRAZORIA COUNTY
Texas Department of Transportation

ROADWAY PLAN & PROFILE
STA 158+00 TO 170+00

SCALE: H = 1" = 100', V = 1" = 10'

SHEET 8 OF 9
PROJECT NO. 0912 31 196 CR 403 112



- LEGEND**
- ⊠ HORIZONTAL CURVE NUMBER
 - ⊠ DRIVEWAY NUMBER
 - F-F FACE OF CURB TO FACE OF CURB
 - ① 10" JOINT REINF CONC PAY
 - ② BLOCK SODDING
 - ③ DRILL SEEDING
 - DIRECTION OF TRAFFIC
 - INLET
 - MANHOLE
 - ▬ JUNCTION BOX
- NOTES:**
- REFER TO INTERSECTION LAYOUTS FOR TYPE OF PROP PEDESTRIAN RAMPS, ASPHALT TRANSITION DETAILS AT SIDE STREETS, AND ADDITIONAL INTERSECTION DETAILS.
 - REFER TO MISCELLANEOUS DETAILS FOR DRIVEWAY DETAILS.
 - STATIONS AND OFFSETS FOR SIDEWALKS ARE MEASURED TO THE CENTER OF THE SIDEWALK. FOR ADDITIONAL SIDEWALK INFORMATION SEE SIDEWALK DETAIL SHEETS.
 - REFER TO STORM SEWER PLAN & PROFILES FOR ADDITIONAL INLET & MANHOLE DETAILS.

THESE DOCUMENTS ARE FOR THE DESIGN REVIEW AND NOT FOR CONSTRUCTION BIDDING OR PERMIT PURPOSES.

RESPONSIBLE ENGINEER
ERIC H. LIU, P.E.
TEXAS LICENSE NO. 101502
BROWN & GAY ENGINEERS, INC.
TYPE FIRM REGISTRATION NO. 10148

BROWN & GAY ENGINEERS, INC.
1333 W. LOOP WEST, SUITE 1000
HOUSTON, TEXAS 77027
TEL: 713.865.1333
FAX: 713.865.1334

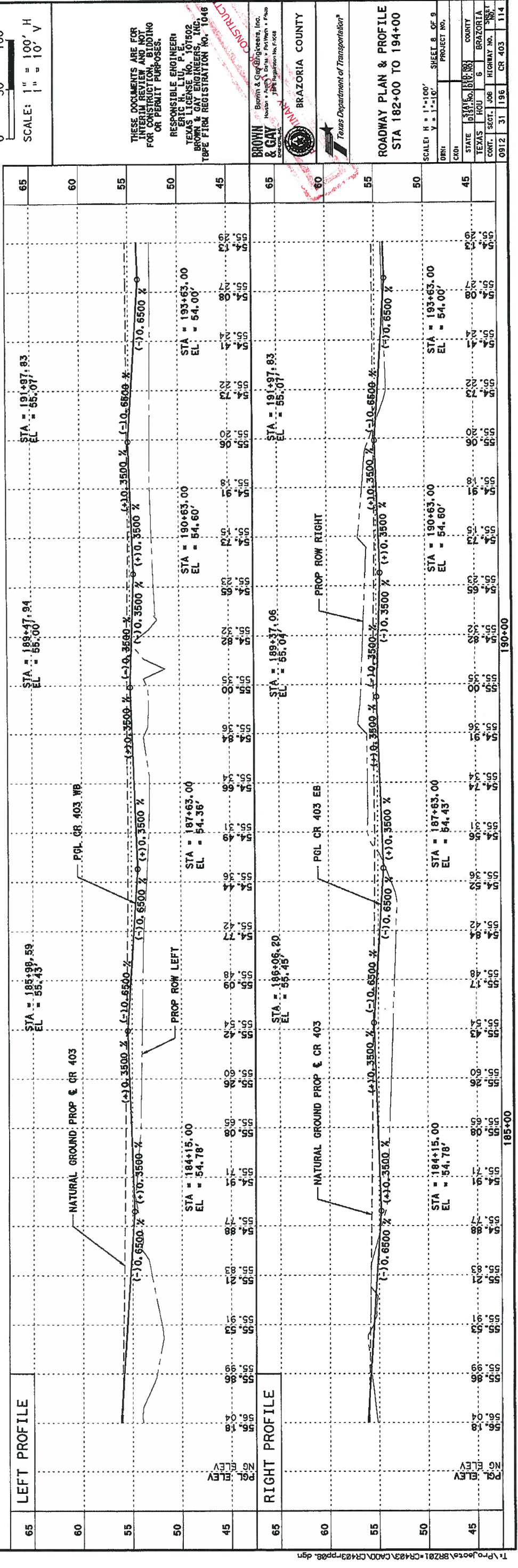
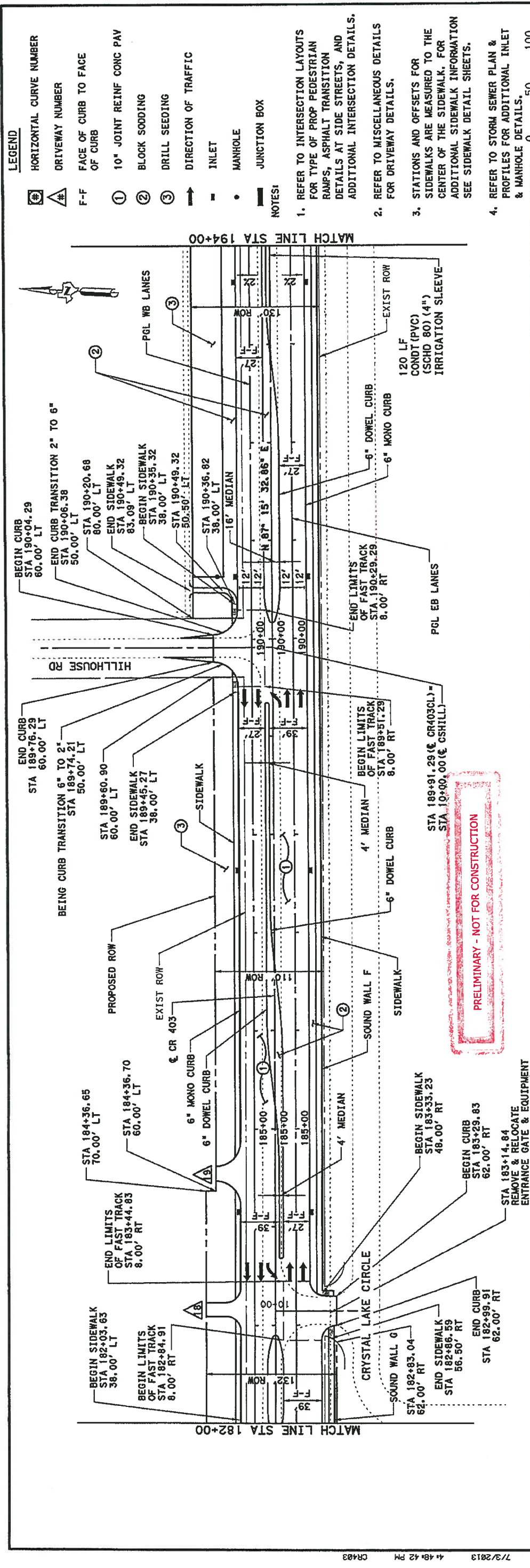
BRAZORIA COUNTY
Texas Department of Transportation

ROADWAY PLAN & PROFILE
STA 170+00 TO 182+00

SCALE: H = 1"=100'
V = 1"=10'

SHEET 7 OF 9
PROJECT NO.

STATE	TEXAS	COUNTY	BRAZORIA
DIST. NO.	151	SECTION	6
JOB NO.	0912	DATE	31 196
PROJECT NO.	113		



- LEGEND**
- ⊠ HORIZONTAL CURVE NUMBER
 - ⊠ DRIVEWAY NUMBER
 - F-F FACE OF CURB TO FACE OF CURB
 - ① 10" JOINT REINF CONC PAV
 - ② BLOCK SOODING
 - ③ DRILL SEEDING
 - DIRECTION OF TRAFFIC
 - INLET
 - MANHOLE
 - ▬ JUNCTION BOX
- NOTES:**
- REFER TO INTERSECTION LAYOUTS FOR TYPE OF PROP PEDESTRIAN RAMPS, ASPHALT TRANSITION DETAILS AT SIDE STREETS, AND ADDITIONAL INTERSECTION DETAILS.
 - REFER TO MISCELLANEOUS DETAILS FOR DRIVEWAY DETAILS.
 - STATIONS AND OFFSETS FOR SIDEWALKS ARE MEASURED TO THE CENTER OF THE SIDEWALK. FOR ADDITIONAL SIDEWALK INFORMATION SEE SIDEWALK DETAIL SHEETS.
 - REFER TO STORM SEWER PLAN & PROFILES FOR ADDITIONAL INLET & MANHOLE DETAILS.

SCALE: 1" = 100' H
1" = 10' V

THESE DOCUMENTS ARE FOR INTERIM REVIEW AND NOT FOR CONSTRUCTION, BIDDING OR PERMIT PURPOSES.

RESPONSIBLE ENGINEER
ERIC H. LUTZ, P.E.
TEXAS REGISTERED PROFESSIONAL ENGINEER
BROWN & GAY ENGINEERS, INC.
TYPE FIRM REGISTRATION NO. 1046

BROWN & GAY ENGINEERS, INC.
Houston • Austin • Dallas • Fort Worth • Paso Del Norte
Texas Registration No. F-204

BRAZORIA COUNTY
Texas Department of Transportation

ROADWAY PLAN & PROFILE
STA 182+00 TO 194+00

SCALE: H = 1" = 100'
V = 1" = 10'

SHEET 8 OF 9
PROJECT NO.
COUNTY
STATE
BRAZORIA
COUNTY
HIGHWAY NO.
CR 403
JOB NO.
0912 31 196
CR 403
SHEET NO.
114

LEGEND

- ☐ HORIZONTAL CURVE NUMBER
- △ DRIVEWAY NUMBER
- F-F FACE OF CURB TO FACE OF CURB
- ① 10" JOINT REINF CONC PAV
- ② BLOCK SOODING
- ③ DRILL SEEDING
- DIRECTION OF TRAFFIC
- INLET
- MANHOLE
- ▬ JUNCTION BOX

NOTES

1. REFER TO INTERSECTION LAYOUTS FOR TYPE OF PROP PEDESTRIAN RAMPS, ASPHALT TRANSITION DETAILS AT SIDE STREETS, AND ADDITIONAL INTERSECTION DETAILS.
2. REFER TO MISCELLANEOUS DETAILS FOR DRIVEWAY DETAILS.
3. STATIONS AND OFFSETS FOR SIDEWALKS ARE MEASURED TO THE CENTER OF THE SIDEWALK. FOR ADDITIONAL SIDEWALK INFORMATION SEE SIDEWALK DETAIL SHEETS.
4. REFER TO STORM SEWER PLAN & PROFILES FOR ADDITIONAL INLET & MANHOLE DETAILS.

SCALE: 1" = 100' H
1" = 10' V

THESE DOCUMENTS ARE FOR INTERIM REVIEW AND NOT FOR CONSTRUCTION, BIDDING OR PERMIT PURPOSES.

RESPONSIBLE ENGINEER
BROWN & GAY ENGINEERS, INC.
TEXAS LICENSE NO. 107502
BROWN & GAY ENGINEERS, INC.
TYPE FIRM REGISTRATION NO. 1046

BROWN & GAY ENGINEERS, INC.
10000 West Loop South, Suite 1000
Houston, Texas 77042
Tel: 281.486.1000
Fax: 281.486.1001
www.brownandgay.com

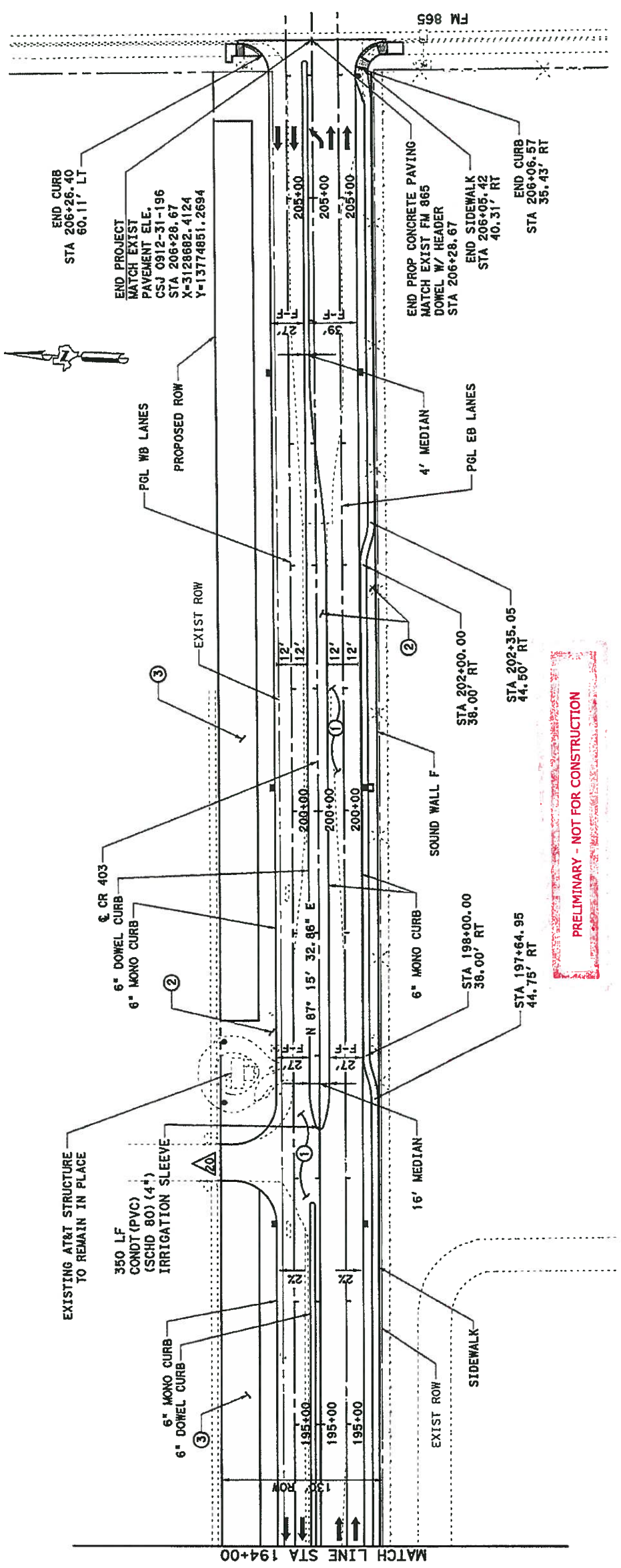
BRAZORIA COUNTY
PRELIMINARY
Texas Department of Transportation

ROADWAY PLAN & PROFILE
STA 194+00 TO 206+28.67

SCALE: H = 1" = 100'
V = 1" = 10'

PROJECT NO. 0912-31-196
SHEET 8 OF 9

STATE: TEXAS
COUNTY: BRAZORIA
HIGHWAY NO.: 6
SHEET NO.: 8



Station	Profile Type	Elevation	Notes
65	LEFT PROFILE	STA = 195+33.00 EL = 54.59'	
60			
55			
50			
45			
65	RIGHT PROFILE	STA = 195+33.00 EL = 54.59'	
60			
55			
50			
45			

1. Project: BR201-CR403-CA00-CR403-PP09.dgn
 7/3/2013 4:48:43 PM CR403
 PRELIMINARY - NOT FOR CONSTRUCTION
 STA 194+00 TO 206+28.67
 ROADWAY PLAN & PROFILE
 STA 194+00 TO 206+28.67
 SCALE: H = 1" = 100'
 V = 1" = 10'
 PROJECT NO. 0912-31-196
 SHEET 8 OF 9
 STATE: TEXAS
 COUNTY: BRAZORIA
 HIGHWAY NO.: 6
 SHEET NO.: 8