



## City of Pearland

3519 Liberty Drive  
Pearland, Texas 77581  
Tel: 281.652.1600  
pearlandtx.gov

Traffic Review Committee Meeting  
September 18, 2023

Members present:

Yolci Ramirez, Traffic Engineer  
Michael Walker, Sergeant Police Department  
Rajendra Shrestha, PE, City Engineer  
Robert Alfrey, Maintenance Supervisor  
Mario Tellez, Traffic Superintendent  
Jack Shick, PE, PTOE, Consultant Traffic Engineer

### ***Request # 0002***

#### **Concern/Issue**

The City of Pearland was notified of the traffic hazard/congestion issues along Riverstone Ranch Drive and Riverstone Falls Drive from parents parking along the streets to drop off/pick up school kids from South Belt Elementary and Thompson Intermediate Middle School.

A trail system is located adjacent to Riverstone Falls Drive and Riverstone Ranch Dr, which provides access to pedestrians to both schools. The use of Riverstone Falls Dr and Riverstone Ranch Drive for parking and drop off/pick up during school rush hour has caused increased traffic safety issues, which may include.

1. Blocking the intersection of Riverstone Ranch Drive at Riverstone Falls Drive: Prevents drivers to go through the intersection.
2. Blocking the southbound approach of Riverstone Falls Drive from drivers going through the intersection or wanting to turn right into the intersection from Hughes Road.
3. Issue with emergency vehicles: Negatively impact the emergency apparatus' ability to utilize the street to respond to emergencies
4. Impedes traffic: Potential for accidents due to increased pedestrians and turning vehicles.

**Request:** Installation of “No Stopping, Standing and Parking Signs”

On Wednesday, **August 16, 2023**, the Traffic Review Committee met and discussed the above-referenced Request.

Based on the complaint and supporting evidence, including pictures, videos, and site visits, the traffic calming committee determined the installation of “No Stopping, Standing and Parking Signs” during school days from (7:00 AM to 9:00 AM and 3:15 PM to 4:00 PM) are warranted and authorizes the placement of such signs. The installation of the sign will help improve mobility and safety of the street. The following streets are identified for the “No Stopping, Standing and Parking Signs” Installation:

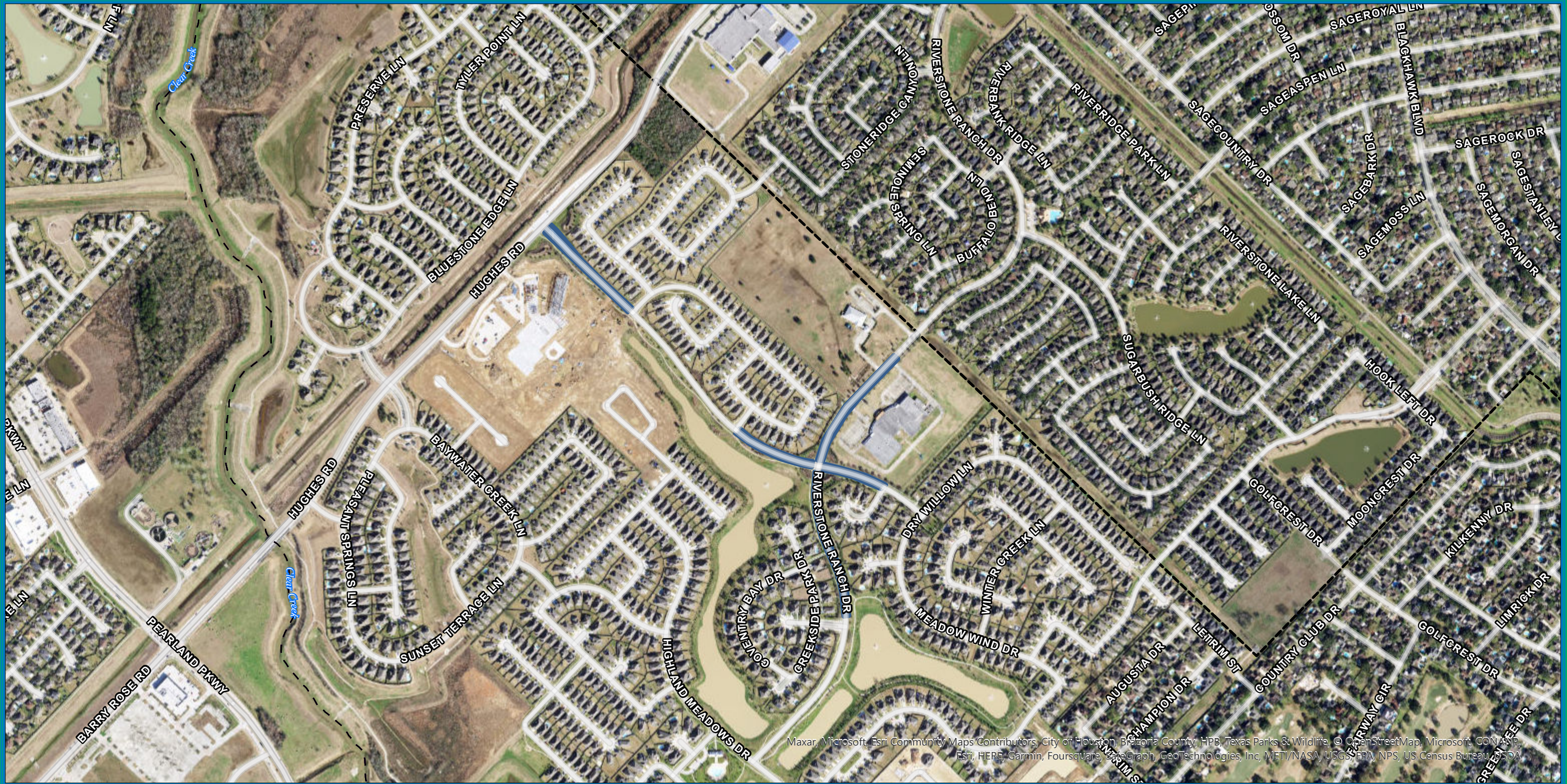
1. Riverstone Falls Drive from New Castle Heights to Gianna Bella Ct: The traffic calming committee recommends the installation of “No Stopping, Standing, and Parking Signs.”
2. Riverstone Falls Drive from Hughes Road to Dunsmore Oak Drive: The traffic calming committee recommends the installation of “No Stopping, Standing, and Parking Signs.”
3. Riverstone Ranch Drive from Riverstone Falls Drive to Riverstone Landing Drive: The traffic calming committee recommends the installation of “No Stopping, Standing, and Parking Signs.”
4. Riverstone Ranch Drive from Riverstone Falls Drive to End of School Property: The traffic calming committee recommends the installation of “No Stopping, Standing, and Parking Signs.”

**Policy Guideline:**

The Traffic Review Committee finds that this Request falls within the parameters of Ordinance 1301-1 and that the Traffic Review Committee serves as the Decision-Making Body for this issue. In addition, The City of Pearland Traffic Policy Section II A allows the City Engineer to recommend implementation in accordance with the TMUTCD, the latest edition based on safety and mobility concerns.

Signed,

Yolci Ramirez, EIT  
Traffic Engineer



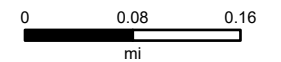
Maxar, Microsoft, Esri Community Maps Contributors, City of Houston, Brazoria County, HPB, Texas Parks & Wildlife, © OpenStreetMap, Microsoft, CONASP, Esri, HERE, Garmin, Foursquare, Bing, GeoTechnologies, Inc, METI/NASA, USGS, EPA, NPS, US Census Bureau, USDA

# CITY OF PEARLAND

“No Stopping, Standing, and Parking Signs.”



1 inch = 752 feet



This product is for informational purposes and may not have been prepared for or be suitable for legal, engineering, or surveying purposes. It does not represent an on-the-ground survey and represents only the approximate relative location of property boundaries.

MAP PREPARED: SEPTEMBER 2023  
CREATED WITH WEB PRINT TOOL