



# Transportation Conformity Report Form

**Project Facility Name:** Mykawa Road

**MPO Project IDs:** 7602

**Project CSJ Numbers:** 0912-31-319 and 0912-72-564

**Project Limits**

**From:** Beltway 8

**To:** Farm-to-Market Road (FM) 518

**Project Sponsor:** City of Pearland

**Project Description<sup>1</sup>:** The City of Pearland, in cooperation with the Texas Department of Transportation (TxDOT) Houston District, proposes to reconstruct and widen the existing Mykawa Road between Beltway 8 and Farm-to-Market Road (FM) 518 to include two 12-foot travel lanes in each direction with a 16-foot divided median. Between FM 518 and Cherry Street, Mykawa Road is an undivided, four-lane concrete roadway with 12 foot travel lanes, and a large ditch on the east side in an 80 foot ROW width. Between Cherry Street and Orange Street, the existing facility is a four lane concrete roadway with 12 foot travel lanes, and a large ditch on the west side in an 100 foot ROW width. From Orange Street to the Beltway 8 westbound frontage road, Mykawa Road consists of two twelve foot travel lanes with open ditches on either side in a varied ROW width. There are currently no pedestrian or bicycle accommodations.

The proposed roadway would require approximately 22 acres of new right-of-way and would be constructed within a 100-foot right-of-way width and include curb and gutter with underground drainage.

A 10-foot shared-use path is proposed on the west side the roadway for the entire length of the project. A 6-foot sidewalk is proposed on the east side from FM 518 to Orange Street.

The project would also include storm water drainage and detention, landscaping, street lighting, modifications to three traffic signals, as warranted. A project location map is included as Attachment A.

---

**Date of anticipated environmental decision/re-evaluation:** March 2022

**Let Year:** 2023

**ETC<sup>2</sup> Year:** 2025

**Conformity Year<sup>3</sup>:** 2030

**Total Project Cost:** \$42.935M

- 
- <sup>1</sup> Project description, project details, and other project information should include enough detail in order to make a determination of project consistency with the MTP, TIP, STIP, and corresponding transportation conformity determination.
  - <sup>2</sup> The ETC or estimated time of completion year is the date the entire project as described in the environmental review document will be open to traffic.
  - <sup>3</sup> If this project is NOT considered regionally significant by the MPO, enter "N/A – non-regionally significant". In addition, note that the conformity year is sometimes referred to as the network year. When a MTP identifies a specific timeframe during which a project will be operational, the last year of that timeframe is the conformity year.



# Transportation Conformity Report Form

**Adding Capacity?**     Yes     No

**Counties:** Brazoria and Harris

**Project Classification:**  CE     EA     EIS     Re-evaluation

## Important Information

A determination of project-level conformity is not permanent. It is recommended that conformity be checked early and often in the project development process, but that this specific form be coordinated within 60 days of the anticipated environmental decision to avoid coordinating the form more than once. The following events would require a project's conformity determination to be reevaluated.

1. Changes to the project's design concept, scope, limit, funding, or estimated time of completion (ETC) year
2. Changes to the project's listing in the MTP, TIP, or STIP related to design concept, scope and limits; funding or ETC year
3. New conformity determinations on the applicable MTP, TIP, or STIP (even if it occurs after the FHWA/FTA project-level conformity determination has been made)

In particular, if there is a planned MTP update/amendment and associated transportation conformity determination expected to be completed on or near the time of project approval, it is recommended that the project sponsor prepare this conformity determination after the plan update/amendment and associated transportation conformity determination is completed, if the update/amendment will affect the project as specified in item 1 above. Consult with ENV air specialist if further assistance is needed.

## Instructions

*Check the appropriate box for each question, using the most current information available, and be aware that the answers will dictate which questions must be answered for each specific project. Start with Step One, and follow the instructions included in each step, if any additional instructions are provided.*

*The information displayed between carets, <like this> represents a field that should be customized with project specific information. In the electronic file, these fields are highlighted in grey. Content prompts, like **Choose an item**, represent dropdown menus, which also must be customized with project specific information.*

***If the form requires the preparer to "STOP" because something is lacking, then it is recommended that the time it would take to make the necessary changes to the MTP, TIP, or project should be re-evaluated against the project's proposed letting date (i.e., letting date may need to be adjusted).***

**Step 1:** Is this a federal project with a federal lead other than FHWA/FTA?

**Yes – STOP. Transportation conformity does not apply to the project, however, general conformity may apply.**

*Consult the ENV air specialist regarding this project and potential general conformity requirements.*

**No – Continue to Step 2.**



## Transportation Conformity Report Form

**Step 2:** Is this a FHWA/FTA project<sup>4</sup>?

- Yes – Proceed to Step 4.  
 No – Continue to Step 3.

**Step 3:** Is this project considered regionally significant<sup>5</sup> in accordance with [40 CFR 93.101](#) or [30 TAC 114.260\(d\)\(2\)\(iv\)](#)?

- Yes – Continue to Step 4.  
 No – **STOP. In accordance with 40 CFR 93.102(a)(2), a project level transportation conformity determination is not required for non-regionally significant, non-FHWA/FTA projects.**

**Step 4:** Is the project located in a nonattainment or maintenance area<sup>6</sup> for ozone<sup>7</sup>, nitrogen dioxide (NO<sub>2</sub>), carbon monoxide (CO), particulate matter (PM<sub>2.5</sub> or PM<sub>10</sub>)?

- Yes – **Transportation conformity rules apply.** The project is located in the EPA designated **Houston-Galveston-Brazoria** marginal and serious nonattainment<sup>8</sup> area for **2015 and 2008 ozone, respectively**. Continue to Step 5.  
 No – **STOP. Transportation conformity does not apply to the project.**

**Step 5:** Is the project exempt<sup>9</sup> from conformity in accordance with [40 CFR 93.126<sup>10</sup>](#) or [40 CFR 93.128<sup>11</sup>](#)?

- Yes – **STOP. Transportation conformity does not apply to the project.** This project falls under the following exemption: *Choose an item.*  
 No – Continue to Step 6.

**Step 6:** Is the project exempt from the regional conformity analysis in accordance with [40 CFR 93.127](#)?

- Yes – **The project is exempt from regional conformity requirements.** This project falls under the following exemption: *Choose an item.* Proceed to Step 16.  
 No – Continue to Step 7.

<sup>4</sup> Note that this includes projects which may not have federal funding but would otherwise require federal approval.

<sup>5</sup> If a project is on the MPO's NON-regionally significant project list, it is not regionally significant. Each MPO may have different criteria for designating a project as regionally significant.

<sup>6</sup> If unsure about the nonattainment or maintenance status, it can be checked in multiple locations, including: the [EPA Greenbook](#), the [TCEQ website](#), or the applicable table in the [Air Quality toolkit](#).

<sup>7</sup> Note the 1997 ozone standard was revoked by EPA.

<sup>8</sup> Area classifications can be either maintenance, marginal nonattainment, moderate nonattainment, serious nonattainment, severe nonattainment, or extreme nonattainment

<sup>9</sup> Most added capacity projects will not be exempt, whereas most non-added capacity projects will be exempt.

<sup>10</sup> Ultimately, the interpretation of what projects types meet these exemption criteria is under the purview of the federal lead agency. For example, although it could be interpreted to meet some of the exemption project types, a project changing from general purpose to managed lanes is NOT considered to be exempt from conformity.

<sup>11</sup> Grouped CSJ projects, by rule, must be exempt under these criteria.



**Step 7:** Does the project fall within the boundaries<sup>12</sup> of an MPO?

- Yes – Proceed to Step 9.
- No – Continue to Step 8.

**Step 8:** Is the project design concept, scope and limits, conformity analysis year, and funding consistent with an approved<sup>13</sup> regional conformity analysis for an isolated rural area that meets the requirements of [40 CFR 93.109](#)?

- Yes – **The project is consistent with an approved regional conformity determination that meets the requirements of 40 CFR 93.109 for isolated rural areas.** Proceed to Step 16.
- No – **STOP. The project is not consistent with a regional conformity determination for an isolated rural area. TxDOT will not take final action until the project is consistent with an approved regional conformity determination that meets the requirements of 40 CFR 93.109 for isolated rural areas.**

*Do not sign this form. Please ensure that the project is included in and consistent with an approved regional conformity determination then reevaluate the project using this form.*

**Step 9:** Are all of the project phases<sup>14</sup> for the entire project described in the environmental document included in the fiscally constrained portion of the MTP?

- Yes – Continue to Step 10.
- No – **STOP. The project was not included in the area’s regional conformity determination, and, therefore, is not consistent with it.** The MTP needs to be amended to include this project and a new conformity determination needs to be made on the MTP before consistency can be determined for the project, or the project needs to be revised to be consistent with the existing MTP.

*Consult with the district TP&D and MPO on how to proceed.*

**Step 10:** Is at least one phase of the project beyond the NEPA study (corridor study) included in either the appropriate year of the conforming TIP<sup>15</sup> or in Appendix D (if will not be let within the timeframe of the TIP)?

- Yes – Continue to Step 11.

<sup>12</sup> i.e., within a Metropolitan Planning Area (MPA)

<sup>13</sup> The consultation partners are responsible for approving regional conformity analyses.

<sup>14</sup> A project phase is a separate portion of a project such as: NEPA study, ROW acquisition, final design, construction, and/or partial construction.

<sup>15</sup> In Texas, a conforming TIP is one that has been included into the STIP, so projects must be in the STIP in order to show that they come from a conforming TIP.



## Transportation Conformity Report Form

- No – **STOP. The project is not included in the conforming TIP and is therefore not consistent with it.** At least one phase of the project must be added to the conforming TIP before consistency can be determined.

*Consult with the district TP&D and MPO on how to proceed.*

**Step 11:** Are the current project limits the same<sup>16</sup> or do they fall within the project limits listed in the MTP and STIP?

- Yes – Continue to Step 12.
- No – **STOP. The project is not consistent with the conforming MTP and TIP.** Either the MTP and TIP, or the project needs to be revised before consistency can be determined.

*Consult with the district TP&D and MPO on how to proceed.*

**Step 12:** Is the activity being proposed the same as that in the MTP and STIP project description in both type<sup>17</sup> of facility and number<sup>18</sup> of lanes?

- Yes – Continue to Step 13.
- No – **STOP. The project is not consistent with the conforming MTP and TIP.** Either the MTP and TIP, or the project needs to be revised before consistency can be determined.

*Consult with the district TP&D and MPO on how to proceed.*

**Step 13:** Does the project's ETC year fall between its identified conformity year<sup>19</sup> in the MTP and the previous conformity year identified in the MTP?

- Yes – Continue to Step 14.
- No – **STOP. The project is not consistent with the conforming MTP and TIP.** Either the MTP and TIP or the project needs to be revised before consistency can be determined.

*Consult with the district TP&D and MPO on how to proceed.*

- N/A – This project is non-regionally significant. Continue to Step 14.

**Step 14:** Is the estimated total project cost or the cost identified in the MTP greater than \$1,500,000?

- Yes – Proceed to Step 15.

<sup>16</sup> The limits are considered the same if the logical termini noted in the environmental document fall within the limits of the project noted in the MTP or the logical termini noted in the environmental document are not significantly greater (~1 mile) than the limits noted in the MTP due to transition areas for safety or other factors required to be considered when establishing logical termini for environmental document purposes.

<sup>17</sup> The type of activity refers to the type of enhancement, such as: main lanes, frontage roads, HOV lanes, direct connectors, bridge replacement, etc...

<sup>18</sup> The number refers to the amount of each activity type, such as: number of main lanes or number of frontage lanes.

<sup>19</sup> For the purposes of this determination, the term conformity year is synonymous with the network analysis year for the MTP.



## Transportation Conformity Report Form

- No – Fiscal constraint requirements do not apply. This project is consistent with the currently conforming MTP and TIP. Proceed to Step 16.

**Step 15:** Does the estimated project cost exceed what is contained in the MTP by more than 50%<sup>20</sup>?

- Yes – **STOP. The project is not consistent with the MTP and TIP because it is not fiscally constrained.** Either the MTP and TIP, or the project needs to be revised before consistency can be determined or a case-by-case decision will need to be made by FHWA.

*Consult with the district TP&D and MPO on how to proceed.*

- No – **This project is consistent with the currently conforming MTP and TIP.** Continue to Step 16.

**Step 16:** Is the project located in either a CO, PM<sub>2.5</sub>, or PM<sub>10</sub> nonattainment or maintenance area?<sup>21</sup>

- Yes – Continue to Step 17.
- No – **Hot-spot conformity requirements do not apply.** Proceed to Step 21.

**Step 17:** Is this a state or local project with NO federal funding and NO federal decision required?

- Yes – **Hot-spot conformity requirements do not apply.** Proceed to Step 21.
- No – **Hot-spot conformity requirements apply.** Request the local MPO to initiate a consultation call with the Consultation Partners.

*Fill out the Hot-Spot Analysis Data for a Consultation Partner Decision Form to present the project data to the Consultation Partners for review prior to the consultation call.*

Continue to Step 18.

**Step 18:** Did the consultation partners determine that this is a project of air quality concern (POAQC)?

- Yes – **A hot-spot analysis is required and must be approved by the consultation partners.**

*Conduct a hot-spot analysis in accordance with the methodology approved by the consultation partners, and use the applicable [EPA hot-spot guidance](#).*

Continue to Step 19.

- No – **A hot-spot analysis is not required because the project is not a POAQC. The consultation partners made this determination on <insert date>.**

Proceed to Step 21.

---

<sup>20</sup> Multiply the MTP cost by 1.5. The current estimated total project cost should not exceed this amount.

<sup>21</sup> Note that this currently only applies to projects in El Paso.



**Step 19:** Does the approved hot-spot analysis verify that the project will not cause, contribute to, or worsen a violation of applicable CO, PM<sub>2.5</sub>, or PM<sub>10</sub> NAAQS or that the project will at least improve conditions from that of the no-build alternative?

- Yes – **The project is not anticipated to cause, contribute to, or worsen a violation of the applicable NAAQS.** Continue to Step 20.
- No – **STOP. The project, as it is currently presented, does not comply with conformity requirements because it is anticipated to cause, contribute to, or worsen a violation of the applicable NAAQS.**

*Identify and get consultation partner agreement upon mitigation measures to offset project impacts to air quality. Reevaluate this project using this form once these mitigation measures have been identified and committed to.*

**Step 20:** Have all the agreed upon mitigation measures as well as any applicable SIP control measures received a written commitment?

- Yes – Continue to Step 21.
- No – **STOP.**

*Do not proceed until there are written commitments to implement all the agreed upon mitigation measures and any applicable SIP control measures. Reevaluate this project using this form once these commitments have been made in writing.*

- N/A because no mitigation is required and there are no applicable SIP control measures which affect this project, Continue to Step 21.

**Step 21:** The transportation conformity evaluation is complete.

*Attach applicable pages of the MTP and TIP, or the STIP, project schematics, typical sections, hot-spot analyses and determinations, and any conformity related public comment and response. Implement the following processing instructions as applicable.*

- This is a regionally significant State-only project with no FHWA/FTA action required (the answer to Steps 3 is yes); therefore:

*Submit this form to the ENV air specialist. If ENV concurs that all project level conformity requirements have been met, ENV shall sign the form below. Coordination with FHWA/FTA is not required.*

*Retain this form in the project file.*

- This is a FHWA/FTA non-exempt project (the answer to Steps 2 and 4 is yes, and the answer to Steps 5 and 6 is no); therefore:

*Submit this form to the ENV air specialist. After ENV air specialist review, ENV will coordinate this form with FHWA/FTA for a project level conformity determination. If FHWA/FTA agrees that all project level conformity requirements have been met, they shall sign the project level conformity determination line below. A project level conformity determination is not complete and project clearance cannot be given until FHWA/FTA signs this form.*

*Retain this form and any coordination with FHWA/FTA in the project file.*



**Transportation Conformity Report Form**

---

**TxDOT ENV Transportation Conformity Validation Complete:**

**Project CSJ Numbers:** 0912-31-319 and 0912-72-564

**Signature** \_\_\_\_\_

**Name:**

**Title:**

**Date:**

---

**FHWA/FTA Determination of the Project-level Conformity:**

**Signature** \_\_\_\_\_

**Name:** \_\_\_\_\_

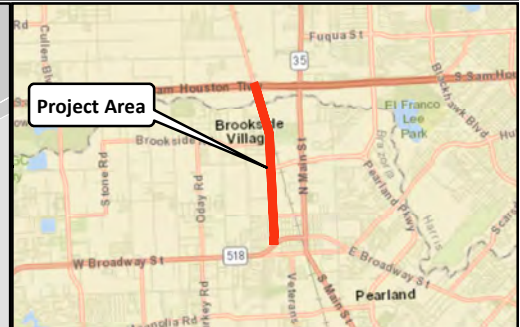
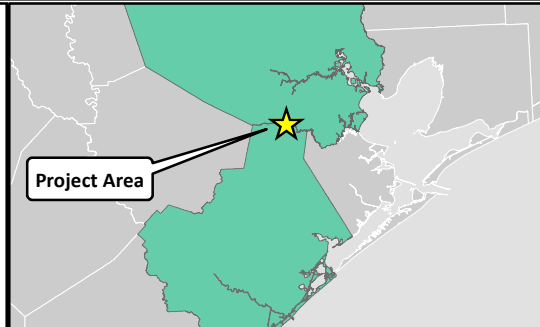
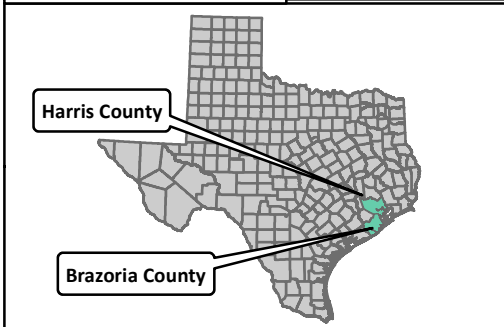
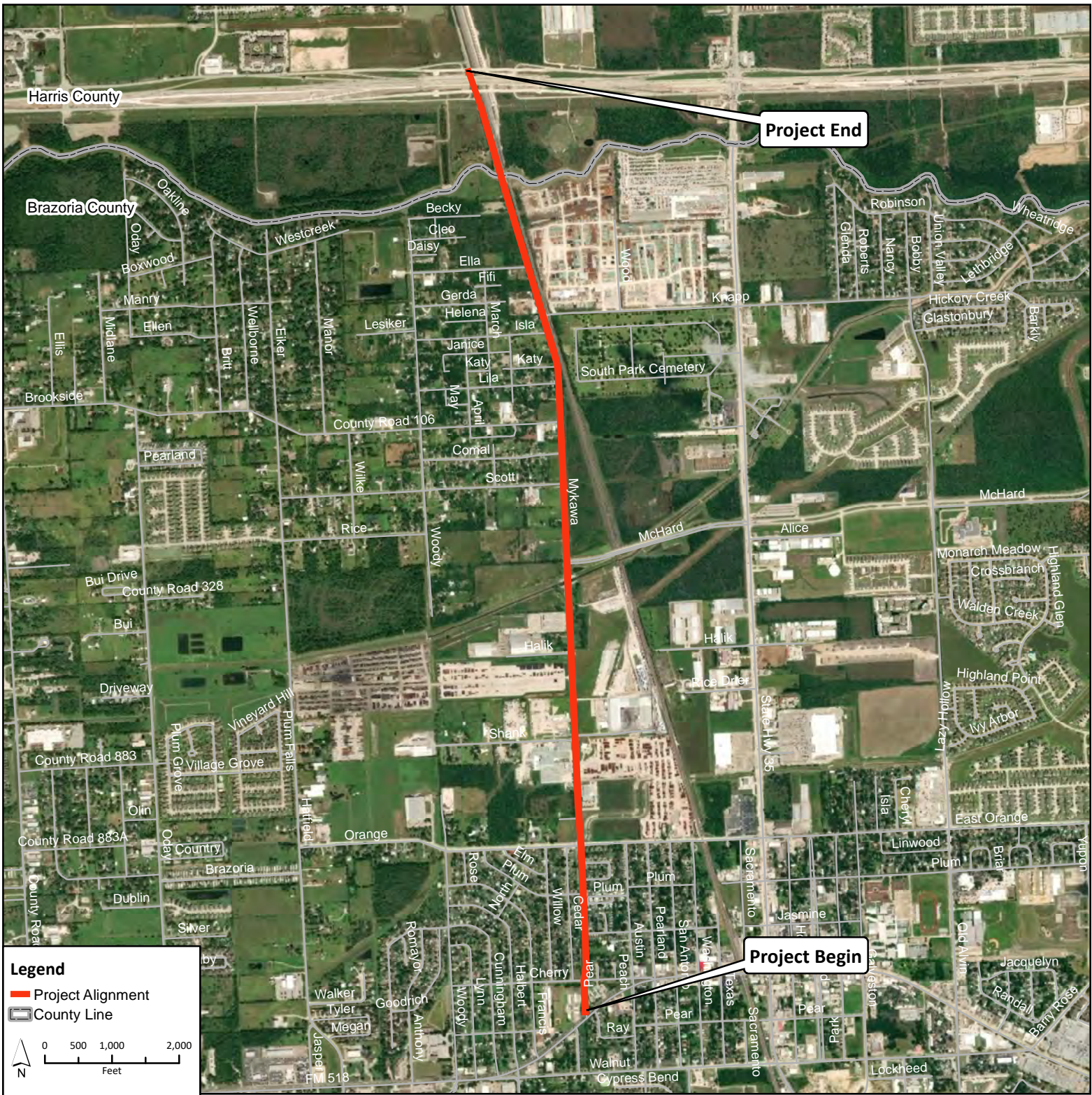
**Title:** \_\_\_\_\_

**Date:** \_\_\_\_\_



ATTACHMENT 1  
Project Location Map





Service Layer Credits: Sources: Esri, HERE, Garmin, USGS, Intermap, INCREMENT P, NRCan, Esri Japan, METI, Esri China (Hong Kong), Esri Korea, Esri (Thailand), NGCC, © OpenStreetMap contributors, and the GIS User

**PROJECT LOCATION**  
 Mykawa Road  
 Brazoria and Harris County, Texas  
 CSJ No. 0912-31-319 and 0912-72-564

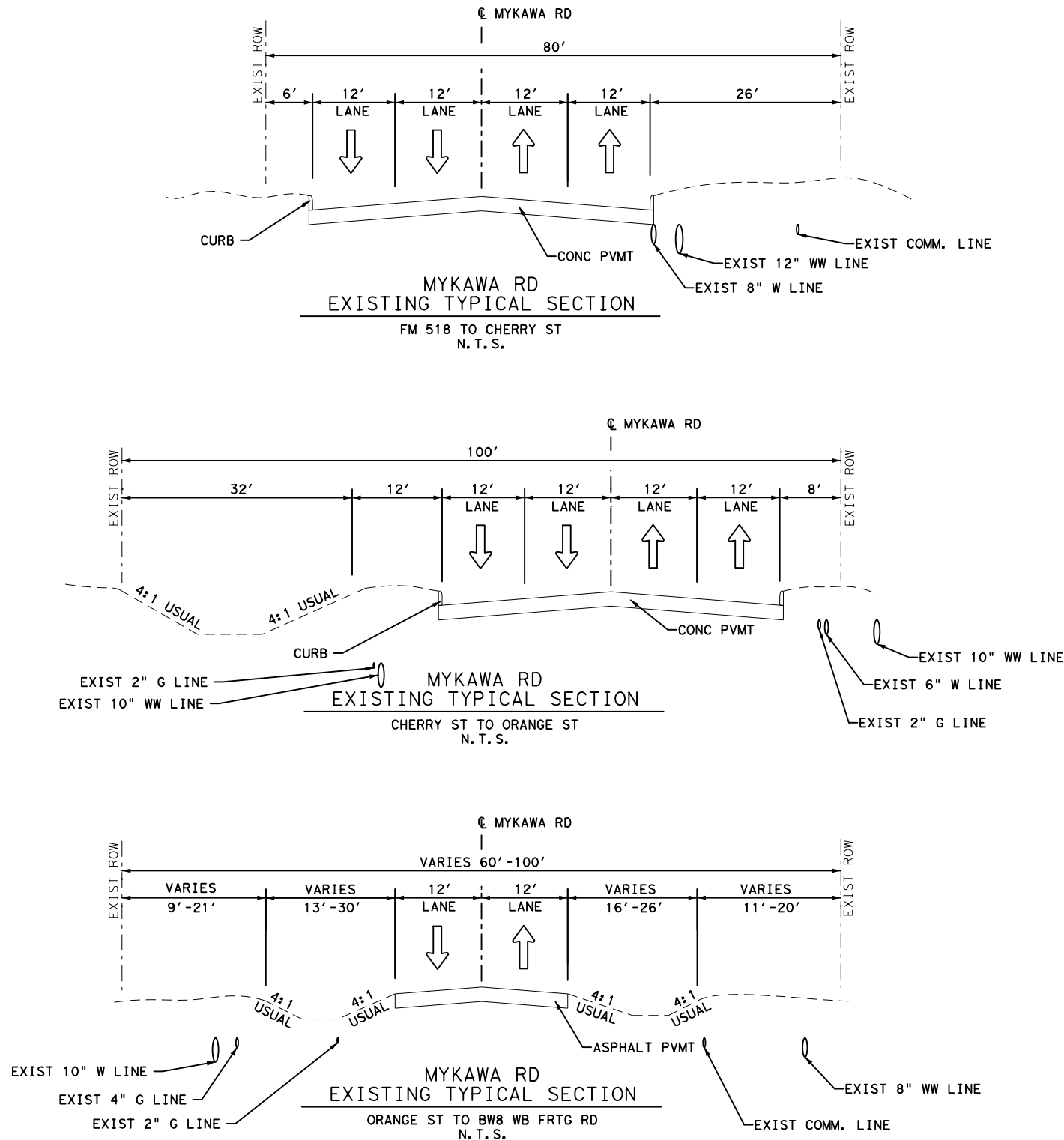


## ATTACHMENT 2

### Existing and Proposed Typical Sections

**LEGEND**

➔ EXISTING TRAFFIC DIRECTION



**60% INTERIM REVIEW ONLY**  
DOCUMENT INCOMPLETE: NOT INTENDED FOR PERMIT, BIDDING OR CONSTRUCTION

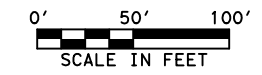
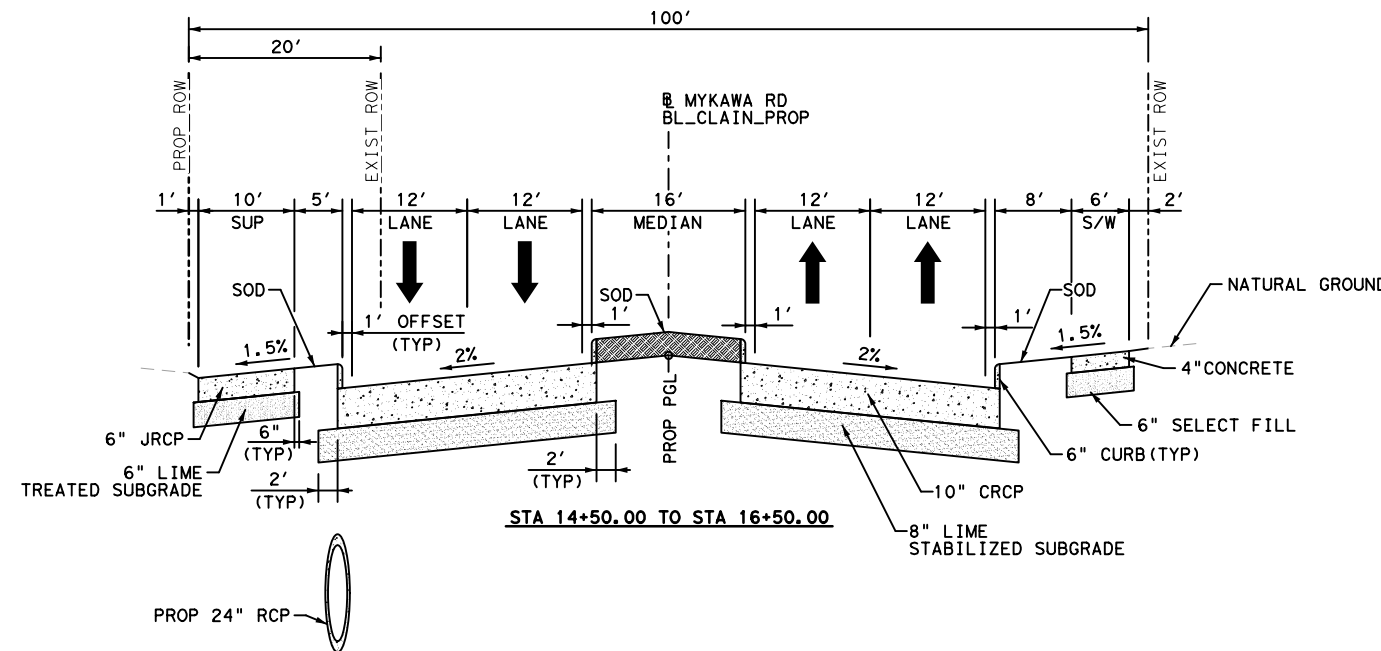
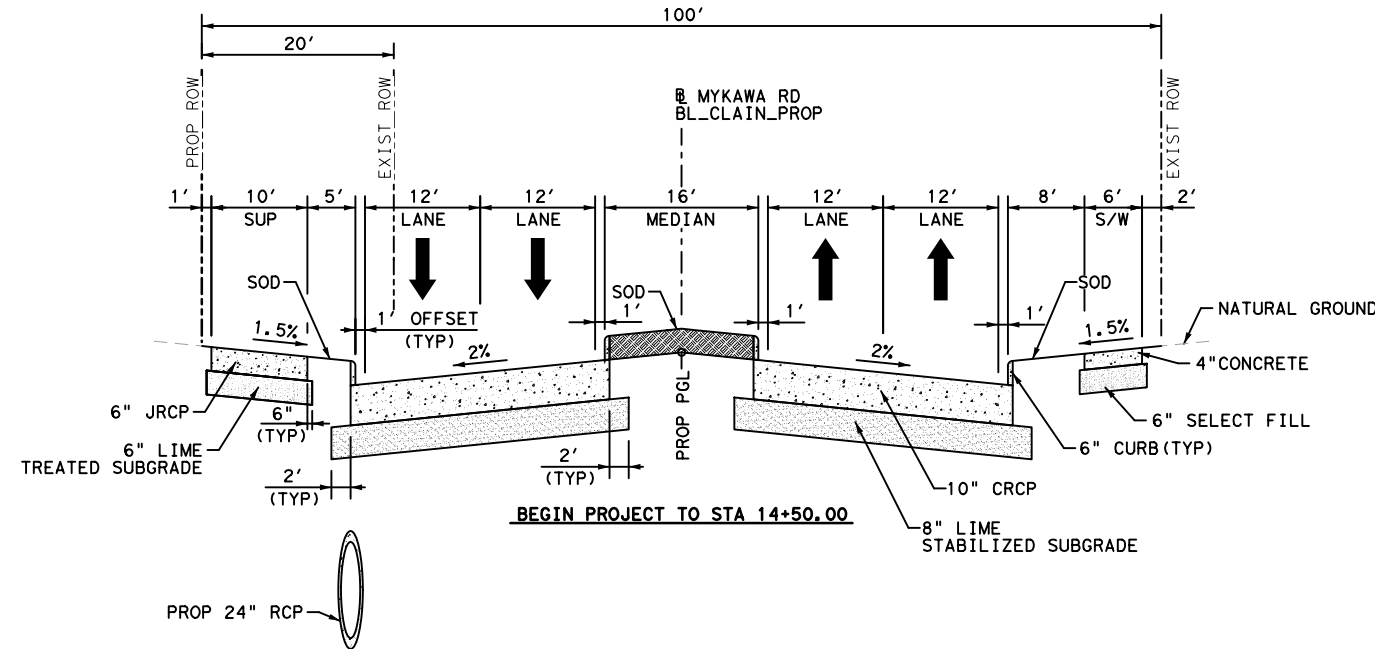
ENGINEER: XIANG LI  
P.E. SERIAL No.: 125130  
FIRM: LOCKWOOD, ANDREWS & NEWMAN, INC.  
FIRM No.: F-2814  
DATE: 6/3/2020

REV. NO.	DATE	DESCRIPTION	BY
<b>MYKAWA RD</b> <b>EXISTING TYPICAL SECTIONS</b>			
SHEET 1 OF 1			
FED. RD. DIV. NO.	FEDERAL AID PROJECT NO.		HIGHWAY NO.
6	\$PROJ\$		MYKAWA
STATE	DISTRICT	COUNTY	SHEET NO.
TEXAS	HOUSTON	BRAZORIA/HARRIS	4
CONTROL	SECTION	JOB	
0912	31	319	

Design Filename: p:\lan-pw.bentley.com\lan-pw-01\Documents\Projects\140-11006-000\4-0-Production-Working\4-1-BIM-CAD\Roadway\Typ Sections\MR\_ETYP\_01.dgn

**LEGEND**

- ➔ DIRECTION OF TRAVEL
- ▭ PROP CONC PAVEMENT
- S/W SIDEWALK
- PGL PROF GRADE LINE
- ▨ SOD



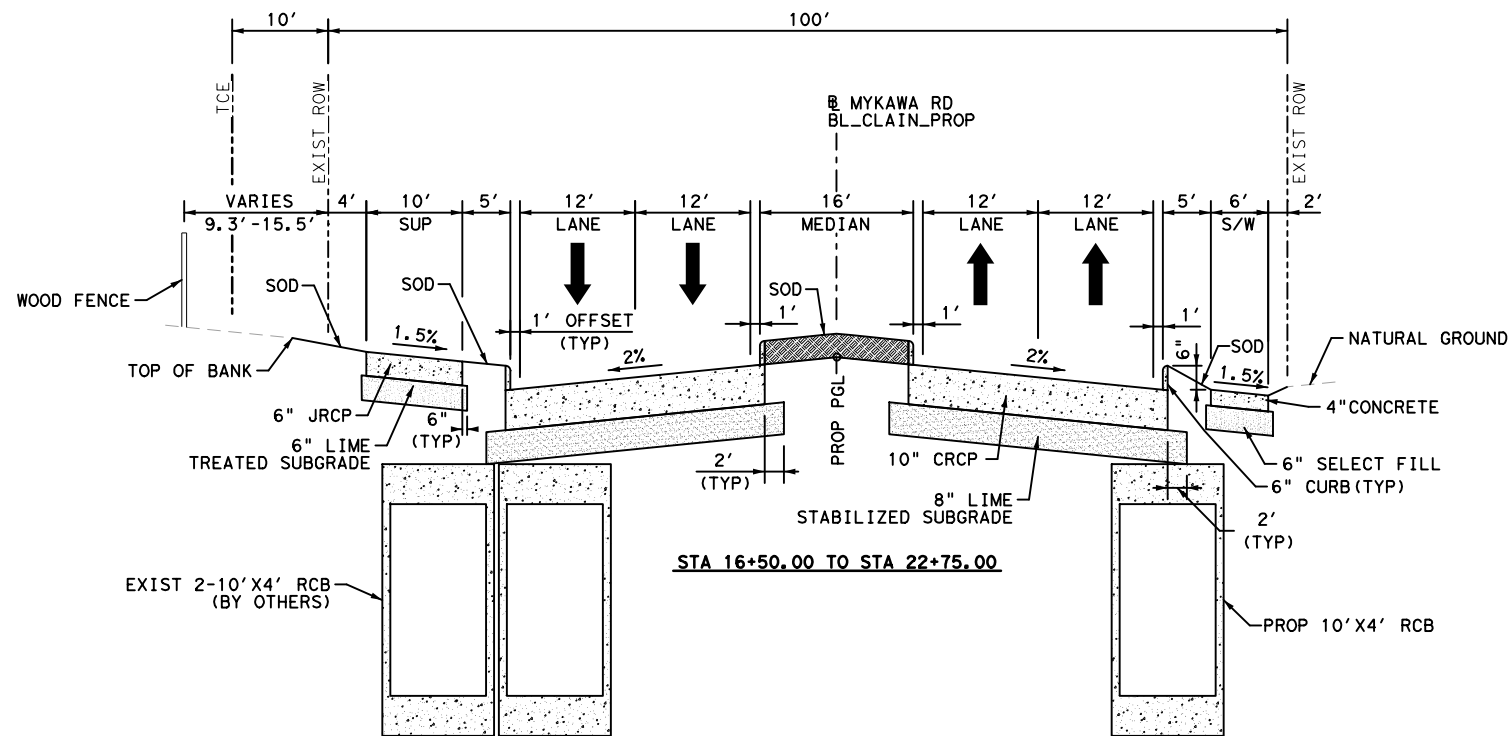
**60% INTERIM REVIEW ONLY**  
DOCUMENT INCOMPLETE: NOT INTENDED FOR PERMIT, BIDDING OR CONSTRUCTION

ENGINEER: XIANG LI  
P.E. SERIAL No.: 125130  
FIRM: LOCKWOOD, ANDREWS & NEWNAM, INC.  
FIRM No.: F-2614  
DATE: 6/3/2020

REV. NO.	DATE	DESCRIPTION	BY
<b>MYKAWA RD</b> <b>PROPOSED TYPICAL SECTIONS</b>			
SHEET 1 OF 8			
FED. RD. DIV. NO.	FEDERAL AID PROJECT NO.		HIGHWAY NO.
6	\$PROJ\$		MYKAWA
STATE	DISTRICT	COUNTY	SHEET NO.
TEXAS	HOUSTON	BRAZORIA/HARRIS	5
CONTROL	SECTION	JOB	
0912	31	319	

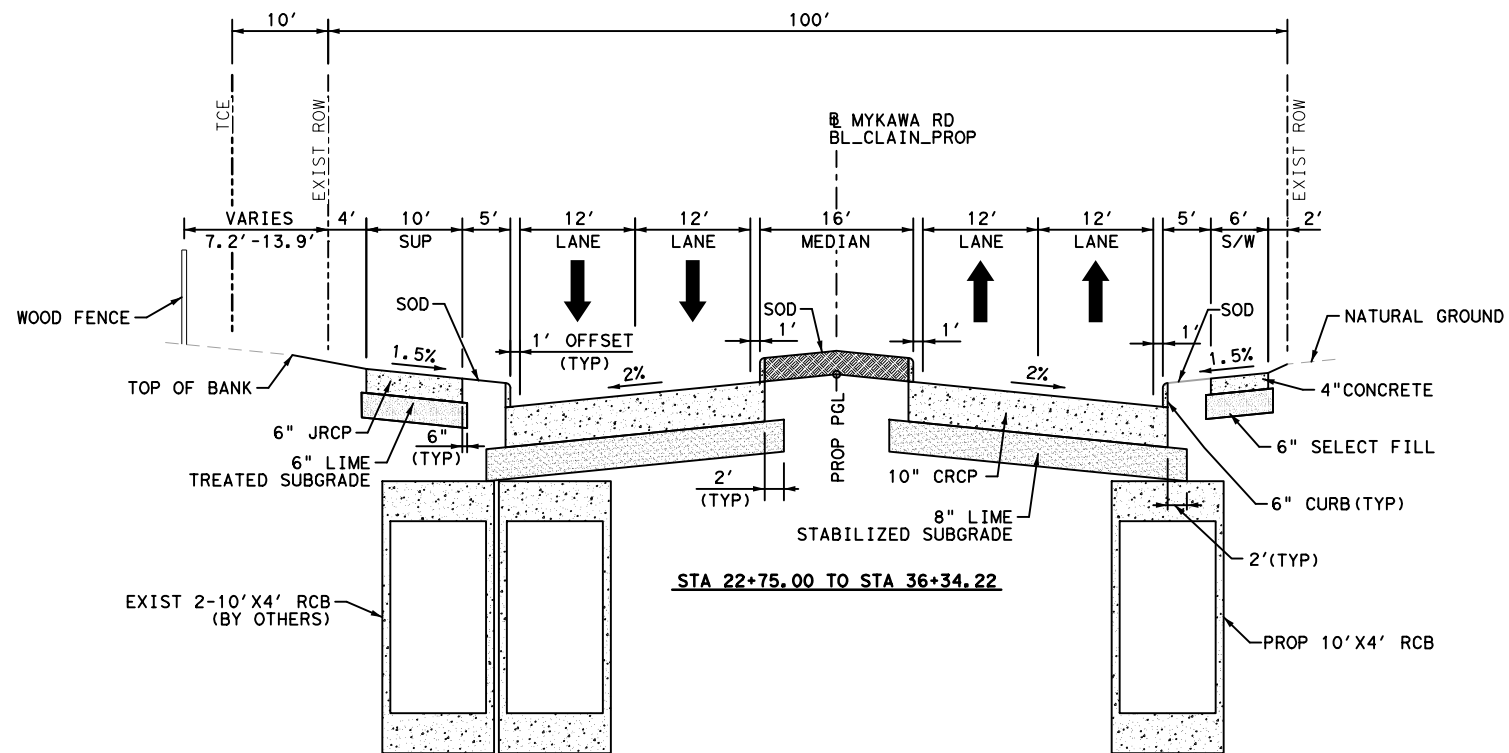
**LEGEND**

- ➔ DIRECTION OF TRAVEL
- ▣ PROP CONC PAVEMENT
- S/W SIDEWALK
- PGL PROF GRADE LINE
- ▨ SOD



**60% INTERIM REVIEW ONLY**  
DOCUMENT INCOMPLETE: NOT INTENDED FOR PERMIT, BIDDING OR CONSTRUCTION

ENGINEER: XIANG LI  
P.E. SERIAL No.: 125130  
FIRM: LOCKWOOD, ANDREWS & NEWMAN, INC.  
FIRM No.: F-2614  
DATE: 6/3/2020



REV. NO.	DATE	DESCRIPTION	BY

**LAN** Lockwood, Andrews & Newnam, Inc.  
A LEO A DALY COMPANY FIRM REGISTRATION NO. 2614

**PEARLAND** City of Pearland, Texas

**Texas Department of Transportation**  
© 2020

**MYKAWA RD**  
**PROPOSED TYPICAL SECTIONS**

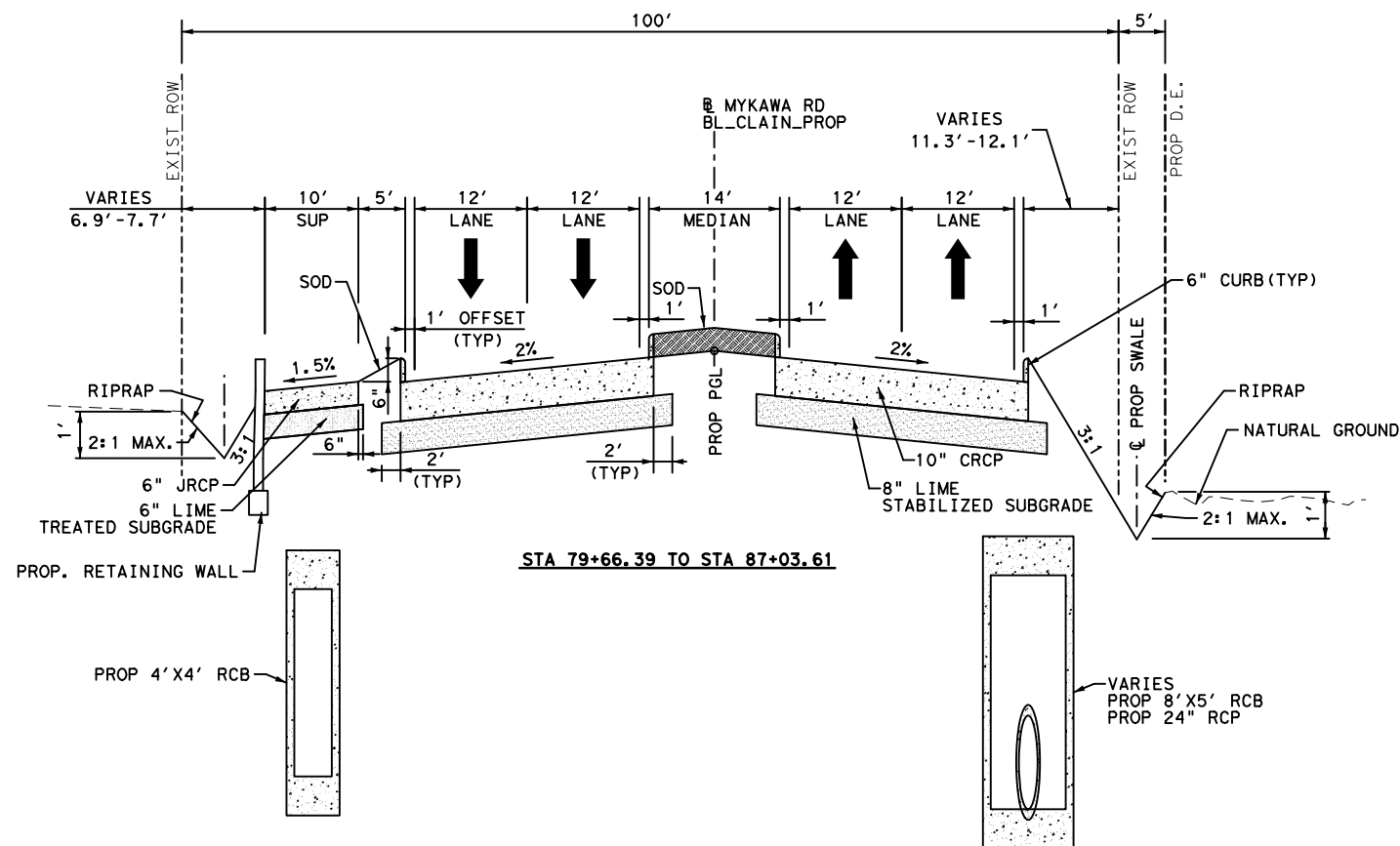
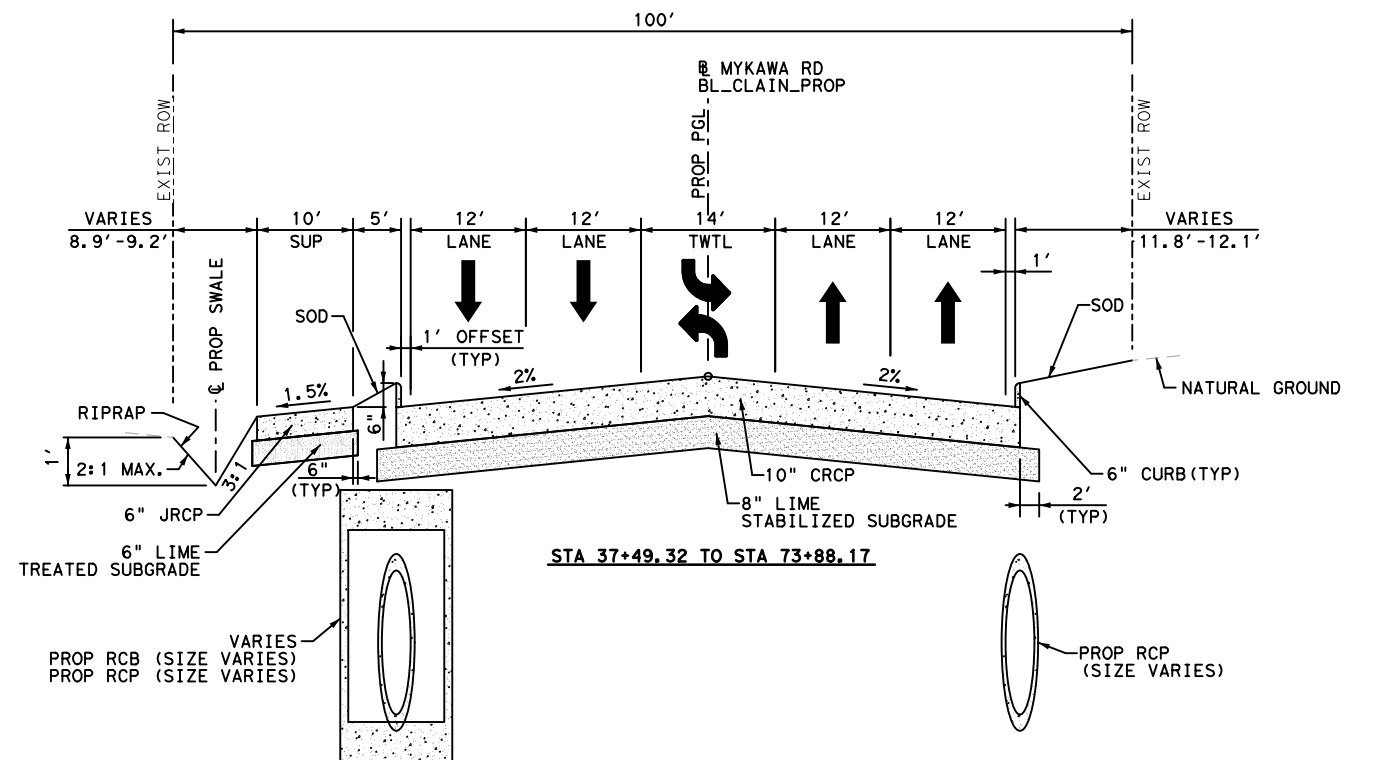
SHEET 2 OF 8

FED. RD. DIV. NO.	FEDERAL AID PROJECT NO.		HIGHWAY NO.
6	\$PROJ\$		MYKAWA
STATE	DISTRICT	COUNTY	SHEET NO.
TEXAS	HOUSTON	BRAZORIA/HARRIS	6
CONTROL	SECTION	JOB	
0912	31	319	

JWkoether  
 12:54:27 PM  
 6/3/2020  
 Plotted on:  
 Pen Table: MYKAWA.tbl  
 Plot Driver: c:\projectwise\jwkoether@lan-inc.com\d0740754\MYKAWA.pltcf

**LEGEND**

- ➔ DIRECTION OF TRAVEL
- ▭ PROP CONC PAVEMENT
- S/W SIDEWALK
- PGL PROF GRADE LINE
- ▨ SOD



**60% INTERIM REVIEW ONLY**  
 DOCUMENT INCOMPLETE: NOT INTENDED FOR PERMIT, BIDDING OR CONSTRUCTION

ENGINEER: XIANG LI  
 P.E. SERIAL No.: 125130  
 FIRM: LOCKWOOD, ANDREWS & NEWNAM, INC.  
 FIRM No.: F-2814  
 DATE: 6/3/2020

REV. NO.	DATE	DESCRIPTION	BY

**Lockwood, Andrews & Newnam, Inc.**  
 A LEO A DALY COMPANY FIRM REGISTRATION NO. 2814

**City of Pearland, Texas**

**Texas Department of Transportation**  
 © 2020

**MYKAWA RD**

**PROPOSED TYPICAL SECTIONS**

SHEET 3 OF 8

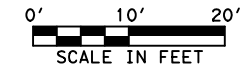
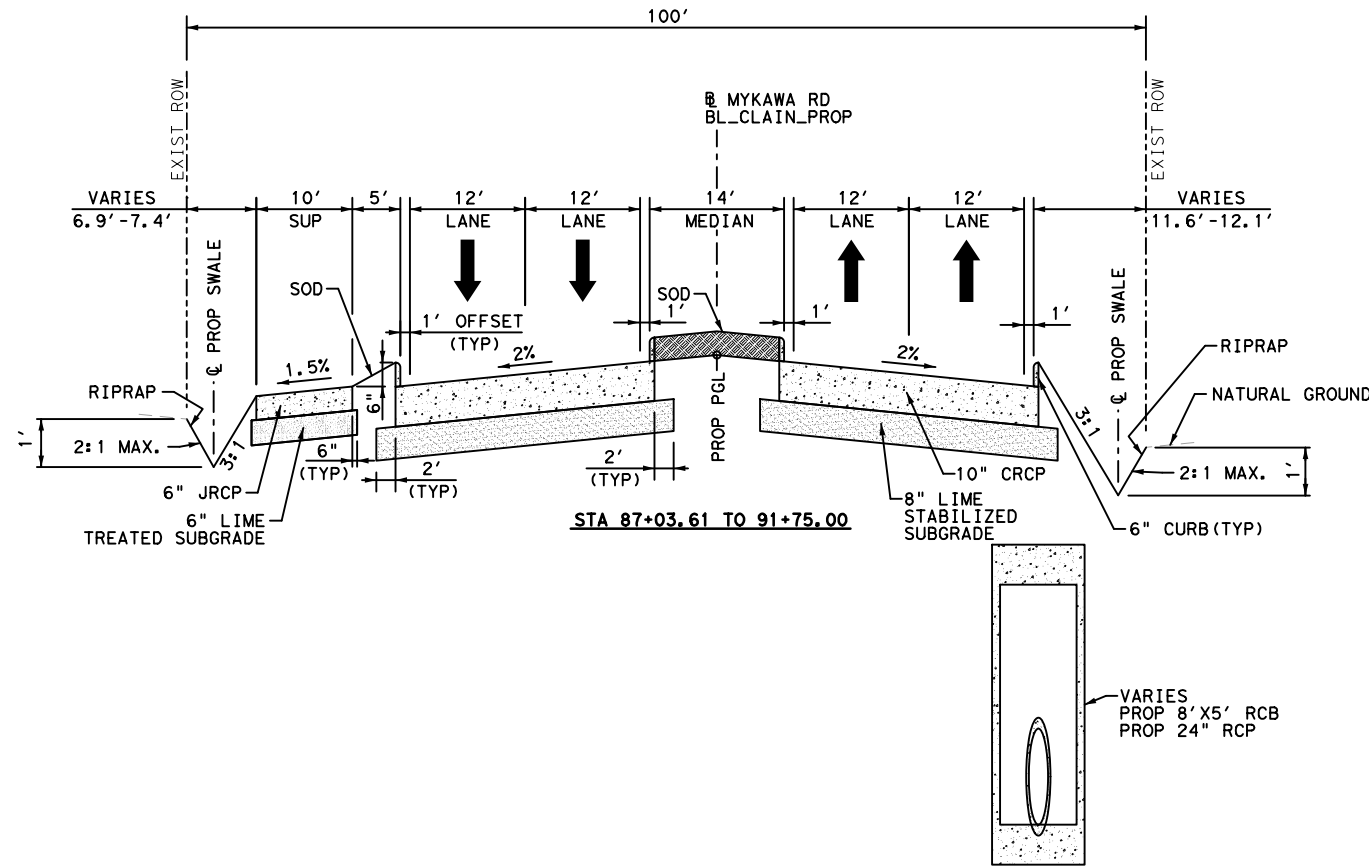
FED. RD. DIV. NO.	FEDERAL AID PROJECT NO.	HIGHWAY NO.
6	\$PROJ\$	MYKAWA
STATE	DISTRICT	COUNTY
TEXAS	HOUSTON	BRAZORIA/HARRIS
CONTROL	SECTION	JOB
0912	31	319

7

Design Filename: p:\lan-pw.bentley.com\lan-pw-01\Documents\Projects\140-11006-000\4-0-Production-Working\4-1-BIM-CAD\Roadway\Typ Sections\MR\_TYP\_03.dgn

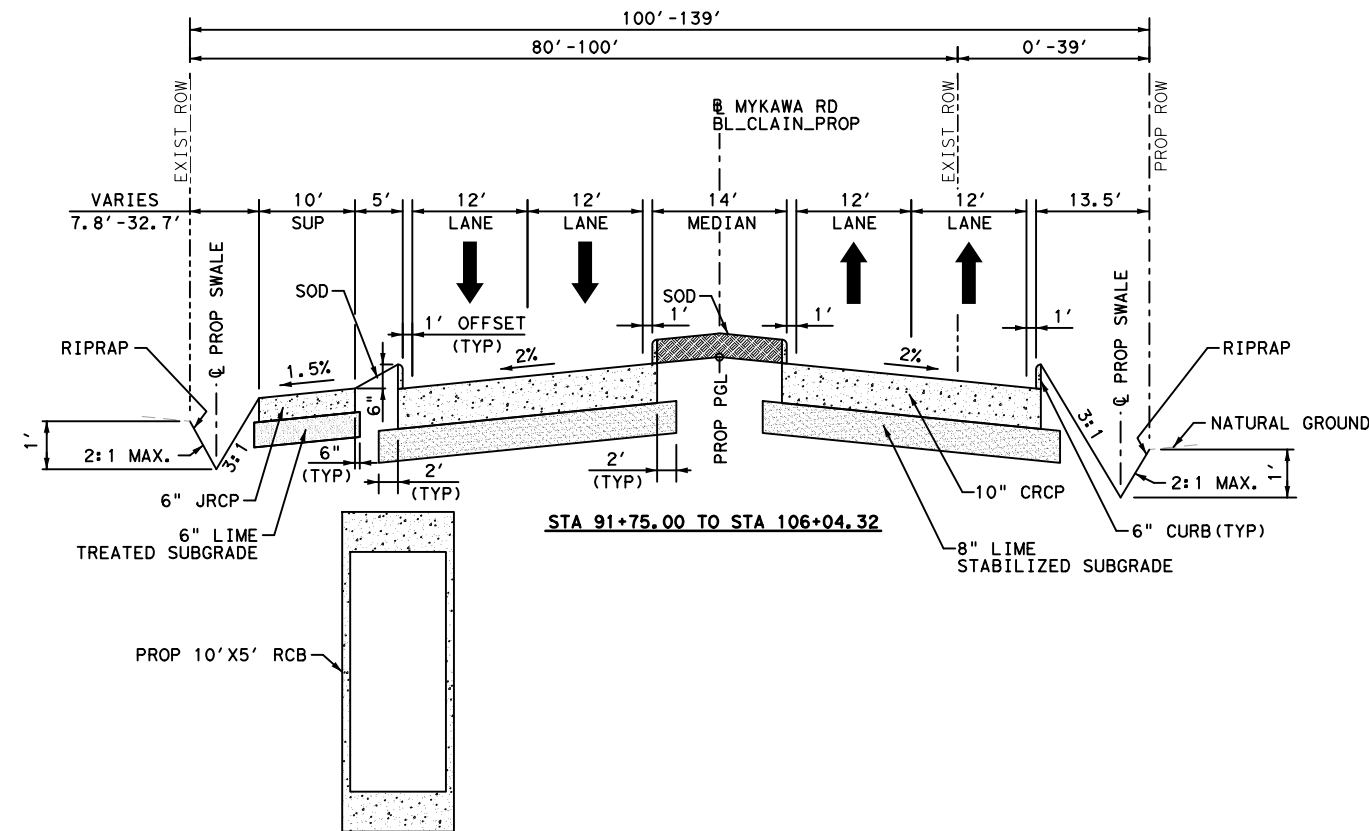
**LEGEND**

- ➔ DIRECTION OF TRAVEL
- ▭ PROP CONC PAVEMENT
- S/W SIDEWALK
- PGL PROF GRADE LINE
- ▨ SOD



**60% INTERIM REVIEW ONLY**  
 DOCUMENT INCOMPLETE: NOT INTENDED FOR PERMIT, BIDDING OR CONSTRUCTION

ENGINEER: XIANG LI  
 P.E. SERIAL No.: 125130  
 FIRM: LOCKWOOD, ANDREWS & NEWNAM, INC.  
 FIRM No.: F-2614  
 DATE: 6/3/2020

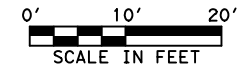
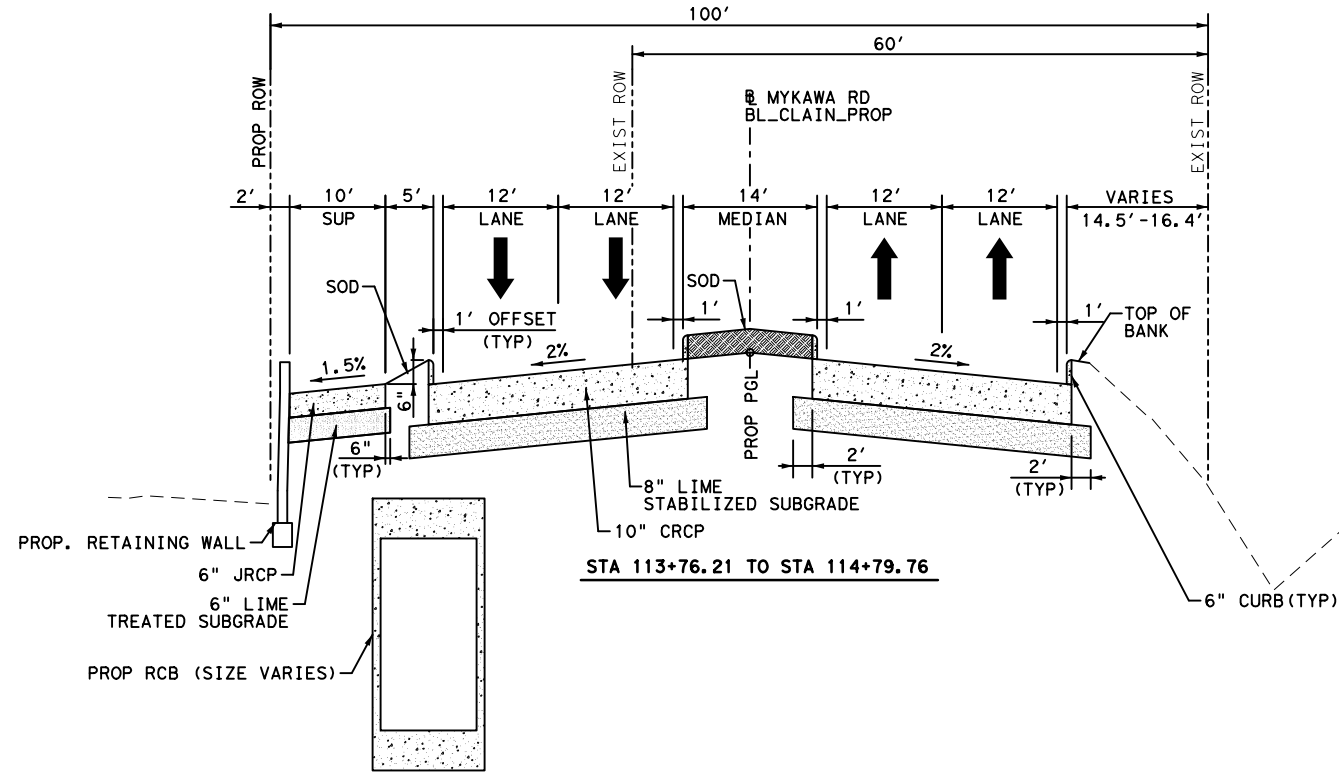
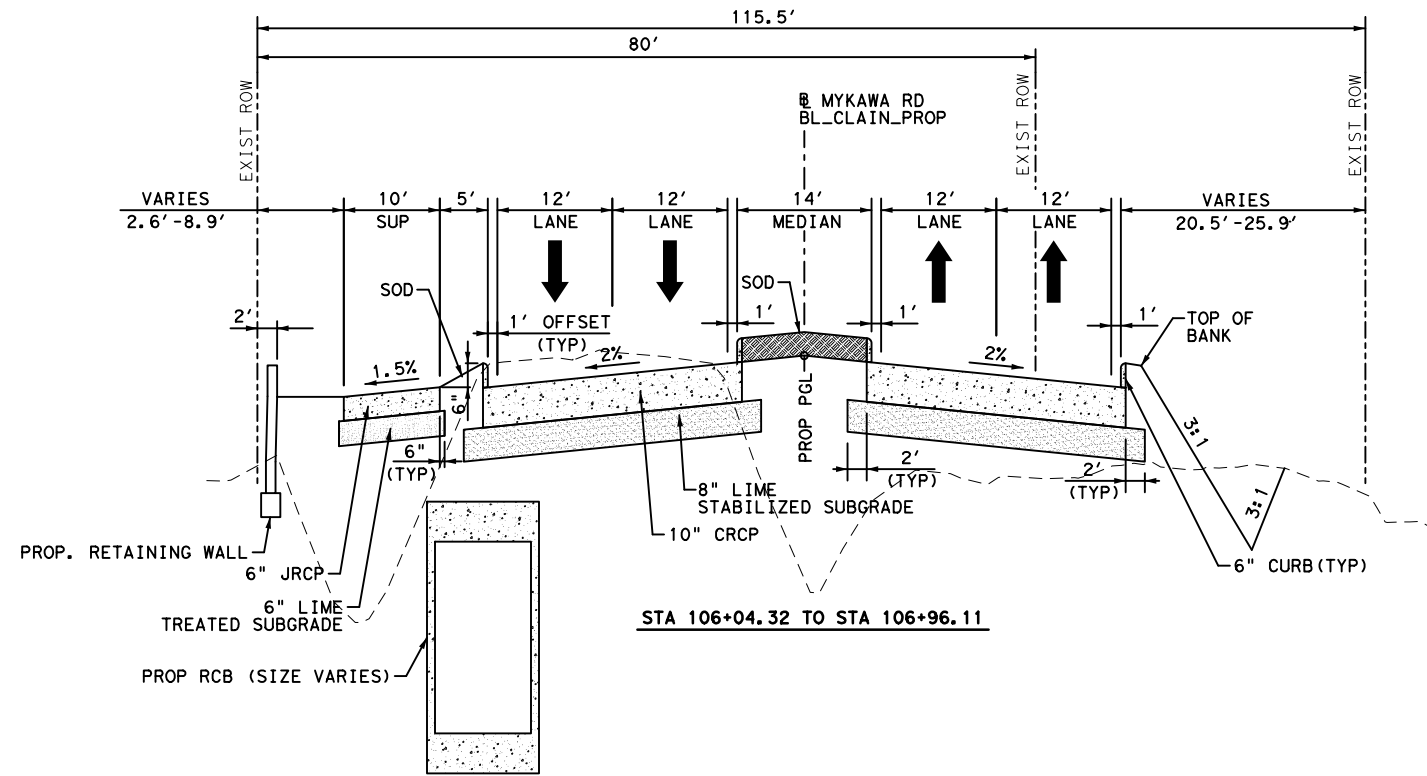


REV. NO.	DATE	DESCRIPTION	BY
<b>MYKAWA RD</b> <b>PROPOSED TYPICAL SECTIONS</b>			
SHEET 4 OF 8			
FED. RD. DIV. NO.	FEDERAL AID PROJECT NO.		HIGHWAY NO.
6	\$PROJ\$		MYKAWA
STATE	DISTRICT	COUNTY	SHEET NO.
TEXAS	HOUSTON	BRAZORIA/HARRIS	8
CONTROL	SECTION	JOB	
0912	31	319	



**LEGEND**

- ➔ DIRECTION OF TRAVEL
- ▭ PROP CONC PAVEMENT
- S/W SIDEWALK
- PGL PROF GRADE LINE
- ▨ SOD



**60% INTERIM REVIEW ONLY**  
 DOCUMENT INCOMPLETE: NOT INTENDED FOR PERMIT, BIDDING OR CONSTRUCTION

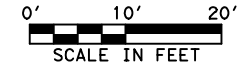
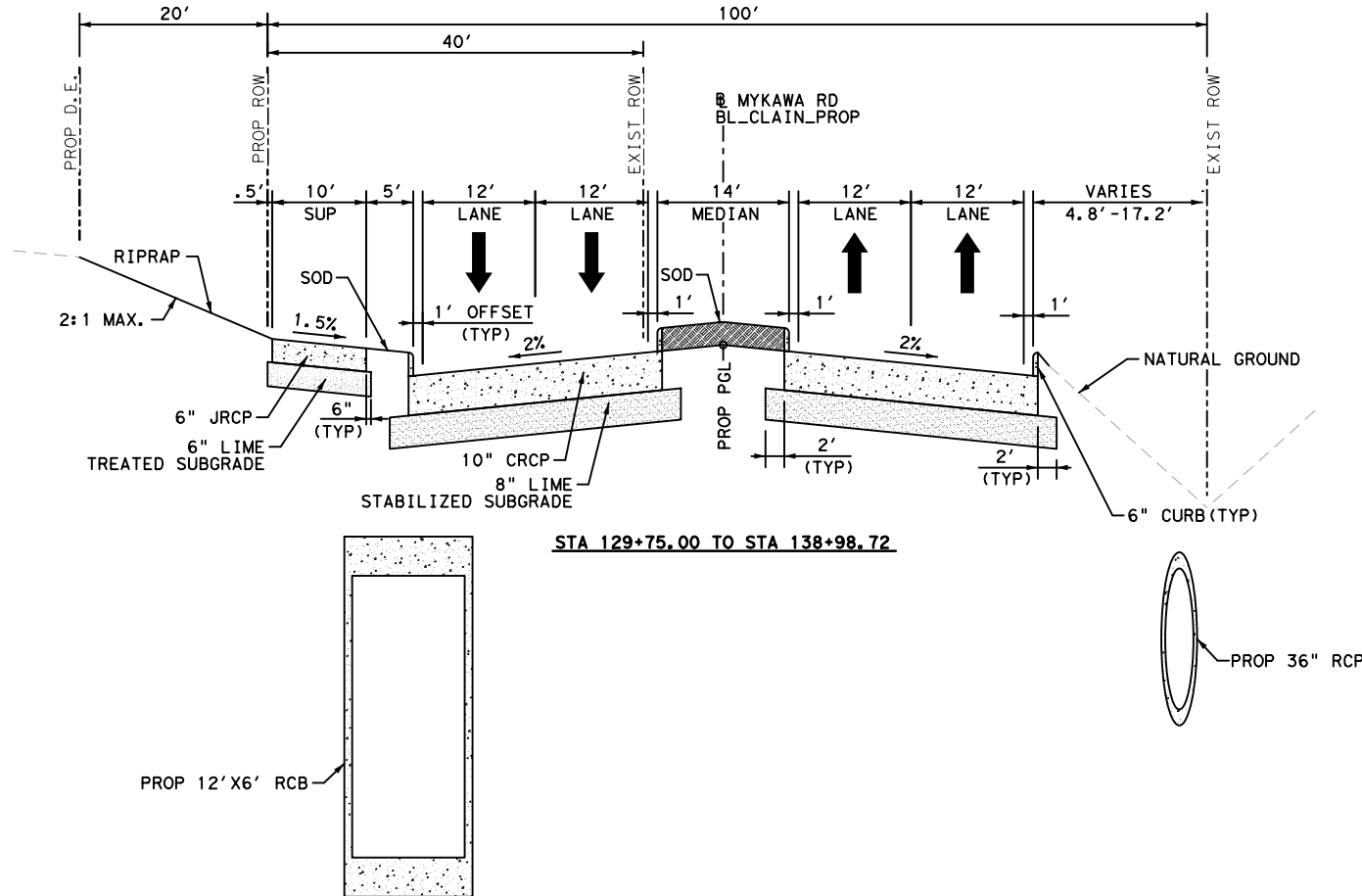
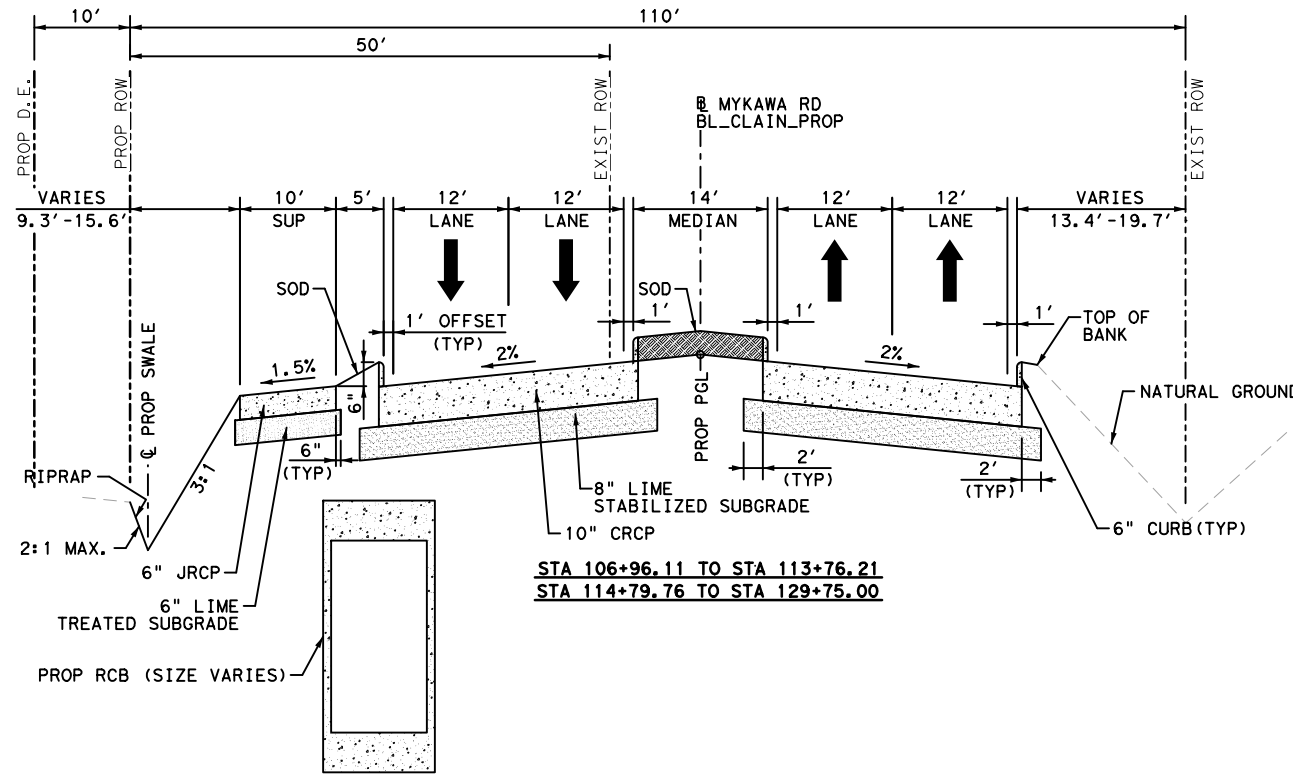
ENGINEER: XIANG LI  
 P.E. SERIAL No.: 125130  
 FIRM: LOCKWOOD, ANDREWS & NEWNAM, INC.  
 FIRM No.: F-2614  
 DATE: 6/3/2020

REV. NO.	DATE	DESCRIPTION	BY
<b>MYKAWA RD</b> <b>PROPOSED TYPICAL SECTIONS</b>			
SHEET 5 OF 8			
FED. RD. DIV. NO.	FEDERAL AID PROJECT NO.		HIGHWAY NO.
6	\$PROJ\$		MYKAWA
STATE	DISTRICT	COUNTY	SHEET NO.
TEXAS	HOUSTON	BRAZORIA/HARRIS	9
CONTROL	SECTION	JOB	
0912	31	319	

Design Filename: p:\lan-pw.bentley.com\lan-pw-01\Documents\Projects\140-11006-000\4-0-Production-Working\4-1-BIM-CAD\Roadway\Typ Sections\MR\_TYP\_07.dgn

**LEGEND**

- ➔ DIRECTION OF TRAVEL
- ▭ PROP CONC PAVEMENT
- S/W SIDEWALK
- PGL PROF GRADE LINE
- ▨ SOD



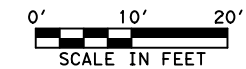
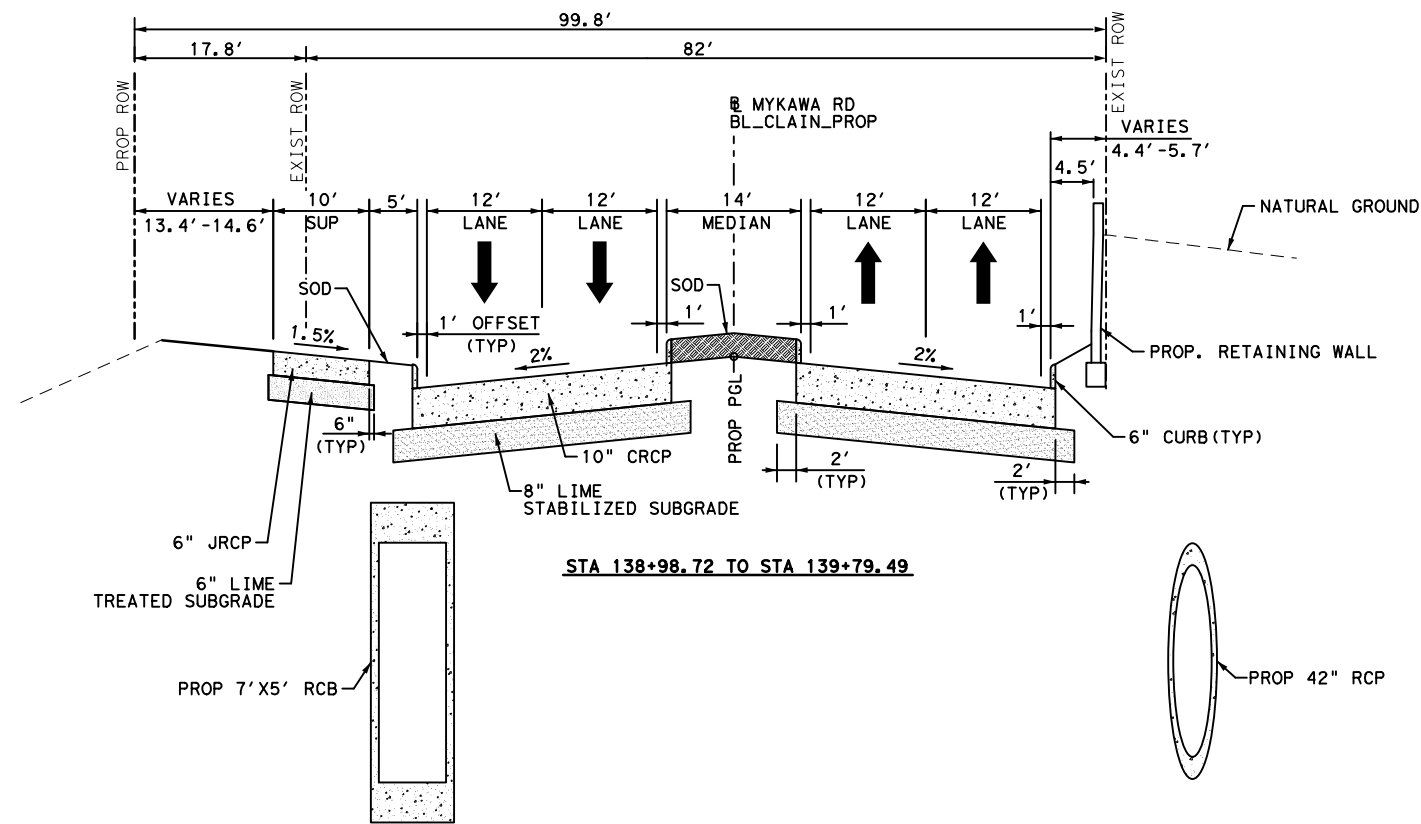
**60% INTERIM REVIEW ONLY**  
DOCUMENT INCOMPLETE: NOT INTENDED FOR PERMIT, BIDDING OR CONSTRUCTION

ENGINEER: XIANG LI  
P.E. SERIAL No.: 125130  
FIRM: LOCKWOOD, ANDREWS & NEWNAM, INC.  
FIRM No.: F-2614  
DATE: 6/3/2020

REV. NO.	DATE	DESCRIPTION	BY
<b>MYKAWA RD</b> <b>PROPOSED TYPICAL SECTIONS</b>			
SHEET 6 OF 8			
FED. RD. DIV. NO.	FEDERAL AID PROJECT NO.		HIGHWAY NO.
6	\$PROJ\$		MYKAWA
STATE	DISTRICT	COUNTY	SHEET NO.
TEXAS	HOUSTON	BRAZORIA/HARRIS	10
CONTROL	SECTION	JOB	
0912	31	319	

**LEGEND**

- ➔ DIRECTION OF TRAVEL
- ▭ PROP CONC PAVEMENT
- S/W SIDEWALK
- PGL PROF GRADE LINE
- ▨ SOD



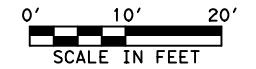
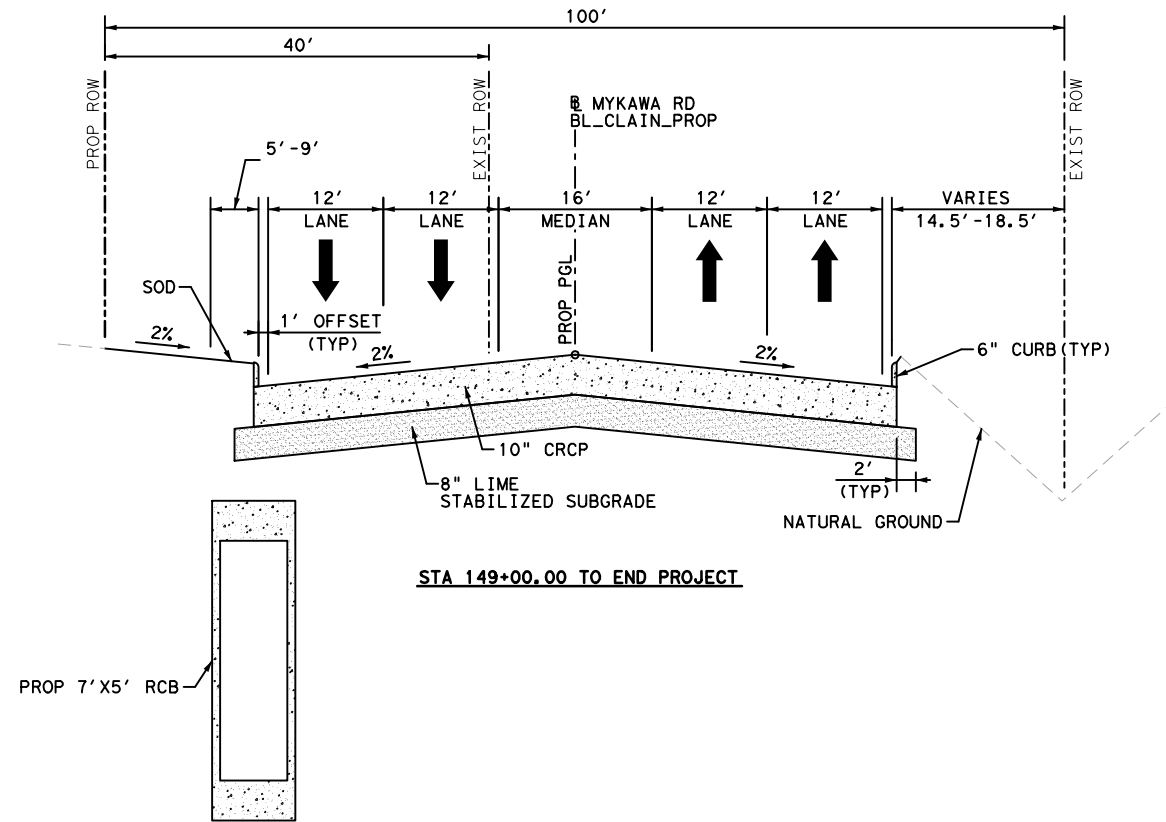
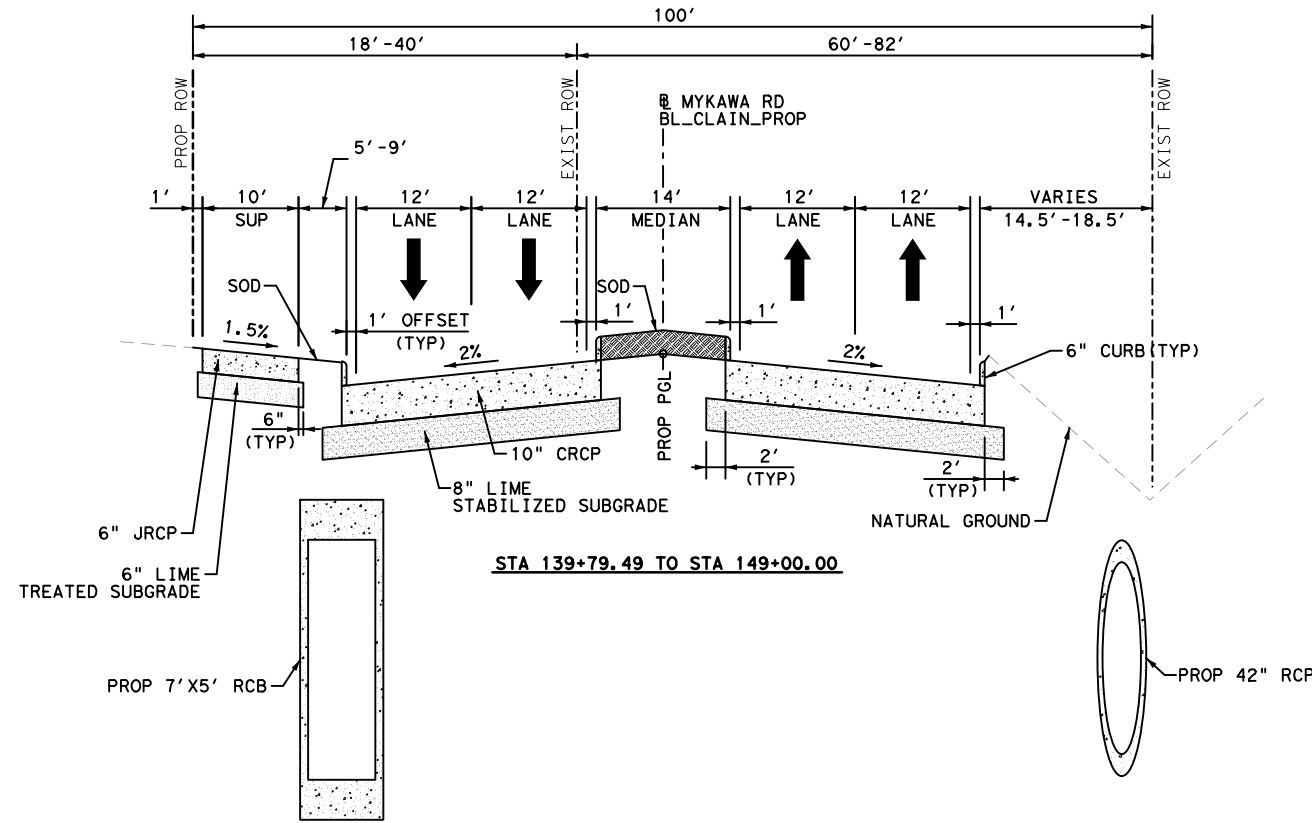
**60% INTERIM REVIEW ONLY**  
DOCUMENT INCOMPLETE: NOT INTENDED FOR PERMIT, BIDDING OR CONSTRUCTION

ENGINEER: XIANG LI  
P.E. SERIAL No.: 125130  
FIRM: LOCKWOOD, ANDREWS & NEWNAM, INC.  
FIRM No.: F-2614  
DATE: 6/3/2020

REV. NO.	DATE	DESCRIPTION	BY
<p><b>Lockwood, Andrews &amp; Newnam, Inc.</b> A LEO A DALY COMPANY FIRM REGISTRATION NO. 2614</p>			
<p>City of Pearland, Texas</p>			
<p>Texas Department of Transportation © 2020</p>			
<p><b>MYKAWA RD</b></p> <p><b>PROPOSED TYPICAL SECTIONS</b></p>			
<p>SHEET 7 OF 8</p>			
FED. RD. DIV. NO.	FEDERAL AID PROJECT NO.		HIGHWAY NO.
6	\$PROJ\$		MYKAWA
STATE	DISTRICT	COUNTY	SHEET NO.
TEXAS	HOUSTON	BRAZORIA/HARRIS	
CONTROL	SECTION	JOB	
0912	31	319	11

**LEGEND**

- ➔ DIRECTION OF TRAVEL
- ▭ PROP CONC PAVEMENT
- S/W SIDEWALK
- PGL PROF GRADE LINE
- ▨ SOD



**60% INTERIM REVIEW ONLY**  
 DOCUMENT INCOMPLETE: NOT INTENDED FOR PERMIT, BIDDING OR CONSTRUCTION

ENGINEER: XIANG LI  
 P.E. SERIAL No.: 125130  
 FIRM: LOCKWOOD, ANDREWS & NEWNAM, INC.  
 FIRM No.: F-2814  
 DATE: 6/3/2020

REV. NO.	DATE	DESCRIPTION	BY
<p>Lockwood, Andrews &amp; Newnam, Inc. A LEO A DALY COMPANY FIRM REGISTRATION NO. 2814</p>			
<p>City of Pearland, Texas</p>			
<p>Texas Department of Transportation © 2020</p>			
<p>MYKAWA RD</p> <p>PROPOSED TYPICAL SECTIONS</p>			
SHEET 8 OF 8			
FED. RD. DIV. NO.	FEDERAL AID PROJECT NO.		HIGHWAY NO.
6	\$PROJ\$		MYKAWA
STATE	DISTRICT	COUNTY	SHEET NO.
TEXAS	HOUSTON	BRAZORIA/HARRIS	12
CONTROL	SECTION	JOB	
0912	31	319	

ATTACHMENT 3  
STIP and RTP Pages



Logged in as Susanna Scott [Log Out](#)

[Project Management](#) | [Reports](#) | [Support](#)

Project Management > [Area List](#) > [STIPs \(M-HOUSTON-GALVESTON\)](#) > [Revisions \(2021-2024\)](#) > [TIP Instances \(07/2020\)](#) > [Highway Projects \(07/2020\)](#) > Project Details

Color Key:  - Business rule violation  - Value changed in current session  - Different from DCIS or latest approved copy [Data](#)

Statewide  TIP Revision  Phase  Construction  
 Engineering  
 Environmental  
 Engineering  
 Right-of-Way  
 Acquisition  
 Utilities  
 Transfer

District  County   
 MPO  Highway   
 CSJ  -  -  TIP FY

**Total Project Cost Information**

Prelim Engineering	\$1,044,000
ROW Purchase	\$1,858,000
Construction Cost	\$40,033,000
Const Engineering	\$0
Contingencies	\$0
Indirect Costs	\$0
Bond Financing	\$0
Potential Chg Ord	\$0
<b>Total Project Cost</b>	<b>\$42,935,000</b>

Revision Date  NOX (Kg /D):   
 Project Sponsor  VOC (Kg /D):   
 MPO Proj Number  PM10 (Kg /D):   
 MTP Reference  PM2.5 (Kg /D):   
 City  CO (Lbs /D):

Limits From   
 Limits To

Project Description

P7 Remarks

Project History

Authorized Funding by Category/Share

Category	Federal	State	Regional	Local	Local Contributions	Total
7	\$31,167,164	\$0	\$0	\$7,791,791	\$0	\$38,958,955
<b>Total</b>	<b>\$31,167,164</b>	<b>\$0.00</b>	<b>\$0.00</b>	<b>\$7,791,791</b>	<b>\$0.00</b>	<b>\$38,958,955</b>

2021-2024 STIP		07/2020 (Current) Revision: Under Revision							
DISTRICT	MPO	COUNTY	CSJ	TIP FY	HWY	PHASE	CITY	YOE COST	
HOUSTON	HOUSTON-GALVESTON	BRAZORIA	0912-31-319	2021	CS	C,R	PEARLAND	\$ 38,958,955	
LIMITS FROM: HARRIS C/L				PROJECT SPONSOR: CITY OF PEARLAND					
LIMITS TO: FM 518				REVISION DATE: 07/2020					
PROJECT WIDEN FROM 2 TO 4 LANES DIVIDED				MPO PROJ NUM: 17082					
DESCR:				FUNDING CAT(S): 7					
REMARKS P7: MYKAWA RD				PROJECT APPROVED # 1- 06/26/2020- Program carryover project in HISTORY: 2021-2024 TIP in FY 2021 with STBG funding.					
TOTAL PROJECT COST INFORMATION			AUTHORIZED FUNDING BY CATEGORY/SHARE						
PRELIM ENG: \$	1,044,000	COST OF APPROVED PHASES	CATEGORY	FEDERAL	STATE	REGIONAL	LOCAL	LC	TOTAL
ROW PURCH: \$	1,858,000		7	\$ 31,167,164	\$ 0	\$ 0	\$ 7,791,791	\$ 0	\$ 38,958,955
CONST COST: \$	40,033,000		TOTAL	\$ 31,167,164	\$ 0	\$ 0	\$ 7,791,791	\$ 0	\$ 38,958,955
CONST ENG: \$	0								
CONTING: \$	0	\$ 38,958,955							
INDIRECT: \$	0								
BOND FIN: \$	0								
POT CHG ORD: \$	0								
TOTAL COST: \$	42,935,000								

TIP History

2019-2022 STIP									07/2018 Revision: Not Approved 09/28/2018			
DISTRICT	MPO	COUNTY	CSJ	TIP FY	HWY	PHASE	CITY	YOE COST				
HOUSTON	HOUSTON-GALVESTON	BRAZORIA	0912-00-543	2020	CS	R	PEARLAND	\$ 1,858,000	PROJECT SPONSOR: CITY OF PEARLAND			
LIMITS FROM: BW 8									REVISION DATE: 07/2018			
LIMITS TO: FM 518									MPO PROJ NUM: 17082			
PROJECT ROW ACQUISITION FOR WIDENING TO 4-LANE BLVD SECTION									FUNDING CAT(S): 7			
DESCR:									PROJECT Amendment #MAY-2018 - 5/25/18 - Program projects in the			
REMARKS P7: Facility: MYKAWA RD									HISTORY: 2019-2022 TIP.			
TOTAL PROJECT COST INFORMATION				AUTHORIZED FUNDING BY CATEGORY/SHARE								
PRELIM ENG: \$	1,044,000	COST OF APPROVED PHASES \$ 1,858,000	CATEGORY	FEDERAL	STATE	REGIONAL	LOCAL	LC	TOTAL			
ROW PURCH: \$	1,858,000		7	\$ 1,486,400	\$ 0	\$ 0	\$ 371,600	\$ 0	\$ 1,858,000			
CONST COST: \$	40,033,000		TOTAL	\$ 1,486,400	\$ 0	\$ 0	\$ 371,600	\$ 0	\$ 1,858,000			
CONST ENG: \$	0											
CONTING: \$	0											
INDIRECT: \$	0											
BOND FIN: \$	0											
POT CHG ORD: \$	0											
TOTAL COST: \$	42,935,000											

2017-2020 STIP									07/2016 Revision: Administrative 04/16/2018			
DISTRICT	MPO	COUNTY	CSJ	TIP FY	HWY	PHASE	CITY	YOE COST				
HOUSTON	HOUSTON-GALVESTON	BRAZORIA	0000-00-000	2020	CS	R	PEARLAND	\$ 1,858,000	PROJECT SPONSOR: CITY OF PEARLAND			
LIMITS FROM: BW 8									REVISION DATE: 07/2016			
LIMITS TO: FM 518									MPO PROJ NUM: 17082			
PROJECT ROW ACQUISITION FOR WIDENING TO 4-LANE BLVD SECTION									FUNDING CAT(S): 7			
DESCR:									PROJECT Amendment #DEC-2017A - 12/15/17 - Delay to FY2020.			
REMARKS P7: Facility: MYKAWA RD									HISTORY:			
TOTAL PROJECT COST INFORMATION				AUTHORIZED FUNDING BY CATEGORY/SHARE								
PRELIM ENG: \$	1,044,000	COST OF APPROVED PHASES \$ 1,858,000	CATEGORY	FEDERAL	STATE	REGIONAL	LOCAL	LC	TOTAL			
ROW PURCH: \$	1,858,000		7	\$ 1,486,400	\$ 0	\$ 0	\$ 371,600	\$ 0	\$ 1,858,000			
CONST COST: \$	40,033,000		TOTAL	\$ 1,486,400	\$ 0	\$ 0	\$ 371,600	\$ 0	\$ 1,858,000			
CONST ENG: \$	0											
CONTING: \$	0											
INDIRECT: \$	0											
BOND FIN: \$	0											
POT CHG ORD: \$	0											
TOTAL COST: \$	42,935,000											

2017-2020 STIP									07/2016 Revision: Approved 12/19/2016			
DISTRICT	MPO	COUNTY	CSJ	TIP FY	HWY	PHASE	CITY	YOE COST				
HOUSTON	HOUSTON-GALVESTON	BRAZORIA	0000-00-000	2019	CS	R	PEARLAND	\$ 1,858,000	PROJECT SPONSOR: CITY OF PEARLAND			
LIMITS FROM: BW 8									REVISION DATE: 07/2016			
LIMITS TO: FM 518									MPO PROJ NUM: 17082			
PROJECT ROW ACQUISITION FOR WIDENING TO 4-LANE BLVD SECTION									FUNDING CAT(S): 7			
DESCR:									PROJECT HISTORY:			
REMARKS P7: Facility: MYKAWA RD												
TOTAL PROJECT COST INFORMATION				AUTHORIZED FUNDING BY CATEGORY/SHARE								
PRELIM ENG: \$	1,044,000	COST OF APPROVED PHASES \$ 1,858,000	CATEGORY	FEDERAL	STATE	REGIONAL	LOCAL	LC	TOTAL			
ROW PURCH: \$	1,858,000		7	\$ 1,486,400	\$ 0	\$ 0	\$ 371,600	\$ 0	\$ 1,858,000			
CONST COST: \$	40,033,000		TOTAL	\$ 1,486,400	\$ 0	\$ 0	\$ 371,600	\$ 0	\$ 1,858,000			
CONST ENG: \$	0											
CONTING: \$	0											
INDIRECT: \$	0											
BOND FIN: \$	0											
POT CHG ORD: \$	0											
TOTAL COST: \$	42,935,000											

Comment History

Time	User	Comment	Related Approval
2018/09/27 16:31:30	Jose Campos	Not approved. H-GAC 2040 RTP project description indicates widening to 4-lane divided. However, e-STIP project description indicates widening to a 4-lane boulevard section. Approval is withheld pending clarification of project scope and consistency with H-GAC 2040 RTP.	07/2018: Not Approved
2016/10/26 13:00:04	Jose Campos		07/2016: Approved



Logged in as Susanna Scott [Log Out](#)

[Project Management](#) | [Reports](#) | [Support](#)

Project Management > [Area List](#) > [STIPs \(M-HOUSTON-GALVESTON\)](#) > [Revisions \(2021-2024\)](#) > [TIP Instances \(07/2020\)](#) > [Highway Projects \(07/2020\)](#) > Project Details

Color Key:  - Business rule violation  - Value changed in current session  - Different from DCIS or latest approved copy [Data](#)

Statewide  TIP Revision  Phase  Construction  
 Engineering  
 Environmental  
 Engineering  
 Right-of-Way  
 Acquisition  
 Utilities  
 Transfer

District  County   
 MPO  Highway   
 CSJ  -  -  TIP FY

**Total Project Cost Information**

Prelim Engineering	\$52,628
ROW Purchase	\$1,858,000
Construction Cost	\$1,074,045
Const Engineering	\$64,443
Contingencies	\$107,405
Indirect Costs	\$54,561
Bond Financing	\$0
Potential Chg Ord	\$0
<b>Total Project Cost</b>	<b>\$3,211,082</b>

Revision Date  NOX (Kg /D):   
 Project Sponsor  VOC (Kg /D):   
 MPO Proj Number  PM10 (Kg /D):   
 MTP Reference  PM2.5 (Kg /D):   
 City  CO (Lbs /D):

Limits From   
 Limits To

Project Description

P7 Remarks

Project History

Authorized Funding by Category/Share

Category	Federal	State	Regional	Local	Local Contributions	Total
7	\$2,345,636	\$0	\$0	\$586,409	\$0	\$2,932,045
<b>Total</b>	<b>\$2,345,636</b>	<b>\$0.00</b>	<b>\$0.00</b>	<b>\$586,409</b>	<b>\$0.00</b>	<b>\$2,932,045</b>

2021-2024 STIP		07/2020 (Current) Revision: Under Revision							
DISTRICT	MPO	COUNTY	CSJ	TIP FY	HWY	PHASE	CITY	YOE COST	
HOUSTON	HOUSTON-GALVESTON	HARRIS	0912-72-564	2021	CS	C,R	PEARLAND	\$ 2,932,045	
LIMITS FROM:		SL 8		PROJECT SPONSOR: CITY OF PEARLAND					
LIMITS TO:		BRAZORIA C/L		REVISION DATE: 07/2020					
PROJECT DESCR:		WIDEN FROM 2 TO 4 LANES DIVIDED		MPO PROJ NUM: 7602					
REMARKS P7:		MYKAWA RD		FUNDING CAT(S): 7					
PROJECT HISTORY:		PROJECT APPROVED # 1- 06/26/2020- Program carryover projects in the HISTORY: 2021-2024 TIP in FY 2021 with STBG funding.							
TOTAL PROJECT COST INFORMATION			AUTHORIZED FUNDING BY CATEGORY/SHARE						
PRELIM ENG:	\$ 52,628	COST OF APPROVED PHASES	CATEGORY	FEDERAL	STATE	REGIONAL	LOCAL	LC	TOTAL
ROW PURCH:	\$ 1,858,000		7	\$ 2,345,636	\$ 0	\$ 0	\$ 586,409	\$ 0	\$ 2,932,045
CONST COST:	\$ 1,074,045		TOTAL	\$ 2,345,636	\$ 0	\$ 0	\$ 586,409	\$ 0	\$ 2,932,045
CONST ENG:	\$ 64,443								
CONTING:	\$ 107,405								
INDIRECT:	\$ 54,561								
BOND FIN:	\$ 0								
POT CHG ORD:	\$ 0								
TOTAL COST:	\$ 3,211,082								

TIP History



2019-2022 STIP		07/2018 Revision: Administrative 01/30/2020							
DISTRICT	MPO	COUNTY	CSJ	TIP FY	HWY	PHASE	CITY	YOE COST	
HOUSTON	HOUSTON-GALVESTON	HARRIS	0912-72-564	2021	CS	C,R	PEARLAND	\$ 2,932,045	
LIMITS FROM: SL 8		PROJECT SPONSOR: CITY OF PEARLAND							
LIMITS TO: BRAZORIA C/L		REVISION DATE: 07/2018							
PROJECT WIDEN FROM 2 TO 4 LANES DIVIDED		MPO PROJ NUM: 7602							
DESCR:		FUNDING CAT(S): 7							
REMARKS P7: Facility: MYKAWA RD		PROJECT HISTORY: Amendment #JAN-2020A - 1/24/20 - Modify MPO IDs 7602/17082 to combine C and R phases and distinguish Harris and Brazoria County segments with new CSJ numbers. There is no overall change to scope, phases, limits or funding. *** Amendment #MAR-2019A - 3/22/							
TOTAL PROJECT COST INFORMATION			AUTHORIZED FUNDING BY CATEGORY/SHARE						
PRELIM ENG: \$	52,628	COST OF APPROVED PHASES \$ 2,932,045	CATEGORY	FEDERAL	STATE	REGIONAL	LOCAL	LC	TOTAL
ROW PURCH: \$	1,858,000		7	\$ 2,345,636	\$ 0	\$ 0	\$ 586,409	\$ 0	\$ 2,932,045
CONST COST: \$	1,074,045		TOTAL	\$ 2,345,636	\$ 0	\$ 0	\$ 586,409	\$ 0	\$ 2,932,045
CONST ENG: \$	64,443								
CONTING: \$	107,405								
INDIRECT: \$	54,561								
BOND FIN: \$	0								
POT CHG ORD: \$	0								
TOTAL COST: \$	3,211,082								
2019-2022 STIP		07/2018 Revision: Administrative 04/30/2019							
DISTRICT	MPO	COUNTY	CSJ	TIP FY	HWY	PHASE	CITY	YOE COST	
HOUSTON	HOUSTON-GALVESTON		0912-00-543	2021	CS	C	PEARLAND	\$ 40,033,000	
LIMITS FROM: SL 8		PROJECT SPONSOR: CITY OF PEARLAND							
LIMITS TO: FM 518		REVISION DATE: 07/2018							
PROJECT WIDEN FROM 2 TO 4 LANES DIVIDED		MPO PROJ NUM: 7602							
DESCR:		FUNDING CAT(S): 7							
REMARKS P7: Facility: MYKAWA RD		PROJECT HISTORY: Amendment #MAR-2019A - 3/22/19 - Delay to August 2021 at sponsor request. PS&E start was delayed by one year due to TXDOT review of engineering proposal.							
TOTAL PROJECT COST INFORMATION			AUTHORIZED FUNDING BY CATEGORY/SHARE						
PRELIM ENG: \$	1,961,617	COST OF APPROVED PHASES \$ 40,033,000	CATEGORY	FEDERAL	STATE	REGIONAL	LOCAL	LC	TOTAL
ROW PURCH: \$	1,858,000		7	\$ 32,026,400	\$ 0	\$ 0	\$ 8,006,600	\$ 0	\$ 40,033,000
CONST COST: \$	40,033,000		TOTAL	\$ 32,026,400	\$ 0	\$ 0	\$ 8,006,600	\$ 0	\$ 40,033,000
CONST ENG: \$	1,601,320								
CONTING: \$	4,003,300								
INDIRECT: \$	2,033,676								
BOND FIN: \$	0								
POT CHG ORD: \$	0								
TOTAL COST: \$	51,490,913								
2019-2022 STIP		07/2018 Revision: Administrative 04/30/2019							
DISTRICT	MPO	COUNTY	CSJ	TIP FY	HWY	PHASE	CITY	YOE COST	
HOUSTON	HOUSTON-GALVESTON		0912-00-543	2020	CS	C	PEARLAND	\$ 40,033,000	
LIMITS FROM: SL 8		PROJECT SPONSOR: CITY OF PEARLAND							
LIMITS TO: FM 518		REVISION DATE: 07/2018							
PROJECT WIDEN FROM 2 TO 4 LANES DIVIDED		MPO PROJ NUM: 7602							
DESCR:		FUNDING CAT(S): 7							
REMARKS P7: Facility: MYKAWA RD		PROJECT HISTORY: Amendment #MAY-2018 - 5/25/18 - Program projects in the HISTORY: 2019-2022 TIP.							
TOTAL PROJECT COST INFORMATION			AUTHORIZED FUNDING BY CATEGORY/SHARE						
PRELIM ENG: \$	1,961,617	COST OF APPROVED PHASES \$ 40,033,000	CATEGORY	FEDERAL	STATE	REGIONAL	LOCAL	LC	TOTAL
ROW PURCH: \$	1,858,000		7	\$ 32,026,400	\$ 0	\$ 0	\$ 8,006,600	\$ 0	\$ 40,033,000
CONST COST: \$	40,033,000		TOTAL	\$ 32,026,400	\$ 0	\$ 0	\$ 8,006,600	\$ 0	\$ 40,033,000
CONST ENG: \$	1,601,320								
CONTING: \$	4,003,300								
INDIRECT: \$	2,033,676								
BOND FIN: \$	0								
POT CHG ORD: \$	0								
TOTAL COST: \$	51,490,913								
2019-2022 STIP		07/2018 Revision: Administrative 04/30/2019							
DISTRICT	MPO	COUNTY	CSJ	TIP FY	HWY	PHASE	CITY	YOE COST	
HOUSTON	HOUSTON-GALVESTON		0912-00-543	2020	CS	C	PEARLAND	\$ 40,033,000	
LIMITS FROM: SL 8		PROJECT SPONSOR: CITY OF PEARLAND							
LIMITS TO: FM 518		REVISION DATE: 07/2018							
PROJECT WIDEN FROM 2 TO 4 LANES DIVIDED		MPO PROJ NUM: 7602							
DESCR:		FUNDING CAT(S): 7							
REMARKS P7: Facility: MYKAWA RD		PROJECT HISTORY: Amendment #MAY-2018 - 5/25/18 - Program projects in the HISTORY: 2019-2022 TIP.							
TOTAL PROJECT COST INFORMATION			AUTHORIZED FUNDING BY CATEGORY/SHARE						
PRELIM ENG: \$	1,961,617	COST OF APPROVED PHASES \$ 40,033,000	CATEGORY	FEDERAL	STATE	REGIONAL	LOCAL	LC	TOTAL
ROW PURCH: \$	1,858,000		7	\$ 32,026,400	\$ 0	\$ 0	\$ 8,006,600	\$ 0	\$ 40,033,000
CONST COST: \$	40,033,000		TOTAL	\$ 32,026,400	\$ 0	\$ 0	\$ 8,006,600	\$ 0	\$ 40,033,000
CONST ENG: \$	1,601,320								
CONTING: \$	4,003,300								
INDIRECT: \$	2,033,676								
BOND FIN: \$	0								
POT CHG ORD: \$	0								
TOTAL COST: \$	51,490,913								
2019-2022 STIP		07/2018 Revision: Approved 09/28/2018							
DISTRICT	MPO	COUNTY	CSJ	TIP FY	HWY	PHASE	CITY	YOE COST	
HOUSTON	HOUSTON-GALVESTON		0912-00-543	2020	CS	C	PEARLAND	\$ 40,033,000	
LIMITS FROM: SL 8		PROJECT SPONSOR: CITY OF PEARLAND							
LIMITS TO: FM 518		REVISION DATE: 07/2018							
PROJECT WIDEN FROM 2 TO 4 LANES DIVIDED		MPO PROJ NUM: 7602							
DESCR:		FUNDING CAT(S): 7							
REMARKS P7: Facility: MYKAWA RD		PROJECT HISTORY: Amendment #MAY-2018 - 5/25/18 - Program projects in the HISTORY: 2019-2022 TIP.							
TOTAL PROJECT COST INFORMATION			AUTHORIZED FUNDING BY CATEGORY/SHARE						
PRELIM ENG: \$	1,961,617	COST OF APPROVED PHASES \$ 40,033,000	CATEGORY	FEDERAL	STATE	REGIONAL	LOCAL	LC	TOTAL
ROW PURCH: \$	1,858,000		7	\$ 32,026,400	\$ 0	\$ 0	\$ 8,006,600	\$ 0	\$ 40,033,000
CONST COST: \$	40,033,000		TOTAL	\$ 32,026,400	\$ 0	\$ 0	\$ 8,006,600	\$ 0	\$ 40,033,000
CONST ENG: \$	1,601,320								
CONTING: \$	4,003,300								
INDIRECT: \$	2,033,676								
BOND FIN: \$	0								
POT CHG ORD: \$	0								
TOTAL COST: \$	51,490,913								
2017-2020 STIP		07/2016 Revision: Administrative 11/16/2017							

DISTRICT	MPO	COUNTY	CSJ	TIP FY	HWY	PHASE	CITY	YOE COST
HOUSTON	HOUSTON-GALVESTON		0912-00-543	2020	CS	C	PEARLAND	\$ 40,033,000
LIMITS FROM: SL 8				Comment History		PROJECT SPONSOR: CITY OF PEARLAND		
LIMITS TO: FM 518						REVISION DATE: 07/2016		
PROJECT WIDEN FROM 2 TO 4 LANES DIVIDED						MPO PROJ NUM: 7602		
DESCR:						FUNDING CAT(S): 7		
REMARKS P7: Facility: MYKAWA RD						PROJECT HISTORY:		
2018/09/27 09:48:48						07/2018: Approved		
<b>TOTAL PROJECT COST INFORMATION</b>								
PRELIM ENG:	\$ 1,961,617							
ROW PURCH:	\$ 1,858,000	COST OF APPROVED PHASES		\$ 32,026,400	\$ 0	\$ 0	\$ 8,006,600	\$ 0
CONST COST:	\$ 40,033,000							\$ 40,033,000
CONST ENG:	\$ 1,601,320							\$ 0
CONTING:	\$ 4,003,300							\$ 0
INDIRECT:	\$ 2,033,676							\$ 0
BOND FIN:	\$ 0							\$ 0
POT CHG ORD:	\$ 0							\$ 0
TOTAL COST:	\$ 51,490,913							\$ 40,033,000
2017-2020 STIP 07/2016 Revision: Administrative 11/06/2017								
2013/03/01 11:26:46								
2013/02/26 15:46:32								
HOUSTON	HOUSTON-GALVESTON		0912-00-543	2020	CS	C	PEARLAND	\$ 40,033,000
LIMITS FROM: BW 8				Project information consistent w/ .pdf submittal.		PROJECT SPONSOR: CITY OF PEARLAND		
LIMITS TO: FM 518						REVISION DATE: 07/2016		
PROJECT WIDEN FROM 2 TO 4 LANES DIVIDED						MPO PROJ NUM: 7602		
DESCR:						FUNDING CAT(S): 7		
REMARKS P7: Facility: MYKAWA RD						PROJECT HISTORY:		
2017/10/28 14:59:58						07/2016: Approved		
<b>TOTAL PROJECT COST INFORMATION</b>								
PRELIM ENG:	\$ 1,961,617							
ROW PURCH:	\$ 1,858,000	COST OF APPROVED PHASES		\$ 32,026,400	\$ 0	\$ 0	\$ 8,006,600	\$ 0
CONST COST:	\$ 40,033,000							\$ 40,033,000
CONST ENG:	\$ 1,601,320							\$ 0
CONTING:	\$ 4,003,300							\$ 0
INDIRECT:	\$ 2,033,676							\$ 0
BOND FIN:	\$ 0							\$ 0
POT CHG ORD:	\$ 0							\$ 0
TOTAL COST:	\$ 51,490,913							\$ 40,033,000
2017-2020 STIP 07/2016 Revision: Approved 12/19/2016								
HOUSTON	HOUSTON-GALVESTON		0912-00-543	2020	CS	C	PEARLAND	\$ 40,033,000
LIMITS FROM: BW 8						PROJECT SPONSOR: CITY OF PEARLAND		
LIMITS TO: FM 518						REVISION DATE: 07/2016		
PROJECT WIDEN TO 4-LANE BLVD SECTION						MPO PROJ NUM: 7602		
DESCR:						FUNDING CAT(S): 7		
REMARKS P7: Facility: MYKAWA RD						PROJECT HISTORY:		
2015/12/18 11:59:11						07/2016: Approved		
<b>TOTAL PROJECT COST INFORMATION</b>								
PRELIM ENG:	\$ 1,961,617							
ROW PURCH:	\$ 1,858,000	COST OF APPROVED PHASES		\$ 32,026,400	\$ 0	\$ 0	\$ 8,006,600	\$ 0
CONST COST:	\$ 40,033,000							\$ 40,033,000
CONST ENG:	\$ 1,601,320							\$ 0
CONTING:	\$ 4,003,300							\$ 0
INDIRECT:	\$ 2,033,676							\$ 0
BOND FIN:	\$ 0							\$ 0
POT CHG ORD:	\$ 0							\$ 0
TOTAL COST:	\$ 51,490,913							\$ 40,033,000
2015-2018 STIP 11/2015 Revision: Administrative 04/26/2016								
HOUSTON	HOUSTON-GALVESTON		0912-00-543	2016	CS		PEARLAND	\$ 0
LIMITS FROM: BW 8						PROJECT SPONSOR: CITY OF PEARLAND		
LIMITS TO: FM 518						REVISION DATE: 11/2015		
PROJECT WIDEN TO 4-LANE BLVD SECTION						MPO PROJ NUM: 7602		
DESCR:						FUNDING CAT(S):		
REMARKS P7: Facility: MYKAWA RD						PROJECT ADMIN MOD - Amendment # 47 - Add CSJ number.		
2015/12/18 11:59:11						PROJECT HISTORY:		
<b>TOTAL PROJECT COST INFORMATION</b>								
PRELIM ENG:	\$ 1,044,000							
ROW PURCH:	\$ 1,858,000	COST OF APPROVED PHASES		\$ 0	\$ 0	\$ 0	\$ 0	\$ 0
CONST COST:	\$ 40,033,000							\$ 0
CONST ENG:	\$ 0							\$ 0
CONTING:	\$ 0							\$ 0
INDIRECT:	\$ 0							\$ 0
BOND FIN:	\$ 0							\$ 0
POT CHG ORD:	\$ 0							\$ 0
TOTAL COST:	\$ 42,935,000							\$ 0
2015-2018 STIP 11/2015 Revision: Approved 01/22/2016								
HOUSTON	HOUSTON-GALVESTON		0000-00-000	2016	CS		PEARLAND	\$ 0
LIMITS FROM: BW 8						PROJECT SPONSOR: CITY OF PEARLAND		
LIMITS TO: FM 518						REVISION DATE: 11/2015		
PROJECT WIDEN TO 4-LANE BLVD SECTION						MPO PROJ NUM: 7602		
DESCR:						FUNDING CAT(S):		
REMARKS P7: Facility: MYKAWA RD						PROJECT HISTORY: Amendment #37 - 11/20/15 - Delay construction to FY 2020 (federal funding programmed in Ten-Year Plan). Design programmed in FY 2017 under MPOID 17083.		
2015/12/18 11:59:11						PROJECT HISTORY:		
<b>TOTAL PROJECT COST INFORMATION</b>								
PRELIM ENG:	\$ 1,044,000							
ROW PURCH:	\$ 1,858,000	COST OF APPROVED PHASES		\$ 0	\$ 0	\$ 0	\$ 0	\$ 0
CONST COST:	\$ 40,033,000							\$ 0
CONST ENG:	\$ 0							\$ 0
CONTING:	\$ 0							\$ 0
INDIRECT:	\$ 0							\$ 0
BOND FIN:	\$ 0							\$ 0
POT CHG ORD:	\$ 0							\$ 0
TOTAL COST:	\$ 42,935,000							\$ 0
2015-2018 STIP 07/2014 Revision: Approved 12/02/2014								
HOUSTON	HOUSTON-GALVESTON	BRAZORIA	0000-00-000	2016	CS	C,E,R	PEARLAND	\$ 20,656,000
LIMITS FROM: BW 8						PROJECT SPONSOR: Pearland		
LIMITS TO: FM 518						REVISION DATE: 07/2014		

<b>PROJECT</b> WIDEN 2-LANE TO 4-LANE W/ RAISED MEDIAN (S OF MCHARD) & FLUSH MEDIAN (N OF MCHARD)				<b>MPO PROJ NUM:</b> 7602					
<b>DESCR:</b>				<b>FUNDING CAT(S):</b> 3LC					
<b>REMARKS P7:</b> Facility: MYKAWA RD				<b>PROJECT HISTORY:</b>					
<b>TOTAL PROJECT COST INFORMATION</b>			<b>AUTHORIZED FUNDING BY CATEGORY/SHARE</b>						
PRELIM ENG: \$	674,853	<b>COST OF APPROVED PHASES</b> \$ 20,656,000	<b>CATEGORY</b>	<b>FEDERAL</b>	<b>STATE</b>	<b>REGIONAL</b>	<b>LOCAL</b>	<b>LC</b>	<b>TOTAL</b>
ROW PURCH: \$	3,443,126		3LC	\$ 0	\$ 0	\$ 0	\$ 20,656,000	\$ 0	\$ 20,656,000
CONST COST: \$	13,772,503		<b>TOTAL</b>	\$ 0	\$ 0	\$ 0	\$ 20,656,000	\$ 0	\$ 20,656,000
CONST ENG: \$	688,625								
CONTING: \$	1,377,250								
INDIRECT: \$	699,643								
BOND FIN: \$	0								
POT CHG ORD: \$	0								
<b>TOTAL COST: \$</b>	<b>20,656,000</b>								
<b>2013-2016 STIP</b>									
<b>07/2012 Revision: Approved 11/01/2012</b>									
<b>DISTRICT</b>	<b>MPO</b>	<b>COUNTY</b>	<b>CSJ</b>	<b>TIP FY</b>	<b>HWY</b>	<b>PHASE</b>	<b>CITY</b>	<b>YOE COST</b>	
HOUSTON	HOUSTON-GALVESTON	BRAZORIA	0000-00-000	2016	CS	C,E,R	PEARLAND	\$ 20,656,000	
<b>LIMITS FROM:</b> BW 8							<b>PROJECT SPONSOR:</b> PEARLAND		
<b>LIMITS TO:</b> FM 518							<b>REVISION DATE:</b> 07/2012		
<b>PROJECT</b> WIDEN 2-LANE TO 4-LANE W/ RAISED MEDIAN (S OF MCHARD) & FLUSH MEDIAN (N OF MCHARD)				<b>MPO PROJ NUM:</b> 7602					
<b>DESCR:</b>				<b>FUNDING CAT(S):</b> 3LC					
<b>REMARKS P7:</b> Facility: MYKAWA RD				<b>PROJECT HISTORY:</b>					
<b>TOTAL PROJECT COST INFORMATION</b>			<b>AUTHORIZED FUNDING BY CATEGORY/SHARE</b>						
PRELIM ENG: \$	674,853	<b>COST OF APPROVED PHASES</b> \$ 20,656,000	<b>CATEGORY</b>	<b>FEDERAL</b>	<b>STATE</b>	<b>REGIONAL</b>	<b>LOCAL</b>	<b>LC</b>	<b>TOTAL</b>
ROW PURCH: \$	3,443,126		3LC	\$ 0	\$ 0	\$ 0	\$ 20,656,000	\$ 0	\$ 20,656,000
CONST COST: \$	13,772,503		<b>TOTAL</b>	\$ 0	\$ 0	\$ 0	\$ 20,656,000	\$ 0	\$ 20,656,000
CONST ENG: \$	688,625								
CONTING: \$	1,377,250								
INDIRECT: \$	699,643								
BOND FIN: \$	0								
POT CHG ORD: \$	0								
<b>TOTAL COST: \$</b>	<b>20,656,000</b>								

MPOID	CSJ#	COUNTY	SPONSOR	FACILITY	FROM	TO	DESCRIPTION	LENGTH (mi)	MAIN LANES	FRONTAGE LANES	FISCAL YEAR	ANALYSIS YEAR*	TOTAL PROJECT COST (M, YOY)
18652		BRAZORIA	GULF COAST TRANSIT DISTRICT	LAKE JACKSON/ANGLETON UZA	VA	VA	TRANSIT CAPITAL EXPENDITURES TO INCLUDE PROJECT AND CONSTRUCTION MANAGEMENT: FY 2020	0.00	(0,0)	(0,0)	2021	EXEMPT	\$0.91
18653		BRAZORIA	GULF COAST TRANSIT DISTRICT	LAKE JACKSON/ANGLETON UZA	VA	VA	TRANSIT PLANNING EXPENDITURES: FY 2020	0.00	(0,0)	(0,0)	2021	EXEMPT	\$0.14
18654		BRAZORIA	GULF COAST TRANSIT DISTRICT	LAKE JACKSON/ANGLETON UZA	VA	VA	TRANSIT OPERATING EXPENDITURES: FY 2020	0.00	(0,0)	(0,0)	2021	EXEMPT	\$0.10
18759		BRAZORIA	GULF COAST TRANSIT DISTRICT	LAKE JACKSON/ANGLETON UZA	VA	VA	CONSTRUCTION EXPENDITURES FOR LAKE JACKSON TRANSIT MAINTENANCE FACILITY	0.00	(0,0)	(0,0)	2021	EXEMPT	\$0.20
13565		BRAZORIA	CITY OF PEARLAND	MAX RD	SL 8	MCHARD RD	WIDEN FROM 2 TO 4 LANES UNDIVIDED	0.50	(2,4)	(0,0)	2026	2030	\$13.96
18133		BRAZORIA	CITY OF PEARLAND	MAX RD	HUGHES RANCH RD	FUTURE MCHARD RD	WIDEN FROM 2 TO 4 LANE DIVIDED ROADWAY WITH RAISED MEDIANS, STORM SEWERS, OUTFALLS AND DETENTION, SANITARY SEWER, WATER LINES, AND SHARED USE PATH	0.87	(2,4)	(0,0)	2026	2030	\$31.67
7874	0912-31-290	BRAZORIA	CITY OF PEARLAND	MCHARD RD	CULLEN BLVD	MYKAWA RD	CONSTRUCT 4 LANE DIVIDED ON NEW LOCATION	3.50	(0,4)	(0,0)	2020	NRS	\$47.77
7624		BRAZORIA	CITY OF PEARLAND	MYKAWA RD	FM 518	WALNUT ST W	CONSTRUCT NEW 4 LANE DIVIDED TO CONNECT MYKAWA TO VETERANS	0.25	(0,4)	(0,0)	2030	2040	\$6.75
				MYKAWA RD	HARRIS C/L	FM 518	WIDEN FROM 2 TO 4 LANES DIVIDED	2.40	(2,4)	(0,0)			
7858		BRAZORIA	PORT OF FREEPORT	NAVIGATION BLVD	FM 1495	PETE SCHAFF BLVD	WIDEN TRUCK QUEUING AREA WITH 10 REINFORCED CONCRETE PAVEMENT TO PROVIDE A LEFT TURN LANE AT THE ENTRANCE TO THE PORT OF FREEPORT AND CONSTRUCT ADDITIONAL QUEUING SPACE"	0.5	(4,4)	(0,0)	2025	2030	\$0.72
11655		BRAZORIA	CITY OF PEARLAND	O'DAY RD	MCHARD RD	BROADWAY	WIDEN FROM 2 TO 4 LANES DIVIDED	1.93	(2,4)	(0,0)	2026	2030	\$20.71
7631		BRAZORIA	CITY OF PEARLAND	ORANGE ST W	O'DAY RD	HATFIELD ST	CONSTRUCT 4 LANES UNDIVIDED	0.47	(0,4)	(0,0)	2030	2040	\$5.66
7630		BRAZORIA	CITY OF PEARLAND	PEARLAND PKWY	DIXIE FARM RD	FM 2351	CONSTRUCT 4 LANE DIVIDED ON NEW LOCATION	1.75	(0,4)	(0,0)	2026	2030	\$19.53
18135		BRAZORIA	BRAZORIA COUNTY	PEARLAND PKWY	DIXIE FARM RD	CR 129 (FM 2351)	EXTEND 4 LANE DIVIDED ROADWAY WITH RAISED MEDIANS, CURB AND GUTTERS, SIDEWALKS, TRAFFIC SIGNALS, STORM SEWERS AND DETENTION	1.80	(0,4)	(0,0)	2042	2045	\$59.97
7857		BRAZORIA	PORT OF FREEPORT	PORT RD W	5TH ST E	TERMINAL ST	CONSTRUCT TWO 16 FT LANES W/ 8 FT SHOULDERS; RECONSTRUCTION OF INTERSECTION @ 5TH ST E AND TERMINAL ST; AND PORTION OF PORT RD W AT INTERSECTION OF NEW ENTRANCE RD	0.35	(0,4)	(0,0)	2025	2030	\$1.20
17090	0598-02-120	BRAZORIA	TXDOT HOUSTON DISTRICT	SH 288	SH 6	FM 1462	INSTALL NEW ITS EQUIPMENT AND INFRASTRUCTURE	9.62	(0,0)	(0,0)	2022	EXEMPT	\$10.04
7619	0598-02-119	BRAZORIA	CITY OF PEARLAND	SH 288	FM 518	CR 59	CONSTRUCT NEW 2 LANE NORTHBOUND FRONTAGE ROAD	1.03	(6,6)	(0,2)	2021	2030	\$5.89

\*Analysis Year - NRS, EREA, and EXEMPT are exempt from conformity or are not considered regionally significant under H-GAC regional emissions analysis.

MPOID	CSJ#	COUNTY	SPONSOR	FACILITY	FROM	TO	DESCRIPTION	LENGTH (mi)	MAIN LANES	FRONTAGE LANES	FISCAL YEAR	ANALYSIS YEAR*	TOTAL PROJECT COST (M, YOE)
18643		HARRIS	METRO	METRO SERVICE AREA	VA	VA	RIDE WITH H.E.A.R.T. TRANSIT SERVICES	0.00	(0,0)	(0,0)	2021	EXEMPT	\$0.56
18644		HARRIS	METRO	METRO SERVICE AREA	VA	VA	RIDE WITH H.E.A.R.T. VEHICLE ACQUISITION	0.00	(0,0)	(0,0)	2021	EXEMPT	\$0.07
18645		HARRIS	METRO	METRO SERVICE AREA	VA	VA	BUS MONITORING EQUIPMENT TO DETER ASSAULTS ON OPERATORS	0.00	(0,0)	(0,0)	2021	EXEMPT	\$0.20
16277		HARRIS	METRO	METRORAIL SYSTEM	VA	VA	RAIL CAPITALIZED MAINTENANCE: FY 2017	0.00	(0,0)	(0,0)	2020	EXEMPT	\$4.50
18096		HARRIS	MIDTOWN MANAGEMENT DISTRICT	MIDTOWN MANAGEMENT DISTRICT	ISABELLA ST	GRAY STREET	(RE)CONSTRUCTION OF 6' SIDEWALKS AND ADA-COMPLIANT RAMPS; THE INSTALLATION OF PEDESTRIAN AMENITIES SUCH AS ENHANCED STREET LIGHTING, PEDESTRIAN LIGHTING, FUNCTIONAL LANDSCAPING, BENCHES, AND TRASH RECEPTACLES; THE INSTALLATION OF AN ON-STREET BI-DIRECTIONAL BICYCLE TRACK ALONG CRAWFORD STREET / ALMEDA ROAD AND INSTALLATION OF PEDESTRIAN AND BICYCLE SIGNALS.	NULL	(0,0)	(0,0)	2039	EXEMPT	\$25.49
18018	0912-72-581	HARRIS	CITY OF HOUSTON - HOUSTON PUBLIC WORKS	MKT-WHITE OAK BAYOU BICYCLE PEDESTRIAN CONNECTION	MKT TRAIL	WHITE OAK BAYOU TRAIL	CONSTRUCT 10' SHARED USE PATH, STRIPING, BRIDGE RAILING, PAVEMENT MARKINGS, SIGNAGE, LANDSCAPE/HARDSCAPE AND ASSOCIATED INTERSECTION IMPROVEMENTS.	0.50	(0,0)	(0,0)	2022	EXEMPT	\$2.99
18174		HARRIS	METRO	LRT EXTENSION TO HOBBY AIRPORT	MLK/GRIGG RD	HOBBY AIRPORT	EXTENSION OF GREEN/PURPLE/SOUTHEAST FROM MLK/GRIGGS TO HOBBY AIRPORT VIA MLK AND EAST BELLFORT; INCLUDES 9 STATIONS	7.40	(0,0)	(0,0)	2040	2045	\$2,678.36
7607		HARRIS	CITY OF LA PORTE	MYKAWA RD	SL 8	BRAZORIA C/L	WIDEN FROM 2 TO 4 LANES DIVIDED	0.33	(2,4)	(0,0)	2027	2030	3.21
7607		HARRIS	CITY OF LA PORTE	N 16TH ST	W. MAIN ST	SH 146	CONSTRUCT 4-LANE DIVIDED ARTERIAL AND CROSSOVER/UNDERPASS AT INTERSECTION	1.25	(2,4)	(0,0)	2027	2030	\$8.69
8047		HARRIS	HARRIS COUNTY	N DIAMONDHEAD BLVD	GOLF CLUB DR	PORT OF CALL	WIDEN TO 4-LANE BLVD W/CURBS AND STORM SEWERS	NULL	(2,4)	(0,0)	2023	2030	\$1.34
17081	0912-72-541	HARRIS	CITY OF WEBSTER	NASA RD 1 BYPASS	FM 528	LANDING BLVD/NASA 1 BYPASS AT IH 455	CONSTRUCT 4-LANE DIVIDED ROADWAY ON NEW ALIGNMENT WITH PEDESTRIAN/BICYCLE ACCOMODATIONS	0.51	(0,4)	(0,0)	2023	NRS	\$8.00
17079	0912-72-386	HARRIS	EAST END DISTRICT	NAVIGATION BLVD	AT JENSEN DR/RUNNELS ST		RECONSTRUCT INTERSECTION AS URBAN ROUNDABOUT INCLUDING PEDESTRIAN STREETScape AND BUS STOP IMPROVEMENTS	0.10	(4,4)	(0,0)	2021	EXEMPT	\$3.64
7647		HARRIS	NORTH HOUSTON DISTRICT	NORTH HOUSTON HIKE & BIKE TRAILS	THRU NORTH HOUSTON DISTRICT		HIKE & BIKE TRAIL SYSTEM PACKAGE OF PROJECTS ON AND OFF STREET TRAILS	0.00	(0,0)	(0,0)	2027	EXEMPT	\$29.83
15544		HARRIS	METRO	NORTHLINE TRANSIT CENTER	VA	VA	NORTHLINE TRANSIT CENTER: FY 2020	0.00	(0,0)	(0,0)	2020	EXEMPT	\$29.40
15549		HARRIS	METRO	NORTHLINE TRANSIT CENTER			NORTHLINE TRANSIT CENTER	0.00	(0,0)	(0,0)	2021	EXEMPT	\$41.98
18173		HARRIS	METRO	NORTHLINE TRANSIT CENTER NORTH LRT - (RED LINE)	NORTHLINE TRANSIT CENTER	N SHEPHERD PARK AND RIDE	EXTENSION OF RED/NORTH LRT LINE FROM NORTHLINE TRANSIT CENTER TO N. SHEPHERD PARK AND RIDE	5.90	(0,0)	(0,0)	2040	2045	\$1,097.88

\*Analysis Year - NRS, EREA, and EXEMPT are exempt from conformity or are not considered regionally significant under H-GAC regional emissions analysis.