

26 May 2021

To: Mayor and City

Council members

Progress report fyi on three projects to improve traffic movements in the Pearland Parkway Corridor. Clay



Pearland Parkway Traffic Improvements

Pearland Parkway Traffic Circle Improvements

Intersection Improvements-Winward Bay at Broadway

Is it in Budget?		Is it on Schedule for the Current Phase per the Contract?		Community Benefit
<input checked="" type="checkbox"/> Yes	<input type="checkbox"/> No	<input checked="" type="checkbox"/> Yes	<input type="checkbox"/> No	Sound Infrastructure
		Project Phase? Construction		

Highlights:

This report provides progress information on three projects that were bid together to produce economies of scale. A single contractor is performing all of the work at all three project locations.

Pearland Parkway Traffic Circle & Parkway Improvements:

- Contractor has completed the installation of 24" RCP and 7X4 Box Culverts on the west side of Pearland Parkway up to the southwest side of the traffic circle.
- Electrical subcontractors are continuing to install conduit along with "stub-ups" for additional illumination in and around the future round-about.
- Contractor has completed placing the proposed turn bays at Pearland Parkway and Summit Springs.
- Illumination conduit is also being installed at Summit Springs intersection
- Contractor has completed the saw-cut and excavation for the road expansion on the northbound side of the traffic circle.
- Contractor has begun planting trees inside of the proposed circle area and will also continue with import fill installation for final grade(s) within the traffic circle.
- The Winward Bay Intersection contains multiple pre-existing utility installations on the northside of the intersection to include water, fiber and natural gas. Locations and depths have been identified

Broadway-Winward Bay Intersection Improvements:

- Contractor has mobilized to the Broadway/Winward Bay Intersection to begin saw-cutting and excavating the turning lane at Winward Bay. Construction began on 3 May 2021. This construction activity entails pavement removal at the nose of each median facing Winward Bay along with curb removal between STA 1+50 and STA 9+50.
- All potential utility conflicts were identified during a site visit with the COP Construction Manager, Teamwork Construction and Kimley-Horn.

Pearland Parkway and Dixie Farm

- Project includes intersection construction of two left turn bays at Pearland Parkway and Oakridge Drive and Dixie Farm Road near Long Oak Drive.



- Turn Bays are complete at Oakridge Drive. Concrete placement(s) for the turn bay at Dixie Farm Road and Long Oak have been delayed due to a utility conflict stemming from a 30” natural gas line that runs directly under the proposed turn bay.
- Seven trees must be relocated in order to meet the requirement set forth by the City that all trees must be 7’ from back-of-curb.
- Enbridge Energy has set aside employees to observe construction activity near the pipeline.

Due to the weather all three projects have had delays on site. The area is very saturated and construction will be unable to proceed until it is dried.

Budget Info:

Pearland Parkway Traffic Improvements

Funding Sources	Series	To Date	Future	Total Budget
General Revenue - Cash				-
Certificates of Obligation				-
Certificates of Obligation				-
General Obligation Bonds	2020	1,124,000		1,124,000
General Obligation Bonds				-
W/S Revenue Bonds				-
Impact Fee - Debt				-
Other Funding Sources				-
Total Funding Sources		1,124,000	-	1,124,000

Expenditures	To Date	Future	Total
PER			-
Land			-
Design	128,006		128,006
Construction	627,156		627,156
Construction Management/Inspection			-
Construction Materials Testing	20,288		20,288
FF&E			-
Total Expenditures	775,451	-	775,451

Project Contingency	11%	124,000
Project Balance		224,549

Staff will be reducing the project budget at mid-year projections.



Pearland Parkway Traffic Circle Modification

Funding Sources	Series	To Date	Future	Total Budget
General Revenue - Cash				-
Certificates of Obligation				-
Certificates of Obligation				-
General Obligation Bonds	2020	1,272,000		1,272,000
General Obligation Bonds	TBS 2021	2,000,000		2,000,000
W/S Revenue Bonds				-
Impact Fee - Debt				-
Other Funding Sources				-
Total Funding Sources		3,272,000	-	3,272,000

Expenditures	To Date	Future	Total
PER			-
Land			-
Design	389,404		389,404
Construction	2,725,942		2,725,942
Construction Management/Inspection			-
Construction Materials Testing	83,125		83,125
FF&E			-
Total Expenditures	3,198,471	-	3,198,471

Project Contingency	2%	73,529
Project Balance		0

Intersection Improvements-Winward Bay at Broadway

Funding Sources	Series	To Date	Future	Total Budget
General Revenue - Cash				-
Certificates of Obligation	2018	750,000		750,000
Certificates of Obligation	2020A	555,000		555,000
Certificates of Obligation				-
General Obligation Bonds				-
General Obligation Bonds				-
W/S Revenue Bonds				-
Impact Fee - Debt				-
Fund Balance - Fund 501 balance		220,000		220,000
Total Funding Sources		1,525,000	-	1,525,000

Expenditures	To Date	Future	Total
PER			-
Land			-
Design	114,206		114,206
Construction	796,295	5,225	801,520
Construction Management/Inspection			-
Construction Materials Testing	21,183		21,183



			-
Total Expenditures	931,684	5,225	936,909

Project Contingency	7%		100,000
Project Balance			488,091

Staff will be reducing the project budget at mid-year projections.

Schedule Info:

Pearland Parkway Traffic Improvements

	Base Line	Current
Design Start	July-19	July-19
Bid Start	December-19	October-20
Construction Start	January-21	March-21
Construction Completion	December-21	

Pearland Parkway Traffic Circle Modification

	Base Line	Current
Design Start	July-19	July-19
Bid Start	January-20	October-20
Construction Start	January-21	March-21
Construction Completion	July-22	

Intersection Improvements-Winward Bay at Broadway

	Base Line	Current
Design Start	July-18	September-18
Bid Start	March-19	October-20
Construction Start	January-21	March-21
Construction Completion	December-21	

Upcoming Work Items:

- Contractor is continuing to place 7X4 inlet boxes along with RCP at the Traffic Circle
- Contractor is saw-cutting and excavating for lane expansion on the east and west sides of the circle.
- Locations for relocation of all trees that need to be removed and relocated have been identified per instructions for the COP Urban Forrester for all three projects and trees will be moved once ground conditions allow
- Contractor continues with demolition of pre-existing irrigation and drainage for eventual replacement per the plan set in all locations
- Placement of forms, reinforcement and concrete along with doweled in curbs will be underway in all locations as required by schedule
- Placement of conduit for light pole installation continues
- Continue installation of the turn bay at Pearland Parkway and Windward Bay

Project Manager: Fatema Weekly



Construction Manager: Michael Collins

Designer: Alliance Transportation Group / Kimley Horn

Contractor: Teamwork Construction

Scope:

The Pearland Parkway Traffic Improvements: project consists of the installation of a traffic signal at the intersection of Pearland Parkway and Forrest Park Lane/Summit Springs Lane. Directional pedestrian ramps will be included along with two left turn bays.

Pearland Parkway Traffic Circle Modification: is a reconfiguration of the existing rotary traffic to a roundabout. After construction, higher speed traffic flow will be managed by an outside turning lane designed for higher-speed right turn movements.

Intersection Improvements-Winward Bay at Broadway: The project will provide the installation of a traffic signal located at the intersection of Winward Bay and Broadway

Justification:

The Pearland Parkway Traffic Circle Modification project is designed to improve the existing rotary traffic circle at the int Accident reports dating back to 2013 indicated the need for the reduction of uncontrolled left turn movements along the entire corridor. The installation of a signal at this complex intersection will reduce the incidence of unprotected left turn movements and consequently reduce the number of conflicting left turn movements. Alliance Transportation Group was selected through the City's Qualification Based selection process based on their familiarity with Pearland Parkway traffic issues and historic consultation on potential solutions and the proximity of this signal installation to the modifications to the traffic circle. Council approved the design contract for Alliance Transportation Group in July 2019 and the plans and specifications (bid documents) were completed in October 2020. The project was advertised and bid in November this year in conjunction with the above and below two projects as a means of gaining economies of scale. In addition, this allows for the contractor to manage both projects eliminating the need for additional outside coordination.

Accident reports dating back to 2013 indicated the need for the reduction of uncontrolled left turn movements along the entire corridor. These modifications provide the reduction of unprotected left turn movements and will reduce the number of entering left turns. The Pearland Parkway Traffic Improvements consists of the installation of traffic signals and improvements at the intersection of Pearland Parkway and Forest Park Lane/Summit Springs Lane. Directional pedestrian ramps and cross walks across Pearland Parkway will be included. Left turn bays on the minor street approaches will be striped.

During the speed study that was conducted along Broadway, an analysis of vehicular crash data was reviewed at the intersection. In addition, a traffic signal study was conducted. It was determined that a signal was warranted at Winward Bay to assist in providing safe vehicular movement.

Previous Memos:

Pearland Parkway Traffic Improvements- 10.31.19, 1.23.20

Pearland Parkway Traffic Circle Modifications- 11.27.19, 7.30.20, 2.20.20, 1.07.21

Intersection Improvements-Winward Bay at Broadway: 08.39.18, 11.07.19, 1.30.20



Project Location Map:
Pearland Parkway Traffic Improvements

VICINITY MAP



Legend/Notes

Addresses



1:1,492
1 inch = 124 feet
NORTH
This product is for informational purposes only and may not be prepared or be suitable for legal, engineering, or surveying purposes.
MAP PREPARED: OCTOBER 24, 2019

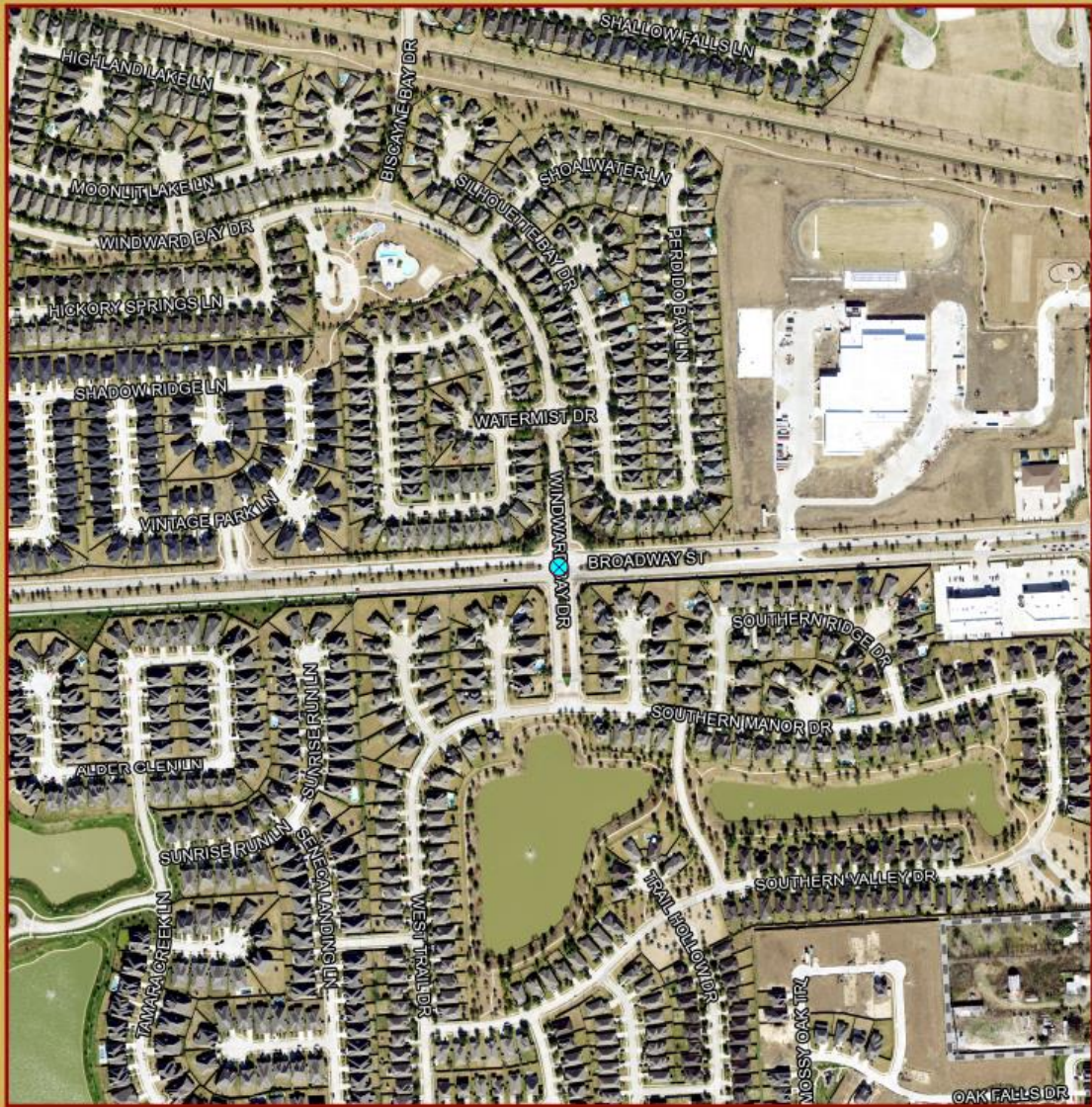


Pearland Parkway Traffic Circle Modifications





Intersection Improvements Windward Bay/Pearland Parkway/Dixie Farm



ROAD CONSTRUCTION

Broadway & Windward Bay
- traffic signal

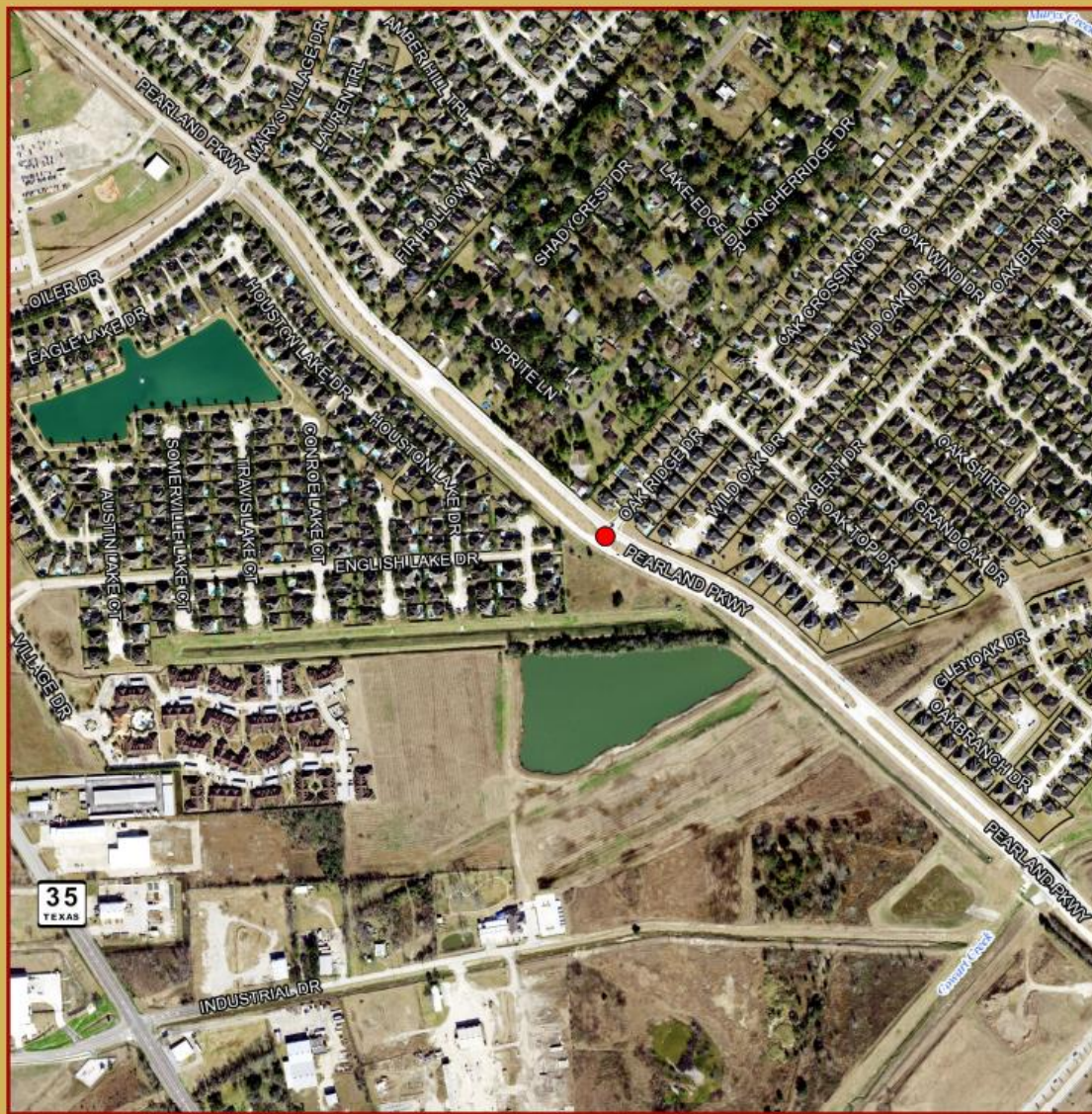
● Road Improvements



This product is for informational purposes and may not have been prepared for or be suitable for legal, engineering, or surveying purposes. It does not represent an on-the-ground survey and represents only the approximate relative location of property boundaries.

1 inch = 500 feet
SEPTEMBER 2018
GIS DEPARTMENT





ROAD CONSTRUCTION
Pearland Pkwy. & Oak Ridge Dr.
 - left turn bay

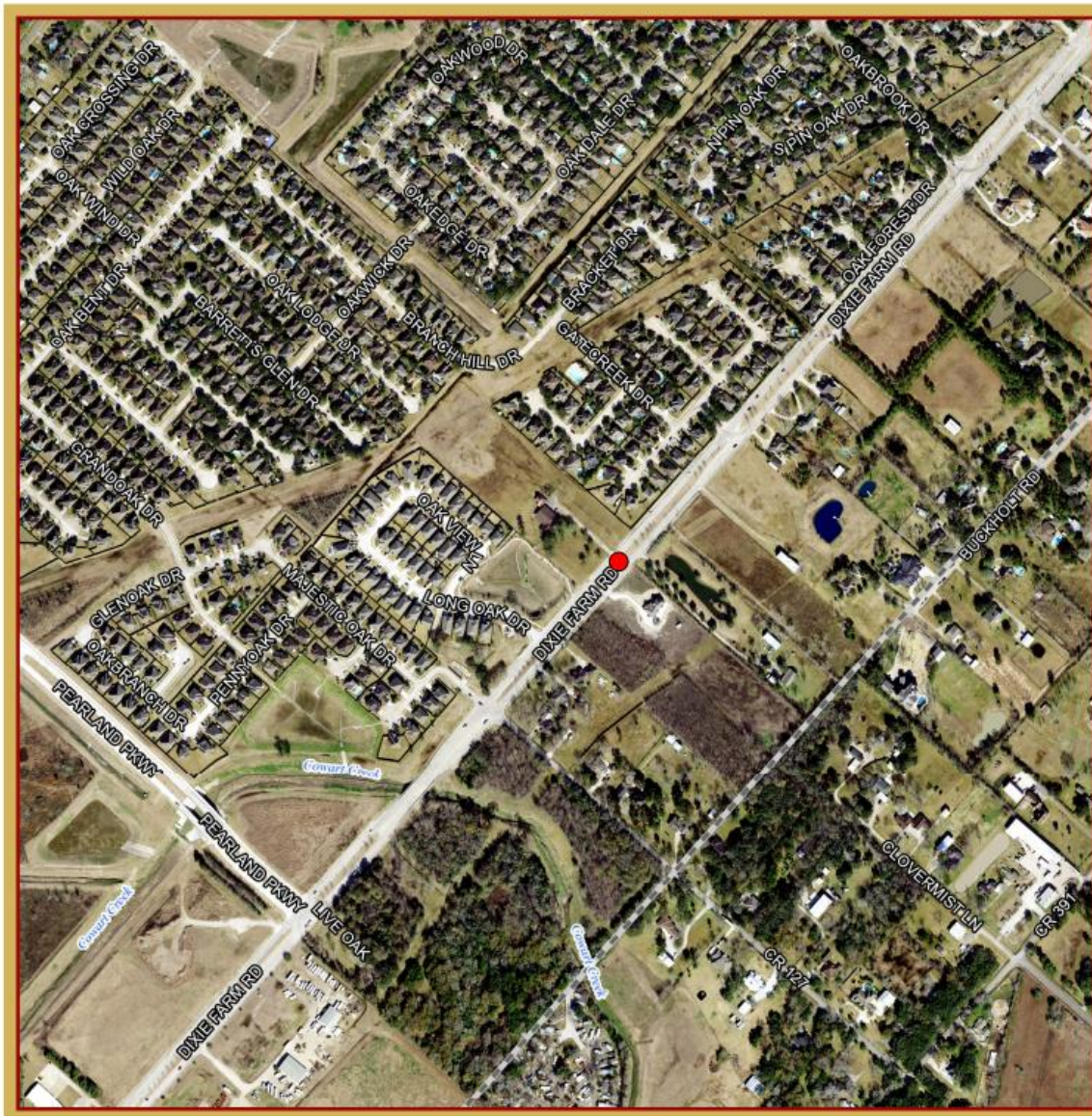
● Road Improvements



This product is for informational purposes and may not have been prepared for or be suitable for legal, engineering, or surveying purposes. It does not represent an on-the-ground survey and represents only the approximate relative location of property boundaries.

1 inch = 605 feet
 AUGUST 2018
 GIS DEPARTMENT





ROAD CONSTRUCTION Dixie Farm Rd. and Long Oak Dr.- left turn bay

● Road Improvements



This product is for informational purposes and may not have been prepared for or be suitable for legal, engineering, or surveying purposes. It does not represent an on-the-ground survey and represents only the approximate relative location of property boundaries.

1 inch = 605 feet
AUGUST 2018
GIS DEPARTMENT





Left Turn Bay at Pearland Parkway and Oakridge Dr. (Facing North)



Left Turn Bay at Pearland Parkway and Oakridge Dr. (Facing South)



Left Turn Lane Formed and Rebar is Tied at Dixie Farm Road and Long Oak Dr.



Trees Have Been Relocated at the Traffic Circle



Construction of Traffic Circle is Underway



Storm Sewer Being Installed in Traffic Circle