



Memo

To: Clay Pearson, City Manager

From: Jameson Appel, Project Manager

CC: Jon Branson, Deputy City Manager
Trent Epperson, Assistant City Manager
Chris Orlea, Director of Parks & Recreation
Robert E. Upton, P.E., Director of Engineering & Projects
Skipper Jones, Assistant Director of Projects

Date: September 3, 2020

Re: Clear Creek Trail – Design Contract Award

3 September 2020
To: Mayor and City Council members
Forthcoming design work for Clear Creek Trail next section, largely funded by TIP grant. Information about trails and pathways master planning went out this week and well received. Clay

Purpose

This memo provides information regarding the proposed award of a contract for professional engineering services for the Clear Creek Trail project. This contract is scheduled for Council on the September 14th, 2020 meeting agenda.

Background

In 2015, the Houston-Galveston Area Council (H-GAC) selected the Clear Creek Trail project application for funding in its Call for Projects under the Transportation Alternatives Program (TAP,) this agreement contains an 80/20 TxDOT/City funding split. TxDOT then sent the draft Advanced Funding Agreement (AFA) to City in November 2017 for review and comment. Staff responded with comments to the draft AFA later that month. Subsequently, the Texas Transportation Commission, in Minute Order 115291 dated August 30, 2018, awarded funding for the projects included in the 2015 TAP Call for Projects including the Clear Creek Trail project. In April 2019, TxDOT sent the final AFA to the City. Staff reviewed and agreed to this version and requested Council approval June 10, 2019.

The trail extends the recently completed segment of the Clear Creek Trail system from Hughes Road to the University of Houston – Clear Lake Pearland Campus (UHCL). The trail's original scope consisted of 12,400 linear feet of ten (10) foot wide concrete bike/pedestrian off roadway trail along the east bank of Clear Creek. The trail extended from Hughes Road north to El Franco Lee Park, crossing to the west bank, with a 750-foot pedestrian bridge planned to run adjacent to Pearland Parkway before the trail continues south down the west side of Pearland Parkway to UHCL.

May 2019, Staff advertised a Request for Qualifications (RFQ) to solicit Statements of Qualifications (SOQ) from qualified teams capable of designing this project utilizing TxDOT standards. Two consulting firms, Half Associates and Gauge Engineering were short listed and brought in for interview by City staff. After consideration, Staff selected Gauge Engineering to perform professional engineering design services for this project. The Gauge design team has been involved in over 10 miles of trail projects for HGAC and has established

contacts/relationships with HCFCD, TxDOT, and BDD4. The Gauge team is certified in the Local Government Project Procedures (LGPP) designation by the Texas Department of Transportation (TxDOT), a requirement for projects which are eligible for reimbursement. Staff is confident that Gauge Engineering will perform well on this project.

Scope of Services and Contract Award

In May 2020, while Gauge Engineering's (Gauge) design contract was in review by TxDOT the project scope was revised by the City based on new information developed in coordination with the U.S. Army Corps of Engineer (USACE) Clear Creek Drainage Project that was funded in 2018. The Clear Creek Drainage Project impacts to the trail system have been captured within the City of Pearland's Trails Master Plan and PEDC's Clear Creek Trail Master. The revision accomplishes better connectivity between the existing Highland Glen trail system and the Clear Creek Trail system and significantly reduces the length of the pedestrian bridge by relocating it in a narrower span of the Clear Creek Drainage Project. The current scope provides a 10-foot trail on both sides of Clear Creek and relocated the pedestrian crossing bridge closer to the connection to El Franco Park, resulting in a reduced bridge span of only 250 feet and the resulting changes stay within the cost estimates of the approved AFA.

The design fee, Opinion of Probable Construction Costs (OPCC) and schedule, from original scope to the revised, stays within the AFA budget and funding allocations. **The proposed revision was approved by HGAC and TxDOT August 2020 without having to do an AFA amendment.** The new scope consists of the design and construction of approximately 18,750 linear feet of ten-foot wide concrete bicycle and pedestrian off-road trail that will run along the east and west bank of Clear Creek and a 250-foot single span bridge. The limits of the project begin at connections to existing trails at Town Ditch and Preserve at Highland Glen, continues north and west to connect to Pearland Parkway and then continues south down Pearland Parkway and terminates at UHCL.

Gauge shall prepare plans, details and compute quantities to include bike trail design, grading, paving, sidewalks and pedestrian ramps, drainage, signing, pavement markings, traffic control plans, storm water pollution prevention plans, landscape architecture, retaining walls, specifications, and cost estimates. Gauge shall also prepare the bridge layouts; and furnish the structural details along with the bridge quantities for the single span bridge crossing. The engineering design scope of services will include ongoing coordination with TxDOT Houston District and HCFCD's Clear Creek Drainage Project, attendance at TxDOT's Design Concept Conference and Utility Coordination Meeting, data collection and site visits, PS&E milestone submittals shall be at 30%, 60% 90%, 95% and final completion for review and approval by both TxDOT and the City, production of the project manual and bid-ready plans, a construction cost estimate at each design milestone, facilitation of regularly scheduled design progress meetings, quality assurance/quality control and constructability review, chair pre-bid conference and issue addenda as necessary, provide bid tabulation and make recommendation of award.

The contract includes basic services: \$357,256.00 and additional services: Environmental \$38,805.13, Bridge Consultant \$28,157.00, Landscape Architect \$59,758.00, Geotechnical \$31,430.78, and Surveyor/SUE \$82,190.00. The total contract amount is \$618,096.91. Approximately 31% of the design work is provided by Disadvantaged Business Enterprises.

Budget Info

Funding Sources	Series	To Date	Future	Total Budget
General Revenue - Cash				-
Certificates of Obligation				-
Certificates of Obligation	TBS	500,000	2,883,872	3,383,872
General Obligation Bonds				-
General Obligation Bonds				-
W/S Revenue Bonds				-
Other Funding Sources (TIP Funds)		788,000	5,896,128	6,684,128
Other Funding Sources		412,000	320,000	732,000
Total Funding Sources		1,700,000	9,100,000	10,800,000

Expenditures	To Date	Future	Total
PER			-
Land		250,000	250,000
Design	16,000	618,097	634,097
Construction		8,100,000	8,100,000
Construction Management/Inspection			-
Construction Materials Testing			-
FF&E			-
Total Expenditures	16,000	8,968,097	8,984,097

Project Balance/Contingency	1,815,903
------------------------------------	------------------

Schedule Info

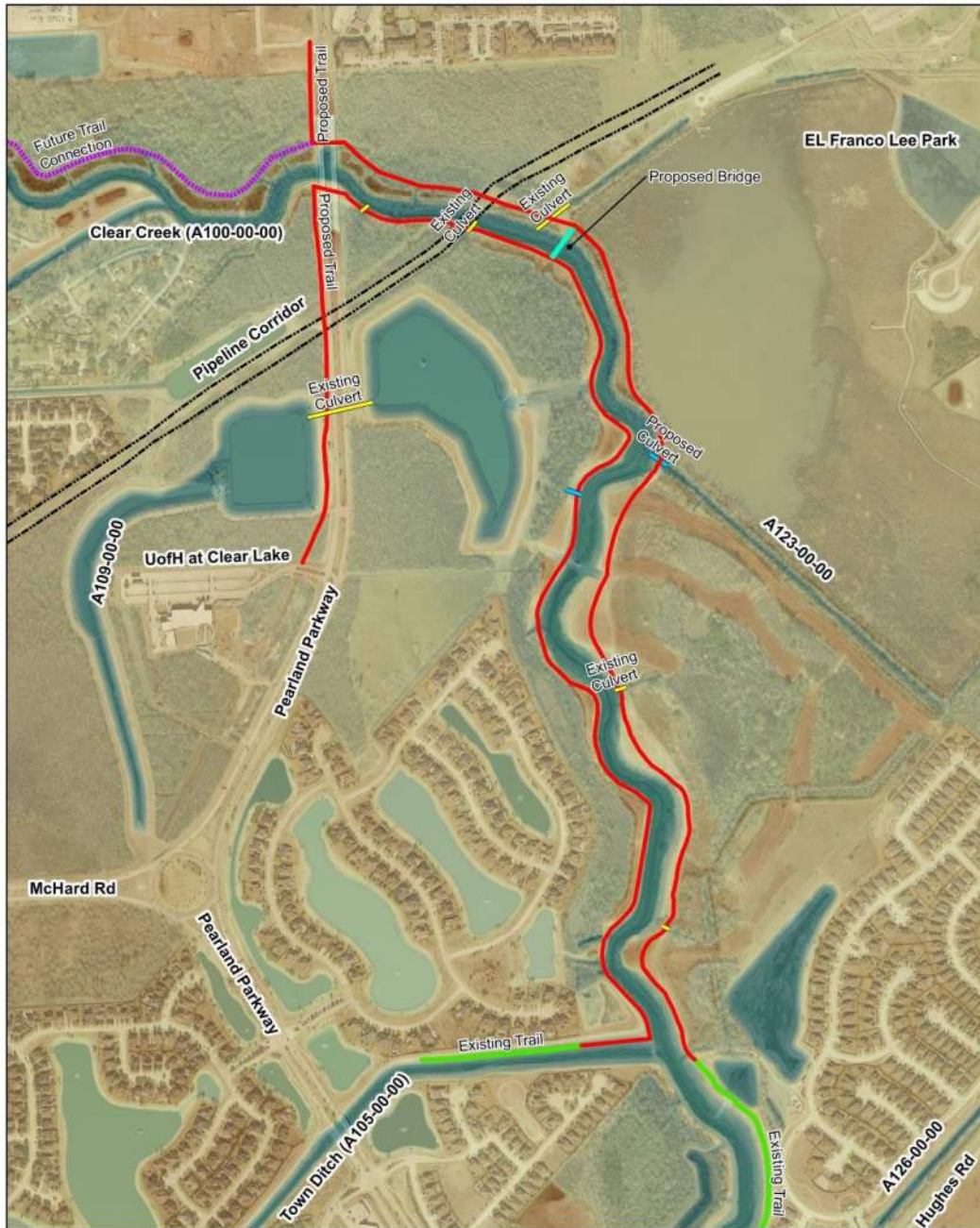
	Base Line	Current
Design Start	October-20	
Bid Start	April-22	
Construction Start	September-22	
Proposed Construction Completion	September-23	

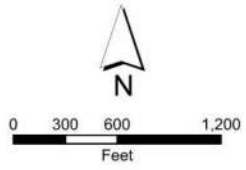
Rain Days: N/A

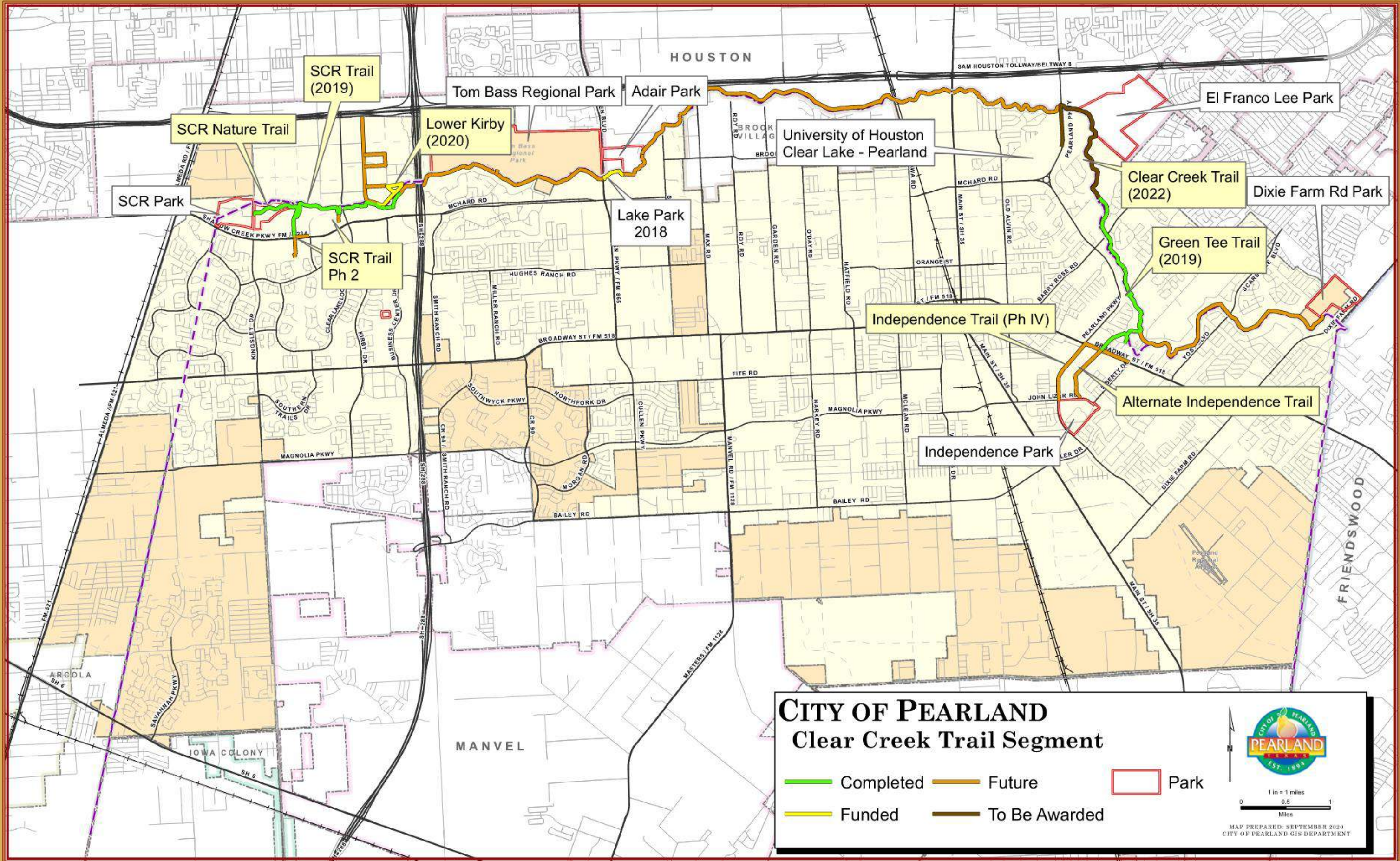
Recommendation:

At the September 14th City Council Meeting, Staff will recommend that Council award the contract for design to Gauge Engineering in the amount of \$618,096.91.

Location Map:

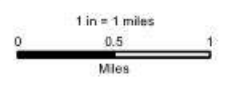


 <p>CITY OF PEARLAND TEXAS EST. 1894</p>	<p>LEGEND</p> <ul style="list-style-type: none"> — Proposed Trail - - - - Future Trail Connection — Existing Trail — Proposed Bridge — Proposed Culvert — Existing Culvert - - - - Pipeline Corridor <p>LIDAR 2018</p> <p>High : 63.423 Low : 18.275</p>	 <p>0 300 600 1,200 Feet</p>
<p>CLEAR CREEK TRAIL EXPANSION</p> <p>CITY OF PEARLAND</p>	 <p>Gauge ENGINEERING</p>	
<p>FIGURE 1 STUDY LOCATION</p>		



CITY OF PEARLAND Clear Creek Trail Segment

- Completed
- Funded
- Future
- To Be Awarded
- Park



MAP PREPARED: SEPTEMBER 2020
CITY OF PEARLAND GIS DEPARTMENT