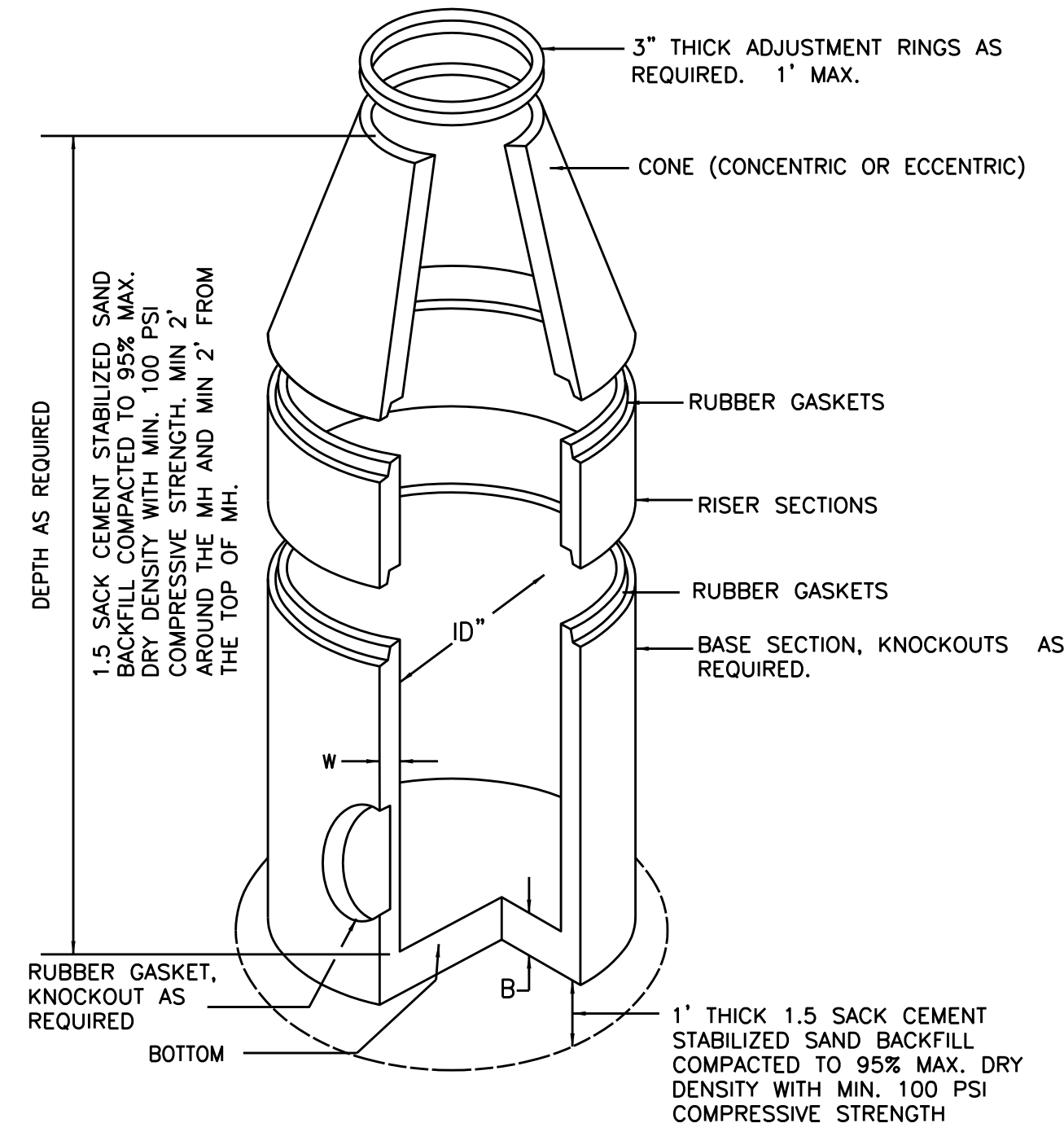


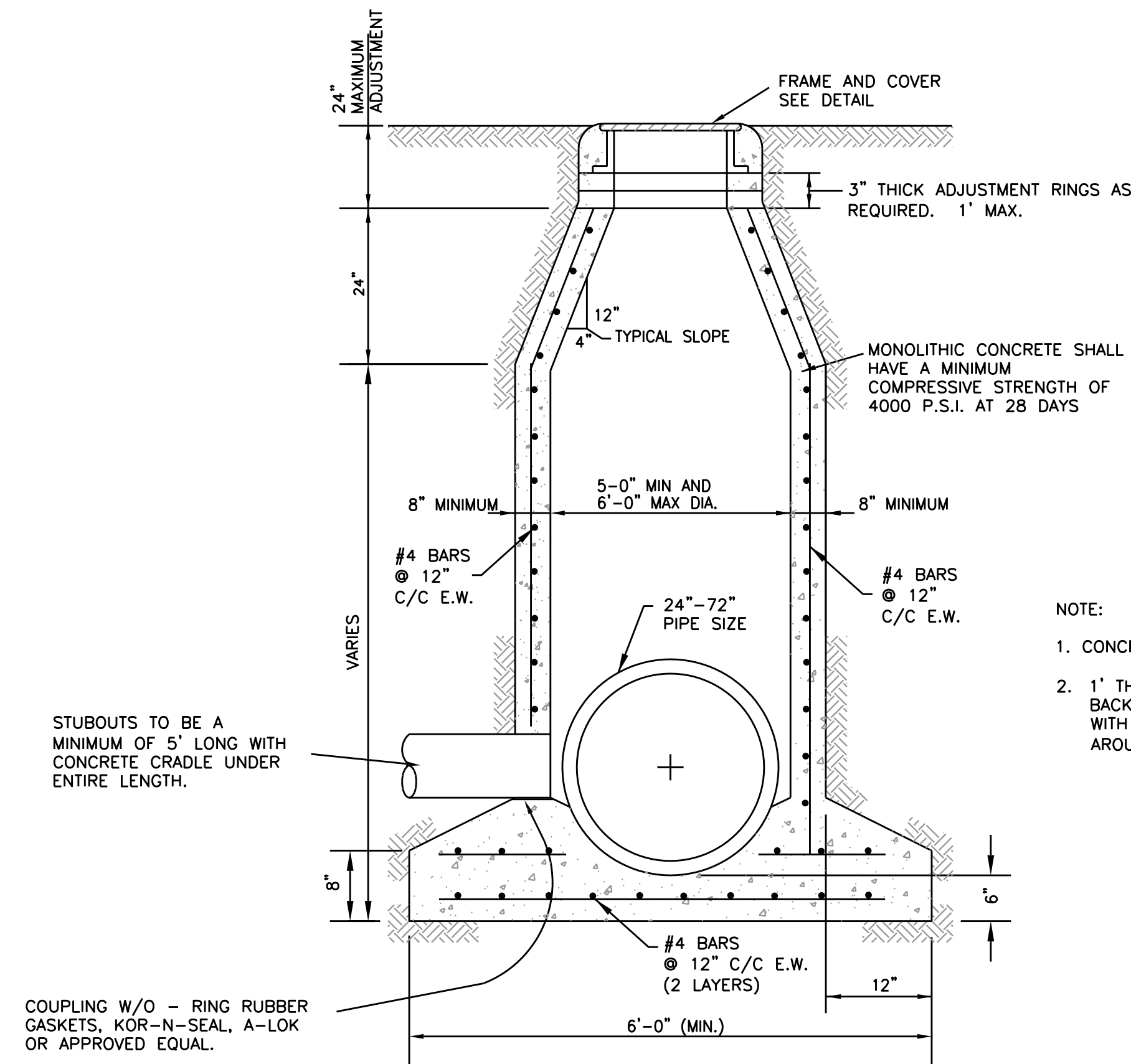
DIMENSIONS AND WEIGHTS			
I.D. SIZE (in)	W (in)	B (in)	RISER WT/LF (lb)
48	5	6	868
60	6	8	1300
72	7	8	1811
96	9	8	3090

NOTE:

1. CLASS 1 CONCRETE WITH A DESIGN STRENGTH OF 4000 PSI AT 28 DAYS. RATES FOR H-20 LOADING.
2. PRECAST CONCRETE MANHOLE CONFORMING TO ASTM C478. STRUCTURAL REINFORCEMENT CONFORMING TO ASTM 615A.
3. LIFTING INSERTS AS REQUIRED.
4. ALL JOINTS SHALL BE SEALED WITH APPROVED GASKET.
5. LARGER INSIDE DIAMETER MANHOLES SHALL BE REQUIRED IF LESS THAN 1' OF WALL SURFACE IS LEFT BETWEEN OPENINGS OR AS SPECIFIED BY ENGINEER.
6. ALL MANHOLES IN PAVED AREAS SHALL HAVE BLOCK OUT (SEE DRIVEWAY DETAIL SHEET).



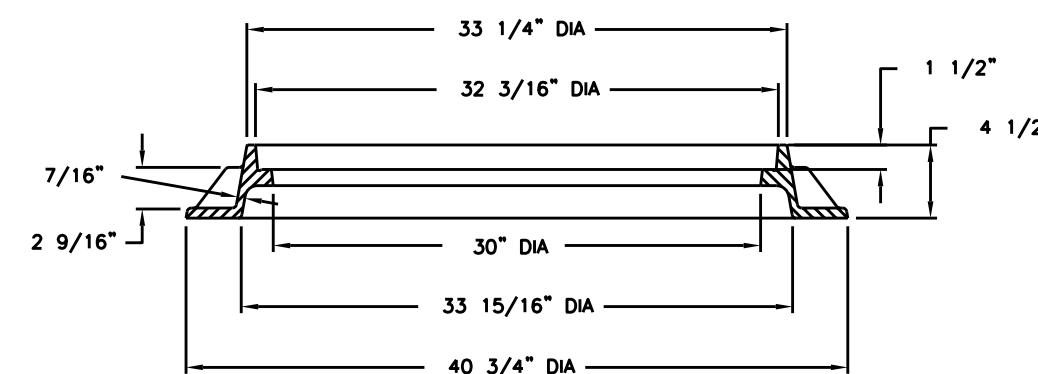
**1** TYPE 'C' PRECAST STORM SEWER MANHOLE



NOTE:

1. CONCRETE SHALL BE A MONOLITHIC POUR.
2. 1' THICK 1.5 SACK CEMENT STABILIZED SAND BACKFILL COMPACTED TO 95% MAX. DRY DENSITY WITH MIN. 100 PSI COMPRESSIVE STRENGTH AROUND MANHOLE COMPACTED IN 8" LIFTS.

**2** TYPE 'C' CAST-IN-PLACE STORM SEWER MANHOLE



NOTE:

1. MANHOLE FRAME AND COVER TO BE EAST JORDAN IRON WORKS' PATTERN, OR OTHER APPROVED EQUAL. WHERE SEWER IS LOCATED IN EASEMENTS, CONTRACTOR MAY USE LIGHTWEIGHT F AND C, APPROVED BY THE ENGINEER.
2. STAINLESS STEEL INFLOW PREVENTERS MADE BY KoLo, INC., OR APPROVED EQUAL, SHALL BE USED ON ALL SANITARY SEWER MANHOLES.
3. ALL MANHOLES IN OPEN DITCH AND ABOVE FINISHED GRADE SHALL HAVE HINGED FRAME AND COVER.
4. PRIVATE SANITARY STORM MANHOLES COVER SHALL HAVE THE LABEL "PRIVATE".

**3** MANHOLE COVER AND FRAME



NOTE:

1. ONLY CAST-IN-PLACE OR PRE-CAST MANHOLES SHALL BE USED.
2. NO BRICKS OF ANY KIND WILL BE ALLOWED IN CONSTRUCTION OF MANHOLES OR INLETS.
3. FOR ALL PRE-CAST AND POURED-IN-PLACE INLETS AND JUNCTION BOXES, CENTER DOUBLE-SEALING GASKET IN WALL AND GROUT COMPLETELY AROUND DUAL WALLPVC PIPE. GROUT SHALL BE SMOOTH AND FLUSH WITH INNER AND OUTER WALL WHEN ENTERING AT AN ANGLE TO THE WALL OR THROUGH THE CORNER OF AN INLET OR JUNCTION BOX, THE GASKET MAY BE OMITTED.
4. ALL CEMENT STABILIZED SAND BACKFILL SHALL CONFORM TO EDCM CHAPTER 10.

THIS DETAIL SHEET HAS BEEN PREPARED FOR USE ON STANDARD CITY OF PEARLAND PROJECTS. AN ENGINEER WHO INCORPORATES THE DETAILS ON THIS SHEET BECOMES RESPONSIBLE FOR ITS USE IN THE END PRODUCT IN ACCORDANCE WITH RULE 137.33 (b) AND (c) OF THE TEXAS STATE BOARD OF REGISTRATION FOR PROFESSIONAL ENGINEERS.



STANDARD DETAILS

STORM MANHOLE

Job No.:	Scale:	SHEET
Date: JAN 2020	HORZ: 1"=NONE	1
Dwn By: PRP	VERT: 1"=NONE	OF 1
Chkd By: RS	CAD FILE:	
	COP-STM MH	