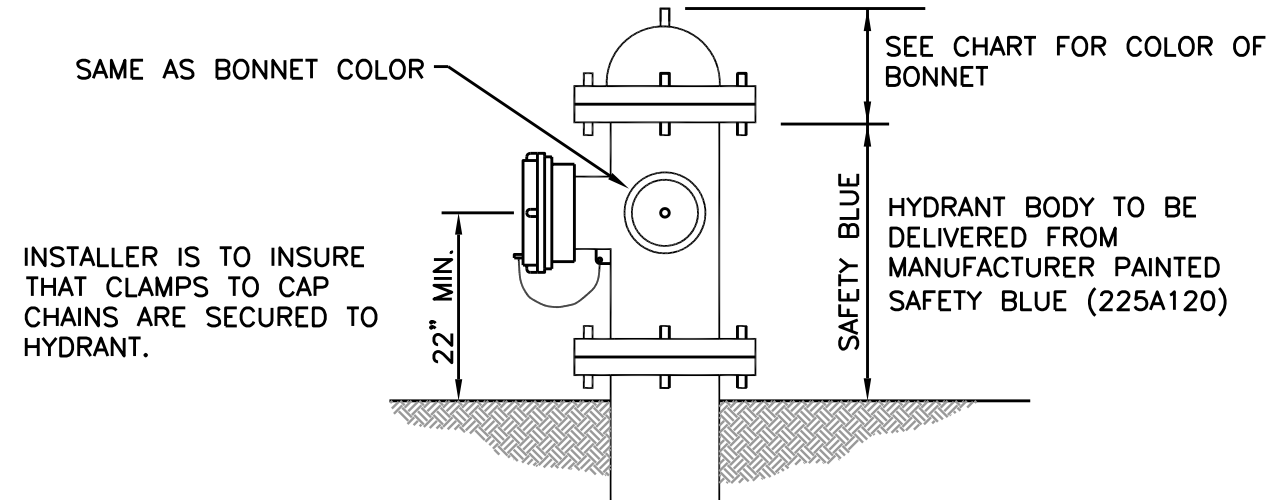


1
2 FIRE HYDRANT

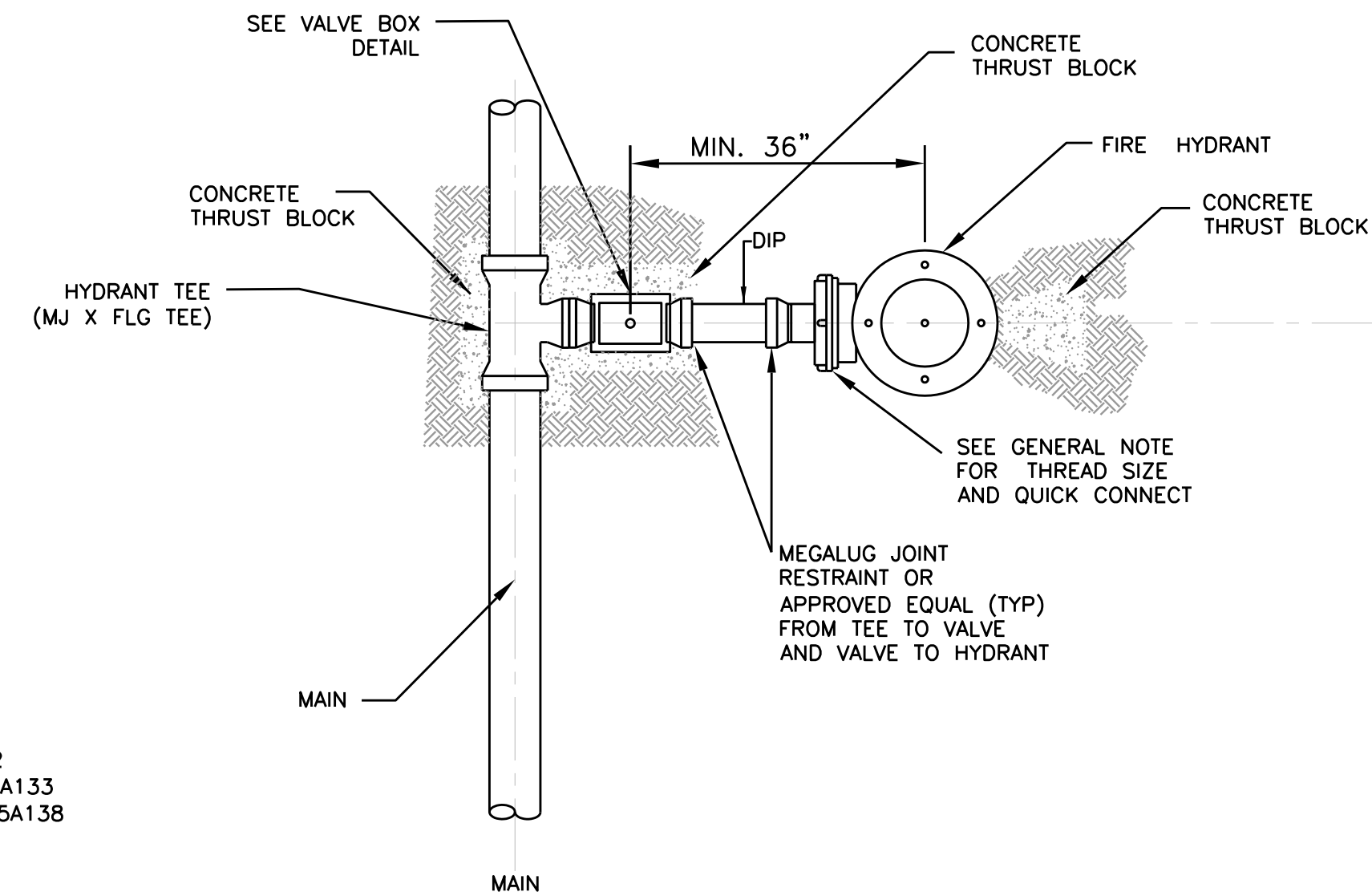
NOTE:
SHALL BE DUCTILE IRON PIPE. NO PVC IS ALLOWED



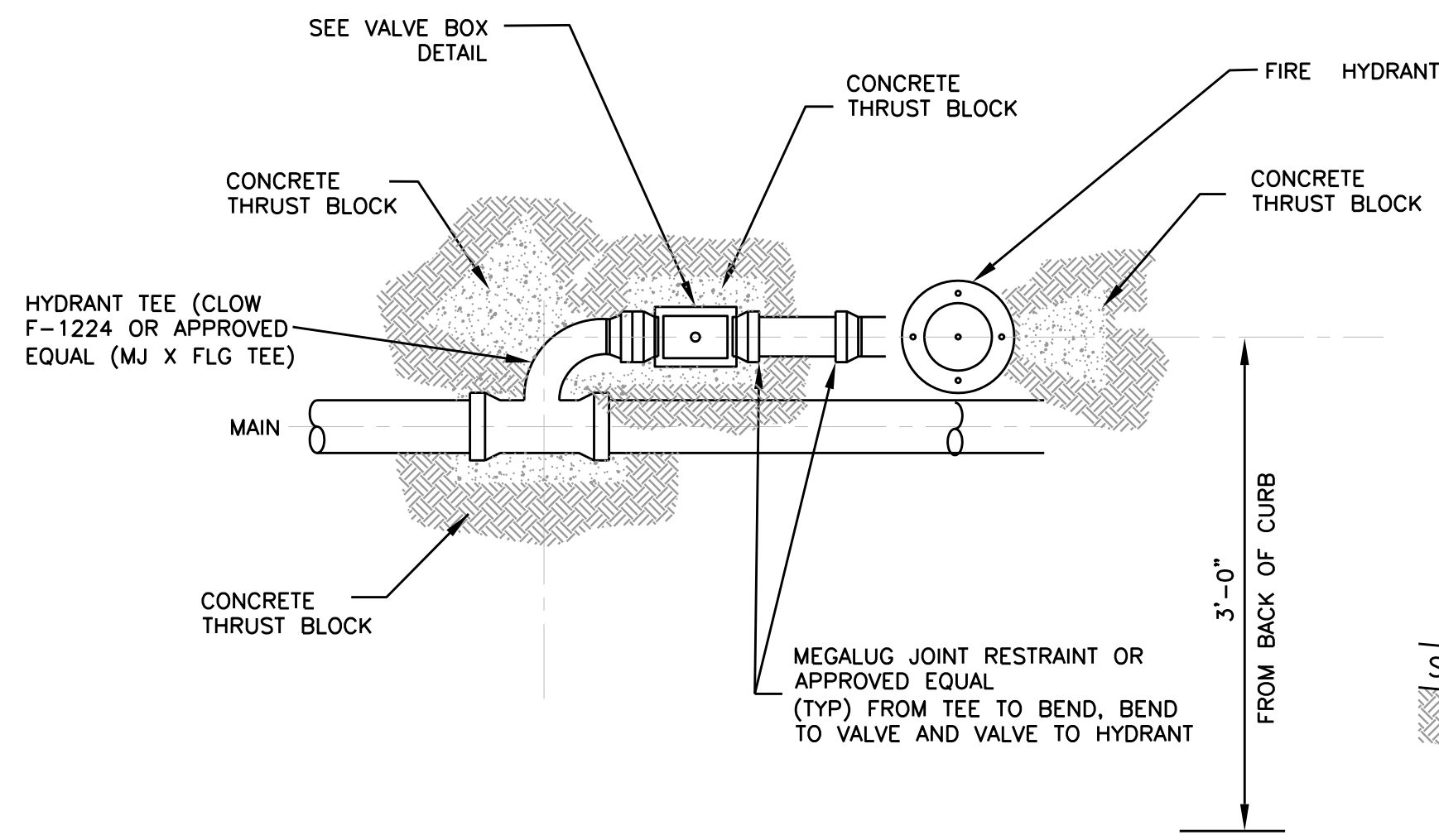
COLOR CODE
FIRE HYDRANT BARREL SAFETY BLUE CODE NO. 225A120
FIRE HYDRANT CAPS SAME AS BONNET COLOR

COLOR CODE (BONNETS AND CAPS)
MAIN SIZE
6\"/>

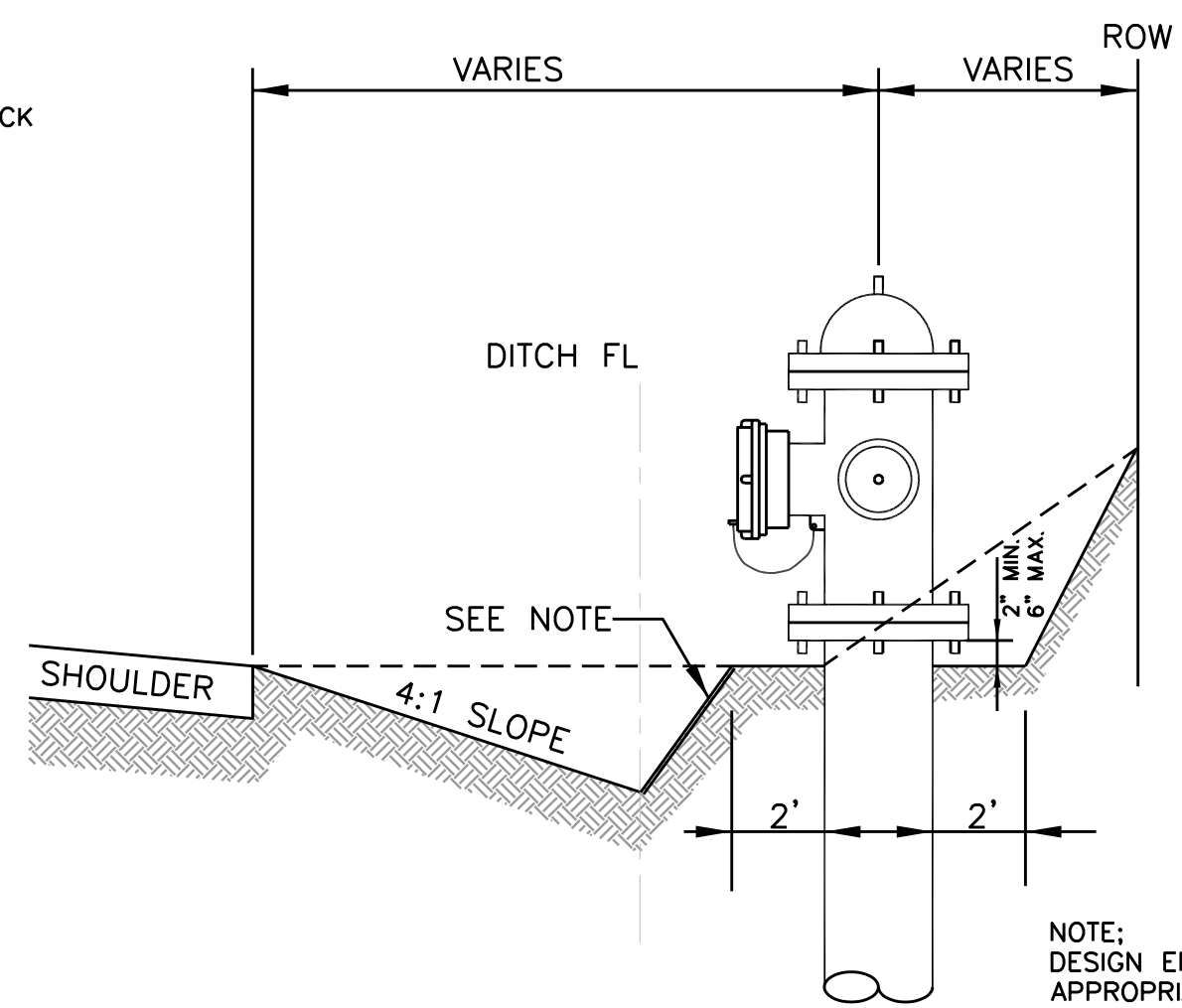
2
2 FIRE HYDRANT - COLOR CODE



3
2 FIRE HYDRANT - PLAN

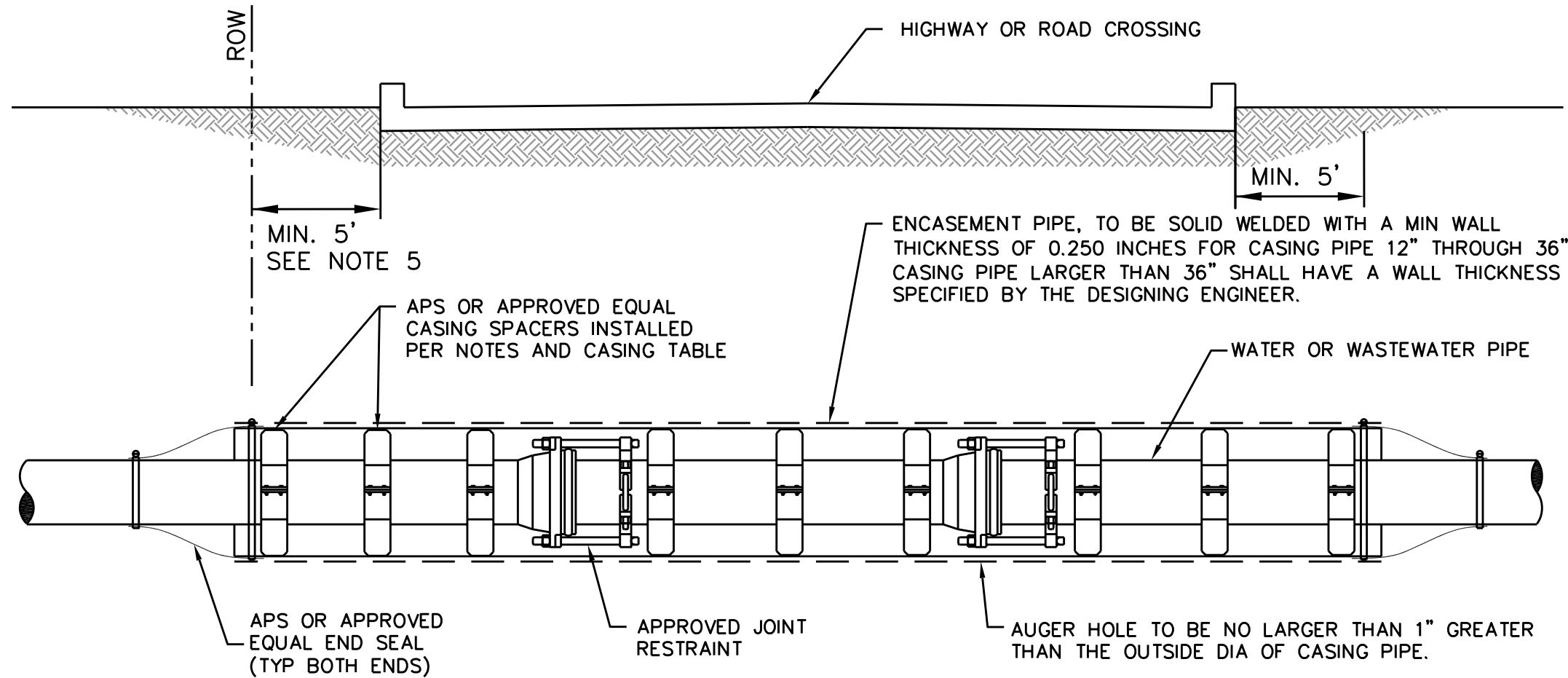


4
2 ALTERNATE FIRE HYDRANT - PLAN



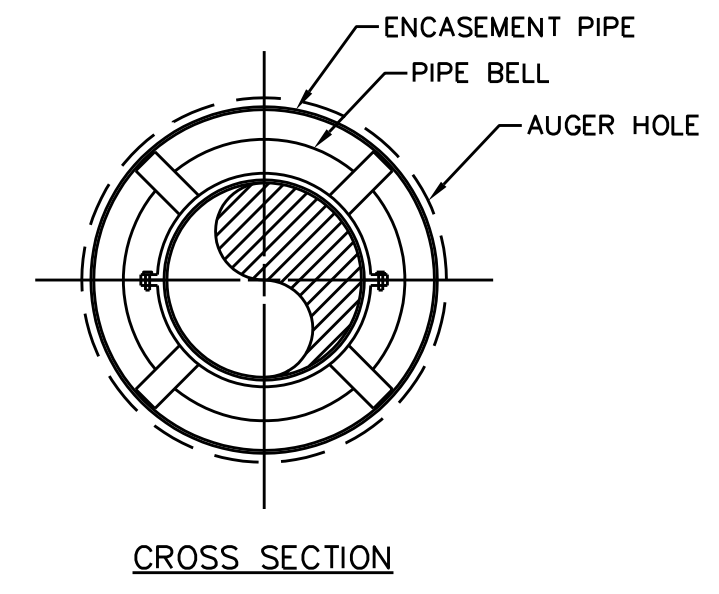
5
2 TYPICAL SECTION STREET WITHOUT CURB AND GUTTER

NOTE:
DESIGN ENGINEER TO RECOMMEND APPROPRIATE DESIGN WHICH MAY INCLUDE SLOPE NO STEEPER THAN 3:1 OR SLOPE PAVING OR VERTICAL WALL.



LONGITUDINAL SECTION

NOMINAL PIPE SIZE DIA IN INCHES	MIN CASING SIZE INSIDE DIA IN INCHES	MAX SKID SUPPORT SPACING IN FEET
4	12	4.7
6	12	6.3
8	16	7.4
10	18	8.5
12	20	9.6
15 & 16	22	11.0
18	26	12.0
20 & 21	30	12.0
24	33	12.0
27	36	12.0



CROSS SECTION

- NOTES:
- SPACERS FOR CARRIER PIPE SHALL BE STAINLESS STEEL, NEOPRENE OR APPROVED EQUAL AND SHALL BE INSTALLED TO CENTER CARRIER PIPE WITHIN CASING WITH A MAX TOLERANCE OF 1/2" BETWEEN RUNNER AND CASING INSIDE AS WELL AS PREVENT THE CARRIER PIPE FROM RESTING ON THE BELLS WITHIN THE CASING. SEE CASING TABLE FOR SPACER DISTANCE AND NUMBER OF SPACERS.
 - SPACERS TO BE PLACED A MIN OF 1' BACK FROM EACH JOINT THAT FALLS WITHIN CASING, A GREATER SET BACK MAY BE REQUIRED FOR LARGER PIPE. SEE CASING TABLE FOR ADDITIONAL INFO ON SPACING OF SUPPORTS.
 - WHEN INSTALLING GRAVITY PIPE WITH CASING CONTRACTOR SHALL TAKE INTO CONSIDERATION PIPE GRADE SO THAT THE SEWER PIPE MAINTAINS THE PROPER FALL.
 - JOINT RESTRAINTS ARE REQUIRED ON ALL JOINTS THAT FALL UNDER OR WITHIN 10' OF HIGHWAY CROSSINGS REGARDLESS OF PIPE MATERIAL, CASED OR NOT.
 - THE LENGTH OF CASING MAY VARY DEPENDING ON THE TYPE OF ROADWAY. THE CASING SHALL BE EXTENDED FROM ROW TO ROW FOR STATE HIGHWAYS, THOROUGHFARES, AND COLLECTOR STREETS.

- NOTES:
- THE FIRE HYDRANT SUPPLY LINE FROM PUBLIC WATER MAIN TO THE FIRE HYDRANT SHALL BE CONSTRUCTED OF DUCTILE IRON PIPE. PVC SHALL NO BE ALLOWED.
 - FIRE HYDRANT THREAD SIZE: PUMPER CONNECTION 4-492 SIZE=4.492".
 - PROVIDE "UNI-FLANGE" OR APPROVED EQUAL PIPE RESTRAINT AND CASING SYSTEM ON UNDERGROUND PRESSURE PIPE SYSTEMS.
 - FIRE HYDRANT ASSEMBLIES SHALL NORMALLY BE LOCATED THREE FEET BEHIND BACK OF CURB, DEFLECT WATERLINES AS NECESSARY TO MAINTAIN THREE FOOT CLEARANCE. REQUIRED ASSEMBLY SHALL INCLUDE ONE LINE SIZE BY SIX INCH TEE, ONE SIX INCH GATE VALVE AND BOX, ONE FIRE HYDRANT AND SIX INCH LEAD PIPING AND TIE BACKS.
 - ALL CONCRETE THRUST BLOCKING SHALL BE PLACED TO FORM A SOLID CONNECTION BETWEEN FITTINGS, VALVES, AND FIRE HYDRANTS AND UNDISTURBED EARTH. CONCRETE FOR THRUST BLOCKING SHALL HAVE A MINIMUM OF 2500 P.S.I. COMPRESSIVE STRENGTH AT 28 DAYS.
 - INSTALL CONCRETE BLOCK BENEATH FIRE HYDRANTS BEFORE PLACING CONCRETE THRUST BLOCKING TO INSURE THAT FIRE HYDRANTS ARE INSTALLED LEVEL.
 - ALL FIRE HYDRANTS AND VALVE BOXES ARE TO BE ADJUSTED TO FINISH GRADE AFTER PAVING IS COMPLETE.
 - ALL FIRE HYDRANTS ARE TO BE EQUIPPED WITH HYDRA-STORZ QUICK CONNECT HYDRANT SYSTEM (1/4 X 5" BASE) WITH DEBRIS CAP. MANUFACTURED BY HYDRA-SHIELD, INC. OR APPROVED EQUAL. DEBRIS CAP IS TO BE TETHERED WITH A 12" STAINLESS STEEL CABLE, UTILIZING THE EYELET ON THE FIRE HYDRANT AND THE DEBRIS CAP.
 - CONTRACTOR SHALL NOTIFY CITY ENGINEER 48 HOURS BEFORE START OF CONSTRUCTION.
 - ALL FIRE HYDRANT RESTRAINTS TO BE MJ FITTING.
 - ALL BONNETS AND CAP SHALL BE FACTORY PRIMED

PLEASE READ THE APPLICABLE COP SPECIFICATION SECTIONS FOR DETAILED INFORMATION.
PLEASE REFERENCE THE COP APPROVED PRODUCT LIST FOR APPLICABLE PRODUCT INFORMATION.
THIS DETAIL SHEET HAS BEEN PREPARED FOR USE ON STANDARD CITY OF PEARLAND PROJECTS. AN ENGINEER WHO INCORPORATES THE DETAILS ON THIS SHEET BECOMES RESPONSIBLE FOR ITS USE IN THE END PRODUCT IN ACCORDANCE WITH RULE 137.33 (b) AND (c) OF THE TEXAS STATE BOARD OF REGISTRATION FOR PROFESSIONAL ENGINEERS.



City of Pearland, Texas

STANDARD DETAILS

WATER

Job No.:	Scale:	SHEET
Date: JAN 2020	HORIZ: 1"=NONE	2
Dwn By: PRP	VERT: 1"=NONE	OF 2
Chkd By: RS	CAD FILE:	
	COP-WTR2	