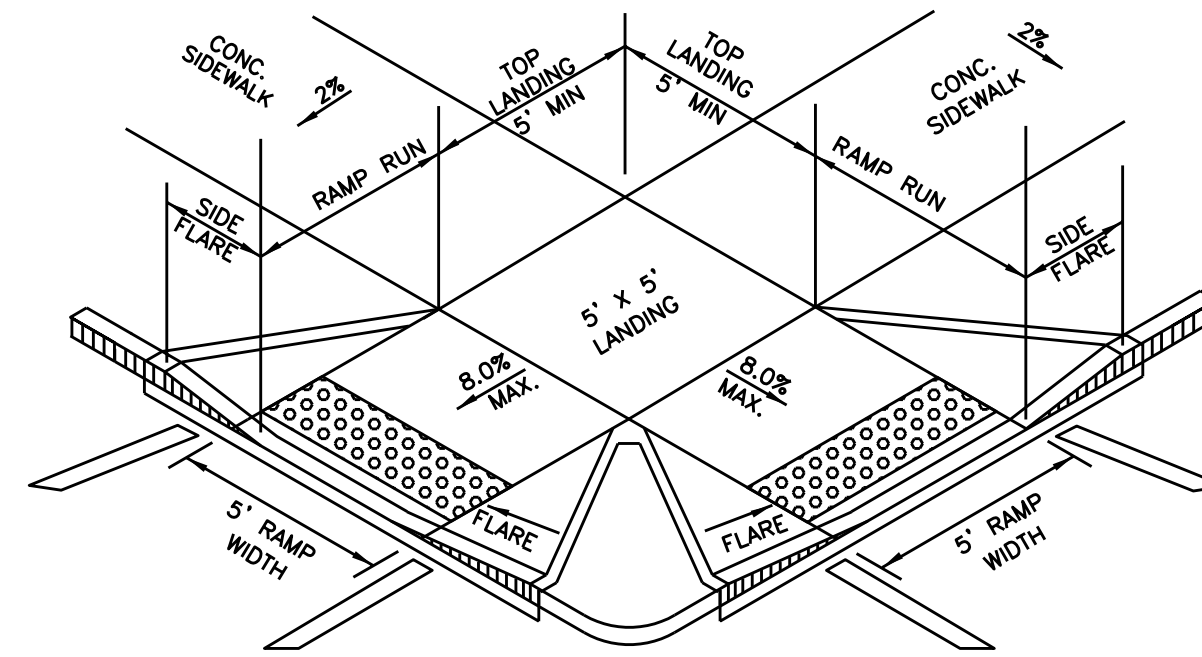


TYPICAL PLACEMENT OF DETECTABLE WARNING SURFACE ON SLOPING RAMP RUN.

NOTES:

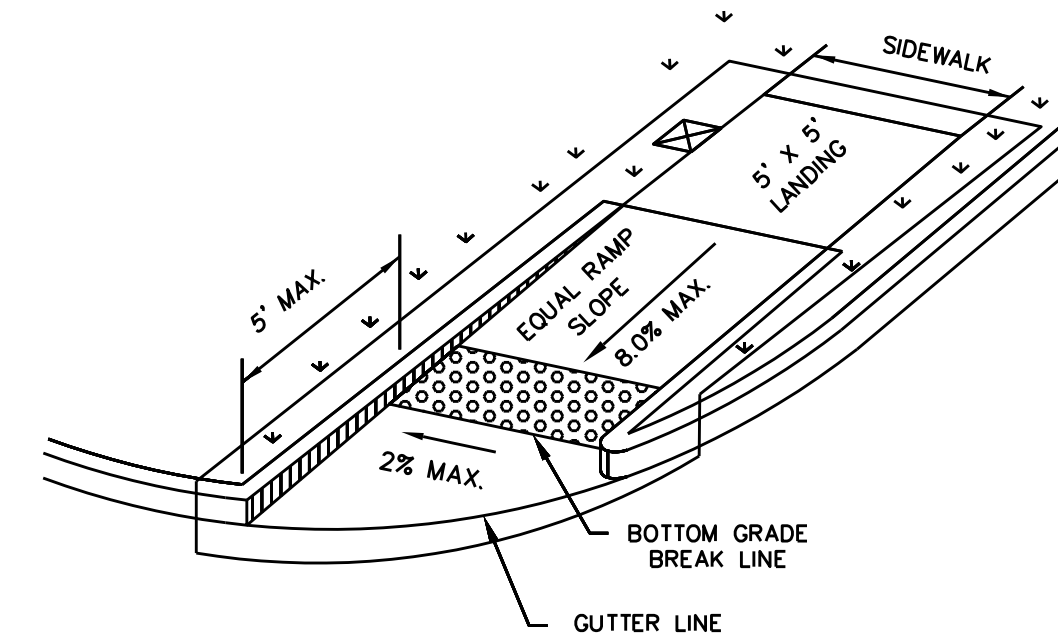
1. CURB RAMPS MUST CONTAIN A DETECTABLE WARNING SURFACE THAT CONSISTS OF RAISED TRUNCATED DOMES COMPLYING WITH SECTION 4.29 OF THE TEXAS ACCESSIBILITY STANDARDS (TAS). THE SURFACE MUST CONTRAST VISUALLY WITH ADJOINING SURFACES, INCLUDING SIDE FLARES. FURNISH DARK RED DETECTABLE WARNING SURFACE ADJACENT TO UNCOLORED CONCRETE, INCLUDING SIDE FLARES.
2. DETECTABLE WARNING SURFACES MUST BE SLIP RESISTANT AND NOT ALLOW WATER TO ACCUMULATE.
3. ALIGN TRUNCATED DOMES IN THE DIRECTION OF PEDESTRIAN TRAVEL WHEN ENTERING THE STREET.
4. DETECTABLE WARNING SURFACES SHALL BE A MINIMUM OF 24" IN DEPTH IN THE DIRECTION OF PEDESTRIAN TRAVEL, AND EXTEND THE FULL WIDTH OF THE CURB RAMP OR OTHER HAZARDOUS VEHICULAR AREA.
5. THE ACCEPTABLE LIST OF QUALIFIED DETECTABLE WARNING MATERIALS FOR THE CITY OF PEARLAND INCLUDES ARMOR-TILE CAST IN PLACE TILE, CAST-IN-PLACE COMPOSITE TILES BY ADA SOLUTIONS, INC AND ANY OTHER PRODUCT THAT IS DEEMED TO BE EQUAL TO OR BETTER THAN THE ABOVE REFERENCED PRODUCTS BY THE CITY ENGINEER. (DETECTABLE WARNING PAVERS ARE NOT PERMITTED.)
6. DETECTABLE WARNING SURFACES SHALL BE LOCATED SO THAT THE EDGE NEAREST THE CURB LINE IS A MINIMUM OF 6" AND A MAXIMUM OF 10" FROM THE EXTENSION OF THE FACE OF CURB.
7. CURB RAMPS SHALL MEET THE CURRENT ADA AND TEXAS ACCESSIBILITY STANDARDS FOR SLOPE AND DETECTABLE SURFACES.



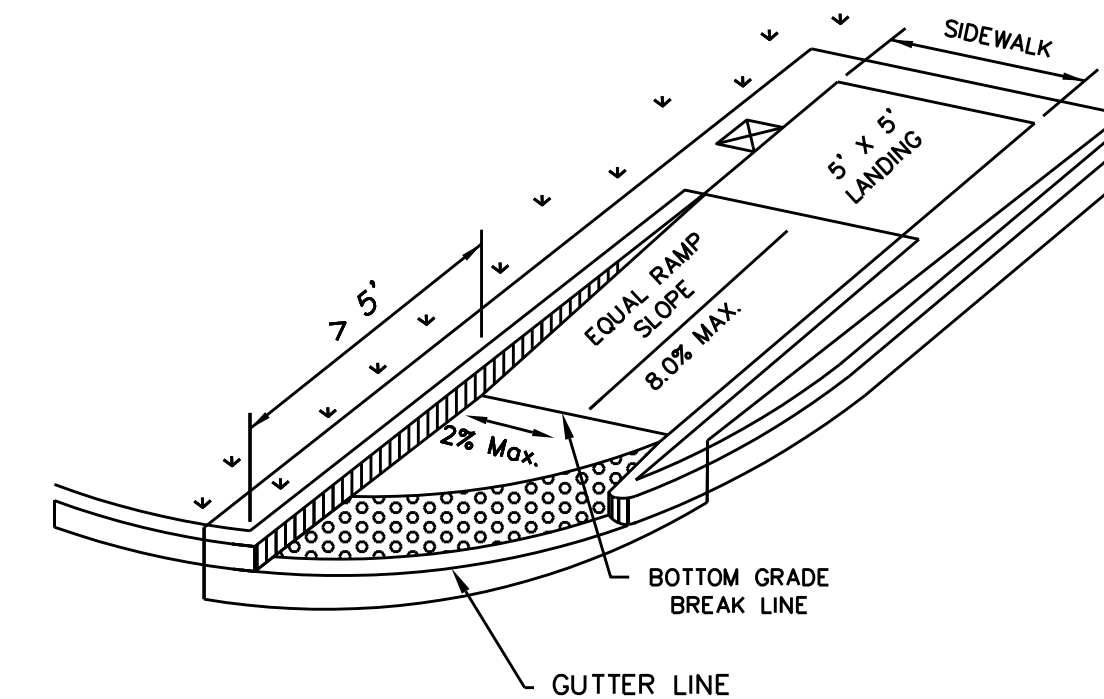
TRAVERSABLE SLOPE

NOTES:

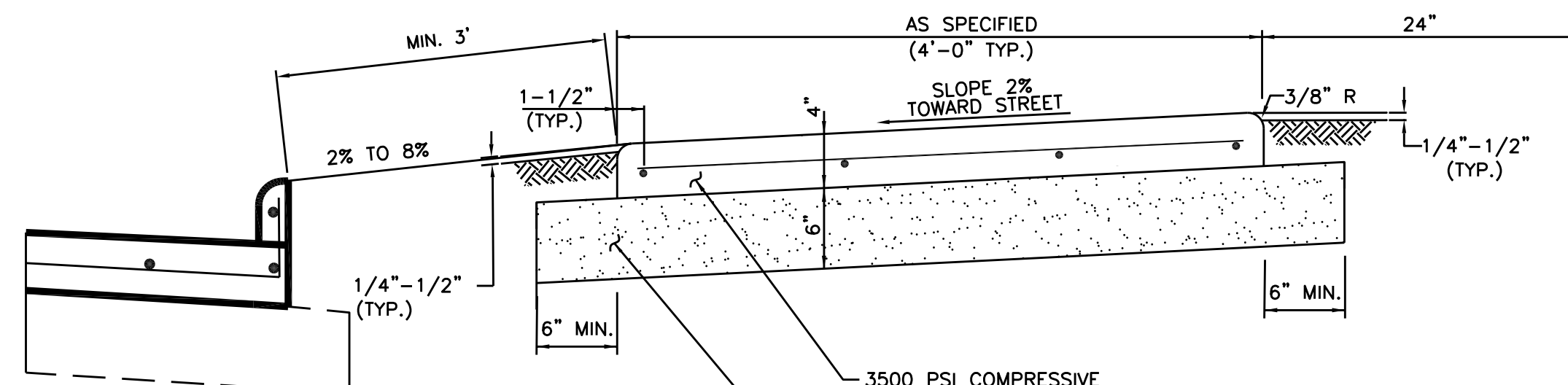
1. ALL SLOPES ARE MAXIMUM ALLOWABLE. THE LEAST POSSIBLE SLOPE THAT WILL STILL DRAIN PROPERLY SHOULD BE USED. ADJUST CURB RAMP LENGTH OR GRADE OF APPROACH SIDEWALKS AS DIRECTED.
2. LANDINGS SHALL BE 5' X 5' MINIMUM WITH A MAXIMUM 2% SLOPE IN ANY DIRECTION.
3. ADDITIONAL INFORMATION ON CURB RAMP LOCATION, DESIGN, LIGHT REFLECTIVE VALUE AND TEXTURE MAY BE FOUND IN THE CURRENT EDITION OF THE TEXAS ACCESSIBILITY STANDARDS (TAS) AND 16 TAC 68.102.
4. SEPARATE CURB RAMP AND LANDINGS FROM ADJACENT SIDEWALK AND ANY OTHER ELEMENTS WITH AN EXPANSION JOINT UNLESS OTHERWISE DIRECTED BY THE ENGINEER.
5. PROVIDE A SMOOTH TRANSITION WHERE THE CURB RAMPS CONNECT TO THE STREET.
6. CURB RAMPS SHALL MEET THE CURRENT ADA AND TEXAS ACCESSIBILITY STANDARDS FOR SLOPE AND DETECTABLE SURFACES.
7. CROSS SLOPE NOT TO EXCEED 2% ON ANY PORTION OF RAMP, TURNING SPACE OR TRANSITION TO STREET.



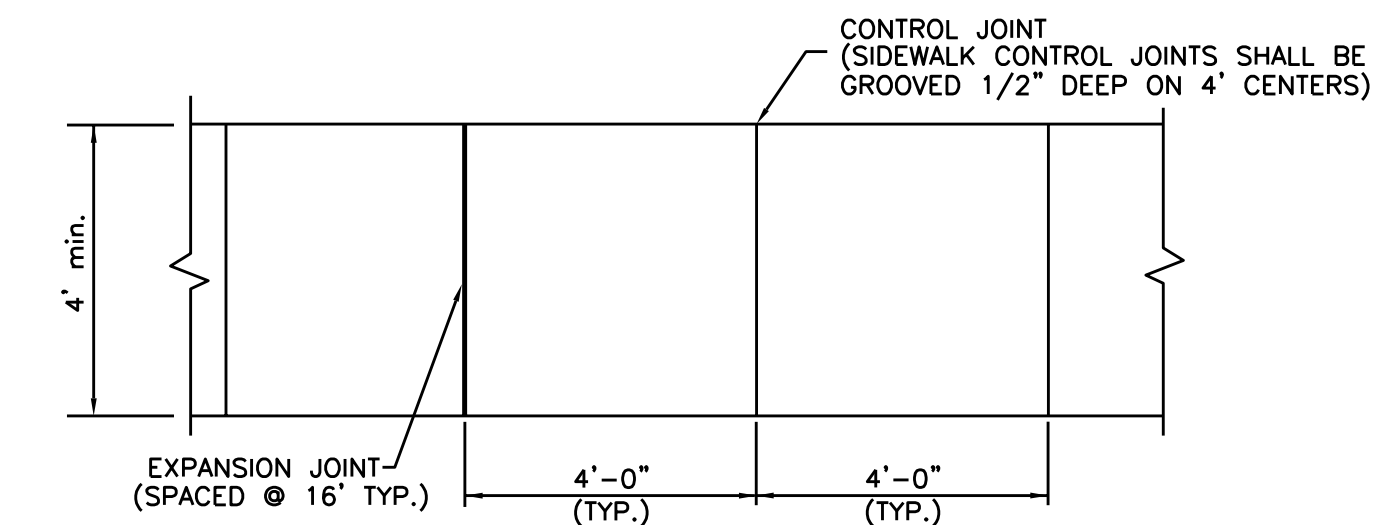
(SIDEWALK SET BACK FROM CURB)



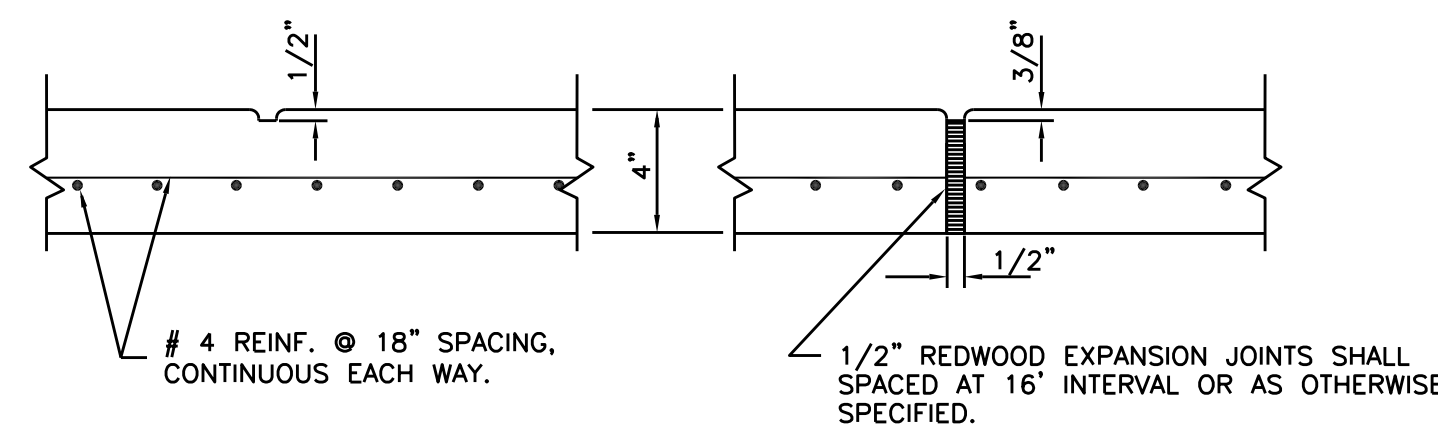
1 CURB RAMP



SECTION



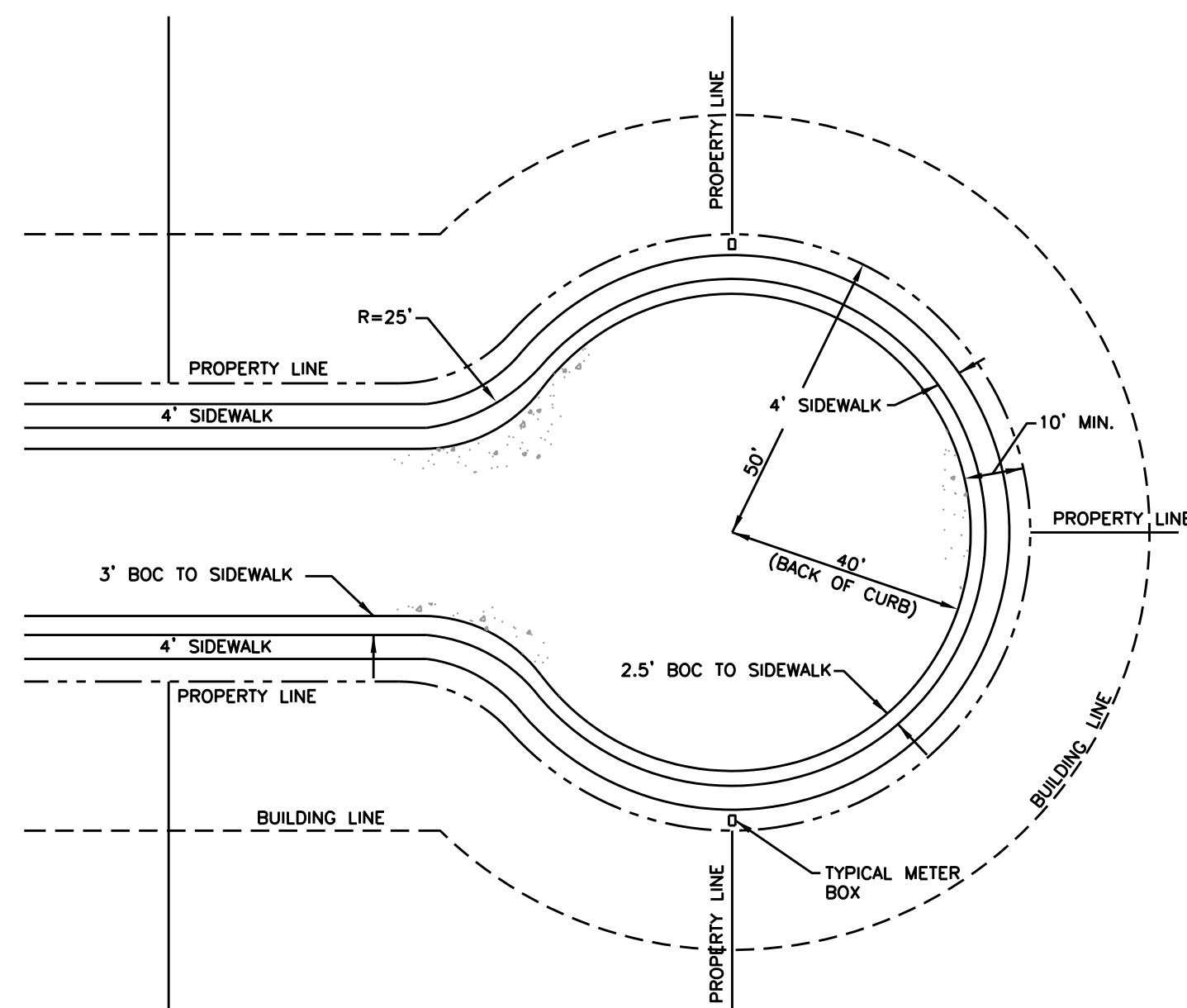
PLAN



CONTROL JOINT

EXPANSION JOINT

3 CONCRETE SIDEWALK



2 CUL-DE-SAC SIDEWALK

NOTES:

1. ALL EDGES SHALL BE ROUNDED WITH 3/8" RADIUS.
2. CONTROL JOINTS SHALL BE SPACED AT INTERVALS SAME AS WIDTH OF SIDEWALK.
3. CONTROL JOINTS SHALL BE 1/2" DEEP AND TROWEL EDGE.
4. 1/2" EXPANSION MATERIAL REQUIRED WHERE SIDEWALKS ABUT BUILDINGS, CURBS, DRIVEWAYS, OR EXISTING SIDEWALKS.
5. EXPANSION JOINTS SHALL BE SPACED AT 16 FT. INTERVALS TYPICALLY.
6. WHERE NEW SIDEWALK IS PLACED AGAINST EXISTING SIDEWALK, SAWCUT EXISTING SIDEWALK FULL DEPTH TO AN EVEN STRAIGHT LINE PRIOR TO INSTALLATION OF THE NEW SIDEWALK.
7. ALL NEW SIDEWALK SHALL BE DOWELED INTO ADJACENT CONCRETE STRUCTURES.
8. PASSING ZONES MAY BE REQUIRED FOR SIDEWALKS <5' BASED ON REQUIREMENT BY TEXAS DEPT. OF LICENSING AND REGULATION (TDLR) SEC. 403.5.3.

NOTE:

1. ALL STREET LIGHTS ARE TO BE INSTALLED WITHIN ONE YEAR AFTER ACCEPTANCE OF SUBDIVISION BY CITY COUNCIL.
2. ALL INTERIOR STREETS WITHIN THE SUBDIVISION MAY HAVE SIDEWALKS INSTALLED BY THE HOMEBUILDER. THE SIDEWALKS ON PERIMETER STREETS SHALL BE INSTALLED BY THE DEVELOPER. SIDEWALKS ON COLLECTOR AND THOROUGHFARE STREETS WILL BE A MINIMUM OF 6 FEET IN WIDTH.
3. MIN. WIDTH OF SIDEWALK FOR LOCAL STREET IS 4' AND 6' FOR COLLECTOR AND THOROUGHFARE ROADWAY.

THIS DETAIL SHEET HAS BEEN PREPARED FOR USE ON STANDARD CITY OF PEARLAND PROJECTS. AN ENGINEER WHO INCORPORATES THE DETAILS ON THIS SHEET BECOMES RESPONSIBLE FOR ITS USE IN THE END PRODUCT IN ACCORDANCE WITH RULE 137.33 (b) AND (c) OF THE TEXAS STATE BOARD OF REGISTRATION FOR PROFESSIONAL ENGINEERS.



City of Pearland, Texas

STANDARD DETAILS

SIDEWALK DETAIL

Job No.:	Scale:	SHEET
Date: JAN 2020	HORZ: 1"=NONE	1
Dwn By: PRP	VERT: 1"=NONE	OF 1
Chkd By: RS	CAD FILE:	
	COP-SW.dwg	