

11/14/2019
 To: Mayor and City
 Council members

Much-anticipated large trail connection between existing areas, 80% Fed funding, moving along and readying for January 2020 completion. Clay

Green Tee Terrace Bike and Pedestrian Trail



Scope: The Green Tee Terrace Trail project is a 10-ft wide hike and bike trail along an alignment defined by Clear Creek from a tie-in point approximately 1,500 ft. south of Hughes Road through Riverstone Ranch Development to just east of Broadway (FM 518). The project includes benches, bike racks, trail signage, trash receptacles, water fountains, shade structures, and a pedestrian bridge over Clear Creek.

Justification: The Parks & Recreation Master Plan identified the need to create hike and bike trails as a priority during acquisition and development. This project is included in the 2013-2014 TIP and will be 80% federally funded.

Project Manager: Jameson Appel

Construction Manager: Freese and Nichols

Designer: RPS, Group

Contractor: Tandem Services, LLC

Budget Info:



Funding Sources	Series	To Date	Future	Total Budget
Certificates of Obligation	2017	100,000		100,000
Certificates of Obligation	2018	1,085,168		-
Certificates of Obligation				-
Cash		20,487		20,487
W/S Revenue Bonds				-
Other Funding Source (Developer)		200,815		200,815
Other Funding Sources (Fund Balance)		64,668		
Other Funding Sources (Park Zone)		217,430		217,430
Other Funding Sources (TIP)		3,275,150		3,275,150
Total Funding Sources		4,963,718	-	4,963,718

Expenditures	To Date	Future	Total
PER			-
Land	504		504
Design	540,286		540,286
Construction	2,500,794	40,422	2,541,216
Construction Management/Inspection	164,401		164,401
Construction Materials Testing			-
FF&E			-
Total Expenditures	3,205,985	40,422	3,246,407

Project Balance/Contingency			1,717,311
------------------------------------	--	--	------------------

Schedule Info:

	<i>Base Line</i>	<i>Current</i>
<i>Design Start</i>	May-16	January-17
<i>Bid Start</i>	June-18	August-18
<i>Construction Start</i>	November-18	June-19
<i>Proposed Construction Completion</i>	December-19	January-20

Rain Days: 36

Highlights: The NTP for this construction project was issued June 24, 2019

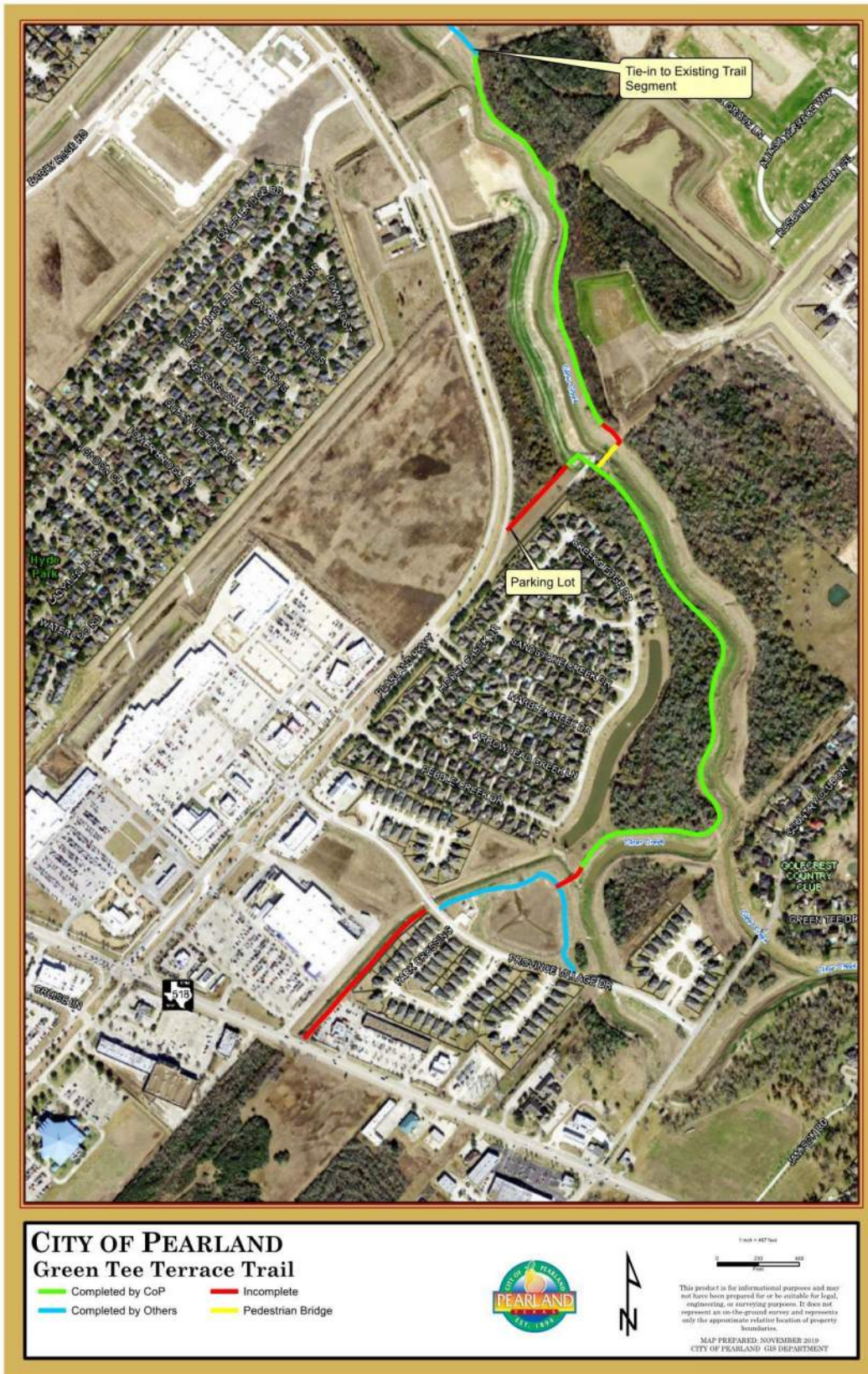
- 3,000 LF of trail pavement poured on Brazoria County section from the connection point with the Pearland Parkway segment to drainage ditch outfall into Clear Creek.
- 2,225 LF of Trail pavement poured on Harris County section, 175 LF remaining.
- Drill shafts for bridge bents constructed week of 10/1. Two 48-inch shafts at 76-foot depth and four 36-inch shafts at a depth of 60 feet.
- Abutment 1 and 3 along with Bent 2 formed and poured week of 10/18.
- Bridge arrived in five 50-foot segments and was assembled onsite week of 10/25. (temporary delay in setting the bridge due to inclement weather)
- 11/5 pedestrian bridge was set in place by coordinating 350-ton and 500-ton cranes on either side of Clear Creek.
- Project cost expended to date 66.8%, Project time expended to date 68.8%. (As of 11/6)

On-going/planned progress: (2-3 week look ahead)

- Construct 1,100 LF of trail in Brazoria County (adjacent to Lowes), work includes installation of six 6'x6' storm boxes at drainage ditch crossing for connection of the 10' trail to the trail built by the developer.
- Pour remaining 175 LF in Harris County to complete trail work.
- Construction of parking lot and driveway located off of Pearland Parkway and 600 feet of trail to bridge approach.
- Pour bridge decking.
 - The four bulleted items above will complete all paving work.
- Pending weather, substantial completion date January 5th, 2020.

Previous Memos: 09/26/16, 03/09/17, 11/08/17, 03/27/18, 05/24/18, 11/29/18, 09/12/19

Complete/Incomplete (included in this project) trail portions.



Construction Photos:

Brazoria County Portion of Trail, formwork behind Clear Creek Park Subdivision.



Brazoria County Portion of Trail, concrete pour behind Clear Creek Park Subdivision.



Tying steel for 36-inch drill shaft.



Placing 36-inch drill shaft steel for abutment one.



Construction of bent 2.



Construction of abutment one.



Placing bridge (1 of 2)



Placing bridge (2 of 2)



Final drop (less than $\frac{1}{4}$ in tolerance to spare)



Drone photography

