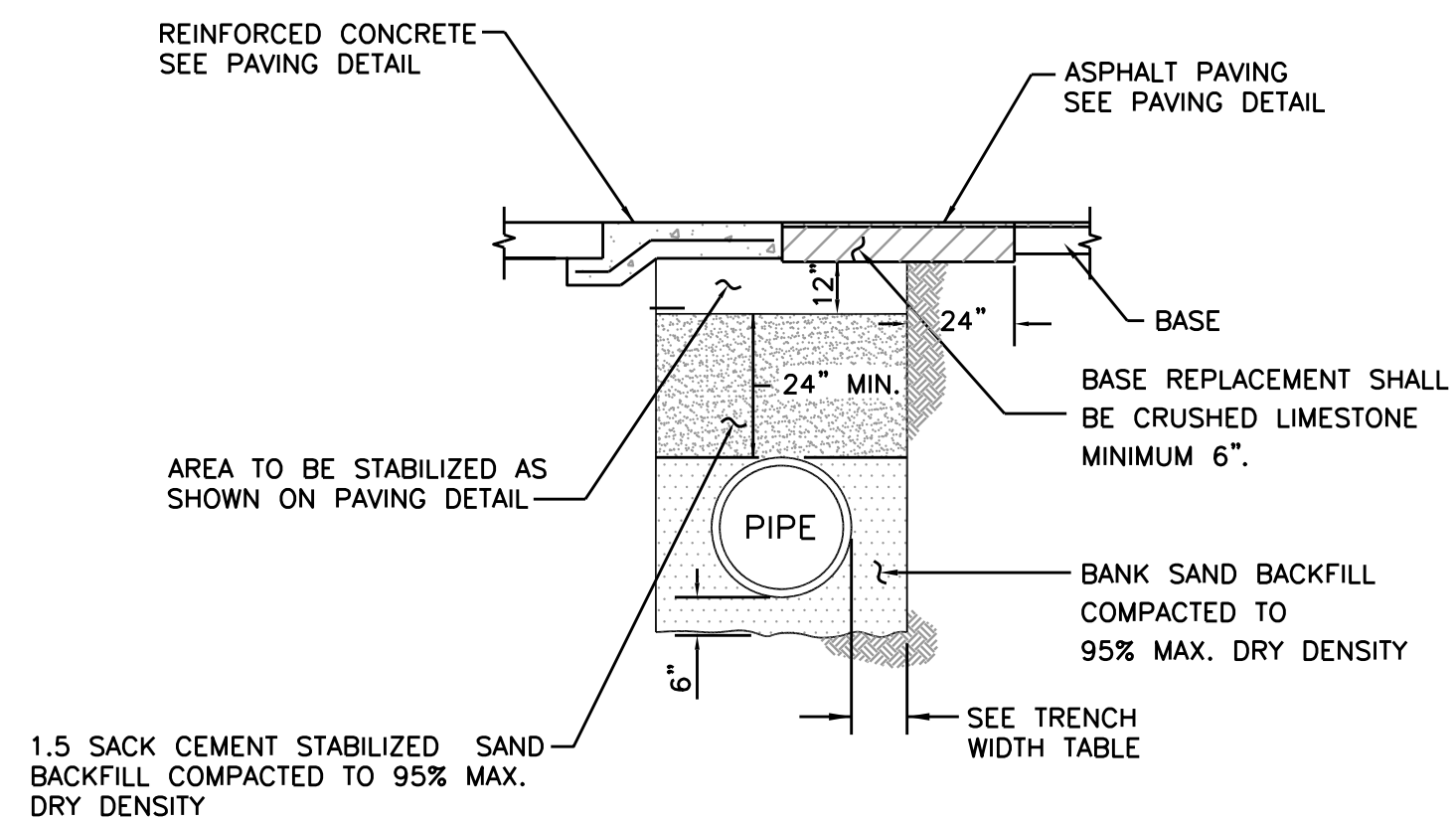
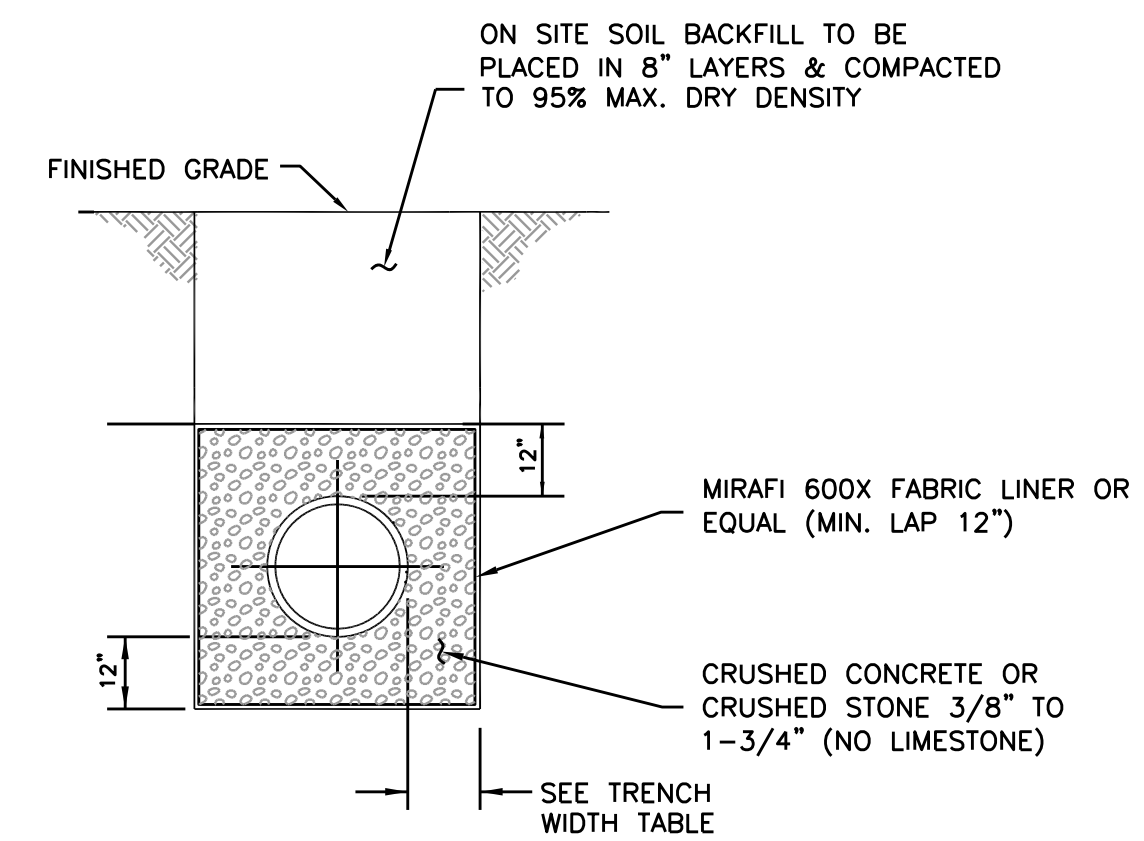


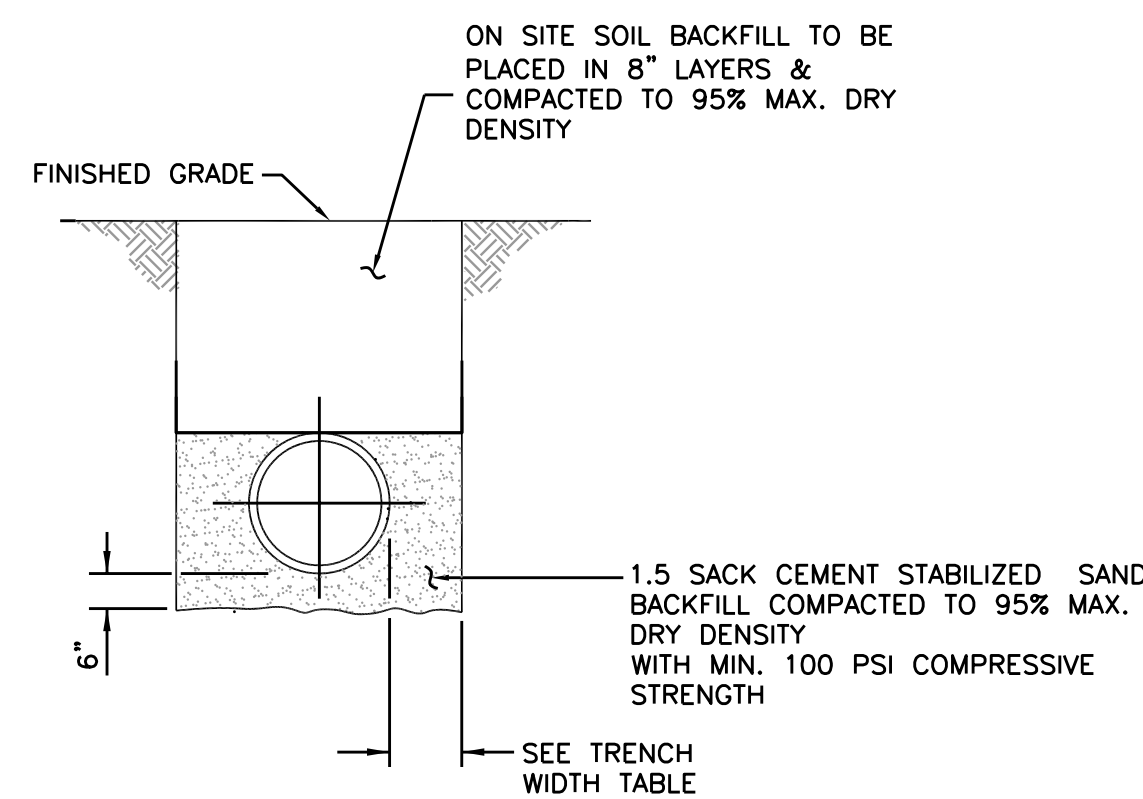
1
3 TRENCH SECTION FOR GRAVITY SEWER UNDER PAVEMENT



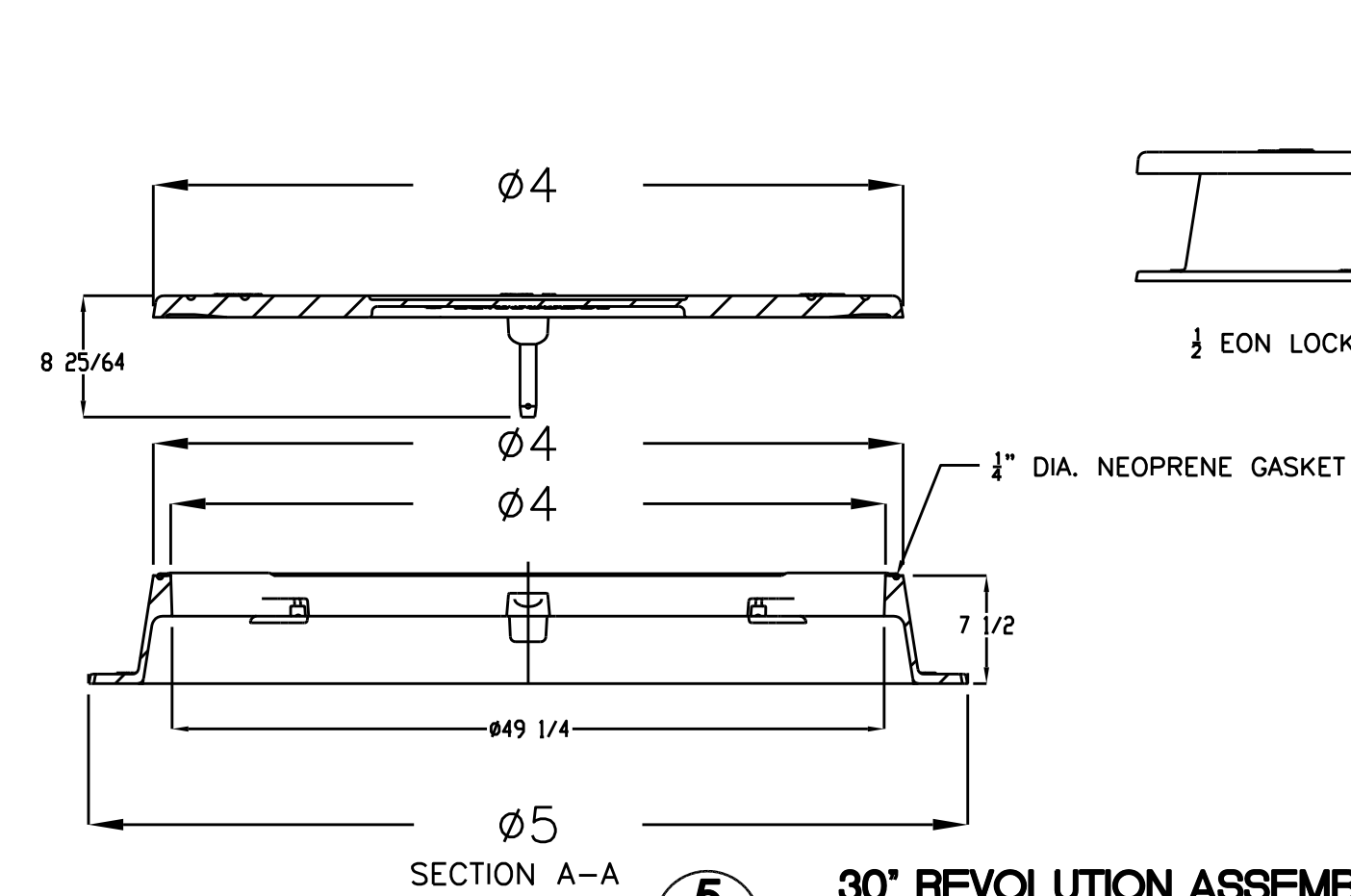
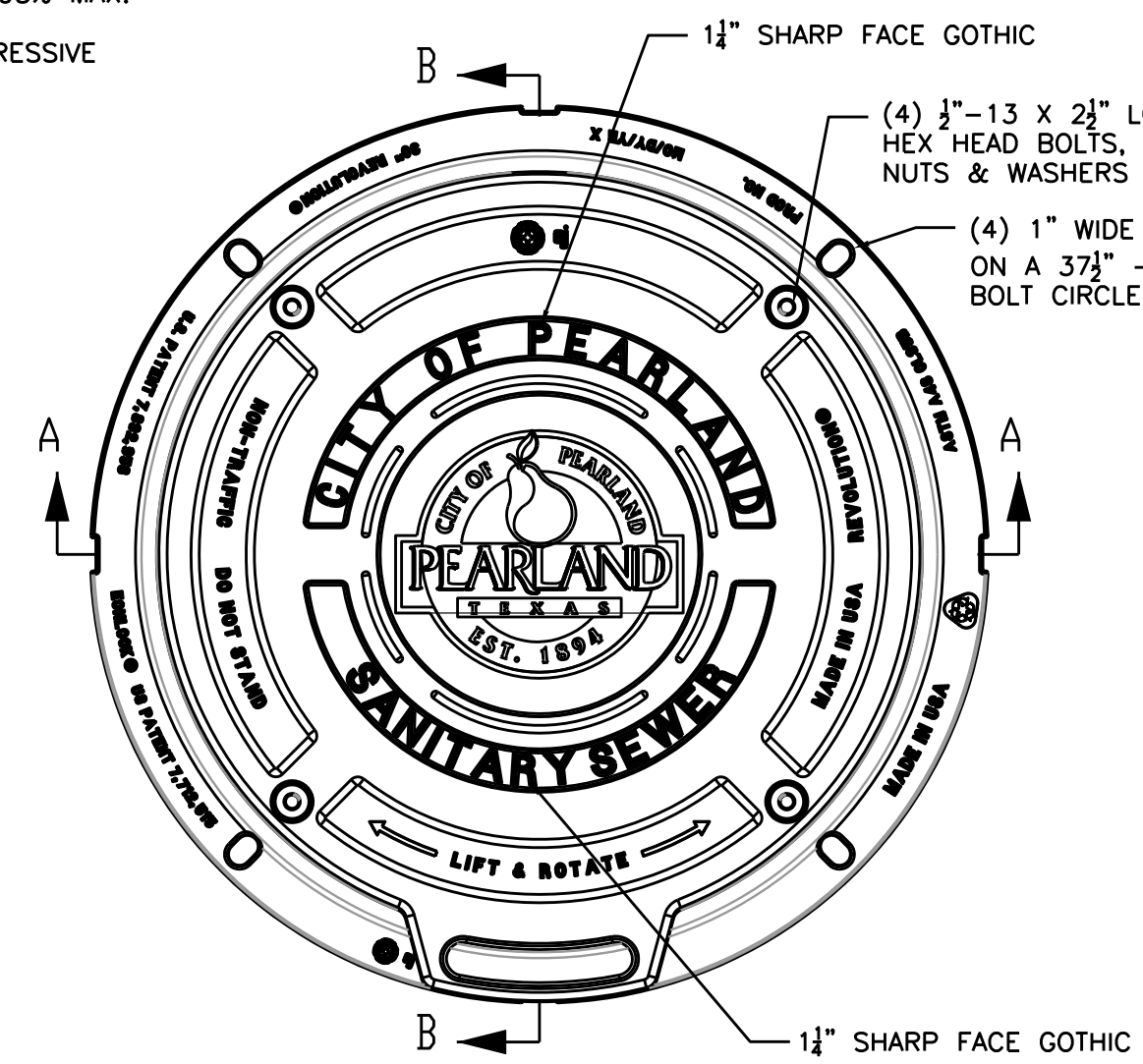
4
3 BEDDING AND BACKFILL FOR FORCE MAIN UNDER PAVEMENT



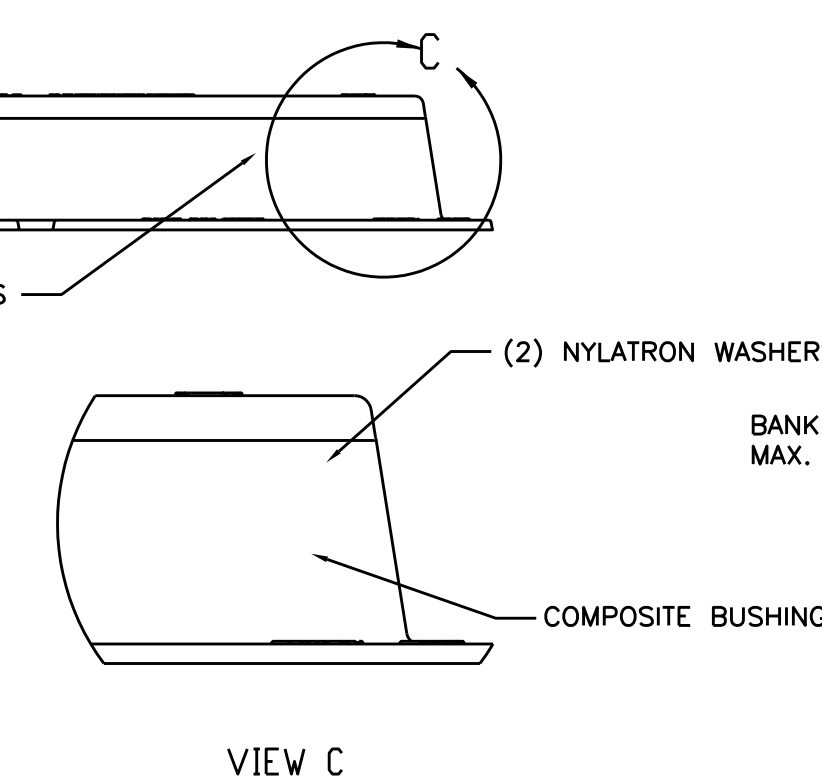
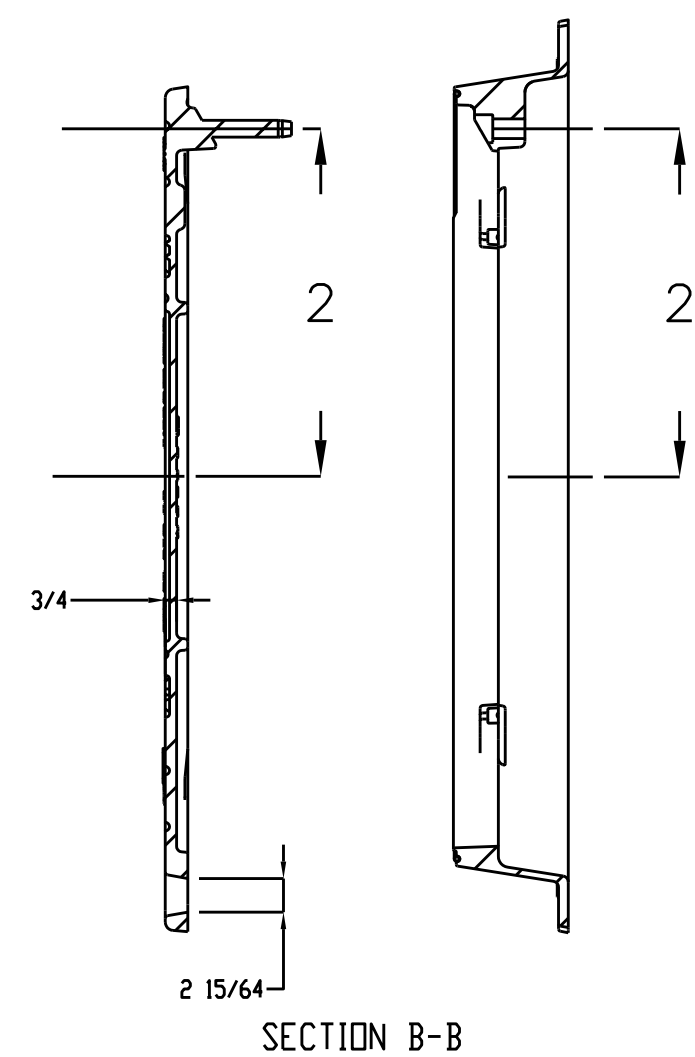
6
3 BEDDING AND BACKFILL FOR WET SAND GRADED AREA



2
3 AA PIPE BEDDING DETAIL FOR GRAVITY SEWER GRADED AREA



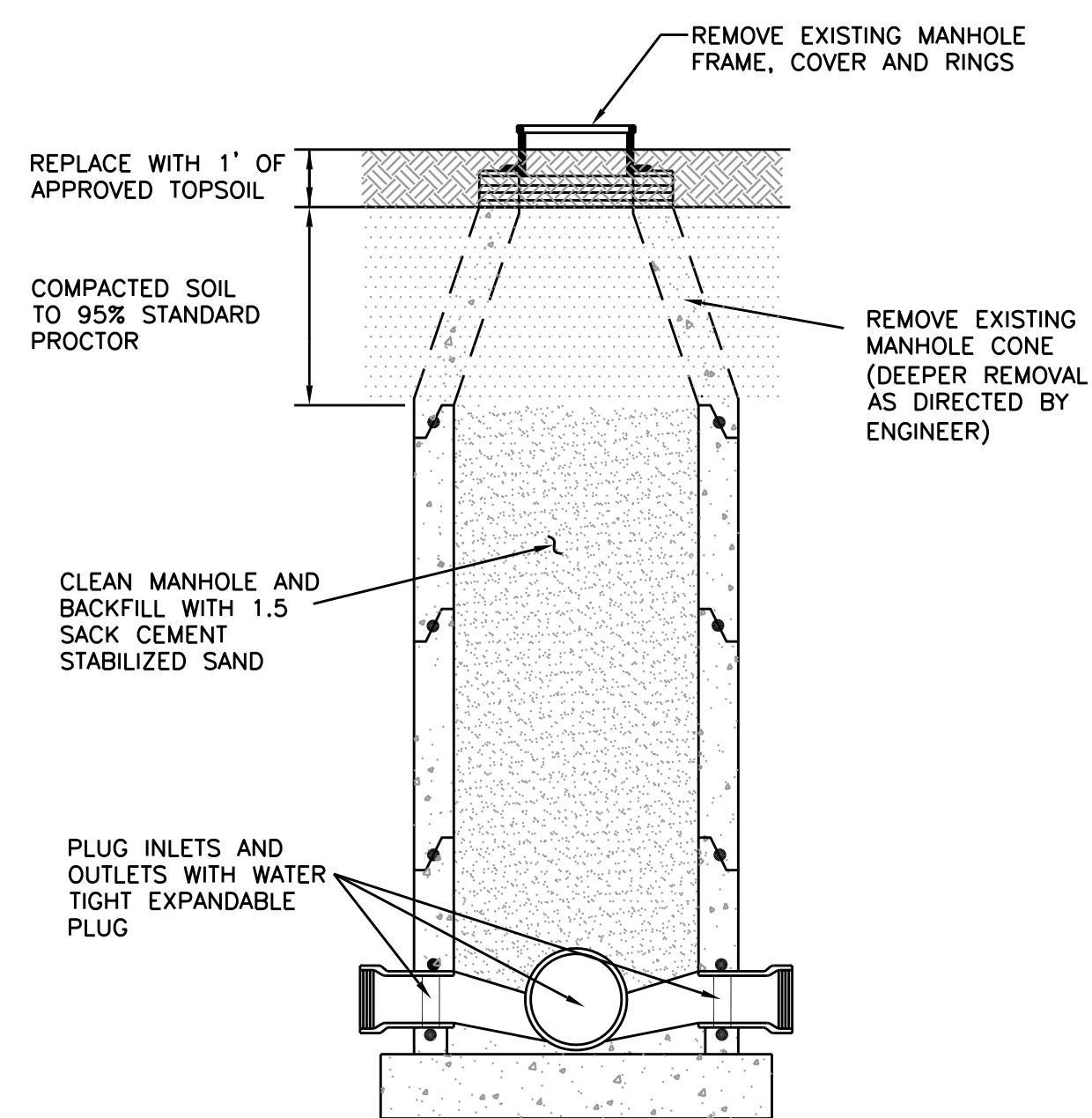
5
3 30° REVOLUTION ASSEMBLY



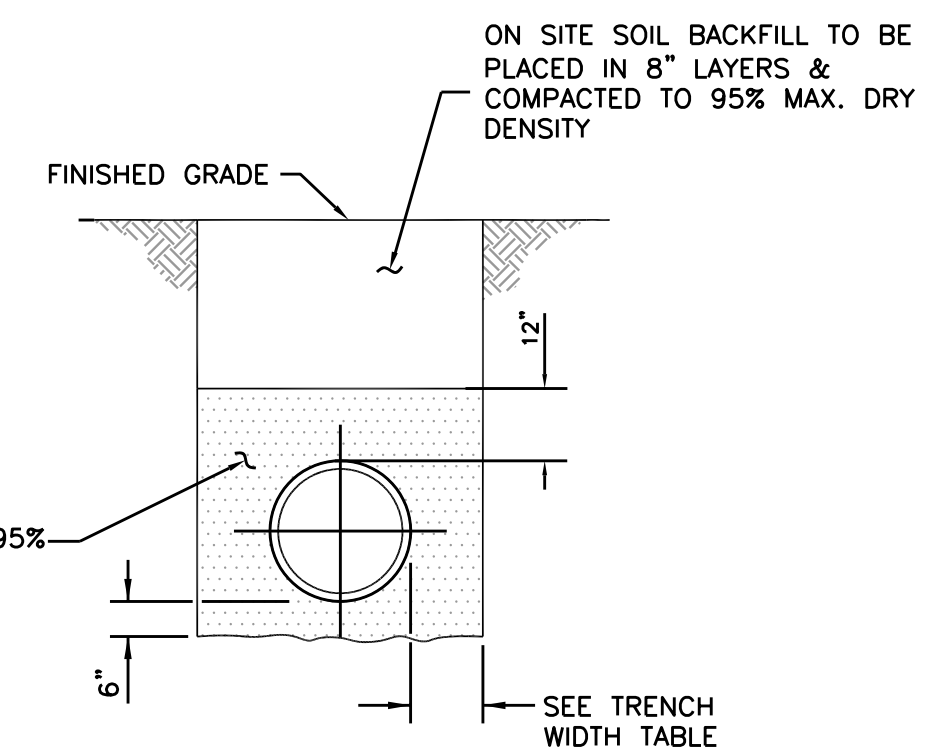
NOTE:
1. 30° REVOLUTION ASSEMBLY MANHOLE FRAME AND COVER TO BE E.J. IRON WORKS, OR OTHER APPROVED EQUAL BY PUBLIC WORKS.
2. USE REVOLUTION ASSEMBLY FOR MANHOLES COVER 2' ABOVE GRADE.

7
3 BEDDING AND BACKFILL FOR WET SAND UNDER PAVEMENT

NOTES:
1. NECESSITY FOR USE OF THIS SECTION TO BE DETERMINED BY THE ENGINEER AS CONSTRUCTION PROGRESSES AND MAY BE MODIFIED BY THE ENGINEER TO SUIT CONDITIONS ENCOUNTERED.
2. WELL POINTS TO BE INSTALLED AND TRENCH KEPT DRY DURING CONSTRUCTION UNTIL BACKFILL IS COMPLETELY PLACED AS APPROVED BY ENGINEER.



3
3 SANITARY SEWER MANHOLE ABANDONMENT



8
3 BEDDING AND BACKFILL FOR FORCE MAIN GRADED AREA

NOTE:

- ALL PVC PIPE SHALL HAVE RUBBER GASKET EQUIPPED BELL AND SPIGOT JOINTS CONFORMING TO ASTM D3212. ELASTOMERIC SEALS SHALL BE A SINGLE DOUBLE-SEALING GASKET SPANNING ONE FULL CORRUGATION WITH THE LEADING EDGE BEING LOWER THAN THE SECOND EDGE TO FACILITATE PROPER JOINING. THE GASKET MATERIAL SHALL CONFORM TO ASTM F477.
- ALL JOINTS IN PRE-CAST CONCRETE PIPE AND BOX SHALL RECEIVE JOINT SEALANT, RAM-NEK, OR APPROVED EQUAL.
- ALL PIPE WITHIN 1' OF PAVEMENT SHALL USE BACKFILL DETAIL FOR UNDER PAVEMENT.

TRENCH WIDTH TABLE	
NOMINAL PIPE SIZE (INCHES)	MINIMUM TRENCH WIDTH (INCHES)
LESS THAN 18	O.D. + 18
18 TO 30	O.D. + 24
GREATER THAN 30	O.D. + 36

PLEASE READ THE APPLICABLE COP SPECIFICATION SECTIONS FOR DETAILED INFORMATION.

PLEASE REFERENCE THE COP APPROVED PRODUCT LIST FOR APPLICABLE PRODUCT INFORMATION.

THIS DETAIL SHEET HAS BEEN PREPARED FOR USE ON STANDARD CITY OF PEARLAND PROJECTS. AN ENGINEER WHO INCORPORATES THE DETAILS ON THIS SHEET BECOMES RESPONSIBLE FOR ITS USE IN THE END PRODUCT IN ACCORDANCE WITH RULE 137.33 (b) AND (c) OF THE TEXAS STATE BOARD OF REGISTRATION FOR PROFESSIONAL ENGINEERS.



City of Pearland, Texas

STANDARD DETAILS

SANITARY SEWER

Job No.:	Scale:	SHEET
Date: JAN 2020	HORZ: 1"=NONE	3
Dwn By:RS	VERT: 1"=NONE	
Chkd By:RU	CAD FILE:	
	COP-SAN3	OF 3