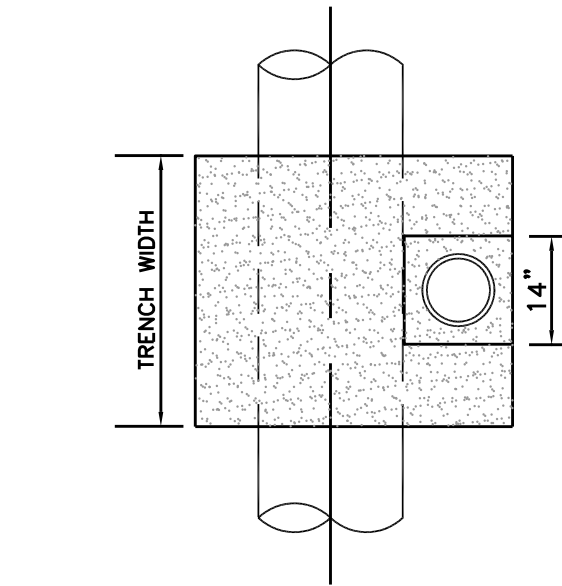
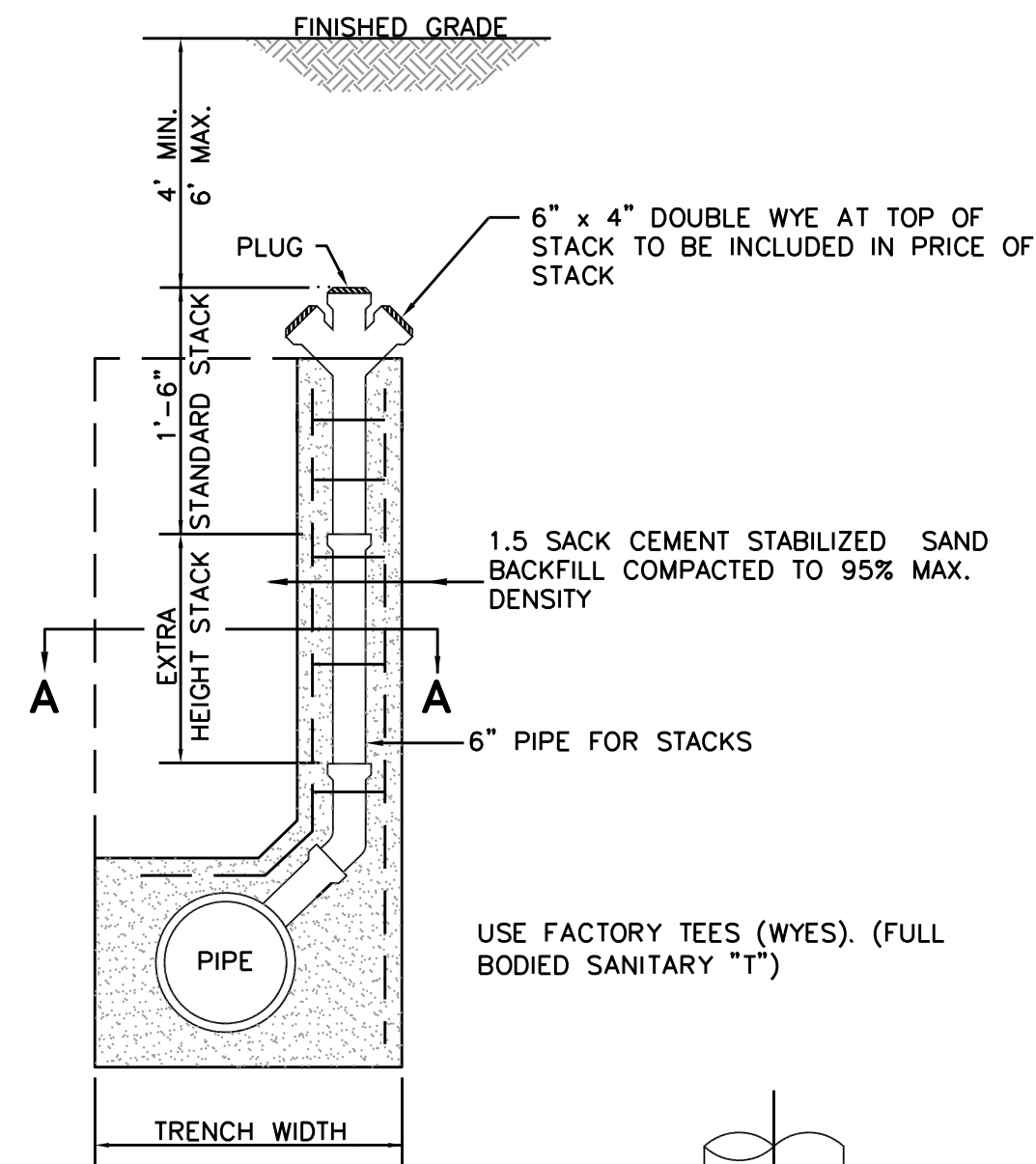


SANITARY SEWER SYSTEM CONSTRUCTION NOTES

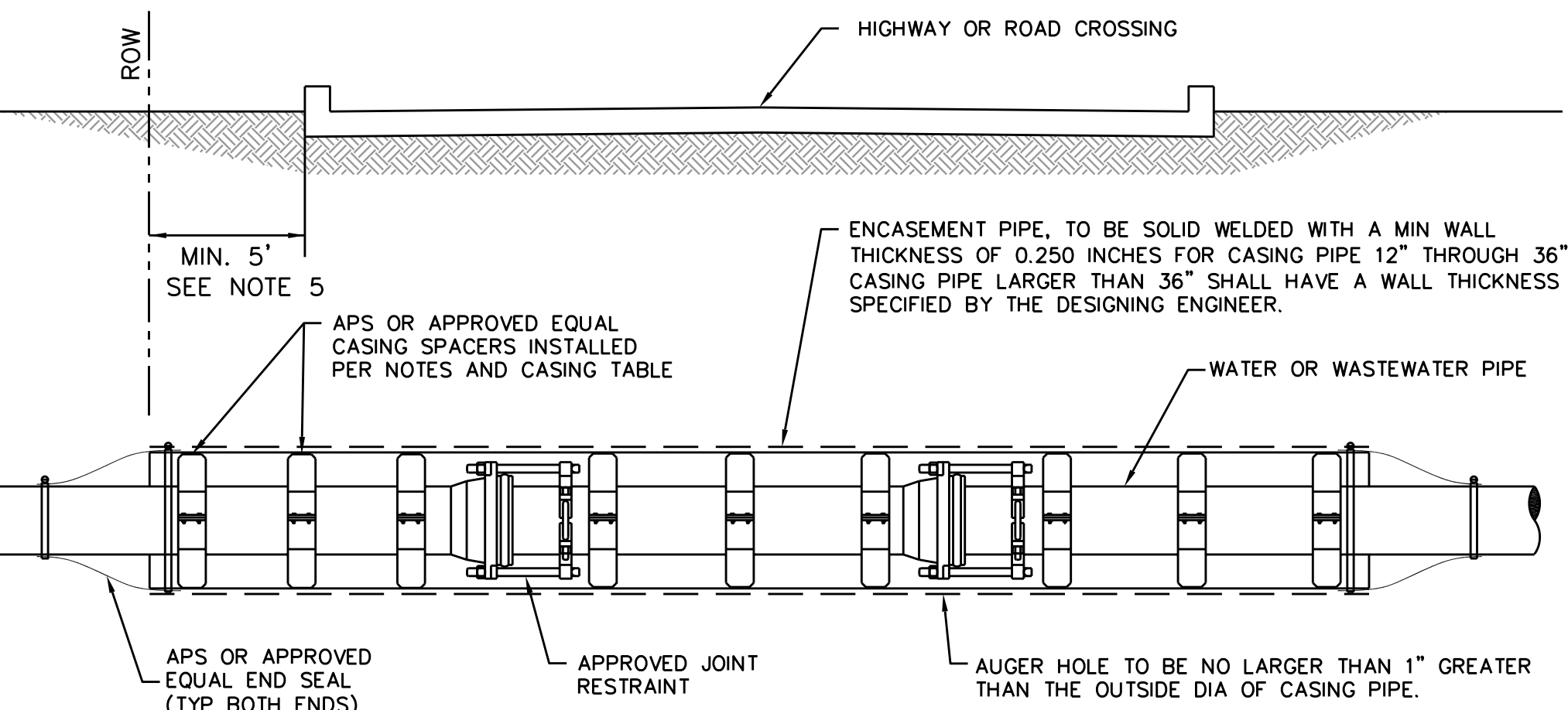
1. PVC PIPE (POLYVINYL CHLORIDE) SHALL BE IN ACCORDANCE WITH ASTM D3034, SDR 26 GRAVITY.
2. ALL PVC PIPE (ALL TYPES AND SDR/DR WALL THICKNESS TO BE USED) SHALL HAVE RUBBER GASKET EQUIPPED BELL AND SPIGOT JOINTS CONFORMING TO ASTM D-3212. THE GASKET MATERIAL SHALL CONFORM TO ASTM F-477. SOLVENT WELDED JOINTS WILL NOT BE APPROVED FOR CITY SEWER LINES.
3. MAINTAIN 12-INCH MINIMUM CLEARANCE BETWEEN ALL SANITARY SEWERS, AND CULVERTS UNLESS OTHERWISE NOTED.
4. BEDDING FOR ALL TYPES OF SANITARY SEWER PIPE SHALL BE CLASS "AA" AT ALL DEPTHS (NO SEPARATE PAY).
5. FOR ALL PVC PIPE, USE MANHOLE WATER STOP GASKET AND CLAMP ASSEMBLY AT MANHOLE CONNECTIONS (NO SEPARATE PAY).
6. SANITARY SEWER MANHOLES SHALL BE STANDARD TYPE, UNLESS OTHERWISE NOTED, AND BACKFILLED WITH CEMENT STABILIZED SAND AS SPECIFIED (NO SEPARATE PAY). ALL SANITARY MANHOLES SHALL BE AT LEAST 1 FOOT ABOVE THE 100 YEAR BASE FLOOD ELEVATION. SECTIONS FOR PRECAST MANHOLES SHALL BE JOINED WITH RUBBER GASKET JOINTS. "RAM NEX" MAY BE ADDED BUT CAN NOT SUBSTITUTE THE RUBBER GASKET.
7. ALL FAR-SIDE LEADS SHALL BE 6" DIAMETER AT 0.7% OR 8" DIAMETER AT 0.44% MIN. SLOPE AND SHALL BE PVC, DR 26, 150 PSI PRESSURE PIPE CONFORMING TO ASTM D-2241.
8. LEADS SERVING TWO LOTS SHALL HAVE A SERVICE "WYE" WITH PLUGS (NO SEPARATE PAY). THE "WYE" SHALL BE LOCATED WITHIN THE STREET RIGHT-OF-WAY OR ADJOINING UTILITY EASEMENT.
9. IF WET SAND IS ENCOUNTERED IN THE FIELD, USE SPECIAL BEDDING AS DETERMINED BY THE CITY.
10. PROVIDE "UNI-FLANGE" OR APPROVED EQUAL PIPE RESTRAINT AND CASING SYSTEM ON UNDERGROUND PRESSURE PIPE SYSTEMS.
11. CONTRACTOR SHALL MARK AND MAINTAIN RECORDS OF STUBS, STACKS, AND END OF SERVICE LEAD LOCATION AS A PART OF AS-BUILT.

SPECIAL NOTES: LOCATION OF SANITARY SEWER FACILITIES

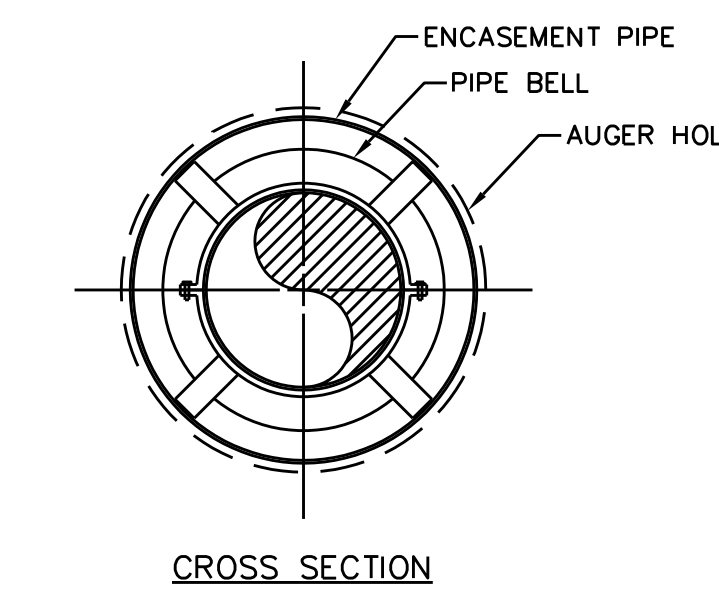
1. THE UTILITY CONTRACTOR IS RESPONSIBLE FOR LOCATING AND MARKING ALL STACKS AND FAR SIDE LEADS AFTER THE PAVING IN THIS SECTION IS COMPLETE. A 1/4-INCH DEEP NOTCH SHALL BE CUT IN THE CURB AND PAINTED WITH A GREEN LINE ADJACENT TO THE STACK OR LEAD.



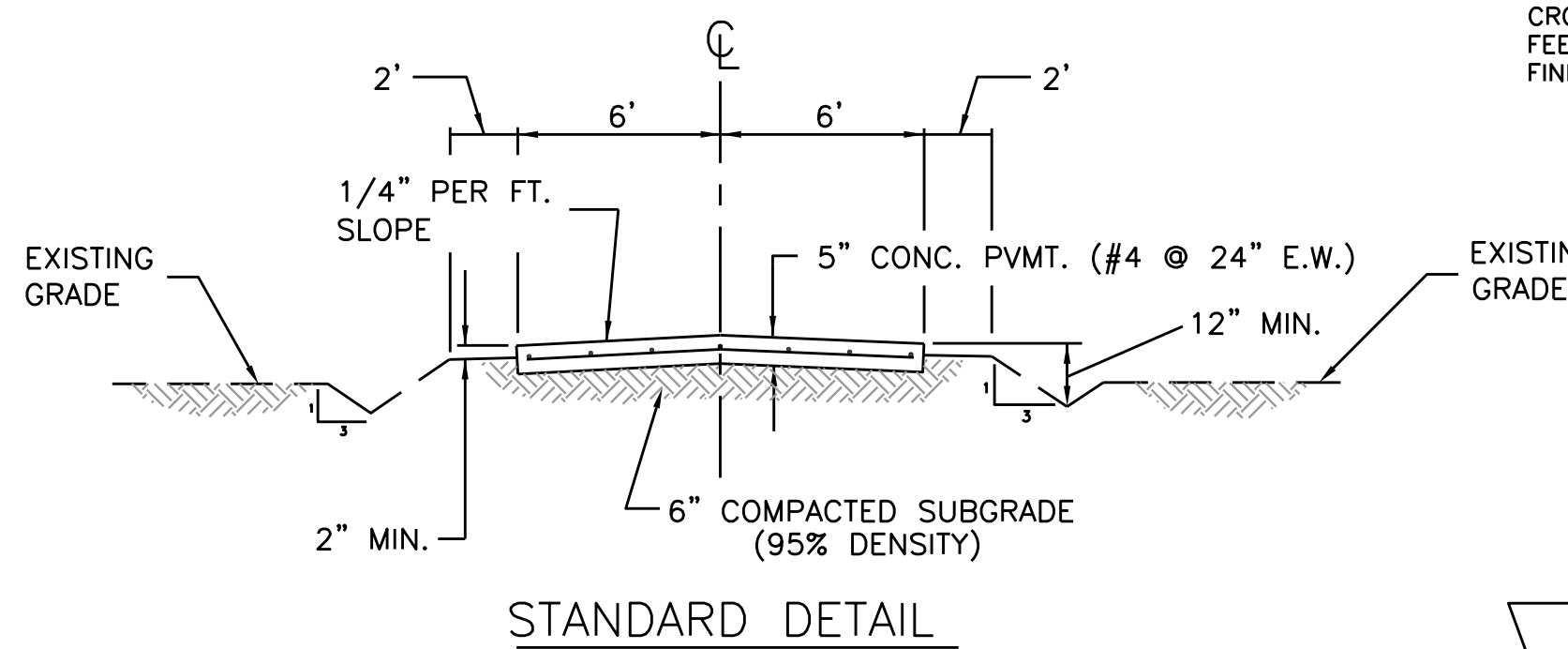
NOTES:
1. PROVIDE STACKS FOR SERVICE CONNECTION WHEREVER THE CROWN OF THE SEWER IS 8 FEET OR MORE BELOW FINISHED GRADE.



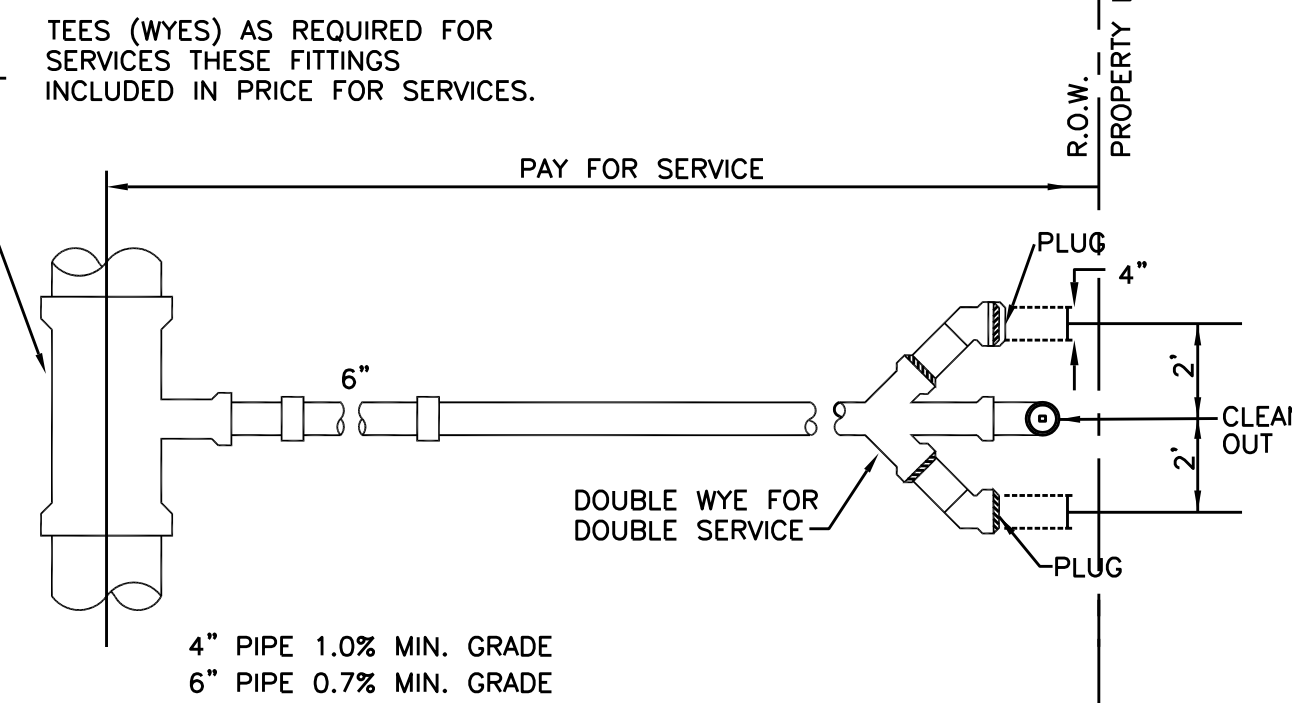
CASING TABLE		
NOMINAL PIPE SIZE DIA IN INCHES	MIN CASING SIZE INSIDE DIA IN INCHES	MAX SKID SUPPORT SPACING IN FEET
4	12	4.7
6	12	6.3
8	16	7.4
10	18	8.5
12	20	9.6
15 & 16	22	11.0
18	26	12.0
20 & 21	30	12.0
24	33	12.0
27	36	12.0



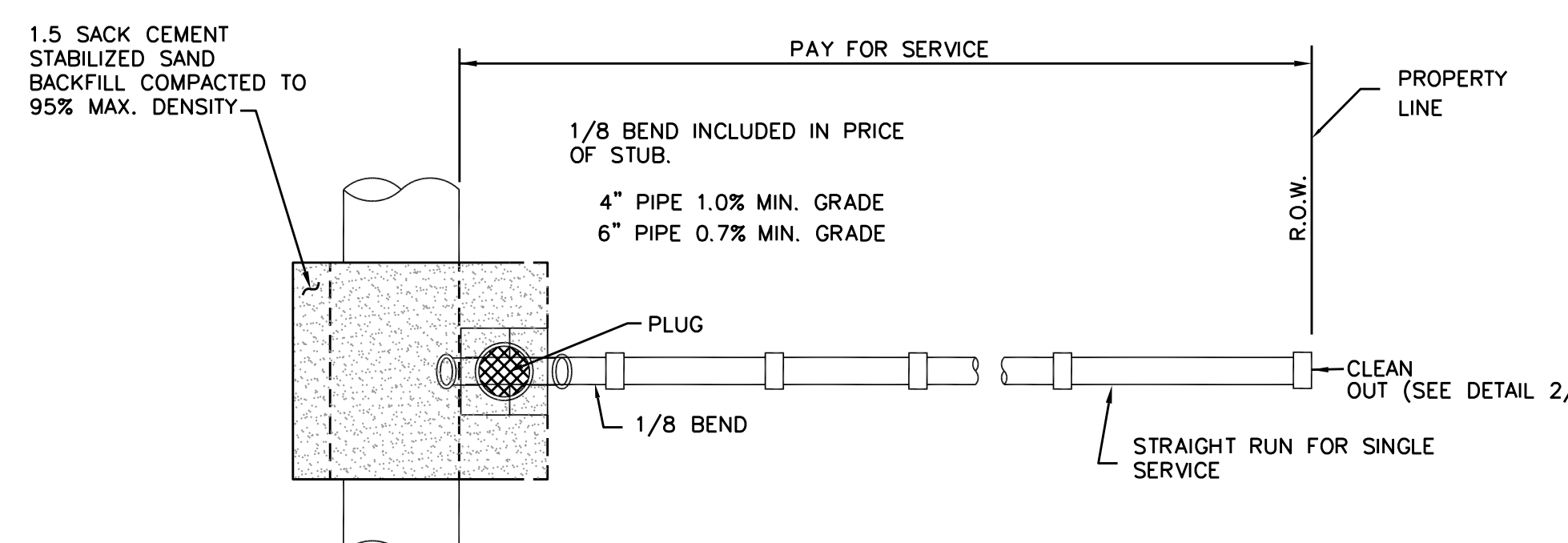
- NOTES:
1. SPACERS FOR CARRIER PIPE SHALL BE STAINLESS STEEL, NEOPRENE OR APPROVED EQUAL AND SHALL BE INSTALLED TO CENTER CARRIER PIPE WITHIN CASING WITH A MAX TOLERANCE OF 1/2" BETWEEN RUNNER AND CASING INSIDE AS WELL AS PREVENT THE CARRIER PIPE FROM RESTING ON THE BELLS WITHIN THE CASING. SEE CASING TABLE FOR SPACER DISTANCE AND NUMBER OF SPACERS.
 2. SPACERS TO BE PLACED A MIN OF 1' BACK FROM EACH JOINT THAT FALLS WITHIN CASING, A GREATER SET BACK MAY BE REQUIRED FOR LARGER PIPE. SEE CASING TABLE FOR ADDITIONAL INFO ON SPACING OF SUPPORTS.
 3. WHEN INSTALLING GRAVITY PIPE WITH CASING CONTRACTOR SHALL TAKE INTO CONSIDERATION PIPE GRADE SO THAT THE SEWER PIPE MAINTAINS THE PROPER FALL.
 4. JOINT RESTRAINTS ARE REQUIRED ON ALL JOINTS THAT FALL UNDER OR WITHIN 10' OF HIGHWAY CROSSINGS REGARDLESS OF PIPE MATERIAL, CASING OR NOT.
 5. THE LENGTH OF CASING MAY VARY DEPENDING ON THE TYPE OF ROADWAY. THE CASING SHALL BE EXTENDED FROM ROW TO ROW FOR STATE HIGHWAYS, THOROUGHFARES, AND COLLECTOR STREETS.



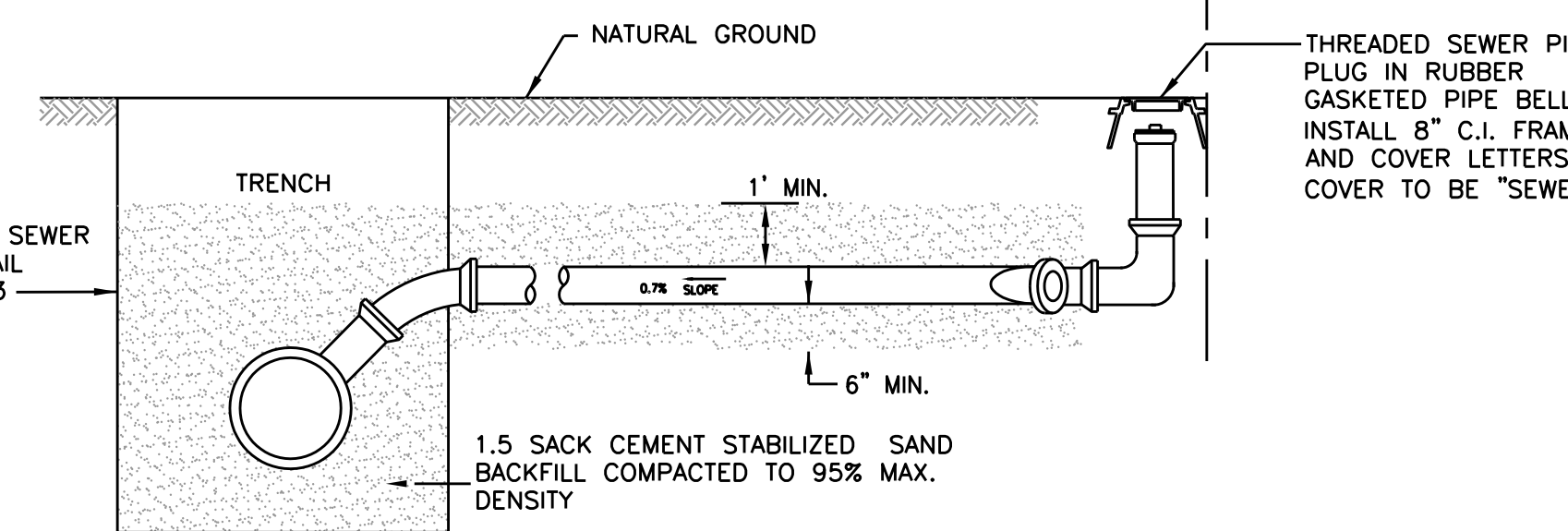
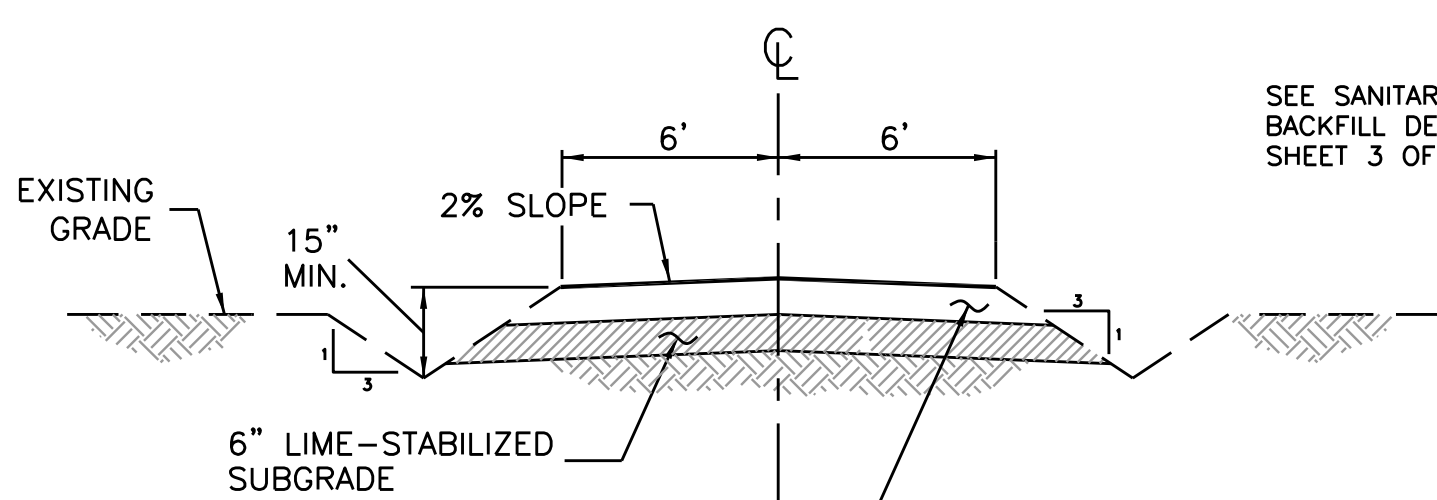
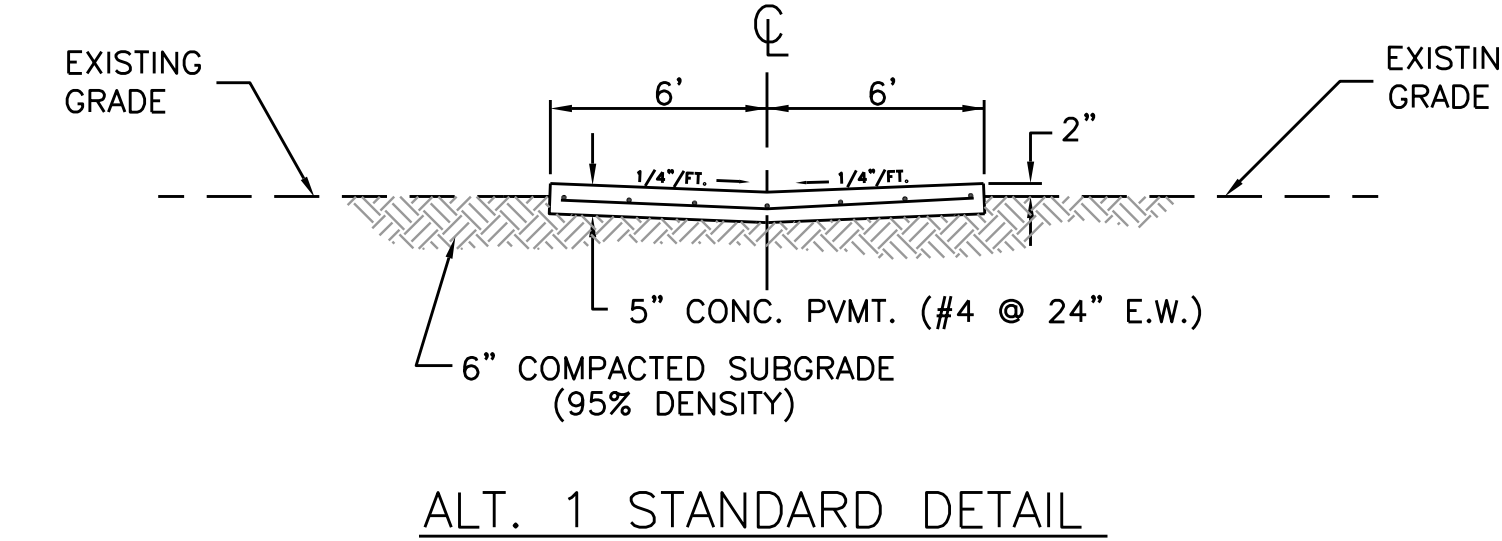
1 SANITARY SEWER STACK



3 STEEL PIPE CASING



- NOTES:
1. ALL SINGLE SEWER SERVICES AND DOUBLE SEWER SERVICES, AS SHOWN, ARE INTERCHANGEABLE, AS REQUIRED, TO CONNECT WITH STACKS, DOUBLE WYES AND WYES, AS REQUIRED, TAPS FOR PVC PIPE TO BE PVC "T" OR "Y".
 2. SANITARY SEWER SERVICES SHALL NOT BE CONNECTED TO MANHOLE.



- NOTES:
1. ALL SANITARY SEWER SERVICES WILL BE BROUGHT TO WITHIN 4 TO 6 FEET OF FINISHED LOT GRADE ELEVATION AT PROPERTY LINE (RIGHT OF WAY).
 2. SEWER SERVICE LEADS SHALL NOT BE BACKFILLED UNTIL VISUALLY INSPECTED BY CITY INSPECTOR.
 3. SANITARY SEWER SERVICES SHALL NOT BE CONNECTED TO MANHOLE.

(MARK ACTUAL STATION AND FLOW LINE ELEVATION OF EACH SERVICE CONNECTION AT PLUG ON AS-BUILT DRAWINGS.)

2 LIFT STATION ACCESS ROAD

2 DOUBLE SEWER SERVICE

4 SINGLE SEWER SERVICE

NOTE:

1. ALL SANITARY SEWER TAPS WILL BE PLACED IN LINE WITH PROPERTY CORNER OR PLACED HALF WAY BETWEEN THE FRONT LOT CORNERS, OR AT PC OF CURB RETURN IN MULTI LOT SUBDIVISIONS.
2. IF LOTS ARE LESS THAN 60', IN WIDTH TAPS ARE TO BE PLACED AT PROPERTY CORNERS.

PLEASE READ THE APPLICABLE COP SPECIFICATION SECTIONS FOR DETAILED INFORMATION.

PLEASE REFERENCE THE COP APPROVED PRODUCT LIST FOR APPLICABLE PRODUCT INFORMATION.

THIS DETAIL SHEET HAS BEEN PREPARED FOR USE ON STANDARD CITY OF PEARLAND PROJECTS. AN ENGINEER WHO INCORPORATES THE DETAILS ON THIS SHEET BECOMES RESPONSIBLE FOR ITS USE IN THE END PRODUCT IN ACCORDANCE WITH RULE 137.33 (b) AND (c) OF THE TEXAS STATE BOARD OF REGISTRATION FOR PROFESSIONAL ENGINEERS.



City of Pearland, Texas

STANDARD DETAILS

SANITARY SEWER

Job No.:	Scale:	SHEET
Date: JAN 2020	HORZ: 1"=NONE	2
Dwn By: RS	VERT: 1"=NONE	3
Chk'd By: RU	CAD FILE:	
	COP-SAN2	