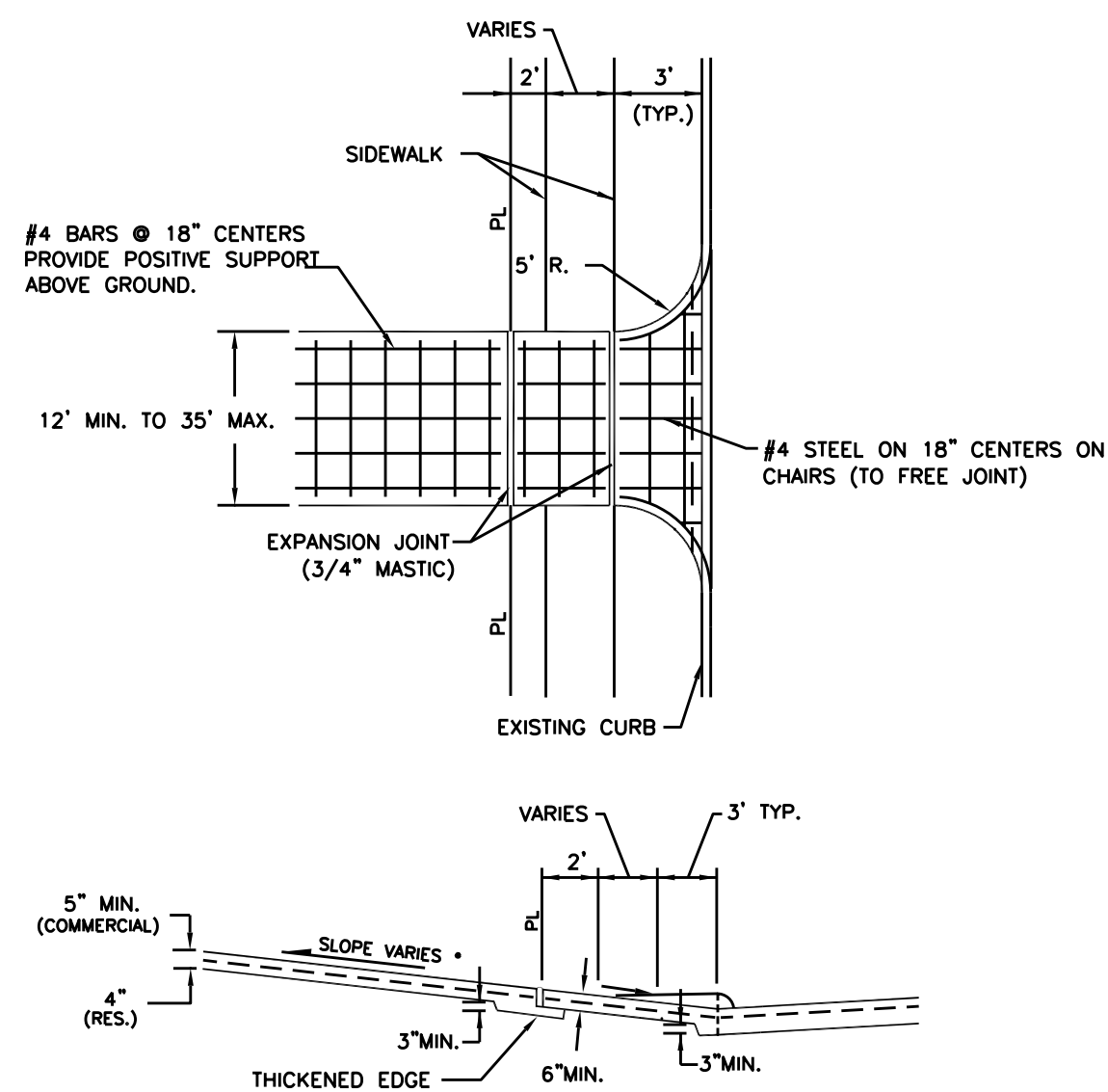


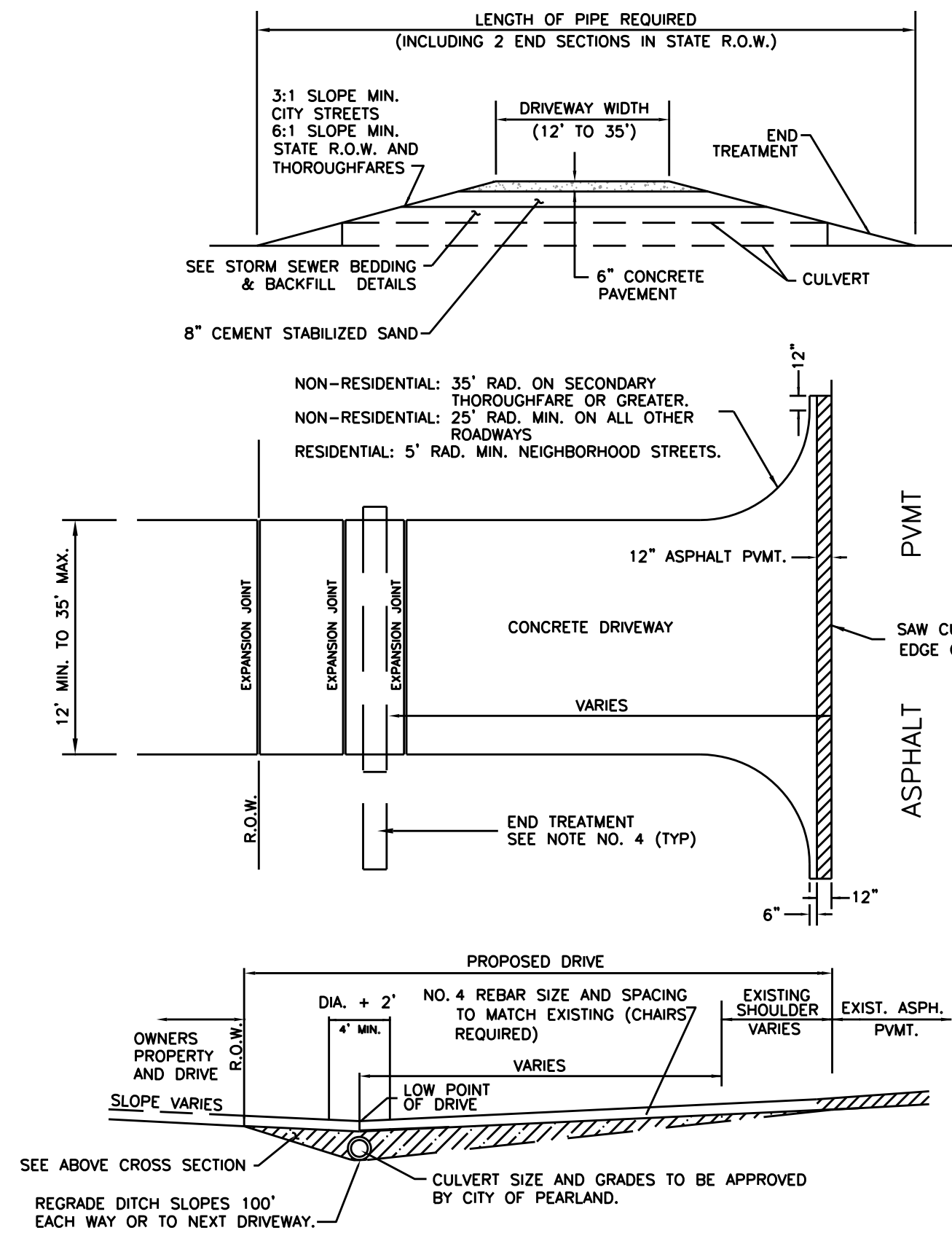
- * NOTES:
1. ALL DRIVEWAYS IN STATE R.O.W. REQUIRE TXDOT TRAFFIC CONTROL PLAN PRIOR TO BEGINNING CONSTRUCTION.
 2. SAW CUT AT EDGE OF ASPHALT.
 3. SPECIAL END TREATMENTS ARE REQUIRED ON ALL CULVERTS IN THOROUGHFARES.

1 ASPHALT DRIVEWAY TO ASPHALT STREET
1 OPEN DITCH



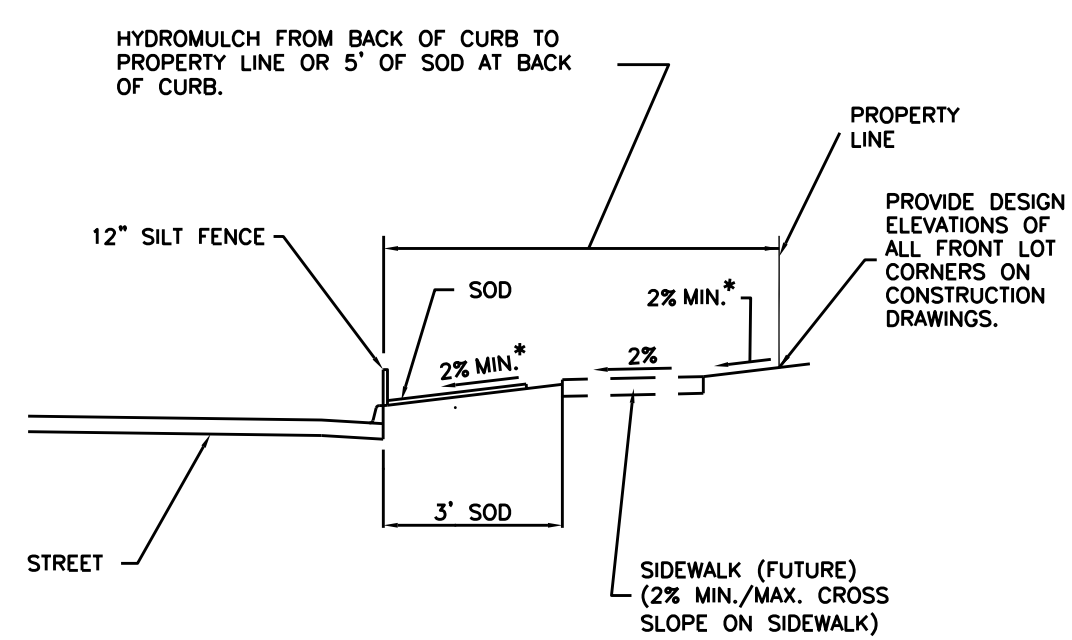
- * NOTES:
1. CITY STREETS ONLY. NO CUTOUTS ARE PERMITTED ON TEXAS STATE HIGHWAYS.
 2. ALL CUTOUTS MUST HAVE BARRICADES INSTALLED UNTIL DRIVEWAYS ARE POURED.
 3. ALL DRIVEWAYS IN STATE R.O.W. REQUIRE TXDOT PERMIT AND TRAFFIC CONTROL PLAN PRIOR TO BEGINNING CONSTRUCTION.
 4. DESIRABLE DRIVEWAY SLOPE MAY VARY BETWEEN 2% AND 8%.

2 CONCRETE DRIVEWAY TO CONCRETE
1 CURB AND GUTTER STREET



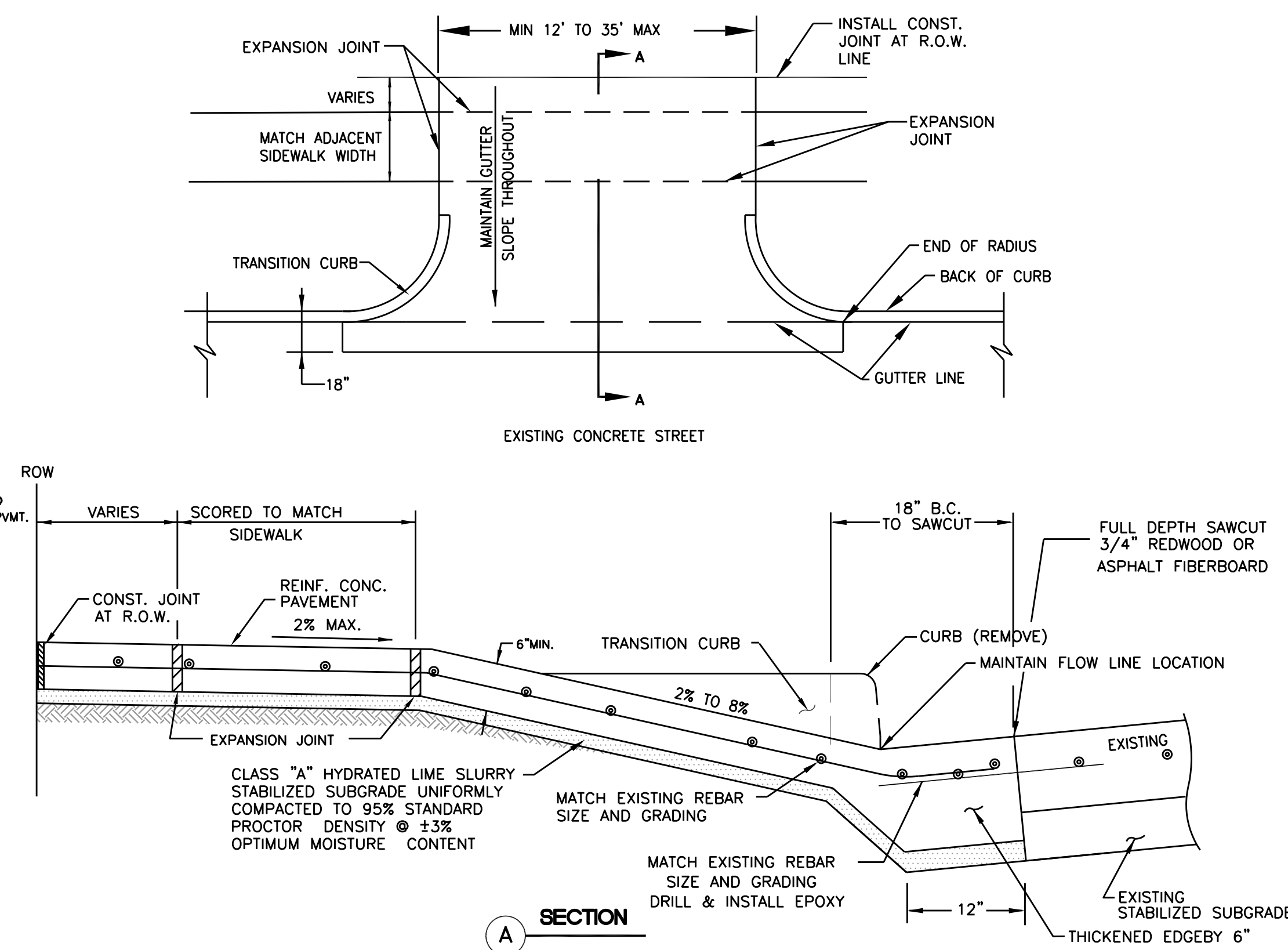
- * NOTES:
1. ALL DRIVEWAYS IN STATE R.O.W. REQUIRE TXDOT TRAFFIC CONTROL PLAN PRIOR TO BEGINNING CONSTRUCTION.
 2. SAW CUT AT EDGE OF ASPHALT.
 3. STABILIZED SAND TO BE PIPE DIAMETER PLUS 2" AND 2" ABOVE TOP BELL ON PIPE.
 4. SPECIAL END TREATMENTS ARE REQUIRED ON ALL CULVERTS IN THOROUGHFARES.

3 CONCRETE DRIVEWAY TO ASPHALT STREET
1 OPEN DITCH

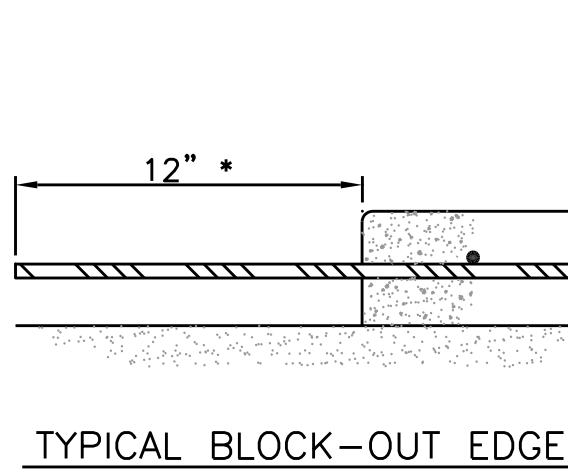
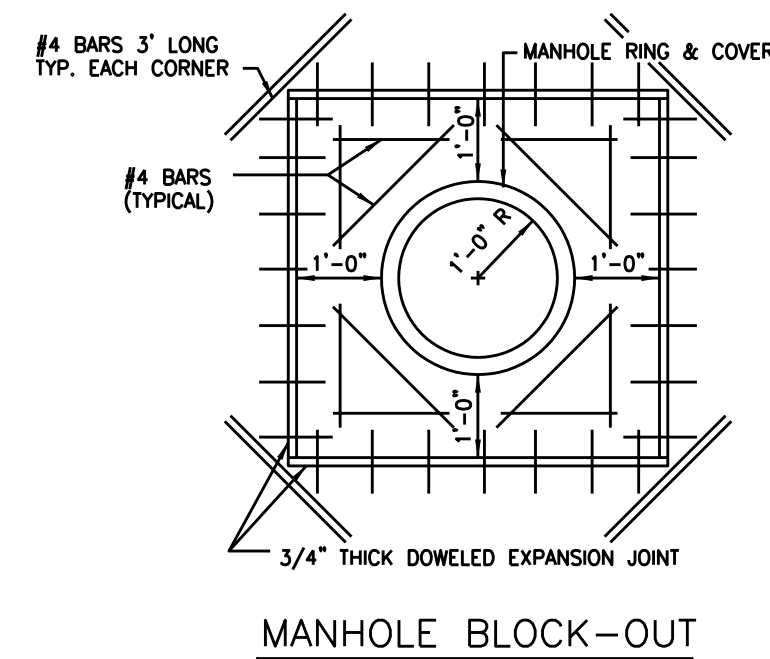


- * CROSS SLOPE FROM BACK OF CURB TO EDGE OF SIDEWALK AND FROM EDGE OF SIDEWALK TO THE PROPERTY LINE, SHALL BE AT 2% MINIMUM. MAXIMUM CROSS SLOPE, UNLESS APPROVED OTHERWISE IN WRITING, FOR CRASSED SURFACES SHALL BE 12:1, OR 8%.
- NOTES:
1. MAINTAIN SILT FENCE UNTIL AT A MINIMUM OF 70% STABILIZATION OF DISTURBED AREA IS PERMANENTLY STABILIZED.
 2. 90% COMPACTION MUST BE MAINTAINED FROM BACK OF CURB TO PROPERTY LINE.

4 PARK STRIP DETAIL
1

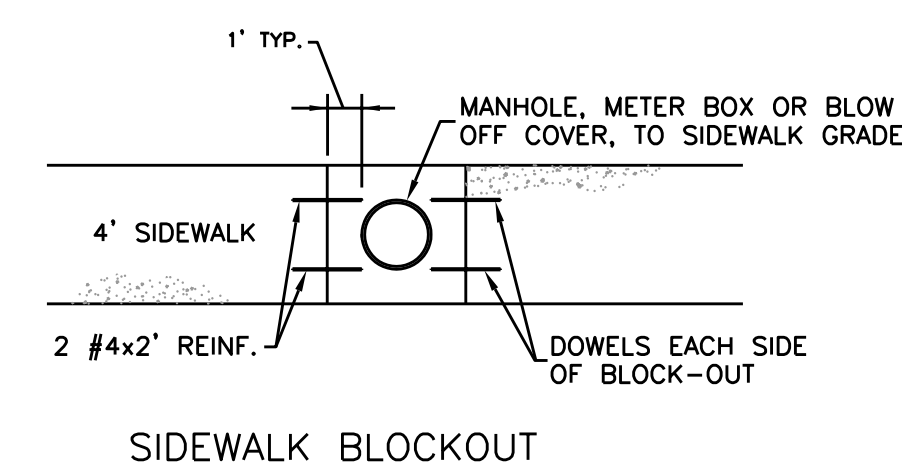
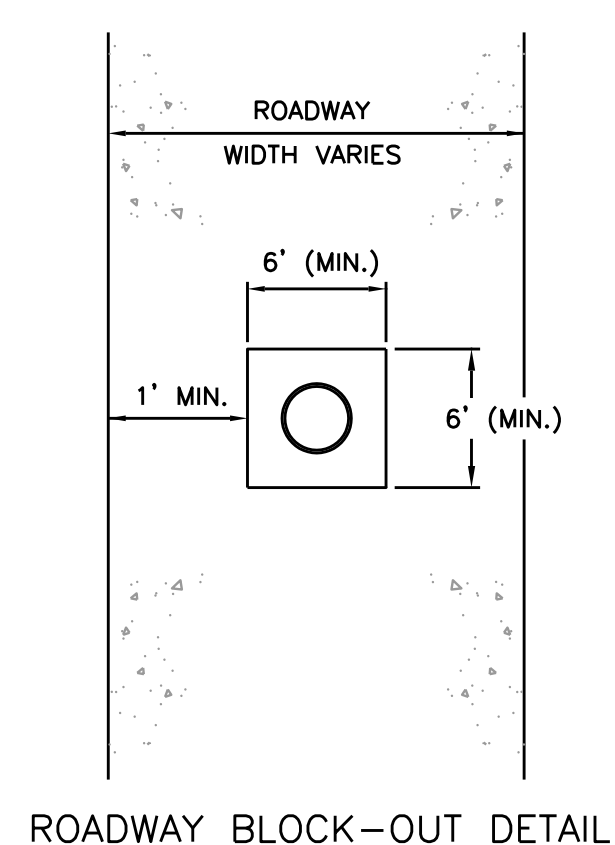


5 NEW CONCRETE DRIVEWAY BLOCK OUT
1 TO EXISTING CONCRETE STREET



- * LEAVE 12"x #4 REINF. (MIN.) STEEL STUB-OUT ON ALL BLOCK-OUTS.

DRIVEWAY BLOCK-OUT DETAIL
* IF LESS THAN 12" CONTINUE BLOCK-OUT TO DRIVEWAY EDGE.



6 MANHOLE BLOCK-OUT DETAIL
1

- NOTE:
1. ALL DRIVEWAY THICKNESS AND REBAR SIZE AND SPACING TO BE MATCH EXISTING.

THIS DETAIL SHEET HAS BEEN PREPARED FOR USE ON STANDARD CITY OF PEARLAND PROJECTS. AN ENGINEER WHO INCORPORATES THE DETAILS ON THIS SHEET BECOMES RESPONSIBLE FOR ITS USE IN THE END PRODUCT IN ACCORDANCE WITH RULE 137.33 (b) AND (c) OF THE TEXAS STATE BOARD OF REGISTRATION FOR PROFESSIONAL ENGINEERS.



City of Pearland, Texas

STANDARD DETAILS

DRIVEWAY DETAILS

Job No.:	Scale:	SHEET
Date: JAN 2020	HORIZ: 1"=NONE	1
Dwn By: PRP	VERT: 1"=NONE	
Chkd By: RS	CAD FILE:	
	COP-DW.dwg	OF 1