

12/12/2018
 To: Mayor and City Council members
 Design continuing on the NB SH 288 frontage road, tracking for construction start 2019. Clay



SH288 Northbound Frontage Road (CR59 to FM518)

Scope: Construct a 3-lane concrete curb and gutter “urban” cross-section frontage road from County Road 59 to FM 518 (Broadway), northbound only, to include a U-Turn lane under the CR59 Overpass, to include access lane to SH288 main lanes. Project includes right of way acquisition for detention pond.

Justification: Current traffic routes from the Silver Lake and Southfork and areas to the south must travel through these subdivisions along Smith Ranch (CR94) to access Broadway and commercial areas in the southeast quadrant of SH288 and Broadway. This frontage road would provide an alternate route to access these locations and 288 main lanes. Additionally, the frontage road would open up prime commercial frontage along SH288 between CR59 and Broadway to development and will reduce traffic on Broadway. The City is working



with Brazoria County to accelerate the project by adding the project to the SH288 Toll Lane project. This will take advantage of the bid prices for the larger toll lane project resulting in a significant time and cost savings. The City will fund the design and the County will share the construction costs with the City. This will accelerate the project by 6 years with a target completion date of late 2020.

Project Manager: Fatema Weekly

Designer: HDR Engineering, Inc.

Contractor: N/A

Budget Info:

Funding Sources	Series	To Date	Future	Total Budget
General Revenue - Cash				-
Certificates of Obligation	2017	450,000		450,000
Certificates of Obligation			3,185,000	3,185,000
General Obligation Bonds				-
General Obligation Bonds				-
W/S Revenue Bonds				-
PEDC		450,000	300,000	750,000
Other Funding Sources - County			1,500,000	1,500,000
Total Funding Sources		900,000	4,985,000	5,885,000

Expenditures	To Date	Future	Total
PER			-
Land		610,000	610,000
Design	664,137		664,137
Construction		3,804,348	3,804,348
Construction Management/Inspection			-
Construction Materials Testing		75,000	75,000
FF&E			-

Total Expenditures	664,137	4,489,348	5,153,485
Project Balance/Contingency			731,516

Schedule Info:

	Base Line	Current
Design Start	April-18	April-18
Bid Start	Jan/June-19	
Construction Start	Mar/Oct-19	
Construction Completion	March-20	

Rain Days: N/A

Highlights:

On August 28, 2018 Staff submitted, to TxDOT, initial schematics for the roadway required for project approval. On October 8, Staff submitted the 60% plans to TxDOT for initial reviews. In an effort to accelerate the design and review process, staff has had the design of the roadway plans running in parallel with TxDOT's schematic review process. On November 28, 2018 staff submitted a revised Schematic based on earlier TxDOT comments along with the revised SH288 Northbound Frontage Road Justification Report.

On November 29, 2018 the updated Traffic Noise Technical Report (TNTR) and Traffic Noise Contour Model (TNM) were submitted to TxDOT for final review and approval by the Environmental Division at the District office.

Staff has been working with the U.S. Army Corps of Engineers (USACE) to accept a review and updating of the existing Environmental Permit prepared for the Toll Lane project. This effort is aimed at seeking USACE approval to update the permit rather than producing a new report and new permit. The original environmental consultant that conducted the report has been contracted to produce and submit an update of any changes that may have occurred with the addition of the frontage road and the addition of associated drainage infrastructure.

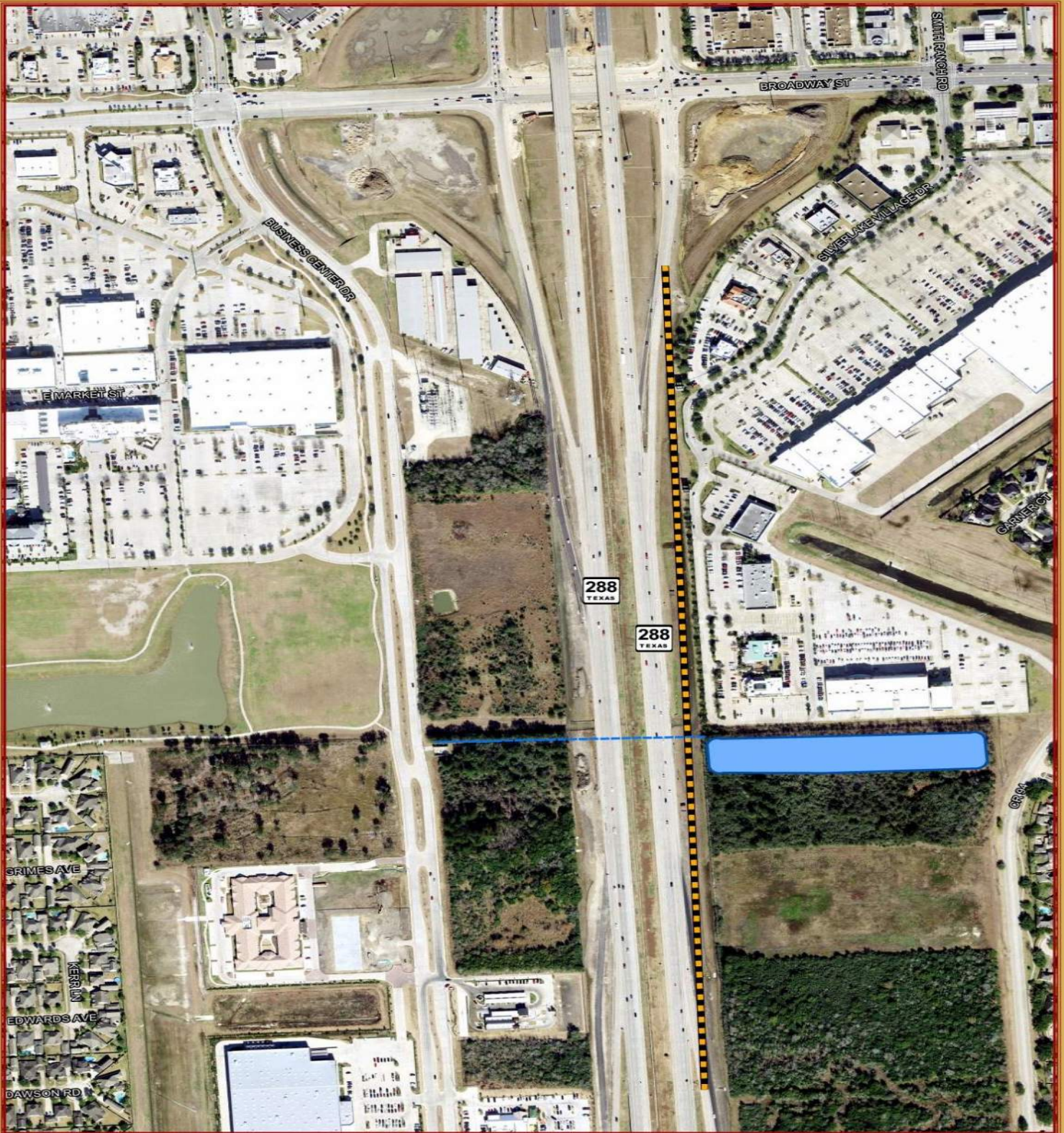
The 90% plans and documents are due to TxDOT the first week of January. Project is currently in conformity with the above schedule.

Upcoming Work Items:

- Staff is working with Brazoria County to finalize a donation deed of unused County road right of way for the offsite Drainage.
- Surveyor is establishing metes and bounds of Silver Lakes plat to determine potential ROW encroachments by the developer of the road right of way to be repurposed as a detention pond.
- Crouch Environmental Services, Inc. to finalize the delineation to determine the presence of current wetlands in an effort to extend the June 2012 USACE Preliminary Jurisdictional Determination (PJD) letter and or establish new permitting requirements if existing letter not extended by the Corps.
- The original 2012 PJD did not incorporate the proposed offsite drainage area. Crouch will submit a request to amend existing report to include this area. If the request is not granted, Crouch, will submit the required documentation to the Corps for permitting.
- HDR Engineering, Inc. to submit 90% roadway plans to TxDOT first week of January for review and approval.
- Staff will be submitting the 90% plans to Brazoria County and the contractor to review and start preparing the cost estimates so the project can be incorporated in the Toll Road project.

Previous Memos: 3/2/17, 7/26/18, 9/6/18, 10/4/18

Project Location Map



CITY OF PEARLAND 288 Frontage Road

-  288 Frontage
-  Detention Pond
-  288 Outfall



0 160 320
Feet

This product is for informational purposes and may not have been prepared for or be suitable for legal, engineering, or surveying purposes. It does not represent an on-the-ground survey and represents only the approximate relative location of property boundaries.

MAP PREPARED: OCTOBER 2015
CITY OF PEARLAND GIS DEPARTMENT