



# Memo

To: Clay Pearson, City Manager  
From: Robert D. Upton, P.E., Director of Engineering  
CC: Trent Epperson, Assistant City Manager  
Skipper Jones, Assistant Director of Capital Projects  
Richard Mancilla, P.E., Assistant Director of Engineering  
Date: March 2, 2017  
Re: SH288 Frontage Road between CR59 and FM518

3/2/17  
To: Mayor and City Council members  
FYI. Project independent of the 288 tollway work in Brazoria County that we are advancing within the TxDOT right-of-way to create a frontage road on east side of 288, south of FM 518 to CR 59. Clay

## Background

Currently this project was selected in the 2015 Houston-Galveston Area Council Transportation Improvement Program (TIP) and proposed for funding in 2025. This road network would provide some relief from SH288 for vehicles traveling from CR59 to FM 518 and provide managed access points for development east of SH 288 with some relief of congestion at the FM 518/CR94 intersection from the shopping center.

In an attempt to accelerate this project the City and Pearland Economic Development Corporation (PEDC), each budgeted half of the design costs in Fiscal Year 2017. However before starting the design work, we need an Advanced Funding Agreement (AFA) with TxDOT for them to review and process our environmental document and engineering plans. Once the design and environmental clearance is completed, we will have a “shovel-ready” project ready to move up in the TIP schedule when other TIP projects do not meet TxDOT’s annual letting schedule.

The City met with TxDOT in October and December 2016 to discuss developing the AFA, propose that this project be moved up and how we can partner together to make this happen.

Several concerns were brought forth by TxDOT regarding drainage, right-of-way, space concerns with the SH288 entrance/exit ramps reversal, concern with how the ramps interact with the SH288 Toll Lanes project, concerns with how the project affects traffic globally, and the possibility of development providing additional right-of-way and funding. The City took these concerns and determined that the most advantageous path forward would be to develop a technical memorandum discussing a broad overview of the proposed project, schematics and analysis to assist in addressing the TxDOT concerns.

To assist in quick development of this technical memorandum to address the TxDOT concerns, the City contracted with HDR, Inc. HDR is the SH288 Toll Lanes Program

Manager for Brazoria County, had previously prepared schematics for the frontage road, has the knowledge of where the alignment of entrance and exit ramps are located and have the traffic demand information to evaluate the congestion benefits.

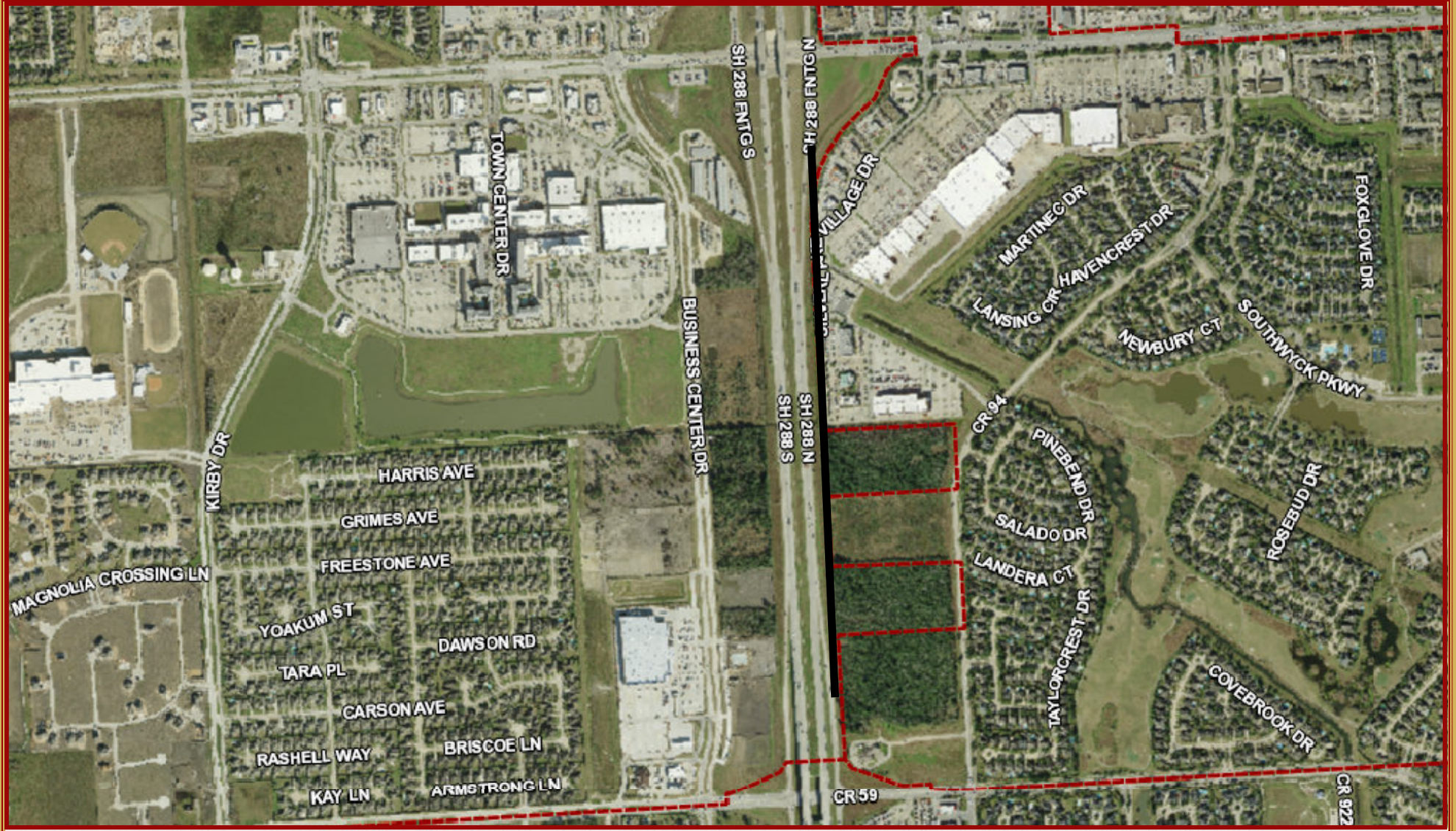
### **Update**

Currently staff has received a draft technical memorandum from HDR that includes the following:

1. A traffic analysis indicating that there are two ramp options available for the frontage road configuration.
2. A U-turn movement at the CR 59 intersection.
3. A brief analysis of the impacts at FM 518 intersection

Staff has reviewed the document and is preparing comments to return to HDR. We will be expecting the final report in a couple of weeks. This will then coincide with a proposed meeting with TxDOT to discuss this project and the AFA. Part of the discussions and before moving forward with the project, we plan to get agreement with TxDOT on limited access points for the existing and future developments along the east side of the frontage road.

# 288 FRONTAGE MAP



1:12,000

1 inch = 1,000 feet



NORTH

This product is for informational purposes only and may not be prepared or be suitable for legal, engineering, or surveying purposes.

MAP PREPARED: MARCH 1, 2017  
GIS DEPARTMENT

