

5/2/2018

To: Mayor and City

Council members

Good trail connection project along Clear Creek, picking up from existing section to Kirby Drive, north of our Reflection Bay water treatment plant, going to bid and starting construction in October. Clay

Shadow Creek Ranch Trail (Kingsley Dr to Kirby Dr)



Scope: Construction of a 10 foot wide hike and bike trail along the southern bank of Clear Creek beginning on the east side of Kingsley Drive and extending east approximately 1,300 feet terminating at Kirby Drive. Project will include shaded seating areas, bike facilities, educational and/or themed signage and may include improvements to the existing trail head parking area.

Justification: The Parks and Recreation Plan that was adopted by Council in December of 2005 lists the hike and bike trails as the number one priority for acquisition and development. This project is included in the 2013-2014 TIP and will be 80% federally funded.

Project Manager: Cara Davis

Designer: Talley Landscape Architects, Inc.

Schedule Info:

	<i>Base Line</i>	<i>Current</i>
<i>Design Start</i>	February-17	February-17
<i>Proposed Bid Start</i>	July-18	
<i>Proposed Construction Start</i>	October-18	
<i>Proposed Construction Completion</i>	April-19	

Budget Info:

Funding Sources	Series	To Date	Future	Total Budget
Certificates of Obligation	2016	324,951		324,951
Certificates of Obligation			380,000	380,000
General Obligation Bonds				-
General Obligation Bonds				-
W/S Revenue Bonds				-
W/S Revenue Bonds				-
General Revenue - Cash		38,994		38,994
Other Funding Sources - TxDOT		96,758	1,474,755	1,571,513
Total Funding Sources		460,703	1,854,755	2,315,458

Expenditures	To Date	Future	Total
PER			-
Land			-
Design	246,597		246,597
Construction Contract		1,206,510	1,206,510
Construction Management/Inspection		200,000	200,000
Construction Materials Testing		15,000	15,000
Construction	55		55
FF&E		138,000	138,000
Total Expenditures	246,652	1,559,510	1,806,162

Project Balance/Contingency	509,296
------------------------------------	----------------

Highlights:

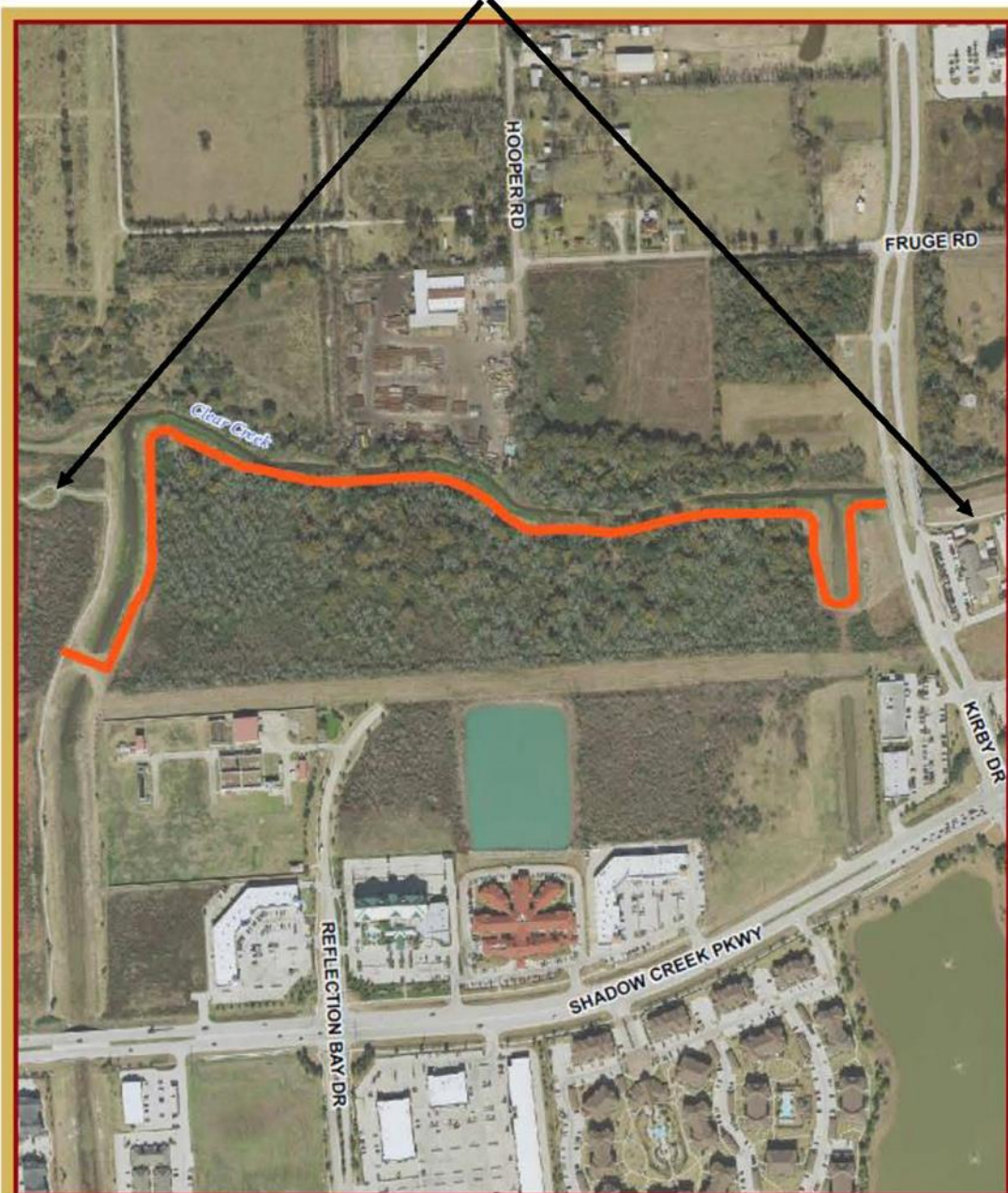
Projects Staff met with TxDOT, BDD4 and the design team on April 25th to perform a group review of the 90% plan set in preparation for the final 95% submittal. Comments were made on the plans and the project manual which will be addressed and the final 95% plan submittal will be submitted to TxDOT by May 18th for the final review and signatures. An internal meeting with Parks and Engineering staff is scheduled for April 30th to review the package and make any adjustments before the final submittal to TxDOT on May 18th. A concurrent submittal will be made to BDD4 for approval at their June 2018 Commissioners Court meeting.

The project is scheduled for a July 2018 letting and will be advertised as soon as the Letter of Authority (LOA) is received from TxDOT. We expect to have concurrence on the Bid Award to take the construction contract to City Council in late August or early September 2018. The construction NTP will follow once TxDOT has approved all pre-construction submittal requirements from the contractor.

Previous Memos: 11/17/16, 5/25/17, 10/5/17, 11/9/17

Project Location Map:

Existing Shadow Creek Ranch Nature Trail



CITY OF PEARLAND
Shadow Creek Ranch Trail



1 inch = 425 feet
0 200 400 600
Feet

MAP PREPARED: AUG 2016
GIS DEPARTMENT

This product is for informational purposes and may not have been prepared for or be suitable for legal, engineering, or surveying purposes. It does not represent an on-the-ground survey and represents only the approximate relative location of property boundaries.