



Memo

To: Clay Pearson, City Manager

From: Andrea Brinkley, Project Manger

Cc: Jon Branson, Deputy City Manager
Trent Epperson, Assistant City Manager
Cynthia Pearson, Interim Finance Director
Susan Polka, P.E., Director of Engineering and Capital Projects
Eric Wilson, Public Works Director
Skipper Jones, Assistant Director, Projects

Date: June 10, 2016

Re: Surface Water Plant

6/14/2016

To: Mayor and City

Council members

Please review and share any questions regarding the large water utility upgrade to build a surface water treatment plant and distribution system. Clay

Status Update and Background

This is the second memo update, and includes the project background, future activities and coordination of the project. Previous Memo: 2/26/16.

Background

The Surface Water Plant is included in the FY2016 Capital Improvement Program (CIP) and will be a multi-year project, with a duration through 2023. The overall project includes preliminary design, pilot testing, final design, and construction of the first phase (10 MGD) Surface Water Treatment plant and associated water conveyance infrastructure. The Surface Water Plant will treat raw water from the Gulf Coast Water Authority (GCWA) canal and will distribute the water throughout the City via four (4) water transmission lines. This work is estimated to be \$145 million in studies, design and construction. In the future, a second 10 MGD expansion is planned.

Owner's Representative Role

In order to manage the various stages and work that will need to be done, an Owner's Representative with expertise in this technical area is proposed to provide assistance to staff. This augments current staff, provides the capacity needed to complete the work, and provides oversight of the project. In this case, the staff oversight will be provided via the Engineering and Capital Projects Department.

The Owner's Representative will provide a broad and continuous role to assist with the project as it moves from preliminary studies and funding assistance applications to design and construction of facilities. The Owner's Representative is to remain an independent and impartial advocate for the City and its' goals, and assist staff with the execution of tasks related to the overall project. The Owner's Representative will assist staff in data gathering, environmental assessments, site planning, the application of the selection criteria for the selection of professional services required for various work efforts, the

technical review of proposed infrastructure, selection of the most cost effective treatment process, and construction management.

The contractual mechanism that is recommended by staff is a Master Service Agreement (MSA). The MSA is recommended due to the size, scope and time duration that this project will require. The MSA will include authorization of work by Task Order, with each task order including a scope, schedule and cost. Task Orders will be submitted to Council for consideration as the scope and cost necessitate

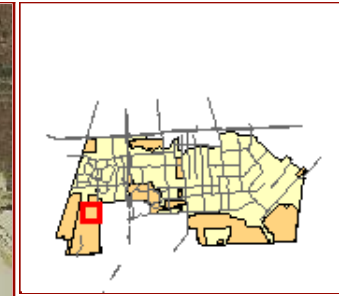
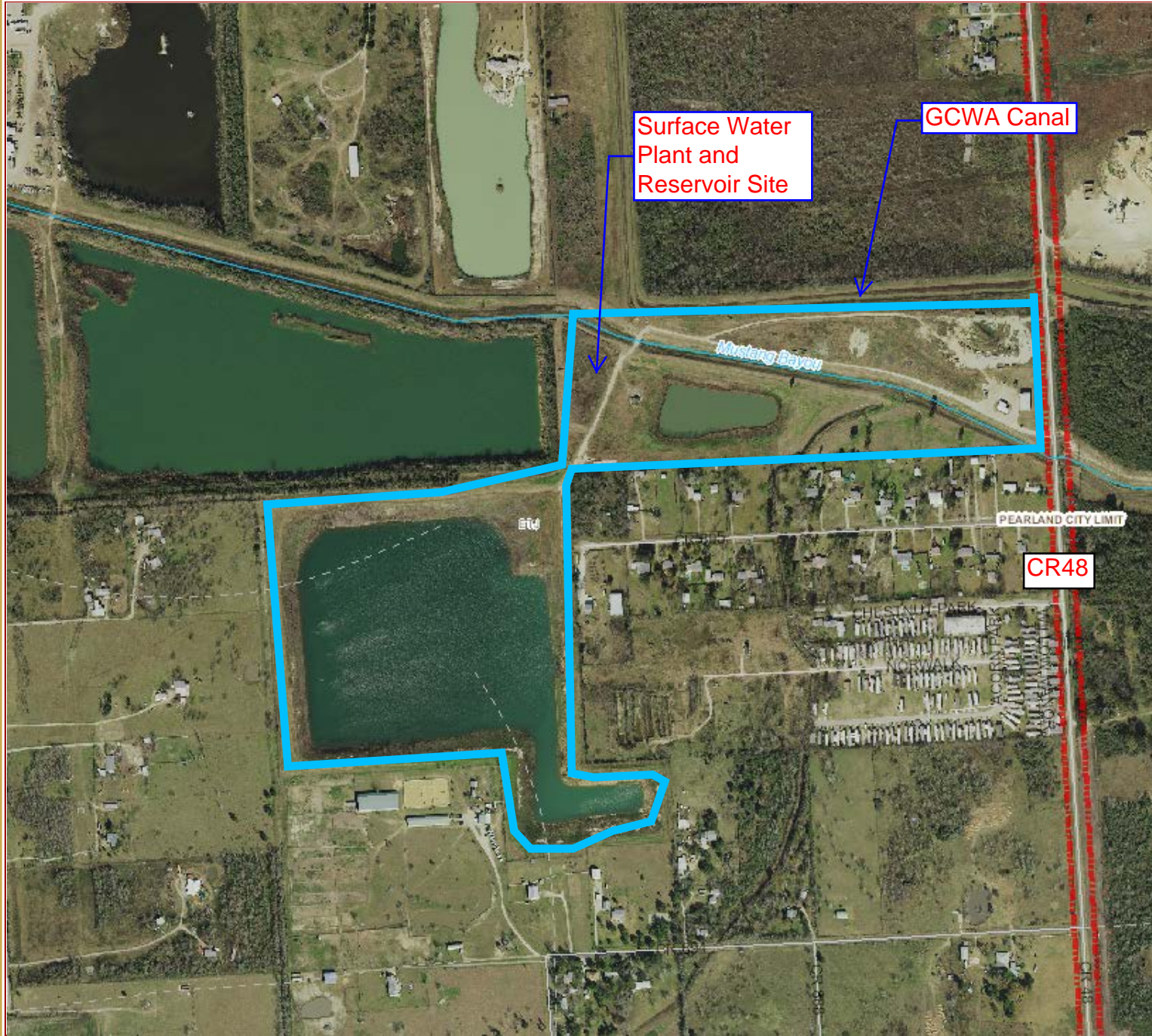
Recent Activities

- Staff submitted initial abridged applications for the State Water Implementation Fund for Texas (SWIFT) and the Drinking Water State Revolving Fund (DWSRF) programs. Both programs are administered by the Texas Water Development Board.
- Staff interviewed Owner's Representatives and made a selection in March 2016
- Council approved the submittal of full applications to both funding assistance programs in May 2016.
- Staff negotiated a Master Services Agreement for Owner's Representative Services for the Surface Water Plant.

Upcoming Activities

- Staff will begin the determination process for the most favorable funding assistance program over the next 2-3 months. Staff will work very closely with the Texas Water Development Board to select and begin the formal process of securing the funding.
- On June 27th Council will consider the Master Service Agreement for Owner's Representative services with Ardurra Group LLC. The first Task Order will include: funding application assistance, the development of an engineering feasibility study and report, design consultant request for proposals and selection assistance, water quality review assistance, overall water system conveyance analysis and project management services.

Surface Water Plant Location Map

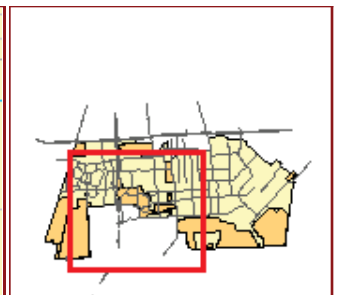
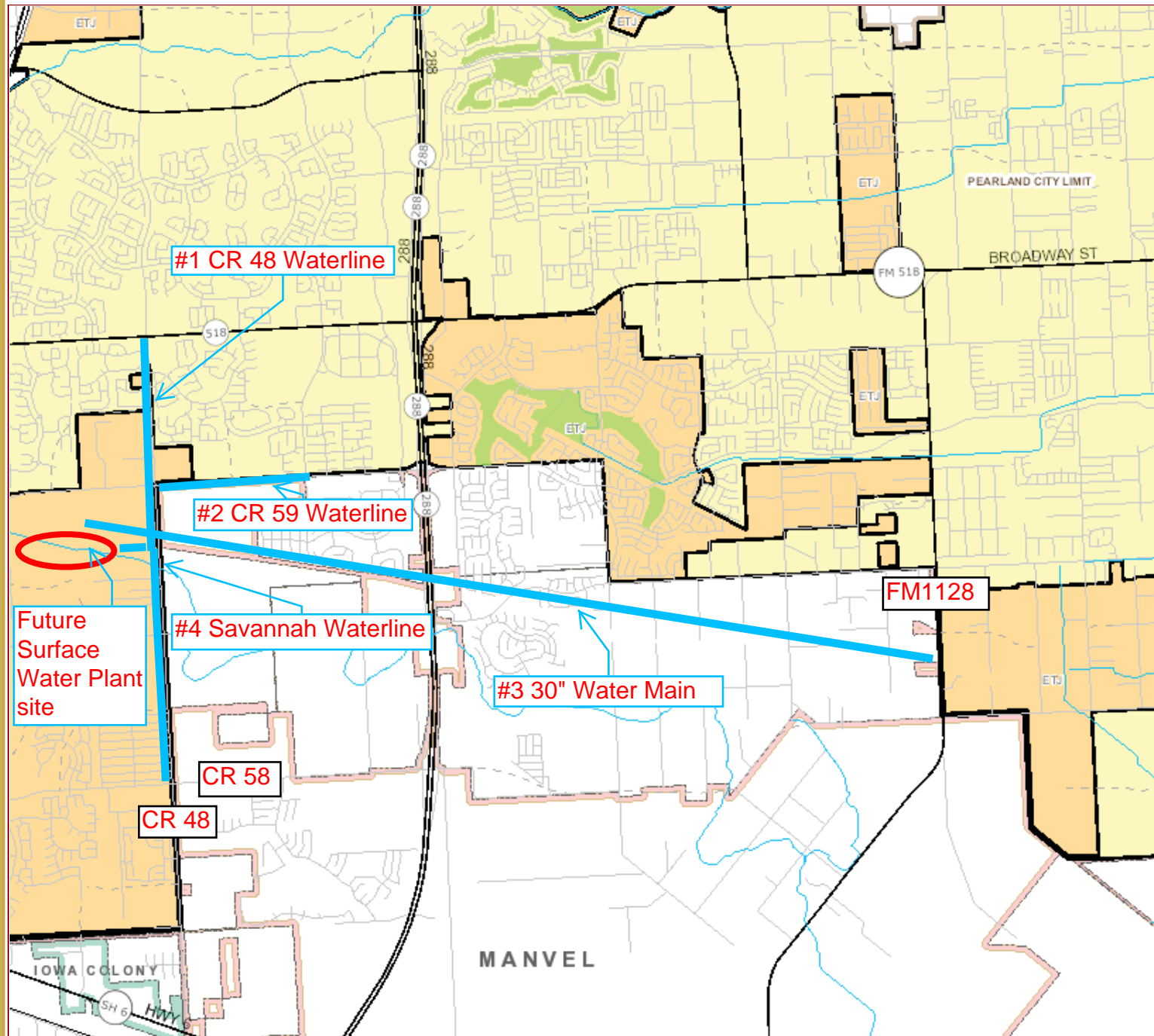


This product is for informational purposes and may not have been prepared for or be suitable for legal, engineering, or surveying purposes. It does not represent an on-the-ground survey and represents only the approximate relative location of property boundaries.

Scale 1:8,033
1 in = 669 ft
May 04, 2016



Surface Water Plant Transmission Lines



- #1 - CR 48 Waterline (Surface Water Plant to Broadway)
- #2 - CR 59 Waterline (CR 48 to Kirby Dr)
- #3 - 30" Water Main (Surface Water Plant to FM 1128 along American Canal)
- #4 - Savannah Waterline (Surface Water Plant to CR 58)



This product is for informational purposes and may not have been prepared for or be suitable for legal, engineering, or surveying purposes. It does not represent an on-the-ground survey and represents only the approximate relative location of property boundaries.

Scale 1:57,540
 1 in = 4,795 ft
 May 03, 2016

NORTH