

9/20/2017

To: Mayor and City Council members
FYI on wastewater system upgrade/consolidation of lift station and piping. Clay



Mykawa Lift Stations

Scope: Installation of 18" gravity sewer on Hatfield Rd; replacement and relocation of the Orange-Mykawa Lift Station with installation of a 12" gravity sewer line along Mykawa from Orange to Walnut for approximately 3,400 lf and 8" force main from Mykawa west 2500 lf to Hatfield Rd; abandonment of Shank Street Lift Station; replacement and relocation of Mykawa-Scott Lift Station, installation of new 8-inch force main for approximately 2,500 lf from Mykawa to SH35, and new 8-12-inch gravity line approximately 3,450 lf along Mykawa from Scott to Shank. Project will be coordinated with Mykawa Road construction.

Justification: Orange-Mykawa Lift Station will require a major rehabilitation within the next five years and is poorly located for servicing the area. This project will eliminate an existing inverted siphon in a gravity line and relocate the Orange-Mykawa Lift Station. In addition, the project will eliminate the Shank Street Lift Station and relocate the Scott Street Lift Station presently in conflict with the future Mykawa Road Widening.

Project Manager: Ryan McKinnis

Designer: 5Engineering, LLC

Contractor: N/A

Budget Info:

	<i>Budget</i>	<i>Encumbered</i>	<i>Change Orders</i>	<i>Balance</i>
<i>Prelim. Eng.</i>	\$300,000.00	\$93,712.00		\$206,288.00
<i>Land</i>	\$300,000.00			\$300,000.00
<i>Engineering</i>	\$596,300.00	\$481,878.00	\$71,435.00	\$42,987.00
<i>Construction</i>				\$0.00
<i>FF&E</i>				\$0.00
<i>Contingency</i>	\$100,000.00			\$100,000.00
Total	\$1,296,300.00	\$575,590.00	\$71,435.00	\$649,275.00

Schedule Info:

	<i>Base Line</i>	<i>Current</i>
<i>Design Start</i>	May-16	May-16
<i>Proposed Bid Start</i>	August-17	June-18
<i>Proposed Construction Start</i>	August-18	
<i>Proposed Construction Completion</i>	April-19	

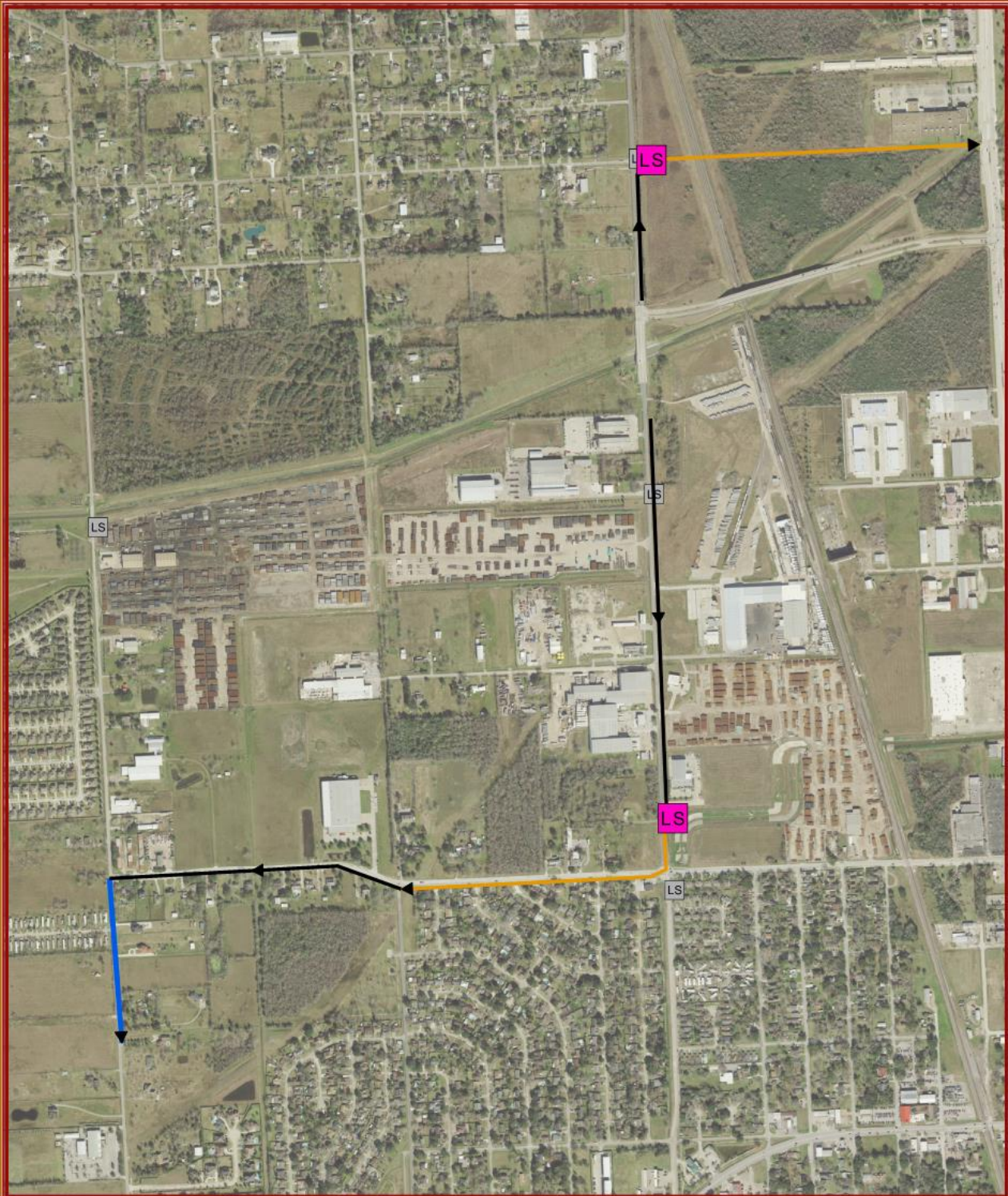


Highlights:

- Previous amendment was presented to City Council for consideration and approval on February 13, 2017. This amendment changed the proposed scope to include the relocation and replacement of the Orange-Mykawa Lift Station, replacement of existing gravity sewer with larger capacity, and additional forcemain as recommended in the Preliminary Engineering Report.
- Staff has received the 60% engineering design, and comments have been returned to the consultant for incorporation in the 90% plans.
- The previously proposed design for the 6" force main has been upsized to an 8" force main for additional future capacity.
- Easement survey is scheduled to be completed as of September 20. The easement survey will define the need for any additional right-of-way necessary for the construction of the proposed lift stations and the alignment of the proposed gravity and sewer forcemain.
- Current schedule projects the potential to bid the project in June of 2018.

Previous Memos: 02/02/2017, 4/28/2016

Proposed Network



LS Exst. Lift Sta.
 → 8" FM
 → 12" Sewer
 → 18" Sewer
LS Prop. Lift Sta.



This product is for informational purposes and may not have been prepared for or be suitable for legal, engineering, or surveying purposes. It does not represent an on-the-ground survey and represents only the approximate relative location of property boundaries.
 MAP PREPARED: JUNE 2017
 CITY OF PEARLAND GIS DEPARTMENT