



Project Update

To: Pearland Police Department
Pearland Public Works
Pearland ISD

Pearland Fire Department
Pearland Communications
U.S. Postal Service

From: Jennifer Lee
Project Manager, Engineering & Capital Projects

Date: August 29, 2019

Subject: HUGHES RANCH ROAD (CULLEN TO SMITH RANCH RD.) CONSTRUCTION PROJECT UPDATE

The City accepted a request from the contractor to shut down the project until utility conflicts have been addressed. **The shutdown duration will be approximately 8 to 12 weeks, depending on weather.**

To prevent possible flooding and standing water conditions, road projects must maintain positive drainage throughout construction. To achieve positive drainage, a critical task for the contractor is to install drainage pipes to convey runoff away from homes and infrastructures. When the drainage installation began at the west end of the project, buried underground utility lines were encountered that prevented the installation of the pipes at the required elevation to drain properly. Further investigations determined that along the alignment, several additional conflicts would impede the installation of the drainage pipes and the Sound Wall.

All of the private utility companies documented that the lines had been either relocated, removed or abandoned prior to the onset of construction. Due to changes in staff and procedures, the utility companies addressed some of the conflicts without completing all of the work. The final construction drawings do not show the conflicts based on documents previously provided from the utility companies stating all conflicts were addressed as of November 2018.

The project team is coordinating with the utility companies to schedule the relocation of the conflicting lines. Staff met with utility representatives on August 2nd, 16th, and 28th to map out a plan to expedite the relocation work. **The removal and/or the relocation of the utility conflicts is expected to take approximately 8 to 12 weeks, weather permitting. This date is a worst case scenario date based on the fact that September and October are historically the most active part of the hurricane season.** The project team is taking into consideration the possibility of the redistribution of the utility company resources in the event of a major storm along the Gulf coast. When the utilities are cleared, the contractor can begin to set the drainage in place in preparation of reconstructing the roadway and the Sound Wall installer can resume setting the wall in place.

Staff apologizes for the inconvenience this shutdown will cause. We will provide additional updates as they become available. If additional information is needed please contact the Hughes Ranch Road Project Manager, Jennifer Lee at jlee@pearlandtx.gov, office phone: 281.652.1760, or mobile phone: 281.924.2005.

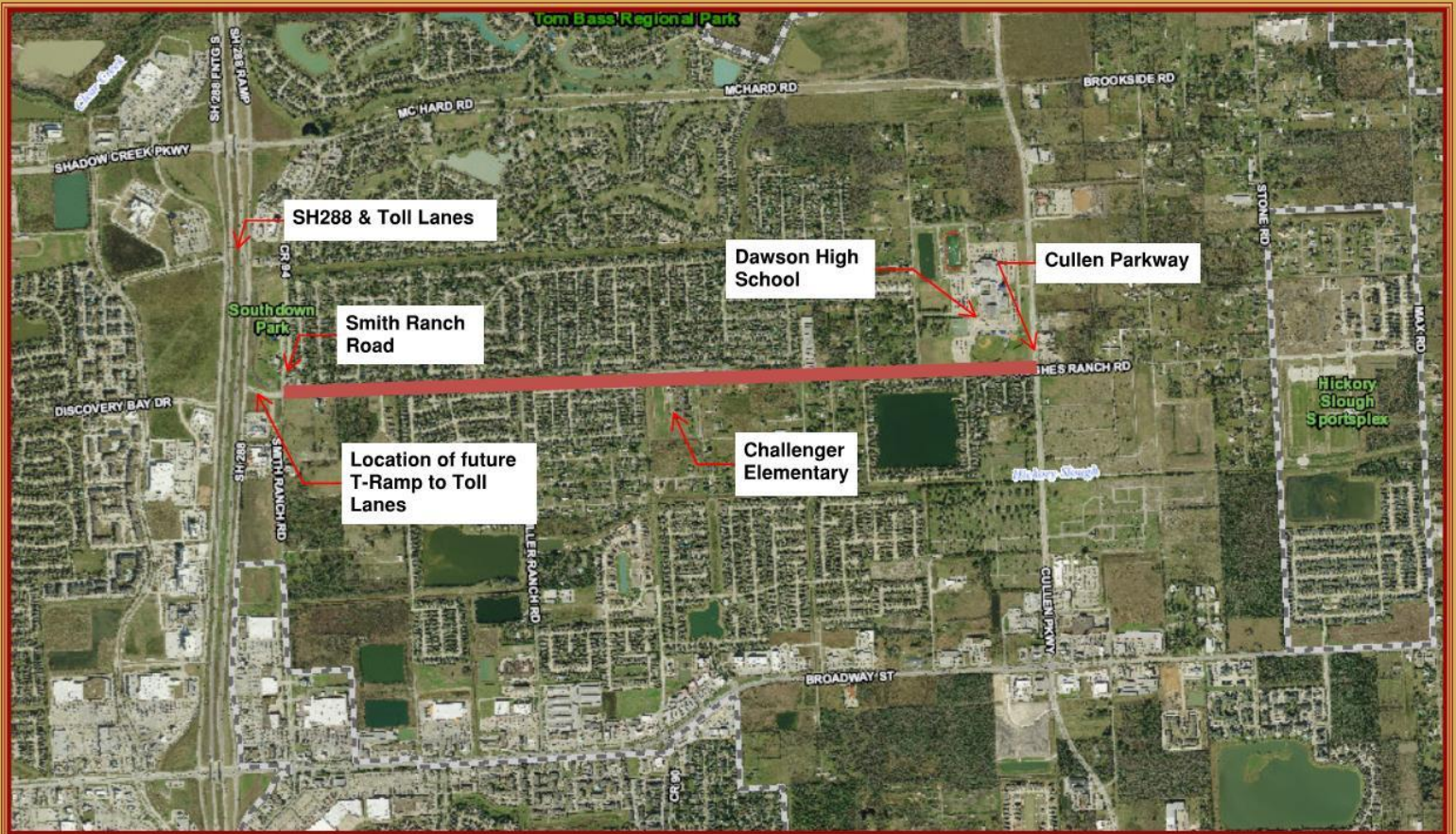
Thank you,

Jennifer Lee
Project Manager

End of Update

Hughes Ranch Road

HUGHES RANCH ROAD (CULLEN TO SMITH RANCH ROAD)



1:24,000

1 inch = 2,000 feet



This product is for informational purposes only and may not be prepared or be suitable for legal, engineering, or surveying purposes.

MAP PREPARED: OCTOBER 4, 2017
GIS DEPARTMENT