



2019 Bond Election

Understanding the Propositions



pearlandtx.gov

Proposition A

Drainage Improvements and Facilities

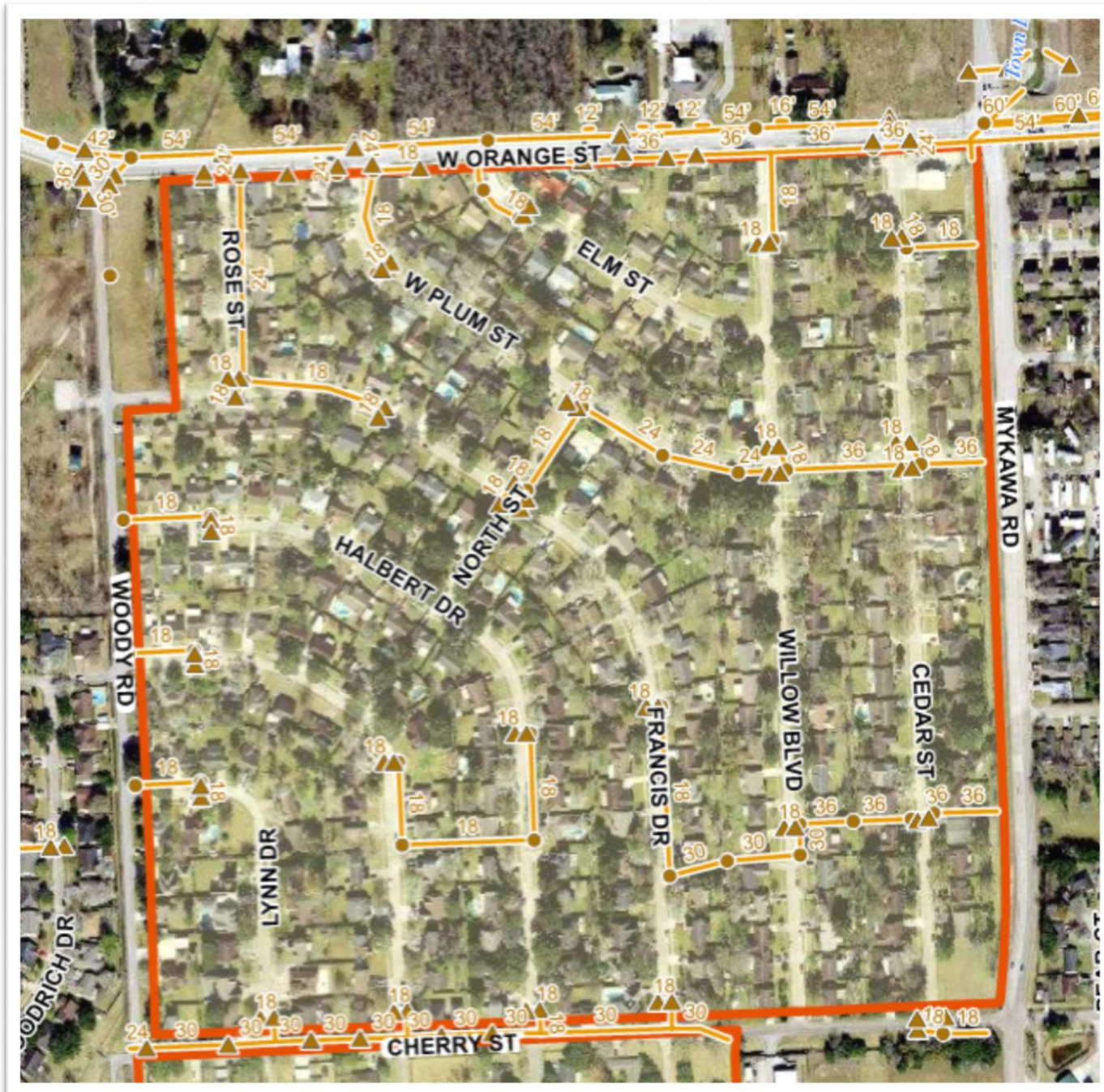
\$28,498,000

Willowcrest Subdivision Drainage Improvements

\$15,926,000



pearlandtx.gov



- Scope – Removal and replacement of sanitary sewer system, inlets and street reconstruction for the subdivision.
- Justification – History of repetitive localized flooding. Harvey Drainage Assessment

West Lea Drainage Improvements

\$5,492,000



pearlandtx.gov



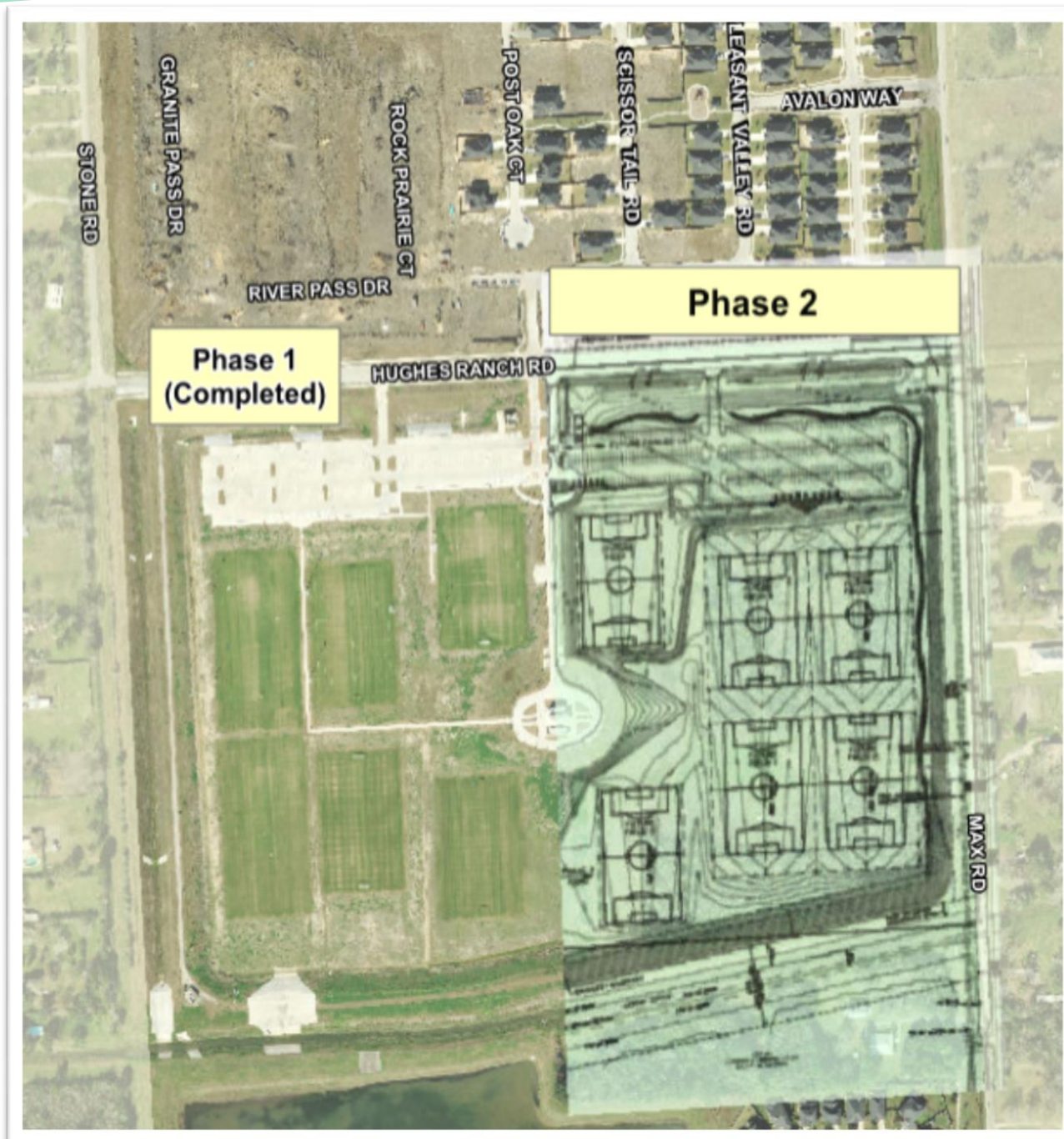
- Scope - Improvements will require removal / replacement of driveway culverts, opening covered ditches, widening and regrading of internal ditches. Regrade the roadside ditch along 1128
- Justification – Repetitive localized flooding and Harvey Drainage Assessment

Hickory Slough Detention Pond Ph II

\$4,239,000



pearlandtx.gov



- Scope - Construction of the final phase of the detention pond including the final build out of the storm water lift station. The pond provides for a total of 95 acre feet of detention.
- Justification – Preliminary Master Drainage Plan identifies the need to expand this Regional Detention and Parks Master Plan

Mimosa Acres Drainage Improvements

\$1,690,000



pearlandtx.gov



- Scope - Removal/replacement of driveways, driveway culverts, and ditch re-grading. Asphalt overlay of the roads due to drainage improvements.
- Justification – History of repetitive localized flooding. Harvey Drainage Assessment

Piper Rd Drainage

\$1,151,000



- Scope - Drainage improvements from FM 518 to Fite Road re-grading of ditches and culverts. Direct flows south to Mary's Creek
- Justification – Repetitive localized flooding. Harvey Drainage Assessment

Proposition B

Street Improvements

\$34,816,000

Bailey Road Expansion (Veterans Dr to Main)

\$19,545,000



pearlandtx.gov

- Scope - This project consists of widening the current two lane roadway and bridge to a four lane boulevard section to match existing widths.
- Justification – Traffic Management Plan, provide continuous 4-lane SH35 to SH288



Street Reconstruction Program

\$10,875,000



pearlandtx.gov

- Scope - Rehabilitation, reconditioning and reconstruction of eligible streets throughout the City as recommended by the Pavement Condition Assessment. Neighborhoods identified: Linwood Oak, Orange Circle, Sleepy Hollow, Sherwood
- Justification – Pavement Condition Assessment Program. Current general fund operational budget allocations do not provide adequate funding to recapitalize existing streets. Per the PCA an allocation of \$4.0M annually is needed

Pearland Pkwy Traffic Circle Improvements

\$3,272,000



pearlandtx.gov

- Scope - Design and construct improvements to the circular rotary to provide a more conventional geometry with a two lane roundabout with an outside by-pass lane.
- Justification – Pearland Parkway Corridor Improvement Plan which will be vital with the extension of McHard road and the increased traffic volume that will result.



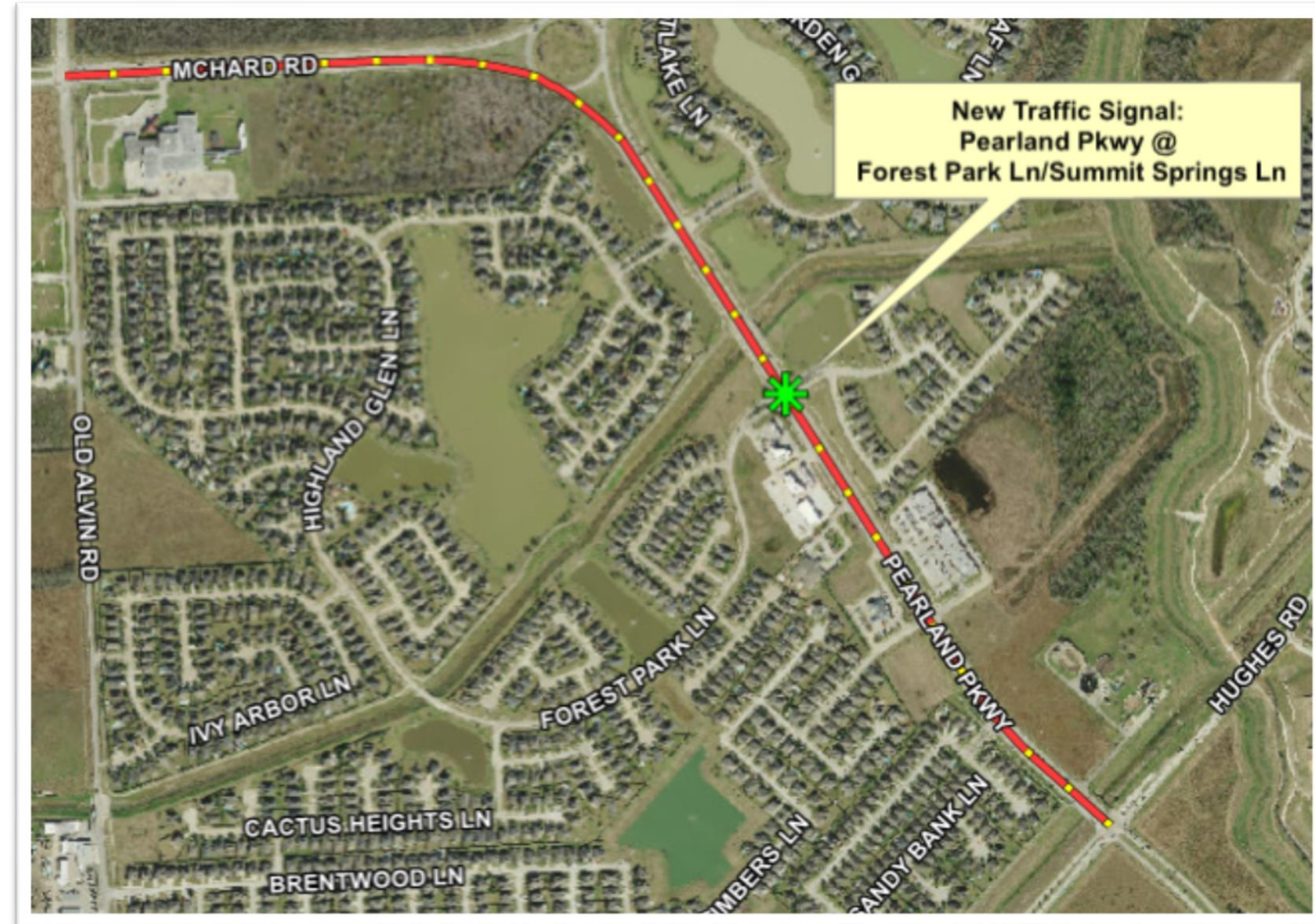
Pearland Pkwy Traffic Improvements

\$1,124,000



pearlandtx.gov

- Scope - Construction of a new traffic signal and intersection improvements at the intersection of Forest Park Lane/Summit Springs Lane and the installation of fiber to connect into the Intelligent Traffic System.
- Justification – TMUTCD Traffic Warrant Analysis justified the requirement



Proposition C

Parks and Recreation Purposes

\$2,500,000

Park Equipment Replacement Program

\$2,500,000



pearlandtx.gov

- Scope - This programmatic replacement program is to maximize the lifespan of the park system offerings. Initial locations are Southdown, Centennial, Independence Dog Park, Creekside Park, Aaron Pasternak Memorial Park, Corrigan, Zychlinski Park, and Woody Street Park.
- Justification – Parks Master Plan and current general fund operational budget allocations do not provide adequate funding to recapitalize existing park equipment to enhance the user experience and provide a safe environment.

Proposition D

Animal Services and Adoption Center

\$12,875,000

Animal Services Shelter

\$12,875,000



pearlandtx.gov

- Scope - Construct an animal shelter for canines, felines, and a quarantined area. Including personnel work areas, veterinary service room, and adoption area with rooms and reception.
- Justification – Based upon current industry standards, City growth, future population projections, and the volume of animals, an updated facility with the appropriate areas to the needs



Proposition E

Fire Department Training Burn Building

\$1,300,000

Fire Training Burn Building Ph I

\$1,300,000



pearlandtx.gov

- Scope – Construction of a two-story live fire burn building. Project will include stairs, multiple rooms (similar to residents), internal stairs, and sloped roof.
- Justification – Burning buildings are complex hazards and Pearland’s firefighters need to be continually educated and trained to have the skills to face these challenges.

