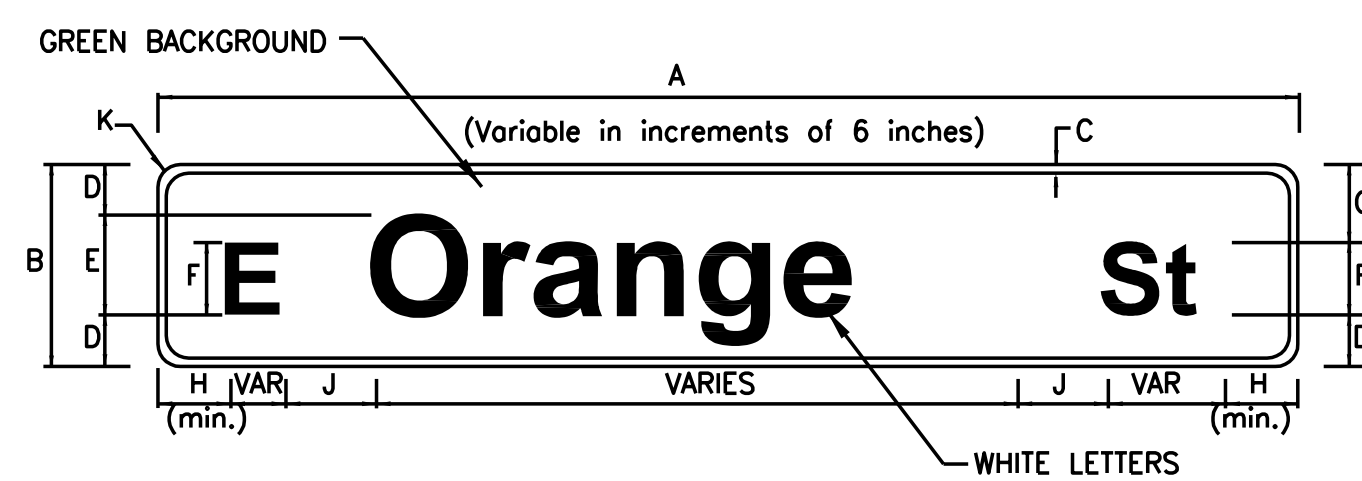
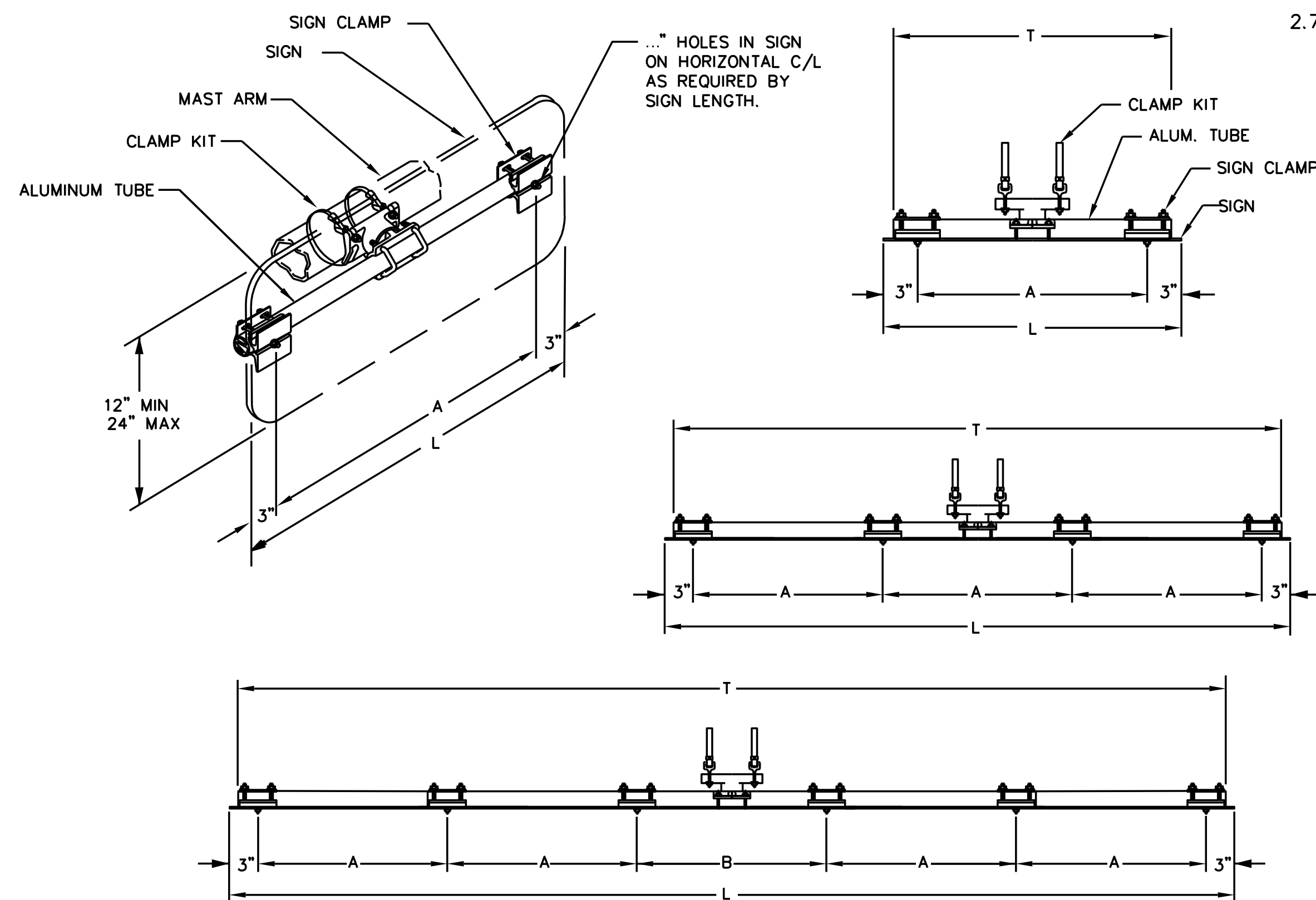


A	B	C	D	E	F	G	H	J	K	L
VAR 18	.5	4	10CV-3W	4	4CV-3W	2	4	4	1.5	
VAR 24	.75	6	12CV-3W	4.5	6CV-3W	3	5	5	1.5	



A	B	C	D	E	F	G	H	J	K
VAR 18	.5	4	10CV-3W	7CV-3W	7	5	7.5	1.5	
VAR 24	.5	6	12CV-3W	8CV-3W	10	6	9	1.5	

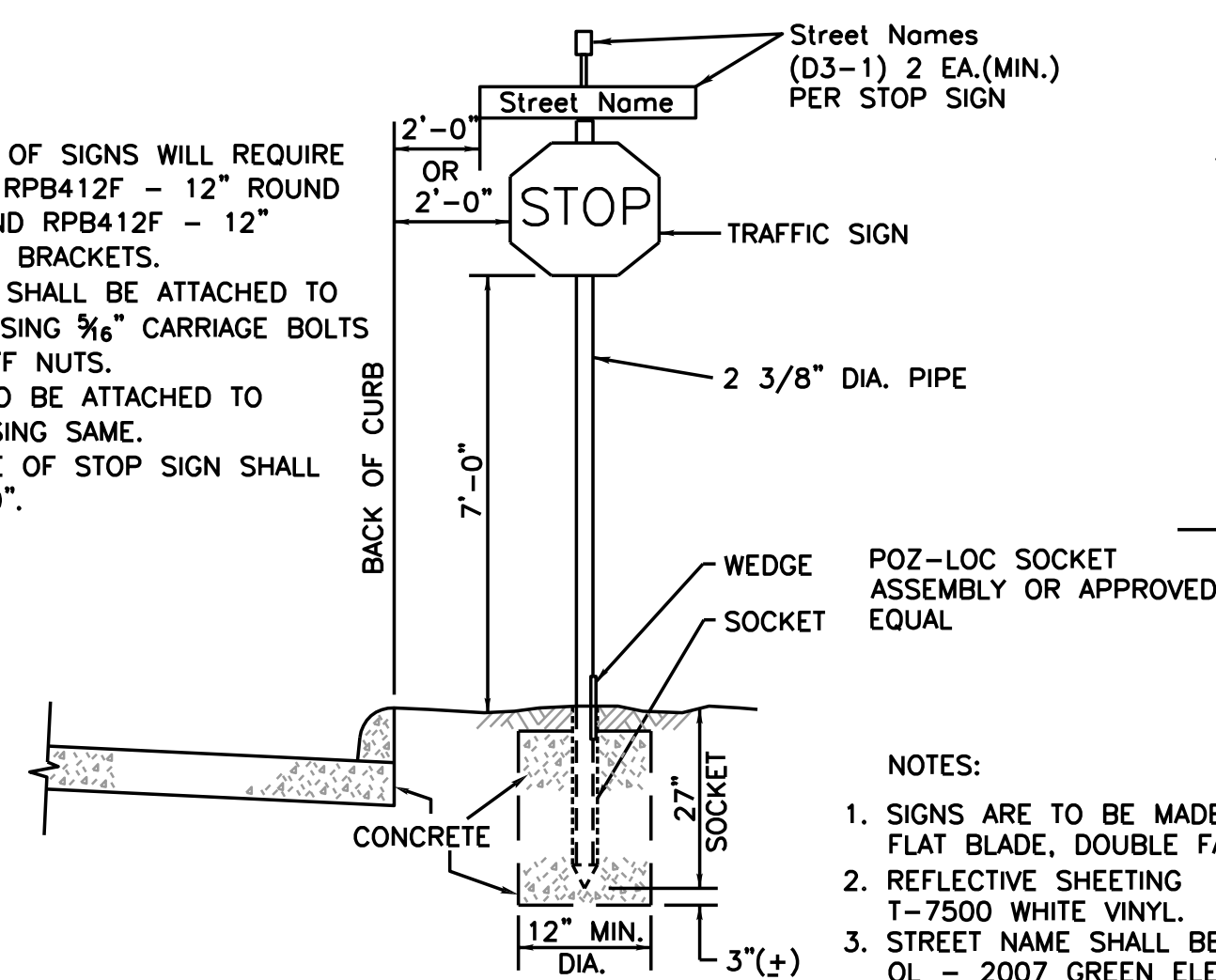
DETAIL OF OVERHEAD MOUNTED SIGN



OVERHEAD MOUNT STREET SIGN DETAIL

NOTES:

- INSTALLATION OF SIGNS WILL REQUIRE THE USE OF RPB412F - 12" ROUND POST CAP AND RPB412F - 12" CROSS PIECE BRACKETS.
- POSTS CAPS SHALL BE ATTACHED TO SIGN POST USING 3/16" CARRIAGE BOLTS AND 3/16" TUFF NUTS.
- SIGNS ARE TO BE ATTACHED TO BRACKETS USING SAME.
- MINIMUM SIZE OF STOP SIGN SHALL BE 30" X 30".

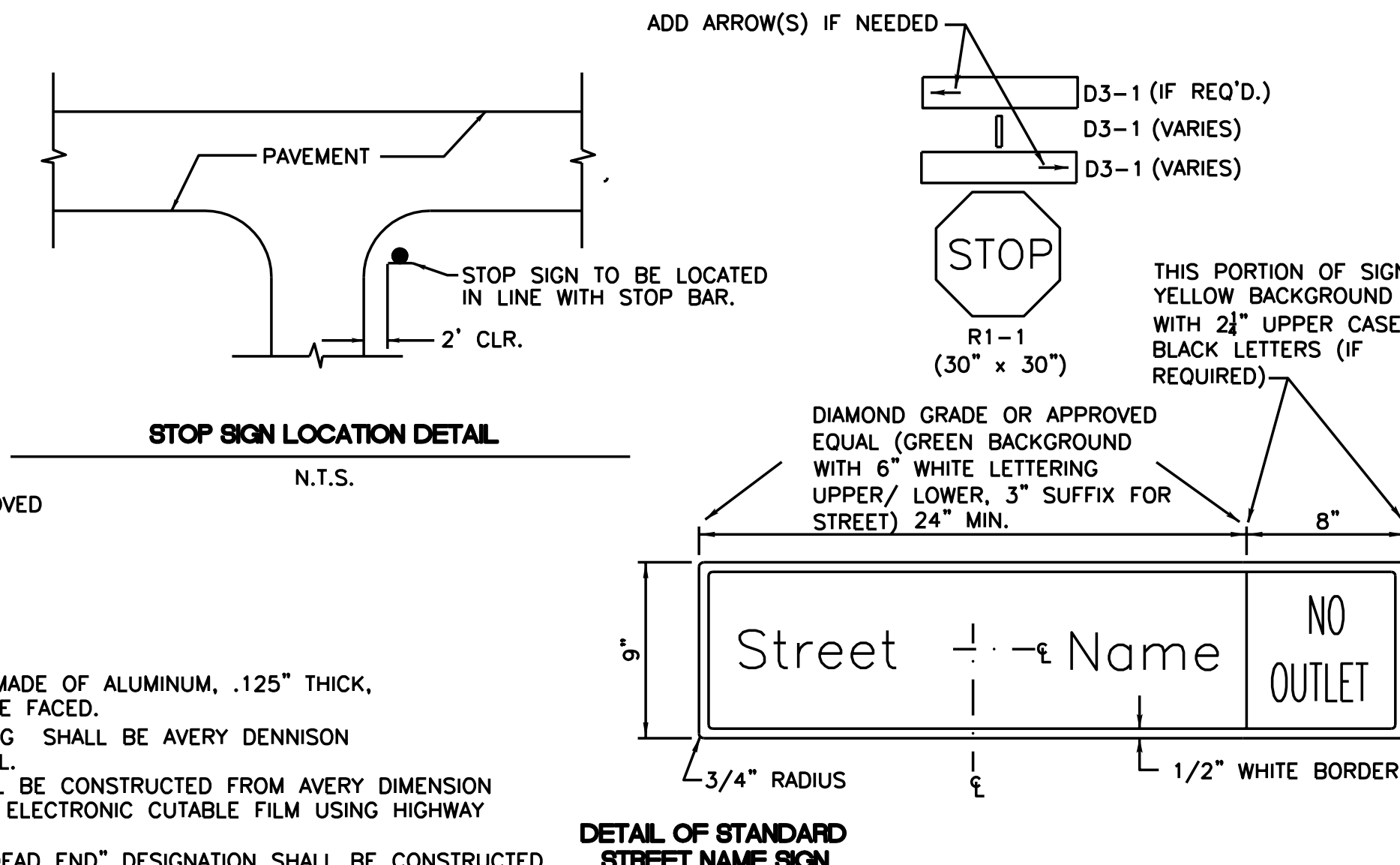


TYPICAL SIGN MOUNT DETAIL

N.T.S.

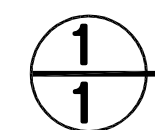
NOTES:

- SIGNS ARE TO BE MADE OF ALUMINUM, .125" THICK, FLAT BLADE, DOUBLE FACED.
- REFLECTIVE SHEETING SHALL BE AVERY DENNISON T-7500 WHITE VINYL.
- STREET NAME SHALL BE CONSTRUCTED FROM AVERY DIMENSION OL - 2007 GREEN ELECTRONIC CUTABLE FILM USING HIGHWAY B SERIES FONT.
- "NO OUTLET" OR "DEAD END" DESIGNATION SHALL BE CONSTRUCTED FROM AVERY DENNISON BLACK PC - 500-190 - 0 VINYL.
- ARROW SHALL BE 1 1/2" X 4 1/2" LONG OVERLAPED WITH AVERY DENNISON OL - 2001 YELLOW ELECTRONIC CUTABLE FILM 5 1/2" X 8".
- STREET NAME SHALL HAVE A 3/4" X 3/4" CITY OF PEARLAND DATING STICKER WITH MONTH AND YEAR OF MANUFACTURER OF EACH SIGN.



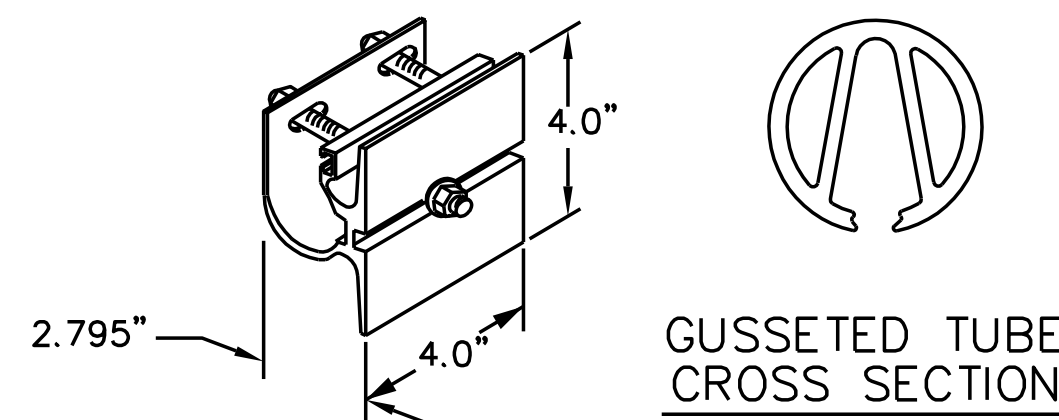
DETAIL OF STANDARD STREET NAME SIGN

N.T.S.



STREET SIGN DETAILS

SIGN CLAMP DETAIL



GUSSETED TUBE CROSS SECTION

SIGNS (1'-6" to 3'-0" Long)

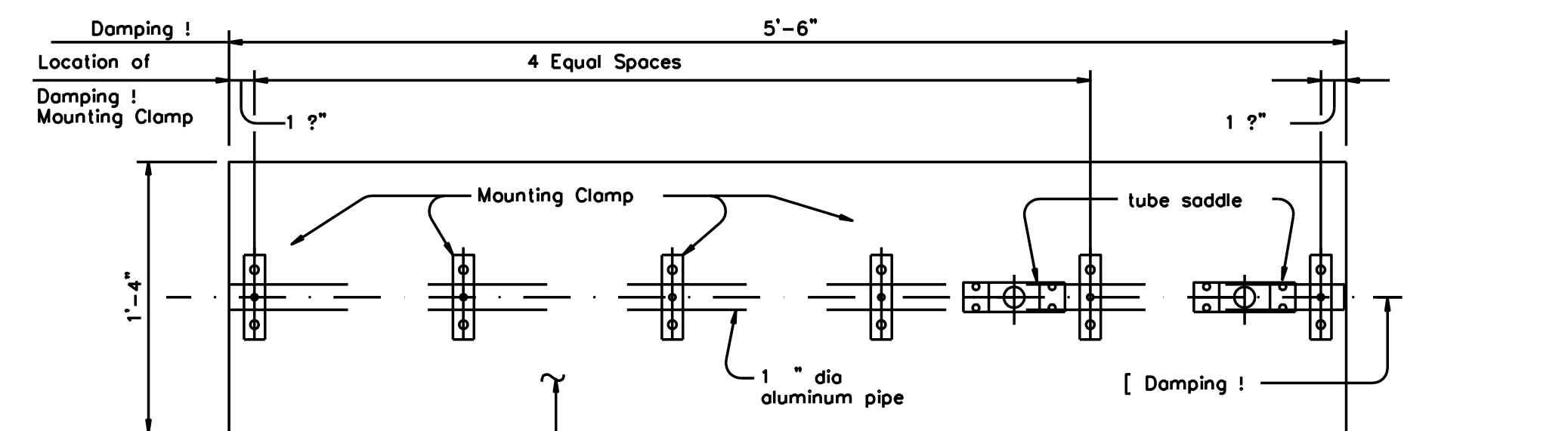
SIGN LENGTH (L)	TUBE LENGTH (T)	A
1'-6"	16"	12"
2'-0"	22"	18"
2'-6"	28"	24"
3'-0"	34"	30"

SIGNS (3'-6" to 8'-0" Long)

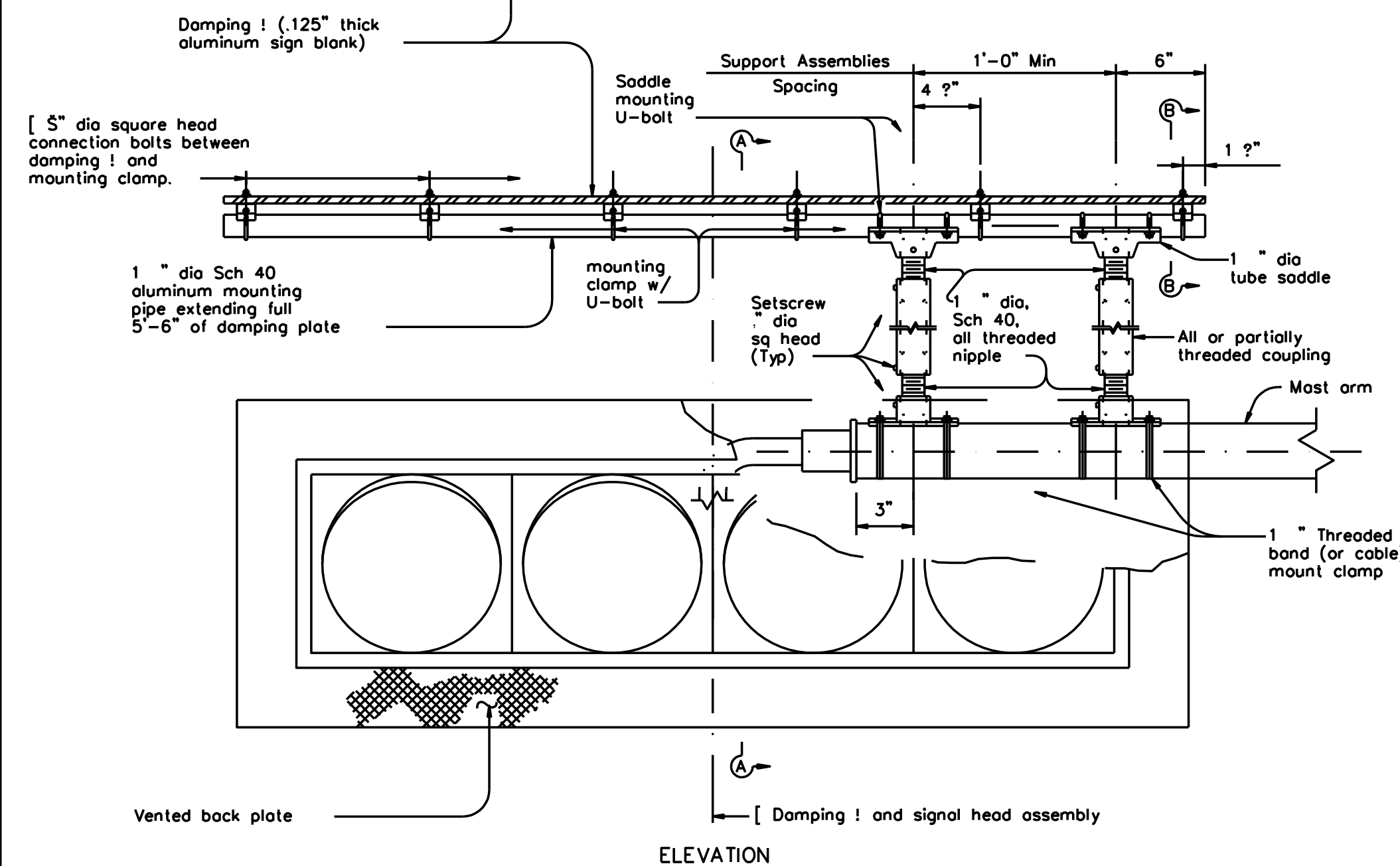
SIGN LENGTH (L)	TUBE LENGTH (T)	A
3'-6"	40"	12"
4'-0"	46"	14"
4'-6"	52"	16"
5'-0"	58"	18"
5'-6"	64"	20"
6'-0"	70"	22"
6'-6"	76"	24"
7'-0"	82"	26"
7'-6"	88"	28"
8'-0"	94"	30"

SIGNS (8'-6" to 10'-0" Long)

SIGN LENGTH (L)	TUBE LENGTH (T)	A	B
8'-6"	100"	19"	20"
9'-0"	106"	20"	22"
9'-6"	112"	21"	24"
10'-0"	118"	22"	26"



PLAN

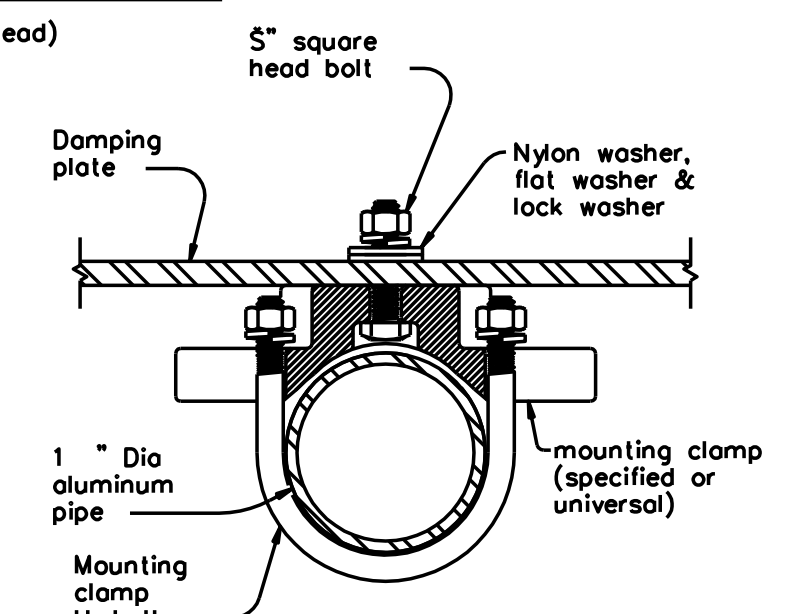


ELEVATION

DAMPING PLATE MOUNTING DETAILS

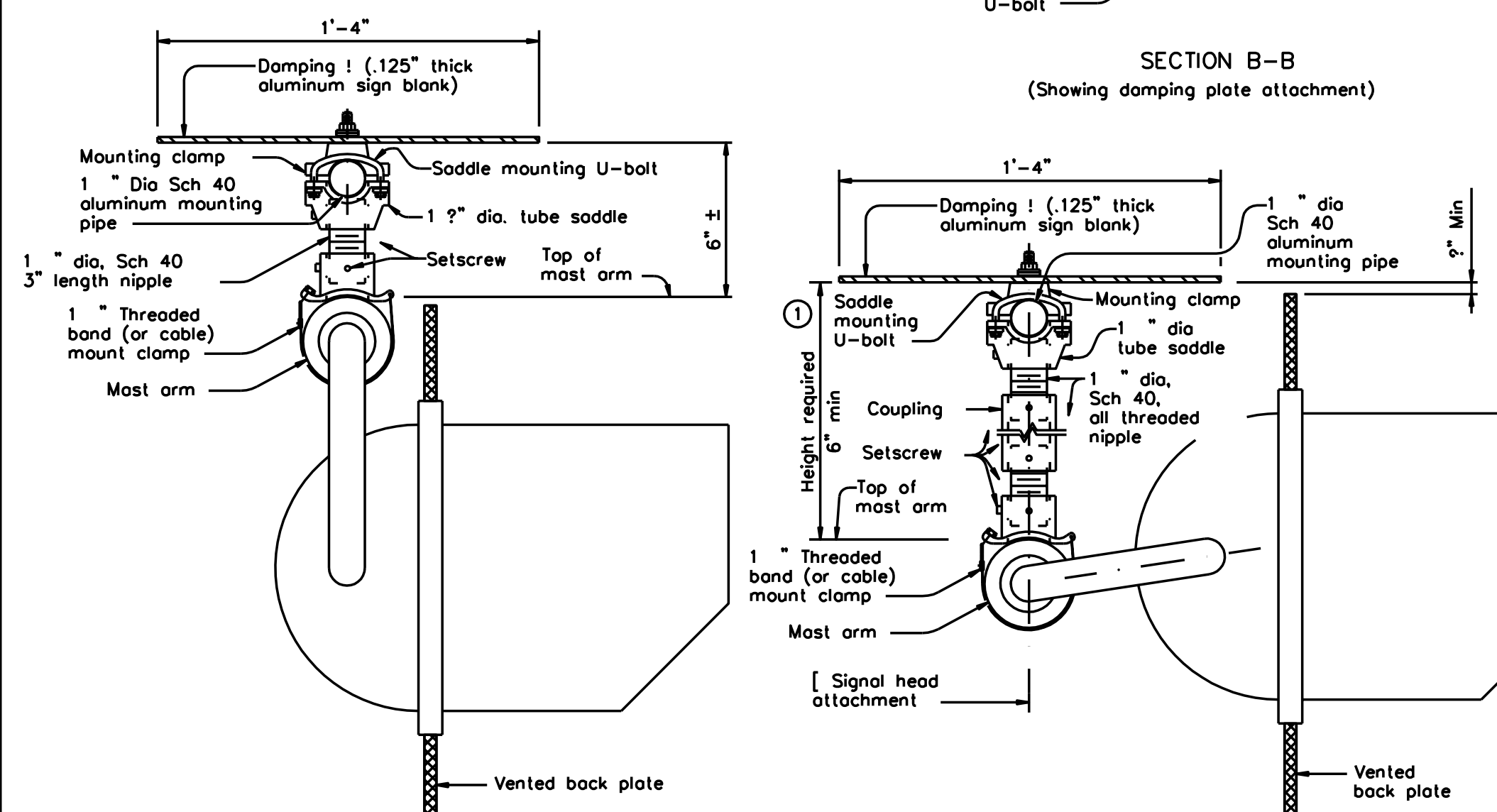
(Showing alternate placement of signal head)

Height required	Recommended supporting assemblies to achieve required height		
	One nipple each length	Two nipples each length plus	One coupling each length
6'-6" ?	3"	-	-
7'-8" ?	4"	-	-
9'-10" ?	6"	-	-
11'-15" ?	-	4"	5"
16'-24"	-	6"	10"



SECTION B-B

(Showing damping plate attachment)



SECTION A-A

(Showing standard placement of signal head)
(Mounting clamp U-bolt is not shown for clarity)

SECTION A-A

(Showing alternate placement of signal head)
(Mounting clamp U-bolt is not shown for clarity)

MAST ARM DAMPING DETAIL

GENERAL NOTES:

In accordance with the findings of TxDOT sponsored research, the installation of a damping plate in accordance with the details shown here at the end of signal mast arms of SMA and DMA standard structures reduces excessive harmonic vertical vibration, and thus fatigue damage. Any deviation from these details may reduce the effectiveness of this damping device.

Aluminum sign blank for damping plate shall conform to Departmental Material Specifications DMS-7110. Materials for mast arm mounting clamp and tube saddle shall be aluminum castings or aluminum alloys as in accordance with manufacturers' stipulations. Mounting pipe, pipe nipple and coupling shall be aluminum alloy 6061-T6 or 6063-T6. Damping plate mounting clamp and U-bolt assemblies shall conform to Standard sheet SMD(GEN)-08. U-bolts for saddle mounting shall have a minimum yield strength of 36 ksi.

Damping plate shall be mounted horizontally. Position centerline of damping plate to align with centerline of signal head assembly. Vertical clearance between signal head (with or without backing plate) and bottom of damping plate shall be maintained as shown. The attachments shown here are examples only, other supporting details which meet both alignment and vertical clearance requirements are also acceptable.

Unless stipulated by the manufacturers, all steel parts shall be galvanized finish in accordance with Standard Specification Item 445, 'Galvanizing'.

Contractor shall verify applicable field dimensions before the installation.

NOTE: THIS DRAWING IS FOR REPRESENTATION PURPOSE ONLY. SHOP DRAWINGS SHALL BE APPROVED BY THE PROJECT ENGINEER AS WELL AS THE CITY ENGINEER.

THIS DETAIL SHEET HAS BEEN PREPARED FOR USE ON STANDARD CITY OF PEARLAND PROJECTS. AN ENGINEER WHO INCORPORATES THE DETAILS ON THIS SHEET BECOMES RESPONSIBLE FOR ITS USE IN THE END PRODUCT IN ACCORDANCE WITH RULE 137.33 (b) AND (c) OF THE TEXAS STATE BOARD OF REGISTRATION FOR PROFESSIONAL ENGINEERS.



City of Pearland, Texas

STANDARD DETAILS

TRAFFIC SIGNAL DETAILS

Job No.:	Scale:	SHEET
Date: April 2017	HORIZ: 1"=NONE	VERT: 1"=NONE
Drawn By: R. Shrestha	CAD FILE:	4
Chkd By: R. Upton		OF 4