

# pearland in motion



Your complete guide to City of Pearland programs, services and recreational activities.

Winter / Spring 2016 - 2017 Issue



## CITY NEWS

What is your Floodplain IQ?

## SPECIAL EVENTS

Winterfest event brings snow to the City of Pearland.

## PARK SYSTEM MAP

View the Park System Map and find out about the amenities offered at local parks.

## AND MORE

Learn about the Scenic City Certification Program.



# pearland in motion

## PEARLAND CITY COUNCILMEMBERS

**Tom Reid**  
MAYOR

**Tony Carbone**  
COUNCILMEMBER POSITION 1

**Derrick Reed**  
COUNCILMEMBER POSITION 2

**Gary Moore**  
COUNCILMEMBER POSITION 3  
MAYOR PRO TEM

**Keith Ordeneaux**  
COUNCILMEMBER POSITION 4

**Greg Hill**  
COUNCILMEMBER POSITION 5

**Trent Perez**  
COUNCILMEMBER POSITION 6

## CITY ADMINISTRATION

**Clay Pearson**  
CITY MANAGER

**Jon Branson**  
DEPUTY CITY MANAGER

**Trent Epperson**  
ASSISTANT CITY MANAGER

## PARKS, RECREATION & BEAUTIFICATION BOARD

**Layni Cade**  
POSITION 1

**Charles B. Stevens, Chair**  
POSITION 2

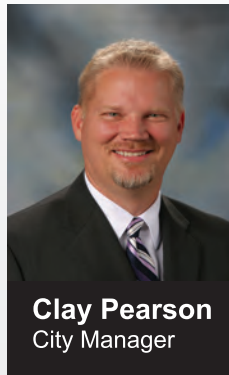
**Bethany Earl**  
POSITION 3

**Cheryl Weaver**  
POSITION 4

**Ted Mittica, Vice Chair**  
POSITION 5

**Mike Wilson**  
POSITION 6

**Sean Ennis**  
POSITION 7



**Clay Pearson**  
City Manager

We all have a lot of pressures, pulls and pushes in our lives. One way to stay up is to have lots of support. Some are fortunate to have families and friends near and far for that help. When we can support each other in our neighborhoods, that's great support for a lot of day-to-day in lending tools, watching the house, or sharing some socializing opportunities. From the City of Pearland, your local government, we want to support you too. We provide support with some of the silent things that you rely, like the water, parks, sewer, roads and sidewalks. We also provide support when you need

help with fire and police responses that bring trained professionals equipped to support you in a time of need.

The City's support has been stretched as the City's needs have grown - Pearland's growth was 30,000 people in 2000 to an estimated 115,000 today. City staff have worked hard and done their best and are relieved to see additional sources of support in the next Fiscal Year:

**Roadwork:** Bailey Road widening to give four lanes and improved drainage for an east-west artery; the State will show progress on what I call the Texas Medical Center - Pearland express with billion-dollar new toll lane and improvements to the existing free lanes AND direct connects to Beltway 8.

**Utilities:** Expansion of the essential sewage treatment plant on the north side of Reflection Bay Drive is underway to increase capacity; design is beginning for a new 10 million gallon/day capacity surface water treatment plant.

**Public Safety:** Our fire department has opened two new stations and we are moving another station to a modern facility at Old Alvin and McHard Road over the next year.

**Parks and Recreation:** We are designing exciting improvements to existing Independence Park at Pearland Parkway and John Lizer Road near Pearland High School and we will finally be opening to play in 2017 the new Sports Complex at Shadow Creek Ranch located at Kingsley and Shadow Creek Parkway.

We can support each other and the City provides opportunities for you to get to know your neighbors at special events, especially, coming up here around the holidays (come to the Hometown Christmas Parade or the Tree Lighting Ceremony that our awesome Parks and Recreation staff are organizing with lots of help). The City of Pearland team is full of great people that I am fortunate to work alongside.

I thank you and them for the mutual support.



# CONTENTS

Park System Map .....	04 - 05
City News .....	06 - 09
Community .....	10 - 13
General Information.....	14
Special Events.....	14 - 16
Aquatics.....	20 - 24
Early Childhood .....	25 - 27
Youth/Teens.....	29 - 34
Adaptive Recreation .....	36 - 37
Adults.....	39 - 43
Senior Adults .....	44 - 45
Directory .....	48



## PEARLAND IN MOTION IS A PUBLICATION OF:

City of Pearland  
 3519 Liberty Dr., Pearland, Texas 77581  
 Phone: **281.652.1600**

email: [cityofpearland@pearlandtx.gov](mailto:cityofpearland@pearlandtx.gov)

website: [pearlandtx.gov](http://pearlandtx.gov)

To advertise in the next issue of Pearland in Motion  
 email: [parkshelpdesk@pearlandtx.gov](mailto:parkshelpdesk@pearlandtx.gov) or call **281.412.8900**

City of Pearland Parks & Recreation is a CAPRA Accredited Agency.



# Park System Map



## City Facility Amenities

□ LIGHTED ■ NON - LIGHTED

	Volleyball Court(s)	Basketball Court(s)	Tennis Court(s)	Softball Field(s)	Soccer Field(s)	Multi - purpose Field(s)	Pond	Hike/Bike/Jogging Trail	Pavilion(s)	Dog Park	Playground	Picnic Table(s)	Splash Pad	Pool	Nature Area	Restrooms	Drinking Fountains	Rental Spaces Available	Classes and Activities	Frisbee Golf	Historical Marker
<b>KAC</b> Melvin Knapp Activity Center 2424 South Park																■	■		■		
<b>RCN</b> Recreation Center & Natatorium 4141 Bailey Rd.	■	■												□		■	■	■	■		
<b>VSC</b> Veterans Sports Complex 3901 Veterans Dr.				□		■										■		■			
<b>WEC</b> Westside Event Center 2150 Countryplace Pkwy.												■				■	■	■	■		
<b>HSS</b> Hickory Slough Sportsplex 7600 Hughes Ranch Rd.					■	□										■					
<b>SCR</b> Shadow Creek Ranch Sportsplex 13050 Shadow Creek Pkwy.	■			■		■	■	■	■		■	■				■	■		■		

# Park Amenities

■ LIGHTED ■ NON - LIGHTED

	Volleyball Court(s)	Basketball Court(s)	Tennis Court(s)	Softball Field(s)	Soccer Field(s)	Multi - purpose Field(s)	Pond	Hike/Bike/Jogging Trail	Pavilion(s)	Dog Park	Playground	Picnic Table(s)	Splash Pad	Pool	Nature Area	Restrooms	Drinking Fountains	Rental Spaces Available	Classes and Activities	Frisbee Golf	Historical Marker
1 (CEN) Centennial Park 3219 McLean Rd.		■	■	■	■	■	■	■	■		■	■	■			■	■	■	■	■	
2 (IND) Independence Park 3919 Liberty Dr.		■	■		■		■	■	■	■	■	■		■		■	■	■	■		
3 Southdown Park 2150 Countryplace Pkwy.	■					■		■	■	■	■	■	■			■	■	■			
4 Woodcreek Park - 2907 Crane											■	■									
5 Woody Street Park - 2111 Woody								■			■	■					■				
6 Cypress Village Park - 6202 Summit								■			■	■									
7 Corrigan Park - 5409 Cunningham											■	■									
8 Hyde Park - 2221 Westminster								■	■		■	■					■				
9 Pine Hollow Park - 1335 Pine Forest		■						■	■		■	■					■				
10 Creekside Park - 2935 E. Orange St.											■	■									
11 Aaron Pasternak Memorial Park 2402 Parkview								■	■		■	■					■				
12 Zychlinski Park - 2243 Grand Blvd.		■						■			■	■					■				■
13 Shadow Creek Ranch Nature Trail 1801 Kingsley								■							■						
14 South Gate Park - 11417 Harris Ave.								■			■	■									
15 Heritage Plaza (Gazebo) - 3519 Liberty Dr.									■												
16 Hunter Park - 3701 E. Orange St.																					■
17 Old Settlers Cemetery - Halik																					■
18 Sonny Tobias Park - 5007 Camden Lane												■									
19 Trails at John Hargrove Environmental Complex 5800 Magnolia St.								■							■		■				

## CITY OF PEARLAND COMMUNICATIONS DEPARTMENT EARNS NATIONAL AWARD



The City-County Communications & Marketing Association (3CMA) presented the City of Pearland with an award in its national competition. The awards were announced during a ceremony at the 3CMA National Conference held in San Antonio, Texas. The Communications Department received the second place Silver Circle Award.

The Savvy Awards, held in conjunction with 3CMA's Annual Conference, recognize outstanding local government achievements in communications, public-sector marketing and citizen-government relationships. The Savvies salute skilled and effective city, county, agency or district professionals who have creatively planned and carried out successful innovations in communications and marketing. 3CMA accommodates local government organizations of all sizes and budget classes by judging entries in several different population groups. More than 700 entries in 38 categories were received. 3CMA utilized volunteer judges from across the United States to review every entry and provide constructive comments on the winning entries.

The City of Pearland received the Silver Circle Award for an episode of its recurring program, Pearland Green in the TV and Video - Education and Training Category.

"We are honored to receive national recognition for the work being done by the Communications Department. Communication with our citizens and marketing city services will continue to be the focus of our department," said Sparkle Anderson, Director of Communications.

Log on to the City's YouTube channel to view the award-winning video.

## CITY ENSURES RESIDENT SAFETY THROUGH BUILDING ABATEMENT PROGRAM

As a part of efforts to clean up Pearland and ensure the safety of residents in several areas around town, the City has moved forward with its Substandard and Vacant Building Abatement Program, which aims to remove or improve dilapidated and unsafe properties.

The Substandard and Vacant Building Abatement Ordinance, adopted in November 2015, has helped the City take action on properties initially identified to be substandard and/or unsafe. As part of the program, some properties have been demolished through voluntary compliance, others are being repaired through the Housing Enforcement & Rehabilitation Opportunities (HERO) program and some are undergoing abatement hearings.

Through this program, which adopts its standards from the International Building and Property Maintenance codes, a structure can be considered for abatement if it meets one or more of the following specifications:

- Any building with roof, ceiling, floors, sills, or foundations, or any combination thereof, rotted or decayed and falling apart, windows out, uninhabitable, and untenable, due to obsolescence and deterioration caused by neglect or vandalism or fire damage, old age or the elements.
- Any building in danger of falling and injuring the person or property of another.
- Any building which is considered to be a potential fire menace.
- Any building which is damp and in unsanitary condition, which is likely to foster disease and sickness.
- Any building that is considered unsafe, unfit for human occupancy, or dangerous.

Log on to [pearlandtx.gov](http://pearlandtx.gov) to view the adopted ordinance or read more on the City's HERO program, which aides homeowners, who have an income at or below 80 percent of the current year's Brazoria County Metropolitan Statistical Area median income level, with grant funds to assist with certain home repairs.

## PEARLAND EARNS PROMINENT SCENIC CITY CERTIFICATION

The City of Pearland is one of 23 Texas municipalities to be awarded the Scenic City Certification. The Scenic City program supports and recognizes cities for commitment to high-quality scenic standards for public roadways and public spaces. This five-year certification (2016 - 2021) was granted by Scenic Texas and its program partners pursuant to a very thorough review of streetscape requirements; parks, trails and public spaces; signage regulations; lighting standards; parking lot landscaping; building façade standards; litter and graffiti controls; dumpster screening; historic districts; and other natural and built environment enhancement programs. The evaluation focuses on enforcement and maintenance efforts in addition to adopted standards.

The Scenic City Certification Program is the first in the United States to incorporate a comprehensive set of model standards for design and development of public roadways and public spaces into one program. Applicant cities present their existing standards for assessment and scoring against the model. Cities with the highest evaluation scores are certified.

“Through the Scenic City Certification Program, cities access a valuable diagnostic tool,” said Anne Culver, executive vice president of Scenic Texas. “A detailed 360° analysis of existing infrastructure standards supplies cities with a roadmap for future growth and development,” she continued.

The Scenic City Certification Program is a project of Scenic Texas and its program partners the Texas Municipal League, Urban Land Institute – Houston, American Planning Association Texas, Houston-Galveston Council, Houston Council of Engineers, Keep Texas Beautiful, Texas Historical Commission, Scenic Houston and Scenic America. These partners see a direct correlation between the success of a city’s economic development efforts and the visual appearance of its public spaces. They developed the Scenic City Certification Program to support and recognize municipalities that implement high-quality scenic standards for public roadways and public spaces. Pearland was recognized at the Texas Municipal League Annual Conference held in Austin, Texas. For more information on the Scenic City Certification Program, visit [scenictexas.org](http://scenictexas.org).



## PEARLAND POLICE DEPARTMENT FIRST TO TRAIN ALL OFFICERS IN DDACTS



The City of Pearland's Police Department program aimed at acting on the information provided to them by Data-Driven Approaches to Crime and Traffic Safety (DDACTS) is moving forward.

The DDACTS model integrates location-based crime and traffic crash data to determine the most effective methods for deploying police units to maintain public safety. As part of the

continued effort, all Pearland Police Officers are now trained in the DDACTS policing model. The Department first announced the strategy earlier this year and the City of Pearland is the first agency of its size in the nation known to have all frontline personnel trained in the DDACTS policing model.

A group of instructors from the International Association of Directors of Law Enforcement Standards and Training provided five one-day sessions to Pearland Police Department employees including all sworn officers, some telecommunications officers and some members of Animal Services – a division of the Pearland Police Department.

The training focused on how each officer, division and city department can work together to positively impact traffic flow and reduce the number of calls for service through targeted enforcement strategies. DDACTS' focus is the collaboration of law enforcement with strategic partners and reinforces the role that partnerships play in reducing social harm and improving quality of life. Building on collaboration, DDACTS is highly visible, strategic traffic enforcement and investigations in exact areas and at exact times that police services are needed most.

While it's too early to evaluate the specific positives in Pearland, there have been several arrests of theft suspects made by officers working in designated zones.

"This is a long-term policing model for the Department as a whole. It's focused on long-term outcomes and will be regularly monitored and evaluated for changes to be made. The DDACTS training provides a framework, but the model utilized will be personalized to Pearland by using our data," said Pearland Police Chief J.C. Doyle.

We are using actual crimes and traffic statistics from our jurisdiction. We are using data to specifically target 'hot spots' where criminal activity and traffic incidents occur most and focusing on highly-visible strategies to reduce those numbers," he continued.

The model uses geo-mapping to identify "hot spots" which are areas of high incidence of crimes and crashes, DDACTS uses targeted traffic enforcement strategies that play two roles in fighting crime and reducing crashes and traffic violations. The first "hot spot" focuses are Part 1 Crimes and Crashes, however, future efforts could be narrowed down to focus on more specific offenses or crashes. Residents can expect to see a higher volume of traffic stops and overall police presence in areas designated as hot spots.

The DDACTS model responds to the competing demands for police services that law enforcement executives face every day. The program's effectiveness will be enhanced using resources the city already has in place such as the GIS mapping database capability as well as interdepartmental cooperation. The effort, which uses existing technology in the City, is a collaboration between the Police Department, Information Technology and Public Works Department.

The responsibility of DDACTS is being handled by the Patrol Special Operations Squad. Utilizing data and crime mapping provided by the department's crime analyst, the Squad is focusing efforts and staffing on areas of the city that have an overlapping crime and traffic problem. The data is then analyzed periodically to see if City resources can be deployed more effectively or if there are other factors (such as signage, barriers, lighting, etc.) that could be implemented to further reduce crime and crashes.

The Squad trained in the DDACTS model heads two units, the Traffic Unit and the Proactive Unit. These two units have special assignments, duty hours and flexibility to tackle identified problem areas. The division is also coordinating with Community Services and outside strategic partners to look for long term, viable solutions to area problems.

Read more on the data-driven approach to traffic safety and crime prevention at [pearlandtx.gov](http://pearlandtx.gov).



# City News

## WHAT'S YOUR FLOODPLAIN IQ?



Do you know if your property is in a floodplain? Do you understand what the implications are when living in a flood prone area? Are you properly insured? The City of Pearland makes every effort to ensure residents who

are in a floodplain are informed. View the flood and property maps online at [pearlandtx.gov/floodplain](http://pearlandtx.gov/floodplain) to determine if a portion of your property is in the floodplain of Clear Creek, Cowart Creek, Hickory Slough, Mary's Creek and Corrigan Ditch or one of the smaller streams.

Flood Insurance Rate Map (FIRM) Zone information for the City of Pearland is listed on the City's website. Additionally, as a public service, the City provides residents with the following information upon request:

- Access to and copies of the current FIRM showing the approximate location of the property
- Benchmark information for land surveyor/engineer to use in floodplain status determination
- A fact sheet on the flood insurance purchase requirement to assist residents who need a mortgage or loan for a property in the Special Flood Hazard Area

## FLOOD INSURANCE RATE

Since the City of Pearland participates in FEMA's Community Rating System, Pearland residents are entitled to a premium discount. For more information on federal insurance and the premium discount, call your insurance company. Flood damage is not covered by your standard property insurance policy or your renter's policy.

Log on to [pearlandtx.gov/floodplain](http://pearlandtx.gov/floodplain) for more information or call the City's Floodplain Administrator or the City Engineer at **281.652.1637** to discuss flood hazards and what you can do to reduce future damage.

## Report an issue with **Connect2Pearland**

The **Connect2Pearland** mobile application for smartphone users is available for Apple iOS and Android devices and provides users the ability to report a variety of issues. The mobile application includes photo sharing and Global Positioning Satellite (GPS) services to attach pictures and coordinates when issues are submitted. Examples of reportable issues include potholes, broken curbs and dead animals.

### Connect2Pearland Featured Services

*The Connect2Pearland mobile application offers users the following categories of service:*

- **Submit a Report** - Offers a listing of a variety of issues that can be reported.
- **My Requests** - Allows users to track the progress of their issues until resolved.
- **Nearby Requests** - View other requests in your area.
- **Settings** - Users can enter profile information to allow them to be updated by email when their reported issues are being addressed.

Visit [pearlandtx.gov/c2p](http://pearlandtx.gov/c2p).





### DUNES DAY

The Brazoria County Parks Department invites residents out for Dunes Day, scheduled for Sat., Jan. 21 from 9 a.m. to 12 p.m. Volunteers meet at Surfside Beach to rebuild, restore and strengthen dunes. For more information, call **979.864.1541**.

Sat., Jan. 21 9 a.m. - 12 p.m.

### TEXAS ADOPT-A-BEACH SPRING CLEAN-UP

It's time for the Texas Adopt-A-Beach Spring Clean-Up.

Come on out on Sat., Apr. 22 to get involved in keeping Brazoria County clean. Volunteers will gather at 9 a.m. at Surfside and Quintana for a general beach clean-up. Dress for the weather and bring along some water. Supplies and a complimentary lunch will be provided.

For more information, contact the coordinators **979.864.1541** (Surfside) or **979.233.1461** (Quintana).

Sat., Apr. 22



### STEPHEN F. AUSTIN FUNERAL REENACTMENT

Take part in a unique event recreating the state funeral of the Father of Texas. The event begins at 9 a.m. at the First Capitol Replica in West Columbia with political speeches and a musket volley, followed by a reception at the Columbia Historical Museum. The event continues at 12 p.m. at the Gulf Prairie Cemetery in Jones Creek with memorial speeches by Sam Houston, Anson Jones, and others, punctuated by a musket volley, Masonic funeral service and a 23-round artillery salute. For information, call the SF Austin-Munson Park at **979.248.5961**.

Sat., Jan. 7, 9 a.m.



### SAN JACINTO DAY CELEBRATION

Join volunteers and students at the Austin Statue at Hwy. 288 and Hwy. 35 for a celebration with historical characters, activities, exhibits, music, and refreshments. This program is geared to school groups. This free event is sponsored by local groups.

For information, call the SF Austin-Munson Park at **979.248.5961**.

Fri., Apr. 21, 9 a.m. - 2 p.m.



### ANNUAL FISHING TOURNAMENT AT SAN LUIS PASS COUNTY PARK

The Seventh Annual Fishing Tournament at San Luis Pass County Park will be held May 18 - 21. The tournament begins at 12 p.m. on Thur. and ends at 9 a.m. on Sun., May 21. All attendees must be registered campers.

For more information or reservations, call **979.233.6026**.

Thur., May 18 - 21



### TEXAS INDEPENDENCE DAY CELEBRATION

Bring the family out to the Austin Statue at Hwy. 288 and Hwy. 35 for a celebration with historical characters, activities, exhibits, music, refreshments and more. This program is geared to school groups. This free event is sponsored by local groups.

For information, call **979.248.5961**.

Thur., Mar. 2

# Community



## TOM REID LIBRARY EVENTS

3522 Liberty Dr.,  
Pearland, Texas 77581

281.652.1677

[bcls.lib.tx.us](http://bcls.lib.tx.us)

All events are free and open to the public.

## MONTHLY PROGRAMS

### Adult Programs

**Bookworms Book Club** is a book discussion group for adults. All meetings are at 6:30 p.m. Please contact the branch for the titles to be discussed.

Meeting dates: Jan. 9, Feb. 6, Mar. 6, Apr. 3 and May 1

**Novel Discussions** is a book discussion group for adults. All books are first novels. All meetings are at 6:30 p.m. Please contact the branch for the titles to be discussed.

Meeting dates: Jan. 23, Feb. 27, Mar. 20, Apr. 17 and May 15

**The Writers' Group** offers writing exercises and critiques for adults. All meetings are at 6:30 p.m.

Meeting dates: Jan. 13, Feb. 11, Mar. 10, Apr. 4 and May 12

### Teen Programs

**Teen Book Club** is a book discussion for teens ages 12 through 18. All meetings are at 12 p.m. Bring lunch to the event and please contact the branch for the titles to be discussed.

Meeting dates: Jan. 9, Feb. 13, Mar. 13, Apr. 10 and May 8

### Children and Family Programs

**Children's Book Club** is a book discussion group for children ages 9 through 12. All meetings are held at 12 p.m. Bring lunch to the event and please contact the branch for the titles to be discussed.

Meeting dates: Jan. 23, Feb. 27, Mar. 27, Apr. 24 and May 22

**Baby Bounce:** Bring your baby and join us in this program where we sing songs, read a story and shake rattles.

This event is for infants age 0 through 18 months and their caregivers. We meet every Mon. at 10:30 a.m. and every Wed. at 3:30 p.m.

**Toddler Storytime:** with stories, songs, and toys. This event is for toddlers ages 18 to 36 months and their caregivers.

We meet every Tues. at 10:15 a.m. and 11:15 a.m.

**Preschool Storytime:** with stories, songs, jumping and counting, and crafts for children ages 3 to 6.

Meetings held every Thur. at 10:30 a.m.

**Family Craft:** for all ages, and is offered the first Wed. of every month at 6:30 p.m. Participants are welcome to bring family and friends and make more than one craft.

# Community



## PEARLAND WESTSIDE LIBRARY EVENTS

2803 Business Center Dr., Suite 101  
Pearland, Texas 77584

713.436.0995

[bcls.lib.tx.us](http://bcls.lib.tx.us)

All events are free and open to the public.

## MONTHLY PROGRAMS

### Adult Programs

**Westside Book Club** is a book discussion group for adults. Meets on the 4th Thur. of each month at 6:30 p.m.

- Jan. 26 – “The Invisible Library,” Genevieve Cogman
- Feb. 23 – “A Window Opens,” Elisabeth Egan
- Mar. 23 – “The After Party,” Anton DiSclafani
- Apr. 28 – “Vinegar Girl,” Anne Tyler
- May 25 – “The Nest,” Cynthia D’Aprix Sweeney

**Writers’ Group** meets on the 2nd Thur. of the month at 6:30 p.m.

**First Friday Computer Class** on the 1st Fri. of each month at 2 p.m.

**Adult Reading Hour:** This is a storytime and craft program intended for adults with special needs. All who attend should be accompanied by a caregiver if special assistance is needed. Ages 18 & up. Group meets on the 3rd Fri. of each month at 10:30 a.m.

**ESL Class:** This class is taught in partnership with the Pearland Adult Reading Center. This group meets on Mon. and Wed. at 5 p.m. Books will be provided. Registration is required. Contact the Adult Reading Center for more information.

### Children’s Programs

**Baby Bounce:** In this program we sing songs, read a story, and shake rattles, with playtime after. Meets Mon. mornings at 10:30 a.m. Meant for ages 0 - 2 years.

**Toddler Time:** A storytime event with crafts for toddlers and young children between ages 2 and 5. Meets Tues. and Thur. at 10:30 a.m.

**Mini Musicians:** A special storytime for small children under age 5 that emphasizes rhythm and music. Meets Sat. at 10:30 a.m.

**Doggy Reading Time:** This program allows reluctant readers to hone their skills by reading to specially trained dogs. Meets monthly on the 1st Sat. at 2 p.m.

**Westside Chess Club:** No prior chess experience required. For children between the ages of 6 and 14. Meets on the 4th Sat. of each month at 2 p.m.

### Teen Programs

**Scrabble Afternoon:** Teens meet to challenge each other at Scrabble. Meets monthly on the 3rd Sat. at 2 p.m.

**YA Bookclub:** Each month, young adults can meet for a group discussion about a themed book selection. Meets monthly on the 2nd Tues. at 6:30 p.m.

**Westside DIY Preteen Craft Night:** Opportunity for preteens to get creative and crafty with a variety of Do-It-Yourself projects. Meets monthly on the 4th Tues. at 6:30 p.m.

# Community

## BRAZORIA COUNTY LIBRARY SYSTEM EVENT

3522 Liberty Dr.  
Pearland, Texas 77581  
281.652.1677  
[bcls.lib.tx.us](http://bcls.lib.tx.us)

All events are free and open to the public.

### *BrazCo Teen Comic Con*

**Date:** Sat., Jan. 28

**Time:** 9 a.m. – 3 p.m.

**Location:** Rodeo Palms Junior High School,  
101 Palm Desert Dr., Manvel, Texas 77578

Come celebrate comic books, graphic novels and popular culture at the BrazCo Teen Comic Con. A collaboration between Pearland ISD, Alvin ISD and the Brazoria County Library System, this day of fun includes a costume contest, authors, illustrators, crafts and more!

# Don't Mess with Texas TRASH-OFF

April 1

## DON'T MESS WITH TEXAS SPRING TRASH-OFF

In conjunction with the Don't Mess with Texas Spring Trash-Off, Keep Pearland Beautiful (KPB) is sponsoring a community-wide litter cleanup on Sat., Apr. 1. The theme for the event is "Pitch in Pearland, Put Litter in its Place!" This year's event will begin at 7:30 a.m., with breakfast at the Stella Roberts Recycling Center. To volunteer for the cleanup or for more information, call the KPB office, 281.489.2795 or visit the organization's website, [mykpb.org](http://mykpb.org).



## KIDS' BACKPORCH PRODUCTIONS

(KBP) is Pearland's premier youth theatre

performing plays and musicals based on classics in children's literature. Preparing its 12th season, KBP will present "THE PRINCE AND THE PAUPER" in March and "A LITTLE PRINCESS" in May. Come be a part of this quality entertainment by taking drama classes, performing on the stage (kids, teens and adults), working behind the scenes, or cheering everyone on from the audience - giving our youth a 'little taste of Broadway' since 2005! Check out: [kidsbackporchproductions.org](http://kidsbackporchproductions.org) or call 281.412.5350, for more information.



## CELEBRATE ARBOR DAY WITH THE KPB TREE SEEDLING GIVEAWAY

This year Keep Pearland Beautiful will celebrate Arbor Day on Jan. 28, from 8 a.m. to 12 p.m. at the Pearland Old Townsite Farmer's Market (Zychlinski Park). At this event, KPB will be giving away 2 tree seedlings to each Pearland resident who attends (until supplies run out). For more information about trees and Keep Pearland Beautiful visit [mykpb.org](http://mykpb.org) or call 281.489.2795.

# General Information

## REGISTER TODAY

Registration begins on Dec. 5 for members and Dec. 12 for the public. The Parks & Recreation Department has made it easy for you to get registered for the class of your choice. A participant may not register more than seven days after a class has started. Classes will not be prorated for an individual registering after a class has begun.

### THERE ARE TWO WAYS TO REGISTER:

#### ONLINE

You must have a Parks & Recreation Department account in the database in order to register online at [pearlandparks.com](http://pearlandparks.com). Online service is available 24 hours a day and is the preferred method of registration for the majority of program participants.

#### WALK-IN

Walk - in registrations are accepted at the Pearland Parks & Recreation Office (4141 Bailey Rd.) from 7:30 a.m. - 5:30 p.m., Mon. through Fri. Registration is also available at the Westside Event Center (2150 Countryplace Pkwy.) while the facility is open for programs and classes. For facility hours of operation, call **281.412.8900**.

## RESIDENT FEE

In order to register and receive the resident fee rate, participants must show proof of residency within the corporate city limits of Pearland. Accepted forms include one valid photo ID (Texas Driver's License/ID Card, Passport) or other proofs of address such as vehicle registration, utility/phone/cable bill or credit card statement.

## AMERICANS WITH DISABILITIES ACT

We are committed to supporting and complying with the Americans with Disabilities Act. If you require special accommodations, please notify the department in advance of the activity so that we can make special arrangements.

## POLICIES

View our 100 percent Satisfaction Guarantee, Refund, Withdrawal and other policies on our main webpage of [pearlandparks.com](http://pearlandparks.com) under the 'About Us' tab.

## PHOTO POLICY

Frequently, the Parks & Recreation Department videotapes or photographs participants enjoying programs, special events or parks and facilities. These photographs and videotapes are for the City of Pearland publications, print collateral or use on Pearland TV. These materials are used at the department's discretion and become its sole property.

# WINTERFEST

**Cost:** Ages 16 and up \$5 / Ages 3 - 15 \$10 / Ages 2 and under FREE

**Date:** Sat., Jan. 28

**Time:** 10 a.m. - 5 p.m.

**Location:** RCN

Come for a fun-filled day of playing in the snow, rides, great food, games and live entertainment on the UHCL Pearland Entertainment stage. Winterfest features snow tubing hills in the H-E-B Winter Zone, carnival, inflatables, games, petting zoo provided by Westside Veterinary Hospital, rock climbing and more. Tickets will be on sale at the Recreation Center & Natatorium beginning Dec. 1 through Jan. 27. Bring a canned good, benefiting the Pearland Neighborhood Center, to receive a \$2 discount on pre-sale tickets (maximum one discount per ticket). **There will not be any discounts the day of the event.**

For more information, call **281.412.8907** or visit [pearlandparks.com](http://pearlandparks.com).

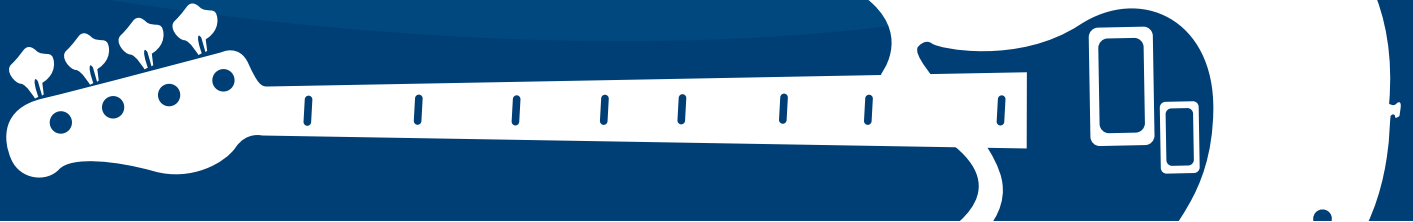


# Special Events

## SUPER CONCERT

Join us as Pearland gets in the “big game” spirit with a Super Concert on Sat., Feb. 4 at 7 p.m. at the Pearland Town Center located at 11200 W. Broadway St. in Pearland. Just before the big game, sit back and relax to the tunes of a fantastic live band. Don't miss out on this super experience.

For more information, log on to [visitpearland.com](http://visitpearland.com).



## Dawson Winter Dash &



## Family Fun Run

**Cost:** 1 mile fun run \$20, 5K \$30

*These are early bird prices.*

**Age:** All ages

**Date:** Sat., Jan. 28

**Time:** 1 mile fun run: 8:30 a.m., 5K: 9 a.m.

**Location:** VSC

Join the fun and excitement by running or cheering on your favorite racers and stay for some winter festivities, Texas-style, in an effort to support the Dawson High School Eagle Band and Catalyst Color Guard. Entry to Winterfest is included in race registration - up to a \$10 value!

Register online at [thedriven.net](http://thedriven.net) or visit [pearlandparks.com](http://pearlandparks.com) for event information.

## DADDY *daughter* Dance



**Cost:** \$30 per couple, \$10 for additional sibling

**Age:** 3+ years

**Date:** Sat., Feb. 25

**Time:** 6 - 8 p.m.

**Location:** RCN

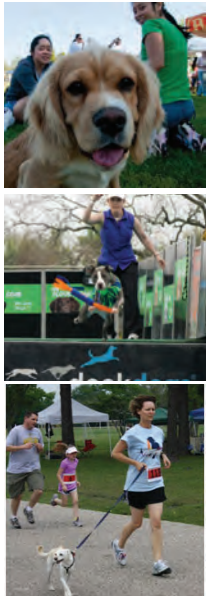
Don't miss this opportunity to make memories that will last a lifetime. This year's theme is “One Night in Paris.” Bring your princess out for a night of dessert, dancing and fun. Advance registration is required online at [pearlandparks.com](http://pearlandparks.com) by Feb. 15. *Space is limited.*

For more information, call **281.412.8930** or email [ltaylor@pearlandtx.gov](mailto:ltaylor@pearlandtx.gov).

6542, Sat., Feb. 25, 6 - 8 p.m. (couples)

6543, Sat., Feb. 25, 6 - 8 p.m. (additional siblings)

# Special Events



**Cost:** Free  
**Age:** All ages  
**Date:** Sat., Mar. 25  
**Time:** 10 a.m. - 4 p.m.  
**Location:** VSC

Bring your pups out to our 23rd Annual Paws in the Park event presented by Westside Veterinary Hospital! This year, we'll kick things off with the H-E-B Pet and Owner Fun Run at 8 a.m., followed by a National Dock Diving competition and the US Dog Disc Nationals. Additional activities include doggie entertainers, pet adoptions, Police K9 demonstrations and more. Man's best friend is sure to enjoy this paw-some race and event.

Registration is available online at [active.com](http://active.com) or log on to [pearlandparks.com](http://pearlandparks.com) for event information.

## VOLUNTEER



Enjoy learning unique skills, meeting great people and getting connected with the city by volunteering with the Parks & Recreation Department. We have a place for you! We welcome your time and talents in providing service for Special Events, Athletics, Adaptive Recreation divisions and more at [pearlandtx.gov/parkvolunteer](http://pearlandtx.gov/parkvolunteer). Want to complete a group community service project? Visit [pearlandtx.gov/serviceproject](http://pearlandtx.gov/serviceproject).

## TELL US WHAT YOU THINK...

about Pearland in Motion by logging on to [pearlandtx.gov/yourvoice](http://pearlandtx.gov/yourvoice).



## Earth Day Celebration

**Cost:** Free  
**Date:** Sat., Apr. 22  
**Time:** 10 a.m. - 2 p.m.  
**Location:** Southdown Park, 2150 Countryplace Parkway, Pearland, Texas

Bring the whole family to learn how to become a responsible inhabitant of planet Earth. This free event will provide educational activities, entertainment and games, all to support protecting the Earth for future generations.





# LET US MAKE IT HAPPEN.



The Recreation Center & Natatorium is the perfect place for birthday fun!

Call 713.307.2380

or email [lpieventplanning@gmail.com](mailto:lpieventplanning@gmail.com)

for availability and information on party packages.



Let's Plan It!

*Start To Finish Event Planning*



## RESERVE A SPACE FOR YOUR EVENT



The City of Pearland offers several rental spaces to accommodate a variety of needs. We have space from the indoor natatorium, to outdoor parks and banquet halls, to meeting rooms.



Visit [pearlandparks.com](http://pearlandparks.com) to find the right space for your next meeting or event.



**Pearland in Motion** is produced by the City of Pearland and available at 25 facilities across the City. We reach a broad demographic with coverage on City of Pearland programs, services and recreational activities. Advertising with the City of Pearland is as easy as 1 - 2 - 3.

To advertise in the next issue of Pearland in Motion, email [parkshelpdesk@pearlandtx.gov](mailto:parkshelpdesk@pearlandtx.gov) to place an ad. View a rate sheet at [pearlandtx.gov/pearlandinmotion](http://pearlandtx.gov/pearlandinmotion).



## VISIT THE PEARLAND FARMERS MARKET

2nd & 4th Saturdays of each month

8 a.m.-12 p.m.

Zychlinski Park  
2243 Grand Blvd.

The Farmers Market is a collaborative effort between Bay Area Homesteading, Pearland Old Townsite Coalition, the Pearland Economic Development Corporation and City of Pearland Parks & Recreation. The partnership aims to ensure the city has a successful and sustainable market.

For more information on how to become a vendor, visit [pearlandoldtownsitefarmersmarket.com](http://pearlandoldtownsitefarmersmarket.com).

## NATATORIUM POOL PARTIES



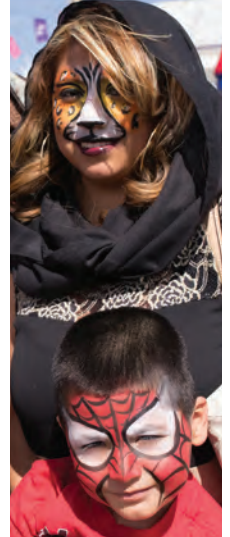
Natatorium Pool Parties provide a two hour pool reservation in the Natatorium, including a designated area for your guests to gather and celebrate. This package does not include decorations, supplies, or a host.

Call **281.412.8900** for more information.

## BECOME A SPONSOR

The Parks & Recreation Department offers a unique opportunity for civic-minded local businesses such as yours to give back to the community and reach portions of the citizenry you may not usually have access to. The Department provides opportunities to expose your brand to the Pearland community at more than 131 events and programs throughout the year that boast more than 300,000 annual attendees. You don't want to miss out! Sponsor a specific program or event or become part of all of them.

Email [sponsorships@pearlandtx.gov](mailto:sponsorships@pearlandtx.gov) or call **281.412.8900** for details.



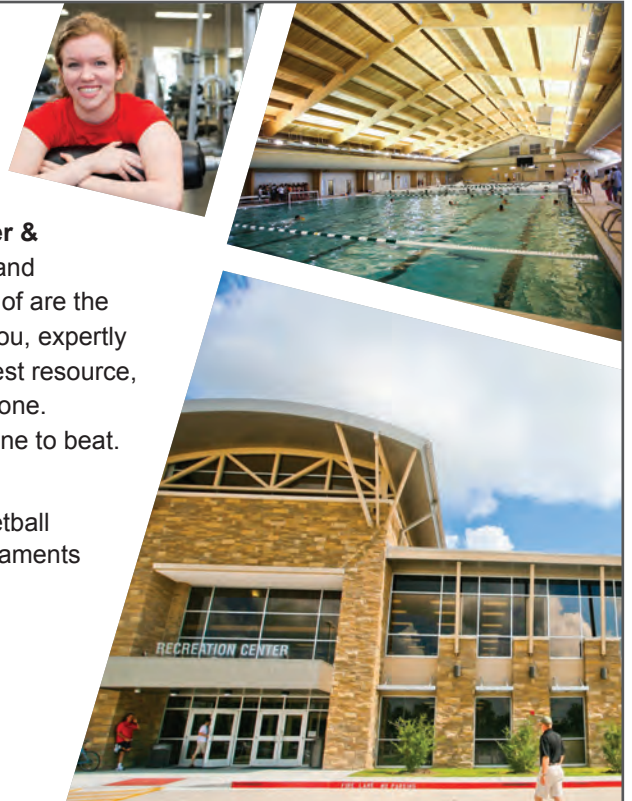
## MEMBERSHIP HAS ITS BENEFITS.

**When you become a member of the Pearland Recreation Center & Natatorium, you can expect the best.** The state of the art facility and equipment is familiar and comfortable, but what we are most proud of are the people who are there to serve you. The people who warmly greet you, expertly train you and enthusiastically teach you. It is the entire team, our best resource, who is dedicated to making your fitness experience an exceptional one. The Pearland Recreation Center & Natatorium is hands-down the one to beat.

### BENEFITS INCLUDES:

- State of the art equipment & cardio area
- Group fitness classes throughout the day at no charge, speciality classes such as yoga, cycling, kickbox cardio, aqua aerobics and much more.
- Indoor lap pool
- Racquetball and Basketball courts perfect for tournaments and leagues
- Full locker facilities
- Personal Trainers
- Open 7 days a week

[pearlandtx.gov/membership](http://pearlandtx.gov/membership)



## Have you ever wondered, “WHY DO OFFICERS DO THAT?”

Would you like to gain working knowledge of the duties of a police officer? Consider registering for a Citizen's Police Academy class! Students will receive instruction on Thursday nights from 7 to 9:30 p.m. on the different aspects of policing. Course topics include the police hiring process, Penal Code and Transportation Code, Arrest Procedures and Crash Investigation. There is no cost to attend. Graduates will have the option of joining the Pearland Citizen Police Academy Alumni Association. The PCPAAA is a service organization dedicated to supporting the mission of the Pearland Police Department.

Submit an application at [pearlandtx.gov/cpa](http://pearlandtx.gov/cpa).



## Pearland – A Perfect Pick for visitors, family and friends!

The holiday season is just around the corner and hosting guests for any occasion from out of town can be made easy. Pearland is home to eleven hotels with many offering breakfast as part of the booking. Your guests will find a hotel stay in Pearland to provide more privacy and a better night's sleep.

Currently, several Pearland hotels are offering special rates with a "Fall into Pearland" promotion, go to [VisitPearland.com](http://VisitPearland.com) for details.

**Looking for things to do,** go to our events calendar or play section on [Visitpearland.com](http://Visitpearland.com) for happening and attractions. Guests can visit a winery, a brewery, enjoy barbeque and burgers, see a Hindu temple, step back into Austria/Germany, listen to live music or taste tequila and rum. Pearland is home to award-winning culinary finds including Rodeo Houston's Best Bites winner!

**Stop by the Visitor Center** at the Pearland Convention & Visitors Bureau, 11200 Broadway St, Suite 1390 located in the Pearland Town Center, Monday through Friday from 8 a.m. to 5 p.m. to pick up brochures and maps. Or, sign up for our e-newsletter at [VisitPearland.com](http://VisitPearland.com) and follow us on Facebook for the latest updates.



As a department of the City, the Pearland Convention & Visitors Bureau is funded through the Hotel/Motel Occupancy Tax with the primary mission to generate tourism related activity to Pearland.

281.997.5970 • [VisitPearland.com](http://VisitPearland.com)  
[pearlandcvb@pearlandtx.gov](mailto:pearlandcvb@pearlandtx.gov)



# Aquatics



## PRESCHOOL AQUATICS

**Cost:** \$50 resident / \$62.50 non - resident

**Age:** 4 - 5 years

**Location:** RCN

Classes consist of student/instructor participation only and parents do not enter the water with their children in this program. Classes consist of eight 25-minute lessons. Orientates preschool age children to the aquatic environment and helps them acquire basic aquatic skills such as entering/exiting the water, breath control, submerging head, opening eyes and recovering submerged objects, front/back glides and stationary floating, rolling over from front to back and back to front, treading water and learning to stay safe in, on and around water.

## LEARN TO SWIM

**Cost:** \$75 resident / \$93.75 non - resident  
(Levels 1 - 3 & Adults)

\$85 resident / \$106.25 non - resident  
(Levels 4 - 6)

**Age:** 6 -15 years

**Location:** RCN

### Level 1 Introduction to Water Skills

For first time and non-adjusted swimmers. Develops positive attitude towards swimming and emphasizes the importance of good habits and safe practices in and around the water.

### Level 2 Fundamental Aquatic Skills

Students learn to float without support and recover to a vertical position. This level marks the beginning of true locomotion skills and adds to the self-help and basic rescue skills that began in Level 1. *(Prerequisite: Completion of American Red Cross Swimming Level 1)*

### Level 3 Stroke Development

Builds on the skills in Level 2 by providing additional guided practice. This course teaches students how to coordinate the front and back crawl, the elementary backstroke and fundamentals of treading water. Students will also learn safe diving rules and begin to dive from the side of the pool into deep water. *(Prerequisite: Completion of American Red Cross Swimming Level 2)*

### Level 4 Stroke Improvement

Develops participants' confidence in the strokes learned in Level 3 and improves other aquatic skills. Students should be able to demonstrate the following: headfirst entries from the side in the compact and stride position, swim underwater, feet-first surface dives, survival swimming, front crawl and backstroke open turns, to tread water using two different kicks. The class focuses on improvement in the 5 basic swim strokes. *(Prerequisite: Completion of American Red Cross Swimming Level 3)*

### Level 5 Stroke Refinement

Students should be able to demonstrate the following: shallow angle dives from the side, glide and then begin a stroke on the front, tuck and pike surface dives (submerging completely), front flip and backstroke flip turns, proper sculling techniques, and to coordinate and refine the front and back crawl, elementary backstroke, breaststroke, sidestroke and butterfly. *(Prerequisite: Completion of American Red Cross Swimming Level 4)*

### Level 6 Fitness Swimming

Teaches students how to prevent aquatic emergencies in various aquatic environments as well as introduces and practices self-rescue. Discuss and demonstrate how to use various equipment while swimming, describe the principles of setting up a fitness program and apply the principles of water exercise. *(Prerequisite: Completion of American Red Cross Level 5)*

# Aquatics

## FREE STROKE & WATER SAFETY CLINICS

**Cost:** Free

**Age:** All ages

**Location:** RCN

Clinics are designed for everybody! From those who are non-swimmers, to the advanced swimmer who hasn't had anybody look at their stroke recently. Free to anyone, including non-members. Instructors may also be able to work with you on other swimming elements/strokes while you are there/per request.

- Learn a designated stroke/skill
- Learn tips & drills on how to improve your already amazing strokes/skills
- Learn drills or techniques to help you swim faster, longer and smarter
- Get free advice on how to create your own effective swimming workouts.

There is no need to sign up or register.

Participants may come any time during the event.

**Freestyle:** Sat., Jan. 21, 9 - 11 a.m.

**Backstroke:** Sat., Feb. 18, 9 - 11 a.m.

**Breaststroke:** Sat., Mar. 25, 9 - 11 a.m.

**Butterfly:** Sat., Apr. 29, 9 - 11 a.m.

## WATER BABIES

**Cost:** \$50 resident / \$62.50 non - resident

**Age:** 9 months - 4 years

**Location:** RCN

The Water Babies program allows parents to participate with their child for an individual introduction to water exploration and water safety. A parent or trusted adult per child is required in each class. Classes consist of eight 25-minute lessons. The course familiarizes young children with the water and prepares them for American Red Cross Preschool Aquatics or Learn to Swim courses. Course is not intended to teach children to become good swimmers or to survive in the water on their own.

## BAY AREA STARS DIVING TEAM

Introduces fundamental diving skills to its participants. This includes forward and backward take off, in entries and dive positions. An effort is made to inform all divers about participation in various Amateur Athletic Union meets. We strive to have fun, get in shape and be safe.

*Prerequisite: All participants must become a member of AAU, display an excellent attitude and be able to swim down to the bottom of a 12.5 - foot pool and swim to the side of pool. All participants must pay a one-time AAU annual membership of \$14, which is paid to the instructor.*

For registration information, email [svenschultz@comcast.net](mailto:svenschultz@comcast.net) or visit [bayareastardive.com](http://bayareastardive.com).

## INFANTS & WATER

Aquatic survival programs for infants are available at the Recreation Center & Natatorium by two independent contractors. This is not a learn-to-swim program, but the class focuses on survival skills. The objective of these programs is to provide infants with skills to remain safe in aquatic environments. The minimum age for this class is 6 months. If you are interested in registering with Infant Aquatics email [ashleygoalsby@gmail.com](mailto:ashleygoalsby@gmail.com). For those interested in registering with Infant Swimming Resource with its Self-Rescue™ program contact [m.kerlegan@infantswim.com](mailto:m.kerlegan@infantswim.com).



# Aquatics

## LIFEGUARDING

**Cost:** \$168 resident / \$210 non - resident

**Age:** 15 +

**Location:** RCN

The purpose of the American Red Cross

Lifeguarding course is to provide entry-level lifeguard participants with the knowledge and skills to prevent, recognize and respond to aquatic emergencies and to provide care for breathing and cardiac emergencies, injuries and sudden illnesses until emergency medical services personnel take over.

### Prerequisites:

1. Must be 15 years old on or before the final scheduled session of this course.
2. Swim 300 yards continuously demonstrating breath control and rhythmic breathing. Candidates may swim using the front crawl (freestyle), breaststroke or a combination of both, but swimming on the back or side is not allowed. Swim goggles may be used.
3. Tread water for 2 minutes using only the legs. Candidates should place their hands under the armpits.
4. Complete a timed event within 1 minute, 40 seconds:
  - Starting in the water, swim 20 yards. The face may be in or out of the water. Swim goggles are not allowed.
  - Surface dive, feet first or head first, to a depth of 7 to 10 feet to retrieve a 10-pound object.
  - Return to the surface and swim 20 yards on the back to return to the starting point with both hands holding the object and keeping the face at or near the surface so you are able to get a breath. Candidates should not swim the distance under water. Exit the water without using a ladder or steps.

### Certification Requirements:

- Attend and participate in all class sessions.
- Demonstrate competency in all required skills and activities.
- Demonstrate competency in all required final rescue skill scenarios.
- Pass both the Section 1-CPR/AED for the Professional Rescuer and First Aid and Section 2-Lifeguarding Skills final written exams with a minimum grade of 80 percent.

### Certificate Issued and Validity Period:

Certificates will be emailed within 4-weeks of course completion and will be valid for two years.

6637, Mar. 13 - 17, 10 a.m. - 5 p.m.



## SWIM LEVEL TEST

**Cost:** \$10

**Age:** 4 years and up

**Location:** RCN

Don't know what swim lesson level to enroll your child in? Need a specific swim card to go to camp? Each participant will be evaluated based on the American Red Cross Learn to Swim exit skills assessments for the level being tested. The highest-level certificate will be awarded upon successful completion. After this test, participants will be grouped and tested for specific swim skills required by various camps.

Jan. 21, Feb. 11, Mar. 18 and Apr. 15

# Aquatics

## NATATORIUM SESSION 1

MON. / WED. (Jan. 2 - 30)

Class	5 p.m.	5:30 p.m.	6 p.m.	6:30 p.m.	7 p.m.	7:30 p.m.	8 p.m.	8:30 p.m.
Water Babies		6556						
Preschool	6558							
Level 1			6559					
Level 2					6561			
Level 3			6563					
Level 4					6564			
Level 6							6567	
Private	6544	6545					6546	6547

TUES. / THUR. (Jan. 3 - Jan. 31)

Class	5 p.m.	5:30 p.m.	6 p.m.	6:30 p.m.	7 p.m.	7:30 p.m.	8 p.m.	8:30 p.m.
Water Babies	6557							
Level 1			6560					
Level 2					6562			
Level 4					6565			
Level 5							6566	
Private	6548	6549	6550	6555	6551	6554	6552	6553

## NATATORIUM SESSION 2

MON. / WED. (Feb. 13 - Mar. 8)

Class	5 p.m.	5:30 p.m.	6 p.m.	6:30 p.m.	7 p.m.	7:30 p.m.	8 p.m.	8:30 p.m.
Water Babies		6568						
Level 1			6581					
Level 2					6583			
Level 3			6584					
Level 4					6587			
Level 6							6588	
Adult							6589	
Private	6570	6571						

TUES. / THUR. (Feb. 14 - Mar. 9)

Class	5 p.m.	5:30 p.m.	6 p.m.	6:30 p.m.	7 p.m.	7:30 p.m.	8 p.m.	8:30 p.m.
Water Babies		6569						
Preschool	6580							
Level 1			6582					
Level 2							6586	
Level 3					6585			
Private	6572	6573	6574	6575	6576	6577	6578	6579



# Aquatics

## NATATORIUM SESSION 3

### MON. / WED. (Mar. 20 - Apr. 12)

Class	5 p.m.	5:30 p.m.	6 p.m.	6:30 p.m.	7 p.m.	7:30 p.m.	8 p.m.	8:30 p.m.
Water Babies		6602						
Preschool	6600							
Level 1			6604					
Level 2			6606					
Level 3					6608			
Level 4					6609			
Level 5							6610	
Level 6							6611	
Private	6590	6592						

### TUES. / THUR. (Mar. 21 - Apr. 13)

Class	5 p.m.	5:30 p.m.	6 p.m.	6:30 p.m.	7 p.m.	7:30 p.m.	8 p.m.	8:30 p.m.
Water Babies	6603							
Preschool		6601						
Level 1			6605					
Level 2					6607			
Adult							6612	
Private	6591	6593	6594	6595	6596	6597	6598	6599

## NATATORIUM SESSION 4

### MON. / WED. (Apr. 24 - May 17)

Class	5 p.m.	5:30 p.m.	6 p.m.	6:30 p.m.	7 p.m.	7:30 p.m.	8 p.m.	8:30 p.m.
Water Babies	6614							
Preschool		6616						
Level 1			6617					
Level 2					6619			
Level 3			6620					
Level 4					6622			
Level 5							6623	
Private	6625	6629					6635	6636

### TUES. / THUR. (Apr. 25 - May 17)

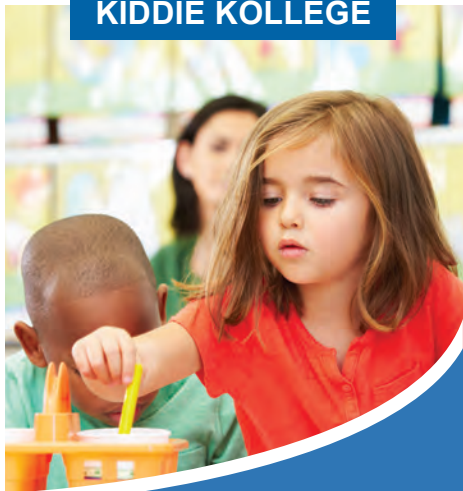
Class	5 p.m.	5:30 p.m.	6 p.m.	6:30 p.m.	7 p.m.	7:30 p.m.	8 p.m.	8:30 p.m.
Water Babies		6613						
Preschool	6615							
Level 1			6618					
Level 3					6621			
Level 6							6624	
Private	6626	6628	6630	6631	6632	6633	6634	





# Early Childhood

## KIDDIE KOLLEGE



**Cost:** \$390 resident /  
\$432 non - resident

**Age:** 4 - 5 years

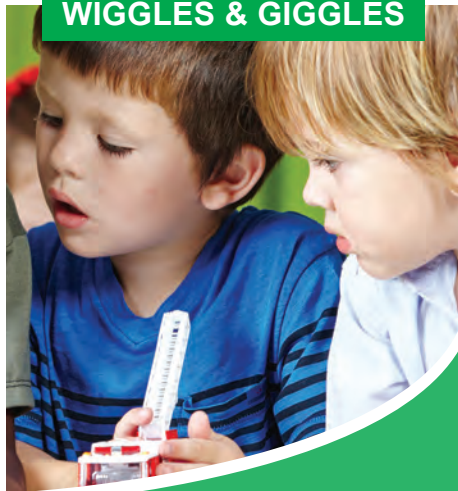
**Location:** WEC

Explore the effects of a secure, structured, stimulating, and developmentally-appropriate environment for social, physical, and intellectual growth of your child. Students will be introduced to activities to help sharpen listening skills, social skills, hand/eye coordination, healthy eating habits and more. Get a head start and begin preparing your child for Kindergarten by enrolling in one of our sessions. Please bring a snack and drink to class each day. Children must be toilet-trained, able to communicate to the instructor; and be self-sufficient in this task. Pull-ups are NOT considered toilet-trained.

*A minimum of 6 participants must register 7 days prior to class start date. No class the week of Spring Break.*

6438, Tues. / Thur., Jan. 10 - May 11,  
11:30 a.m. - 2:30 p.m.

## WIGGLES & GIGGLES



**Cost:** \$30 resident /  
\$37.50 non - resident

**Age:** 1 - 4 years

**Location:** WEC

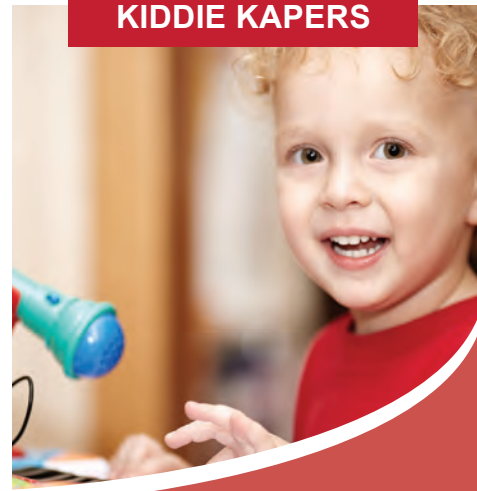
Come share 'Fun Time' with your child. Your child will be introduced to an educational activity in 'Warm-Up.' Then, the interactive free playtime will begin where new playmates will be made. Your child will have the opportunity to develop motor and memory skills in the 'Learning Stations.' Throughout the class time, your little ones will build confidence in their movements and self-expressions. **PARENT PARTICIPATION REQUIRED.**

*A minimum of 6 participants must register 7 days prior to class start date.*

6655, Wed., Jan. 11 - Feb. 15,  
10 - 10:45 a.m.

6656, Wed., Mar. 22 - Apr. 26,  
10 - 10:45 a.m.

## KIDDIE KAPERS



**Cost:** \$320 resident /  
\$384 non - resident

**Age:** 3 - 4 years

**Location:** WEC

Our goal is to provide a secure, structured, stimulating, and developmentally-appropriate environment for the social, physical, and intellectual growth of your child. Your child will be introduced to activities to help sharpen listening skills, social skills, hand-eye coordination and healthy habits. They will also work daily on letter, shape, number and color recognition. Please bring a snack and drink each class day. Children must be toilet-trained; pull-ups are NOT considered toilet-trained.

*A minimum of 6 participants must register 7 days prior to class start date.*

*No class the week of Spring Break.*

6437, Tues. / Thur., Jan. 10 - May 11,  
8:30 - 11 a.m.

# Early Childhood

## TUMBLE WEEDS WITH PEARLAND GYMNASTICS ACADEMY

**Cost:** \$81.60 resident / \$102 non - resident

**Age:** 3 - 4 years

**Instructor:** Pearland Gymnastics Academy Coaches

**Location:** Pearland Gymnastics Academy

This course is a fun, introductory gymnastics program designed to develop strength, balance and coordination. Children independently follow the coach to inspire sequencing activities, with a combination of learning and playing. The class is strategically designed to provide an outlet for productive play and group interaction.

6500, Tues., Jan. 17 - Mar. 7, 10 - 10:45 a.m.

6501, Thur., Jan. 19 - Mar. 9, 10 - 10:45 a.m.

6502, Thur., Jan. 19 - Mar. 9, 11 - 11:45 a.m.

6503, Thur., Jan. 19 - Mar. 9, 6 - 6:45 p.m.

6504, Tues., Mar. 21 - May 9, 10 - 10:45 a.m.

6505, Thur., Mar. 23 - May 11, 10 - 10:45 a.m.

6506, Thur., Mar. 23 - May 11, 11 - 11:45 a.m.

6507, Thur., Mar. 23 - May 11, 6 - 6:45 p.m.

## TUMBLE TOTS WITH PEARLAND GYMNASTICS ACADEMY

**Cost:** \$81.60 resident / \$102 non - resident

**Age:** 4 - 5 years

**Instructor:** Pearland Gymnastics Academy Coaches

**Location:** Pearland Gymnastics Academy

Children love a challenge and we help them achieve their goals with newly learned skills. This course is an exciting, introductory gymnastics program designed to develop strength, balance and coordination. The course introduces gross motor skills with multi-step instructions.

6512, Tues., Jan. 17 - Mar. 7, 11 - 11:45 a.m.

6513, Tues., Jan. 17 - Mar. 7, 6 - 6:45 p.m.

6514, Thur., Jan. 19 - Mar. 9, 10 - 10:45 a.m.

6515, Tues., Mar. 21 - May 9, 11 - 11:45 a.m.

6516, Tues., Mar. 21 - May 9, 6 - 6:45 p.m.

6517, Thur., Mar. 23 - May 11, 10 - 10:45 a.m.

## TEAMS OF TOMORROW BASKETBALL

**Cost:** \$107 resident / \$133.75 non - resident

**Age:** 3 - 5 years

**Location:** WEC

Bring your child to participate in the most unique song & movement program available to preschool



and Kindergarten students today. Teams of Tomorrow (TOT) is a basketball ball handling, motor development, and fitness program for students ages 3 - 5. TOT combines academics and athletics-appealing to boys and girls, athletic and non-athletic. What makes TOT so unique is the development of self-esteem and self-confidence that a child attains through the classes. Sign up for both sessions in order to receive the full TOT experience. Minimum of 6 participants must register 7 days prior to class start date.

6439, Thur., Jan. 12 - Mar. 2, 11 - 11:45 a.m.

6440, Thur., Mar. 23 - May 11, 11 - 11:45 a.m.

## BRICKS 4 KIDZ - PRESCHOOL



**Cost:** \$80 resident / \$100 non - resident

**Age:** 3 - 5 years

**Location:** WEC

These classes are designed for preschool-aged children to learn about letters, numbers, shapes and colors. Students will

create exciting models using DUPLO Bricks, allowing

them to build on a scale designed for their little hands. Each session will focus on a particular topic and feature lessons on letter recognition, size comparison, shape and color identification, counting, placement vocabulary and patterns.

6434, Tues., Jan. 10 - Feb. 28, 11 - 11:45 a.m.  
("Fun at the Farm")

6443, Tues., Mar. 21 - May 9, 11 - 11:45 a.m.  
("All about Me")

# Early Childhood

## TUMBLE BUDS WITH PEARLAND GYMNASTICS ACADEMY

**Cost:** \$77.80 resident / \$96 non - resident

**Age:** 18 months - 3 years

**Instructor:** Pearland Gymnastics Academy Coaches

**Location:** Pearland Gymnastics Academy

Pearland Gymnastics Academy Tumble Buds is an introductory program designed for the parent and child to actively bond and participate together in a structured class. The class will introduce basic gymnastics while focusing on the development of balance, coordination, and fine and gross motor skills. It is strategically designed to provide an outlet for productive play and group interaction.

6498, Tues., Jan. 17 - Mar. 7, 10 - 10:30 a.m.

6499, Tues., Mar. 21 - May 9, 10 - 10:30 a.m.



## Ballet / Tap

**Cost:** \$80 resident / \$100 non - resident

**Age:** 3 - 5 years

**Location:** RCN/WEC

Students will get an introduction to the basics of ballet & tap combined into one class. Participants will learn body alignment and control while building self-confidence and toning muscles. Girls please wear a black leotard, pink tights, pink ballet slippers and tap shoes. Boys, please wear black shorts and a white t-shirt. If you need to purchase attire, please call **281.485.6030**. A minimum of 5 must register 7 days prior to class start date. Please note all classes will register with a 20 percent down payment and must pay remaining balance to the instructor on the first scheduled day of class. *Cash or check only.*

6378, Wed., Jan. 11 - Mar. 1, 9:30 - 10:15 a.m. (RCN)

6379, Thur., Jan. 12 - Mar. 2, 9:30 - 10:15 a.m. (WEC)

6381, Wed., Mar. 22 - May 10, 9:30 - 10:15 a.m. (RCN)

6380, Thur., Mar. 23 - May 11, 9:30 - 10:15 a.m. (WEC)

## Creative Dance

**Cost:** \$80 resident / \$100 non - resident

**Age:** 2 - 3 years

**Location:** RCN/WEC

Bring your little dancers for 30 minutes of creative and fun dance. They'll learn beginning moves and have a great time. Girls should wear a black leotard, pink tights, and pink ballet slippers. Boys, please wear black shorts and a white t-shirt. If you need to purchase attire, please contact Stephanie at **281.485.6030**. Pre-registration required, participants must pay a 20 percent down payment and the remaining balance is due to the instructor on the first scheduled day of class. *Cash or check only.*

6397, Wed., Jan. 11 - Mar. 1,  
9 - 9:30 a.m. (RCN)

6398, Thur., Jan. 12 - Mar. 2,  
9 - 9:30 a.m. (WEC)

6400, Wed., Mar. 22 - May 10,  
9 - 9:30 a.m. (RCN)

6399, Thur., Mar. 23 - May 11,  
9 - 10:15 a.m. (WEC)



**FULL TIME OR PART TIME.  
WE HELP YOU FIND TIME  
TO GET YOUR BSN.**



Gain knowledge and skills beyond clinical nursing with a BSN from UHCL Pearland Campus. Our RN to BSN program offers full-time and part-time tracks designed to give you better career opportunities. Learn more at [www.uhcl.edu/nursing](http://www.uhcl.edu/nursing).

The choice is clear.

University of Houston  Clear Lake

Pearland Campus

# Youth/Teens



## COMING SOON!

We know it's still winter, but are you ready for **SUMMER CAMP?!**

Registration begins **February 13, 2017.**

Call **281.412.8900** for more details.



## ARCHERY BEGINNER LESSONS

**Cost:** \$56.25 resident / \$70.85 non - resident

**Age:** 8 - 18 years

**Location:** Stella Roberts Recycling Center

Our Archery Beginner Lessons is a perfect fit for youth participants of any ability wanting to get involved in the sport of target archery. If you are new to the sport of archery or a beginner archer looking for an introductory program to sign up for, our beginner lessons will teach you the skills you need to get started. In this 5-week course you will learn fundamental skills such as range safety and proper shooting form, play exciting games and earn achievement awards. All of our beginner archers must demonstrate a fundamental understanding of the 5 components of Archery before advancing to the JOAD program.

6465, Wed., Jan. 11 - Feb. 8, 6 - 7 p.m.

6466, Wed., Feb. 22 - Mar. 29, 6 - 7 p.m.

6473, Wed., Apr. 12 - May 10, 6 - 7 p.m.

## JUNIOR OLYMPIC ARCHERY

**Cost:** \$68.75 resident / \$85.93 non - resident

\$185.62 resident / \$232.06 non - resident

**Age:** 8 - 18 years

**Location:** Stella Roberts Recycling Center

Our Junior Olympic Archery Development (JOAD) Program is intended for archers ages 8 to 18, with a desire to learn and compete in the sport of archery. JOAD archers can train to compete in local and regional tournaments and can earn a seat on a youth world team to compete in other countries representing the United States on behalf of USA Archery; or students can learn archery without being competitive. All interested JOAD archers must successfully complete our Explorer Archery Program to be eligible - no exceptions.

6467, Thur., Jan. 12 - Feb. 9, 6 - 7:15 p.m.

6468, Thur., Jan. 12 - Feb. 9, 7:20 - 8:35 p.m.

6469, Thur., Feb. 23 - Mar. 30, 6 - 7:15 p.m.

6470, Thur., Feb. 23 - Mar. 30, 7:20 - 8:35 p.m.

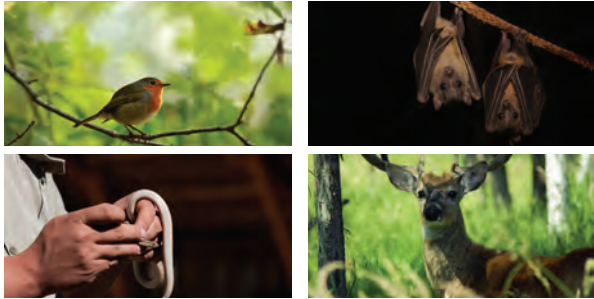
6475, Thur., Apr. 13 - May 11, 6 - 7:15 p.m.

6476, Thur., Apr. 13 - May 11, 7:20 - 8:35 p.m.

6471, Thur., Jan. 12 - May 11, 6 - 7:15 p.m. (entire session)

6472, Thur., Jan. 12 - May 11, 7:20 - 8:35 p.m. (entire session)

# Youth/Teens



## BIRDS, BATS, & BEYOND

**Cost:** \$50 resident / \$62.50 non - resident

**Age:** 6 - 12 years

**Location:** WEC

Learn cool facts about all kinds of wild animals that live in Pearland. Each week a different animal, like birds, bats, turtles, opossums, deer and even snakes will be featured. The course also includes interactive, fun activities including coloring animal pictures, completing puzzles, and concocting arts and crafts.

6525, Tues. / Thur., Jan. 10 - 26, 4 - 4:45 p.m.

6526, Tues. / Thur., Feb. 7 - 23, 4 - 4:45 p.m.

6527, Tues. / Thur., Mar. 21 - Apr. 6, 4 - 4:45 p.m.



## SAT/ACT PREP COURSE

**Cost:** \$100

**Age:** 13 - 18 years

**Location:** RCN

This hands-on training course prepares students for both the SAT and ACT college entrance exams. All course participants will receive a 300-page material packet with fundamentals, strategies and exercises for all components of each test. In addition, they will receive access to complete SAT and ACT practice exams. A major focus of the course is critical foundational skills (particularly in grammar and math) that many students have not mastered. Students will have access to the SMATCOE website that contains a host of reinforcement exercises to build up their skills through practice in order for them to be better prepared for the college entrance exams.

6638, Mon., Jan. 23 - Feb. 27, 6 - 7:30 p.m.

6639, Mon., Apr. 10 - May 15, 6 - 7:30 p.m.

## PEARLAND YOUTH ACTION COUNCIL

**Would you like to be a YAC?** The Pearland Youth Action Council (YAC) serves as the voice of the Pearland teen community and promotes youth leadership and responsibility through service and community involvement. Since YAC began in 2009, the organization continues to benefit not only YAC members but the representation of Pearland's youth for the better. Applicants must be Pearland residents between the ages of 12 - 18, possess leadership skills and have an interest in becoming involved in the Pearland community. Applicant selection is based on leadership ability, commitment to serve and a vision of the future. If you meet the criteria and are looking for an opportunity to represent the youth of Pearland, you are encouraged to apply.



# Youth/Teens



## **PRESIDENT'S DAY BASKETBALL CLINIC BY THE HOUSTON ROCKETS**

**Age:** 6 - 16 years (Boys & Girls)

**Cost:** \$50

**Clinic Day:** Mon., Feb. 20

**Time:** 9 a.m. - 12 p.m.

**Instructors:** Houston Rockets

Basketball Staff

**Location:** RCN

This one-day clinic is designed to improve the skill level of any youth basketball player. During the clinic, students will receive professional instruction about all areas of the game, including dribbling, shooting, passing, blocking, and defense, while learning lessons about good sportsmanship and other team concepts. As a bonus, participants will receive a ticket to a Rockets game. Train with expert coaches from the National Basketball Academy and experience the fun and excitement of being associated with an NBA team.

## **SPRING BREAK BASKETBALL CLINIC BY THE HOUSTON ROCKETS**

**Age:** 6 - 16 years (Boys & Girls)

**Cost:** \$115 per child

**Clinic Days:** Mar. 13 - Mar. 15

(Mon. - Wed.)

**Time:** 9 a.m. - 12 p.m.

**Instructors:** Houston Rockets

Basketball Staff

**Location:** RCN

The Houston Rockets and the National Basketball Academy Spring Break Clinic is designed for boys and girls who are looking to improve their basketball skills. Throughout the clinic, participants will receive personal instruction in all areas of the game, including dribbling, shooting, passing, blocking and defense, while learning lessons such as good sportsmanship and the "team" concept. Train with expert coaches from the National Basketball Academy and experience the fun and excitement of being associated with an NBA team.

## **HOLIDAY BASKETBALL CLINIC BY THE HOUSTON ROCKETS**

**Age:** 6 - 16 years (Boys & Girls)

**Cost:** \$115

**Clinic Days:** Dec. 26 - Dec. 28,

(Mon. - Wed.)

**Time:** 9 a.m. - 12 p.m.

**Instructors:** Houston Rockets

Basketball Staff

**Location:** RCN

This three-day clinic is designed to improve the skill level of any youth basketball player. Come spend the holiday having fun while improving your basketball skills through drills and competitions. As a bonus, participants will receive a ticket to a Rockets game. Train with expert coaches from the National Basketball Academy and experience the fun and excitement of being associated with an NBA team.

Register online at [tnbabasketball.com](http://tnbabasketball.com) or call 216.378.0932 for more information.

# Youth/Teens

## BRICKS 4 KIDZ - ROBOTICS



**Cost:** \$113 resident /  
\$141.25 non - resident

**Age:** 9 - 13 years

**Location:** WEC

Experience the cutting edge of technology with the introduction of LEGO® MINDSTORMS EV3 Robotics. Students will be captivated as they incorporate the newest generation of

motors, sensors and software by programming their commands directly into the intelligent brick. Test their capabilities by moving an object with a robotic claw, building a robot that draws, or creating a mouse trap. Test their capabilities by building a base tri-bot and creating a variety of add-ons to modify the model.

Our extensive list of builds is sure to provide the complete fundamental components of robotics at its best.

6435, Tues., Jan. 10 - Feb. 28, 5:30 - 7 p.m.  
(Rover Bots)

6436, Tues., Mar. 21 - May 9, 5:30 - 7 p.m.  
(Contraption Concepts)

## BRICKS 4 KIDZ - AFTER SCHOOL



**Cost:** \$94 resident /  
\$117.50 non - resident

**Age:** 5 - 12 years

**Location:** WEC

Are you ready for the adventure of a lifetime? Put on your hiking boots and camouflage; you're about to enter Jurassic Brick Land! In this course, students will build a world that comes to life with gentle Brontosaurus, ferocious Velociraptor, terrifying T. Rex and more.

We'll learn fascinating facts about amazing dinosaurs and other extinct animals that roamed the earth and swam the seas during the age of dinosaurs. Show your building skills using specialized project kits. Come learn, build and play at Jurassic Brick Land after-school classes.

6432, Tues., Jan. 10 - Feb. 28, 4:30 - 5:30 p.m.  
(Jurassic Brick Land)

Shiver me timbers as we explore the popular culture behind the life of a pirate. Build a motorized pirate ship, a helm and an anchor, as we batten down the hatches and prepare the mutiny. Protect the hands on deck by building a launching trebuchet. Beware me mateys, if it's too late, you must abandon ship and build a rowboat to escape. Watch out for crocodiles. Anchors aweigh.

6433, Tues., Mar. 21 - May 9, 4:30 - 5:30 p.m. (A Pirate's Quest)



## KARATE

**Cost:** \$50 cash only

**Age:** 5 - 12 years

**Location:** RCN / WEC

Karate is a sport, a self-defense and a confidence builder. Participants must have a uniform which may be purchased from the instructor the first day of class for \$30 cash. You may try the first lesson for FREE before you register to make sure you wish to participate in the class. New students are accepted the first three weeks. There will be NO registrations after the first three weeks of class and NO refunds. (NOTE: Additional fees may apply for tournament entry and for belt advancement tests. Tournaments are not required for the class but are required for belt advancement tests. Advancing in rank (belt color) is optional. For more information about the Karate program, email [askgray@pdq.net](mailto:askgray@pdq.net) or call 281.482.3004, or log on to [vimeo.com/41596792](http://vimeo.com/41596792). Register on-site only. *No class the week of Spring Break.*

Tue., Jan. 10 - Mar. 28, 6:30 - 7:30 p.m. (RCN)

Wed., Jan. 11 - Mar. 29, 6:30 - 7:30 p.m. (WEC)

Tue., Apr. 4 - May 30, 6:30 - 7:30 p.m. (RCN)

Wed., Apr. 5 - May 31, 6:30 - 7:30 p.m. (WEC)



# Youth/Teens



## FIRST AID

**Cost:** \$45

**Age:** 15+ years

**Location:** RCN  
(Natatorium Meet Room)

The purpose of this course is to help participants identify and eliminate potentially hazardous conditions in their environment, recognize emergencies and make appropriate decisions for first aid care. It teaches skills that participants need to know in order to provide immediate care of a suddenly ill or injured person until more advanced medical care arrives.

These practices require strenuous activity. If you have a medical condition or disability that might prevent you from taking part in the practice sessions, or if you have any questions at all about your ability to participate fully in the course, you should discuss it with your health care provider before you start the course. *The certification is valid for two years, through the American Red Cross.*

6651, Sun., Jan. 22, 8 a.m. - 3 p.m.

6652, Sun., Feb. 12, 8 a.m. - 3 p.m.

6653, Sun., Mar. 19, 8 a.m. - 3 p.m.

6654, Sun., Apr. 16, 8 a.m. - 3 p.m.

## FIT FOR YOUTH ORIENTATIONS

**Cost:** Free

**Age:** 10 - 15 years

**Location:** RCN

During Orientation "A," facility attendants will introduce the common policies and procedures of the weight room while demonstrating proper technique on each piece of equipment. The goal of the orientation is to ensure youth gain proper knowledge and understanding of the weight room equipment. Upon successful completion of both orientation "A" & "B" the youth will be granted access to utilize the weight room with direct parent/guardian supervision. Registration is required. Please contact the Parks & Recreation office to register.

Saturdays, 12 - 1 p.m.



**Cost:** \$150 resident / \$187.50 non-resident

**Age:** 8 - 12 years

**Location:** WEC

Class will provide hands-on media production training to build storytelling skills. Kids will be taught how to use a camera, create a storyboard as they plan and develop a prop video. The focus of the course is to not only introduce kids to media production

but to also promote creative thinking and self-expression in a collaborative and cooperative environment.

6532, Thur., Jan. 12 - Feb. 16, 5:30 - 7 p.m.

6533, Thur., Mar. 23 - Apr. 27, 5:30 - 7 p.m.

## ADULTS & CHILD CPR/AED

**Cost:** \$65

**Age:** 15+ years

**Dates:** TBA

**Location:** Natatorium Meet Room

This hands-on skills training prepares participants to respond to breathing and cardiac emergencies for adults and children. It also teaches the skills and knowledge needed to provide care for victims of sudden cardiac arrest through the safe use of an automated external defibrillator (AED). These practices require strenuous activity. If you have a medical condition or disability that might prevent you from taking part in the practice sessions, or if you have questions about your ability to participate fully in the course, you should discuss it with your healthcare provider before you start the course.

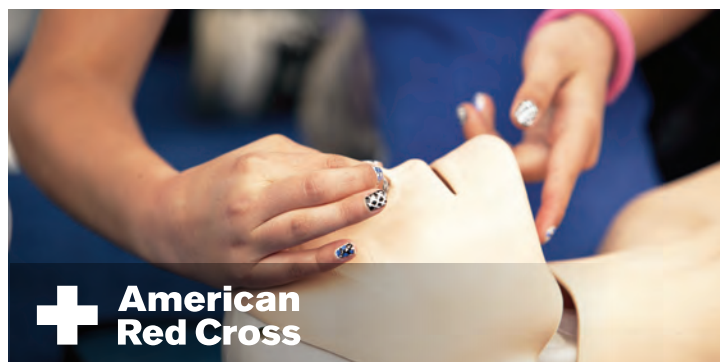
*The certification for Adult CPR/AED is valid for two years.*

6647, Sat., Jan. 21, 8 a.m. - 3 p.m.

6648, Sat., Feb. 11, 8 a.m. - 3 p.m.

6649, Sat., Mar. 18, 8 a.m. - 3 p.m.

6650, Sat., Apr. 15, 8 a.m. - 3 p.m.



# Youth/Teens

## ADVENTURE CAMP - SPRING BREAK

**Cost:** \$125 resident /  
\$155 non - resident

**Age:** 6 - 12 years

**Location:** RCN

You don't have to wait until summer to enjoy Camp style fun. In true camp fashion, we will pack the day with exciting activities and games. Participants will need to pack a lunch, two snacks and swimsuit/towel each day and we will provide the fun in a safe and secure environment.

6536, Mon. - Fri., Mar. 13 - Mar. 17, 8 a.m. - 5 p.m.



## ADVENTURE CAMP - EXTENDED CARE

**Cost:** \$12 resident /  
\$15 non - resident

**Age:** 6 - 12 years

**Location:** RCN

Whether you're arriving early or staying late, our Extended Care program is perfect for campers who are looking to stuff a bit more fun into their day. Extended Care Campers will have the chance to enjoy even more supervised recreational activities, just in a less structured environment than the regular camp day. The extended care program is for Adventure Camp participants only. A limited number of spaces are available.

6534, Mon. - Fri., Mar. 13 - Mar. 17, 7 - 8 a.m.  
(Extended Care: "Early Risers")

6535, Mon. - Fri., Mar. 13 - Mar. 17, 5 - 6 p.m.  
(Extended Care: "Home Stretch")

*You can't buy love, but you can*

# ADOPT.

from the City of Pearland Adoption Center

Thinking about adding a pet to your family? Millions of companion animals in shelters across America are waiting for you. Navigating the process isn't as hard as you think. Let us help you find the perfect pet and discover how amazing rescuing a pet can be.



- Adoption helps stop pet overpopulation
- Adoption saves lives
- Adoption gives a second chance
- Adoption often costs less

### Pearland Adoption Center

2002 Old Alvin Rd.  
Pearland, Texas 77581  
Phone: 281.652.1970



[pearlandtx.gov/adoptapet](http://pearlandtx.gov/adoptapet)



# Learn. Play. Grow.

## City of Pearland Parks & Recreation

The Parks & Recreation Department is dedicated to providing quality facilities, programs, events and services by being responsive to community needs, accountable and trustworthy. The department adheres to high standards through the delivery of excellent customer service, quality parks, facilities, programs and events that Pearland residents have come to depend on with amenities including:

- Park Land, Open Spaces and Trails
- Recreation Facilities
- Early Childhood through Senior Adult Programming
- Health & Fitness Classes
- Cultural Arts
- Summer Camps
- Youth & Adult Athletic Leagues
- Community Volunteer Activities



*City of Pearland Parks and Recreation is dedicated to multiplying the Q4 factor: quality facilities, quality programs, quality service for your quality of life.*



[pearlandparks.com](http://pearlandparks.com)

# Adaptive Recreation



## WHEELCHAIR BASKETBALL / FOOTBALL

**Cost:** Free

**Age:** 10+

**Location:** RCN

Open to all persons with physical disabilities who can move independently in their wheelchairs. Athletes can determine whether to play wheelchair football or wheelchair basketball. Come out and practice, play and socialize on one full court. *No registration required.*

Thur., Jan. 12 - May 18, 7 - 9 p.m.

## ADAPTIVE BASKETBALL

**Cost:** Free

**Age:** 8+

**Location:** RCN

Have fun while building fitness, coordination and teamwork. Participants learn basic basketball skills of dribbling, passing, shooting, playing defense, etc. Open to all skill levels and all persons with developmental disabilities. Parents, guardians and caregivers must assist those with special needs to make this a rewarding experience.

Thur., Jan. 12 - May 18, 6 - 7 p.m.



## BOWLING

**Cost:** Free

**Age:** 10+

**Location:** Alvin Bowling Center

Join us for bowling and make new friends, improve your game and enjoy the support of other participants. Set a personal goal and work on improving every week. Parents, guardians and caregivers must assist those with special needs to make this a rewarding experience. Bowling ramps and bumpers are available. *Open to all skill levels.*

Thur., Jan. 12 - May 11, 1 - 2 p.m.



## PARALYMPIC ARCHERY

**Cost:** Free

**Age:** 10+

**Location:** Bass Pro Shop,  
1000 Basspro Dr., Pearland, Texas

Come join us at the Bass Pro Shop at the Beltway 8 / Hwy. 288 intersection for our Paralympic Archery program. Bring your own bow if you have one, or one will be provided for you if needed. This class meets on the 2nd and 4th Wed. of every month.

Must RSVP to [lfrench@pearlandtx.gov](mailto:lfrench@pearlandtx.gov) by the Tues. before the class.

Wed., Jan. 25 - May 10, 2 - 4 p.m.

## GOALBALL FOR THE VISUALLY IMPAIRED

**Cost:** Free

**Age:** 8+

**Location:** RCN

Goalball is a sport specifically designed for blind or visually impaired individuals. Participants will play in teams and try to roll/throw a ball that has bells embedded in it into their opponent's goal. Sessions begin on Jan. 18 and will take place on the 1st and 3rd Wed. of the month. Partially sighted participants will be required to wear eyeshades to play. All equipment will be provided.

Must RSVP to [lfrench@pearlandtx.gov](mailto:lfrench@pearlandtx.gov).

Wed., Jan. 18 - May 10, 6 - 7 p.m.



# Adaptive Recreation

## BINGO NIGHT

**Cost:** Free

**Age:** 8+

**Location:** RCN

Join us for Friday Night Bingo. Come out for a night of fun, snacks and prizes. This program is open to all individuals with a developmental disability. Parents, guardians and caregivers must assist those with special needs to make this a rewarding experience for everyone. RSVP required, limited to the first 100 participants.

RSVP to [lfrench@pearlandtx.gov](mailto:lfrench@pearlandtx.gov).

Fri., Feb. 17, 6:30 - 8 p.m.

Fri., Apr. 28, 6:30 - 8 p.m.



## ARTS AND CRAFTS

**Cost:** Free

**Age:** 6+

**Location:** WEC

Come join us for an hour long class filled with fun arts and crafts activities! Each class participants will create a piece of art they can be proud to show off or even give away as a gift. Class starts Jan. 9 and sessions are held every other Monday. Open to persons with developmental disabilities.

Participants must RSVP by Fri. before class to [lfrench@pearlandtx.gov](mailto:lfrench@pearlandtx.gov) or **713.540.1615**. Class runs in conjunction with Adaptive Cooking.

Mon., Jan. 9 - May 15,  
11 a.m. - 1 p.m.



## ADAPTIVE COOKING

**Cost:** Free

**Age:** 10+

**Location:** WEC

The class will go over the basics of cooking such as measuring, mixing, prepping, baking and many other things. Starting Jan. 9, each class will last approximately an hour and a half and will run every other Monday for 12 weeks (6 classes). After each session, every chef will receive a cookbook of the items they made and get to eat / take home what they cook.

Participants must RSVP by Fri. before class to [lfrench@pearlandtx.gov](mailto:lfrench@pearlandtx.gov) or **713.540.1615**.

Mon., Jan. 9 - May 15,  
11 a.m. - 1 p.m.



## ADAPTIVE YOGA

**Cost:** Free

**Age:** 10+

**Location:** WEC

Offered by the National Multiple Sclerosis Society, this course teaches Classical Hatha Yoga, Mastery of Breath, the practice of Restorative postures, how to stretch, proper meditation, and the effect of stress and attitude on symptoms.

RSVP to [lissa.giacco@txh.nmss.org](mailto:lissa.giacco@txh.nmss.org) or call **281.526.8967** ext. 2.

Saturdays, 10 a.m. - 12 p.m.

*Providing Pearland's Pets with the finest veterinary services since 1991*



*2 Locations, 6 Doctors*



6034 West Broadway  
Pearland, Texas 77581  
281.485.9840 • 281.485.5618 fax  
[www.westsideveterinaryhospital.com](http://www.westsideveterinaryhospital.com)

9223 Broadway Suite 107  
Pearland, Texas 77584  
281.997.1044 • 281.997.1411 fax  
[www.pearlandvetclinic.com](http://www.pearlandvetclinic.com)

## *Services Provided*

**Westside Veterinary Hospital offers a full range of services including:**

- Examinations
- Vaccinations
- State of the Art in house lab analysis\*
- Dental care\*
- Radiography\*
- Pharmaceutical services
- Microchipping
- Parasite prevention
- General surgeries including spaying, neutering and ear cropping\*
- Boarding\*



*\*\*Available at our main hospital\*\**

# Adults

## MEN'S BASKETBALL LEAGUES

**Cost:** \$335 per team at registration

**Registration Dates:** Dec. 12 - Jan. 6 (Winter)  
Feb. 6 - Mar. 6 (Spring)

**Format:** 7 regular season games  
+ single - elimination seeded playoffs

**Play begins:** The week of Mar. 20

**Location:** RCN or Pearland ISD Facilities

Indoor basketball league open to men 18 & older offered at RCN or Pearland ISD facilities. Registration fee includes a 7 - game regular season schedule, single elimination playoff, officials, and awards. For more information, log on to [teamsideline.com/pearland](http://teamsideline.com/pearland). Registration is online at [pearlandparks.com](http://pearlandparks.com).

*Teams must pay in full to register.*

6376, Mon., Jan. 16 - Mar. 13, 6:30 - 10:30 p.m.  
(Men's Recreational)

6373, Mon., Mar. 20 - May 15, 6:30 - 10:30 p.m.  
(Men's Recreational)

6374, Wed., Mar. 22 - May 17, 6:30 - 10:30 p.m.  
(Men's Competitive)

6375, Thur., Mar. 23 - May 18, 6:30 - 10:30 p.m.  
(Men's Recreational)

## KARATE

**Cost:** \$50 cash only

**Age:** 13+ years

**Location:** RCN/WEC

Karate is a sport, self-defense and a confidence builder. Participants must have a uniform which may be purchased from the instructor the first day of class for \$30 cash. Try the first lesson for FREE. No new registrations will be accepted after the first three weeks of class. For more information about the Karate program, contact [askgray@pdq.net](mailto:askgray@pdq.net) or **281.482.3004**, or go online to view video of the class at [vimeo.com/41596792](http://vimeo.com/41596792). Register on-site only.

*No class the week of Spring Break.*

Tues., Jan. 10 - Mar. 28, 7:30 - 8:30 p.m. (RCN)

Wed., Jan. 11 - Mar. 29, 7:30 - 8:30 p.m. (WEC)

Tues., Apr. 4 - May 30, 7:30 - 8:30 p.m. (RCN)

Wed., Apr. 5 - May 31, 7:30 - 8:30 p.m. (WEC)



## ADULT SOFTBALL LEAGUES

**Cost:** \$315 (included in the cost is a \$80 forfeit deposit) + \$20 cash at the plate for umpires

**Registration Dates:** Feb. 6 - Mar. 6

**Format:** 14-regular season games + single-elimination seeded playoffs

**Play begins:** The week of Mar. 20

**Location:** SCR

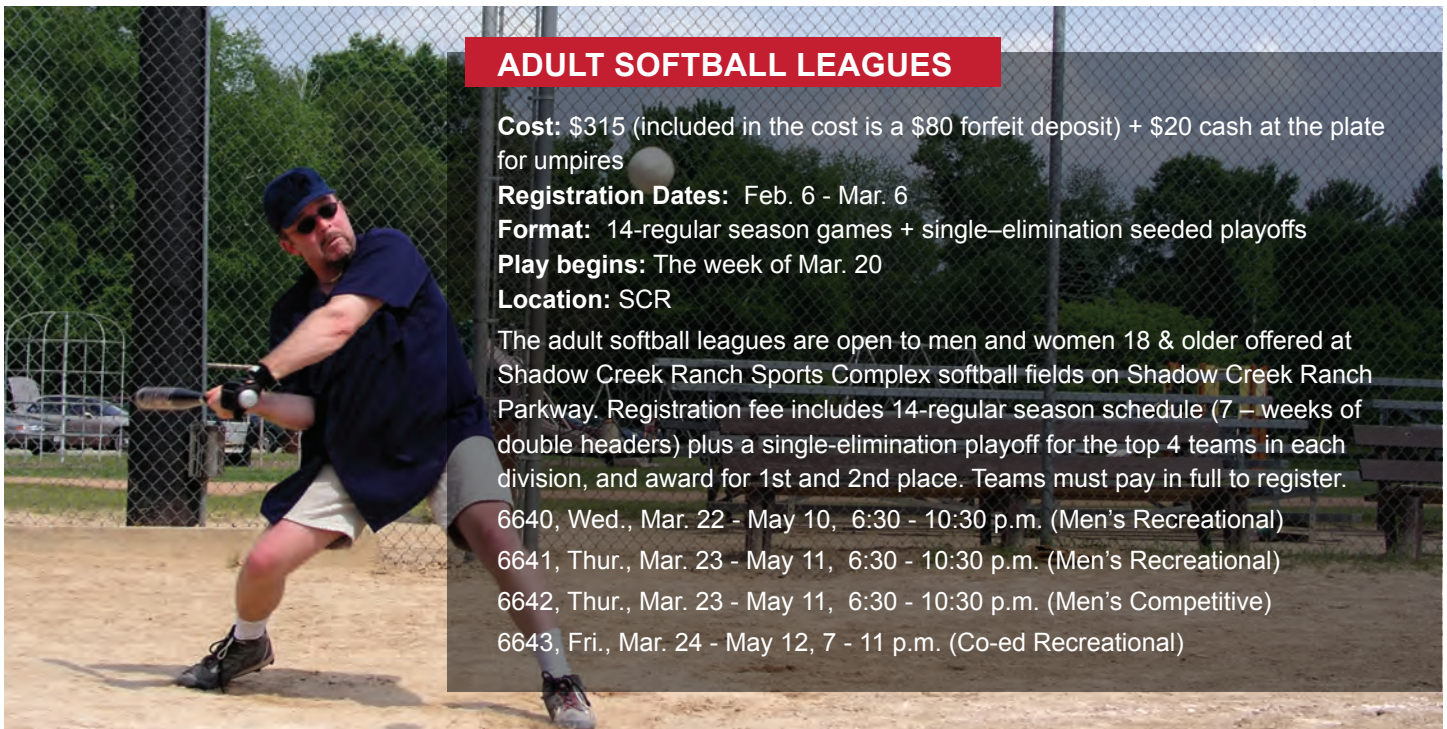
The adult softball leagues are open to men and women 18 & older offered at Shadow Creek Ranch Sports Complex softball fields on Shadow Creek Ranch Parkway. Registration fee includes 14-regular season schedule (7 - weeks of double headers) plus a single-elimination playoff for the top 4 teams in each division, and award for 1st and 2nd place. Teams must pay in full to register.

6640, Wed., Mar. 22 - May 10, 6:30 - 10:30 p.m. (Men's Recreational)

6641, Thur., Mar. 23 - May 11, 6:30 - 10:30 p.m. (Men's Recreational)

6642, Thur., Mar. 23 - May 11, 6:30 - 10:30 p.m. (Men's Competitive)

6643, Fri., Mar. 24 - May 12, 7 - 11 p.m. (Co-ed Recreational)



# Adults



## WOMEN'S VOLLEYBALL LEAGUES

**Cost:** \$225 per team at registration  
**Registration Dates:** Feb. 6 - Mar. 6  
**Format:** 7 regular season games + single - elimination seeded playoffs  
**Play begins:** Mar. 22  
**Location:** RCN

Indoor volleyball open to women 18 & older offered at RCN. Registration fee includes a 7-match regular season schedule, single elimination playoffs, officials and awards.

For more information, log on to

[teamsidelines.com/pearland](http://teamsidelines.com/pearland). Registration is online at [pearlandparks.com](http://pearlandparks.com). Teams must pay in full to register.

6377, Wed., Mar. 22 - May 17, 6:30 - 10:30 p.m.  
(Women's Recreational)

## ADULT CO-ED KICKBALL LEAGUE

**Cost:** \$295 per team (included in cost is a \$60 forfeit deposit) +\$15 cash at the plate for umpires.

**Registration Dates:** Feb. 6 - Mar. 6

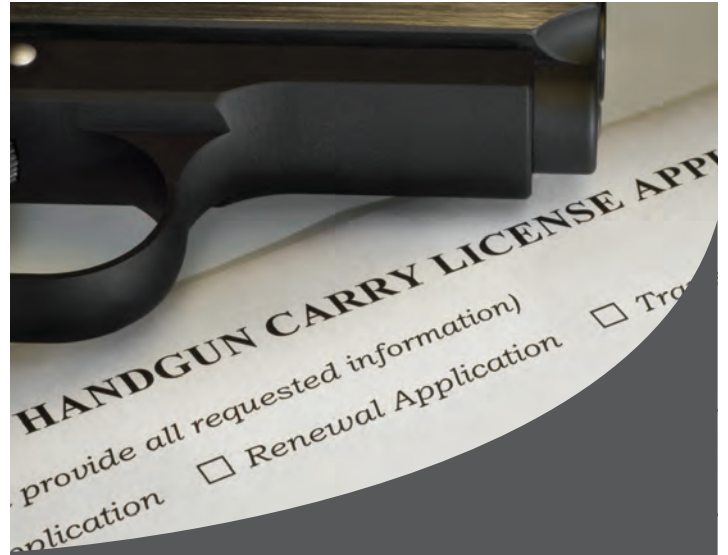
**Format:** 14-regular season games + single-elimination seeded playoffs

**Play begins:** Mar. 21

**Location:** SCR

Bring your team out for an old school game of kickball! Have fun with us as you relive the game of your youth. Registration fee includes a 14-game regular season schedule plus a single-elimination playoff for the top 4 teams in each division. For more information, log on to [teamsidelines.com/pearland](http://teamsidelines.com/pearland). Registration online at [pearlandparks.com](http://pearlandparks.com). Team must pay in full to register.

6645, Tues., Mar. 21 - May 9, 6:30 - 10:30 p.m.



## CONCEALED HANDGUN LICENSE CLASS

**Cost:** \$79, \*\$10 discount for veterans, first responders, school teachers and active adults

**Age:** 19+ years

**Location:** RCN

Take this class to obtain a Texas Concealed Handgun License, which allows individuals to lawfully carry a handgun in Texas and 34 reciprocal states. Fee includes classroom training, range, targets, and forms (application fee to the State and fingerprinting not included). Topics covered: Legal Aspects of Concealed Carry, Safe Handling and Storage, Non-Violent Dispute Resolution, Use of Force Laws, Basic Firearm Safety and Operation, Risk Avoidance, and Civil Liability. Every effort will be made to provide a safe, comfortable and enjoyable shooting experience for all. Each student will need the following: driver's license, closed toed shoes, handgun: revolver (minimum .32 caliber) or semi-auto (minimum .380), ammunition: minimum 50. Rental handguns are available for \$30 (includes ammo).

Log on to [goheeled.com/enroll](http://goheeled.com/enroll) to sign up.

6474, Sat., Jan. 21, 8 a.m. - 3 p.m.

6461, Sat., Feb. 25, 8 a.m. - 3 p.m.

6462, Sat., Mar. 25, 8 a.m. - 3 p.m.

6463, Sat., Apr. 22, 8 a.m. - 3 p.m.

6464, Sat., May 20, 8 a.m. - 3 p.m.



# Adults



FIT4MOM is the country's largest fitness program for moms. FIT4MOM Pearland offers fitness programs for every stage of motherhood including Fit4Baby prenatal classes, mom and baby/child Stroller Strides and Stroller Barre, Body Back mom, 5K/10K training sessions and our Village Moms Club. FIT4MOM help moms make strides in fitness, motherhood, and life! Find more information at [pearland.fit4mom.com](http://pearland.fit4mom.com). email [elizabethkelley@fit4mom.com](mailto:elizabethkelley@fit4mom.com) or call 832.736.0808.



## FUNDAMENTALS OF NUTRITION AND EXERCISE

**Cost:** \$80 resident / \$100 non-resident

**Age:** 18+ years

**Location:** RCN

Would you like to learn about nutrition and exercise and how they can make a difference in your life? Have you been diagnosed as pre-diabetic and told that you need lifestyle modifications? Are you overweight or obese and would like to lose some weight? Are you tired of paying thousands of dollars on programs that just sell you food? Or are you simply interested in sound nutrition and/or learning how to safely and effectively exercise? If so, this interactive 12-week class is for you. Come and learn the fundamentals with a nationally certified personal trainer and life coach, certified nutritionist and registered nurse. At the end of 12 weeks, you will learn why fad diets don't work, be able to calculate the amount of carbohydrate, fat and protein in your diet, understand portion control and learn tricks to overcome emotional eating to name a few. You will also learn sound exercise science and be oriented to the Recreation Center & Natatorium weight room. Start the journey to a new you now!  
*No class the week of Spring Break.*

6518, Thur., Feb. 2 - Apr. 27, 7:15 - 8:15 p.m.

## FIRST AID

**Cost:** \$45

**Age:** 15+ years

**Location:** RCN

The purpose of this course is to help participants identify and eliminate potentially hazardous conditions in their environment, recognize emergencies and make appropriate decisions for first aid care. It teaches skills that participants need to know in order to provide immediate care of a suddenly ill or injured person until more advanced medical care arrives. These practices require strenuous activity. If you have a medical condition or disability that might prevent you from taking part in the practice sessions, or if you have any questions at all about your ability to participate fully in the course, you should discuss it with your health care provider before you start the course. *The certification is valid for two years, through the American Red Cross.*

6651, Sun., Jan. 22, 8 a.m. - 3 p.m.

6653, Sun., Mar. 19, 8 a.m. - 3 p.m.

6652, Sun., Feb. 12, 8 a.m. - 3 p.m.

6654, Sun., Apr. 16, 8 a.m. - 3 p.m.



# Adults

## INTRO TO BIRDING WORKSHOPS



**Cost:** \$15 resident /  
\$18.75 non - resident

**Age:** 13+ years

**Location:** WEC

Want to learn more about birding but don't know where to start? Attend one of our birding workshops and we'll get you off on the right foot. Learn more about birding, what to look and listen for, and get tips and tricks from our local birding expert before getting out in the field.

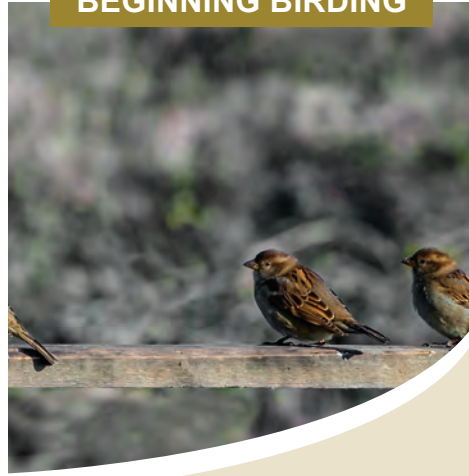
6528, Sat., Feb. 18, 9:30 - 11 a.m.

6529, Sat., Mar. 25, 9:30 - 11 a.m.

6530, Sat., Apr. 22, 9:30 - 11 a.m.

6531, Sat., May 20, 9:30 - 11 a.m.

## BEGINNING BIRDING



**Cost:** \$75 resident /  
\$93.75 non - resident

**Age:** 16+ years

**Location:** RCN

Birding has become a popular outdoor activity, enjoyed by approximately 85 million Americans. Texas hosts more species of birds than any other state in the United States and Brazoria County has more bird species than any other area in the North America. Sign up for our Beginning Birding class, and you'll learn how to select binoculars and field guides, how to identify birds using field marks, songs, and behavior, and ways to get more involved. We will go on several field trips in the local Pearland area, so you can practice your skills!

6519, Tues., Jan. 10 - 31,

8:30 - 10 a.m.

*Classroom dates: Jan. 10, Jan. 31*

6520, Tues., Feb. 14 - Mar. 7,

8:30 - 10 a.m.

*Classroom dates: Feb. 14, Mar. 7*

6521, Tues., Mar. 21 - Apr. 11,

8:30 - 10 a.m.

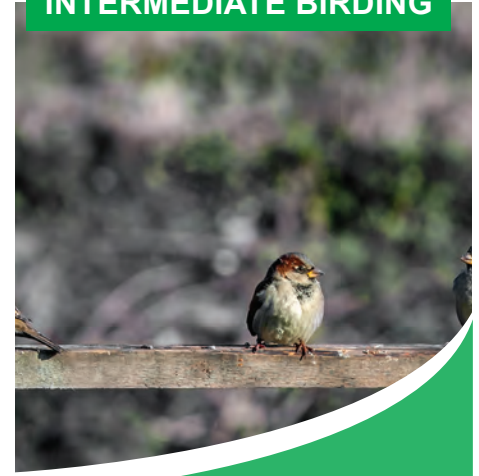
*Classroom dates: Mar. 21, Apr. 11*

6522, Tues., Apr. 18 - May 9,

8:30 - 10 a.m.

*Classroom dates: Apr. 18, May 9*

## INTERMEDIATE BIRDING



**Cost:** \$79.80 resident /  
\$99.75 non - resident

**Age:** 16+ years

**Location:** RCN

If you've already taken the Beginning Birding Class, or already have some birding experience and are ready to expand your birding knowledge and horizons, then this is the class for you! We will visit several neighboring cities for great out-of-town birding hotspots. *Park fees are not included in the class fees.*

6523, Thur., Jan. 12 - Mar. 2,  
8:30 - 10 a.m.

6524, Thur., Mar. 23 - May 11,  
8:30 - 10 a.m.

# Adults



## MONTHLY GARDEN LECTURES

**Cost:** Free

**Age:** 16+ years

**Location:** RCN

Keep Pearland Beautiful and the Brazoria County Master Gardeners are proud to be hosting a series of monthly lectures on a variety of gardening and yard care topics. Doors open at 6 p.m., lecture starts at 7 p.m. Come early and meet our members. Stay after the lecture for a Q & A session. These lectures will be on the 2nd Thur. of every month, visit [mykpb.org](http://mykpb.org) for monthly topics.

Thur., Jan. 12, 7 p.m.

Thur., Feb. 9, 7 p.m.

Thur., Mar. 9, 7 p.m.

Thur., Apr. 13, 7 p.m.

Thur., May 11, 7 p.m.

## ADULTS & CHILD CPR/AED



**Cost:** \$65

**Age:** 15+ years

**Location:** RCN

This hands-on skills training prepares you to respond to breathing and cardiac emergencies for adults and children. It also teaches the skills and knowledge needed to provide care

for victims of sudden cardiac arrest through the safe use of an automated external defibrillator (AED). These practices require strenuous activity. If you have a medical condition or disability that might prevent you from taking part in the practice sessions, or if you have any questions at all about your ability to participate fully in the course, you should discuss it with your health care provider before you start the course.

*The certification for Adult CPR/AED is valid for two years, through the American Red Cross.*

6647, Sat., Jan. 21, 8 a.m. - 3 p.m.

6648, Sat., Feb. 11, 8 a.m. - 3 p.m.

6649, Sat., Mar. 18, 8 a.m. - 3 p.m.

6650, Sat., Apr. 15, 8 a.m. - 3 p.m.



## LINE DANCE WITH THE LINE DANCE QUEEN

**Cost:** \$10 per class

**Age:** 18+ years

**Location:** WEC

Mixed level classes offered for all levels. Dress in comfortable attire because you will be moving to the BEAT! For more information, visit [linedancequeen.com](http://linedancequeen.com) or call **713.253.2610**.

Tues. / Thur., 7:15 - 8:30 p.m.

# Senior Adults



## LINE DANCING

**Cost:** Free

**Age:** 50+ years

**Location:** KAC

Convene with this group of dancers as they Wobble, Texas 2 Step, and Cha Cha.

*Membership is required to participate.*

Mon./Thur., Jan. - May, 9:30 a.m.

## FIELD TRIPS

**Cost:** Van fee - \$2 Pearland, \$5 Outside of Pearland (Must pay admission fee of trip and other expenses)

**Age:** 50+ years

**Location:** KAC

Come join us as we travel and adventure to day trips in Houston and beyond. We take a field trip once a month and now we are venturing to bigger excursions – evening outings. Join in on the fun as we go to the Battle of the Bands, Rodeo and tour the Villa de Matel Covenant. Dates and times are to be determined as we get closer to the trip. Make sure to stay abreast online or with our monthly newsletter at [pearlandtx.gov/knappcenter](http://pearlandtx.gov/knappcenter).

*Membership is required to participate.*



## BEGINNERS SPANISH

**Cost:** \$35 (includes materials needed for instruction)

**Age:** 50+ years

**Location:** KAC

Are you wanting to learn another language or refresh on the Spanish you already know? If so, this course is for you. Spanish is taught by a certified teacher and she will be teaching the basic fundamentals in this class. Come learn and engage in learning with your peers. *Membership is required to participate.*

Fri., Jan. - May, 10:30 a.m.

## WRITING CLUB

**Cost:** Free

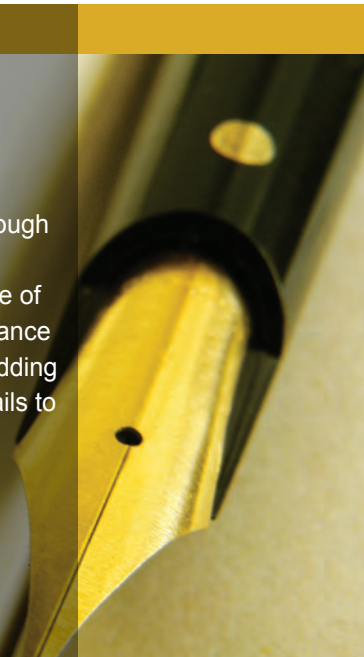
**Age:** 50+ years

**Location:** KAC

Come explore your writing skills with other writers through poetry, stories, and journal entries. With the assistance of a peer coach, you will enhance your writing skills - while adding creativity and intricate details to your script.

*Membership is required to participate.*

1st and 3rd Tues.,  
Jan. - May, 10 a.m.



## DRAMA

**Cost:** Free

**Age:** 50+ years

**Location:** KAC

### LIGHTS! CAMERA! ACTION!

Interested in theatre? Join this group of novice actors / actresses as we perform stage plays for our very own Knapp Activity Center members. Don't want to act? We have a place for you too! Join our production team with the behind the scenes roles. We meet twice a month and have productions bi-yearly.

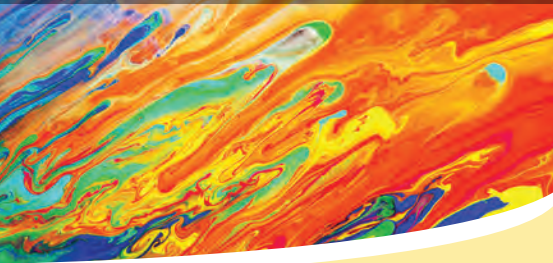
*Membership is required to participate.*

Meets 2nd Tues. at 10 a.m.



# Senior Adults

## PAINTING WITH ACRYLIC



**Cost:** \$48 (includes supplies & canvas)

**Age:** 50+ years

**Location:** KAC, RCN

After completion of this class, you will produce a painting that you can showcase with your family heirlooms. The class consists of five sessions with a different piece of artwork to paint each session.

*Membership is required to participate.*

KAC: Thur., Jan. - May, 12:30 p.m.

## BEGINNER CLOGGING

**Cost:** Free

**Age:** 50+ years

**Location:** KAC

Come join our beginners clogging class and learn the techniques of clogging.

*Membership is required to participate.*

Fri., Jan. - May, 12:15 p.m.



# BECOME A Member

Become a member of the Melvin Knapp Activity Center and join other active adults, 50 years of age and older.



The Center offers a variety of programs, activities, trips and classes that are either low-cost or absolutely free. Membership to the center is \$25 a year for Pearland residents and just \$50 a year for non - residents. There is something for everyone at the Melvin Knapp Activity Center. Drop in and take classes, exercise or socialize with friends. If you play cards, dominoes or other table games, the Center offers them all.



Visit [pearlandtx.gov/knappcenter](http://pearlandtx.gov/knappcenter) for more information.

2424 South Park Ave.  
Pearland, Texas 77581  
**281.652.1890**  
Mon. - Fri., 8 a.m. - 3 p.m.

# When is the last time **you** visited a **City Park?**



- Park and recreation facilities make communities desirable places to live, work, play, and visit, thereby contributing to the ongoing economic vitality of communities throughout the country.
- Programming provided through park and recreation agencies combat the national obesity epidemic through the development of healthy lifestyles, strong minds, and fit bodies.
- Park and recreation activities help deter crime and help our youth develop into contributing members of the community.
- Park and recreation experiences help older members continue their life experiences.
- Parks, greenways and open spaces are critical components to protecting and preserving the natural environment.

**Stop by a local park today.**

# Pearland TV: Your Government. Your Channel.

*Pearland TV has programming that you can't find anywhere else! PTV is on Comcast Ch. 16 and U-verse Channel 99 and streams online 24/7 at [pearlandtx.gov](http://pearlandtx.gov).*

## TUNE IN FOR:

- Live City Council and Planning and Zoning Meetings and rebroadcasts
- Bi-Weekly City News Updates
- Video highlights from Pearland Special Events
- Important information specific to your community
- It's your one stop shop for Pearland information and entertainment

*Take a minute or an hour to explore.*



[pearlandtx.gov](http://pearlandtx.gov)



Subscribe to our YouTube Channel!



[YouTube.com/copearland](https://www.youtube.com/copearland)

## City Directory

CITY HALL (MAIN LINE)	281.652.1600
ADMINISTRATION	281.652.1662
ANIMAL SERVICES & ADOPTION CENTER	281.652.1970
BUILDING PERMITS & INSPECTIONS	281.652.1638
CITY SECRETARY	281.652.1653
CONVENTION & VISITORS BUREAU	713.436.5595
CRIME VICTIM ASSISTANCE	281.997.4100
ECONOMIC DEVELOPMENT	281.997.3000
ENGINEERING	281.652.1637
FINANCE	281.652.1786
FIRE (NON - EMERGENCY)	281.997.5850
EMERGENCY MEDICAL SERVICES (NON - EMERGENCY)	281.997.5850
FIRE MARSHAL/ OFFICE OF EMERGENCY MANAGEMENT	281.997.4650
CODE ENFORCEMENT	281.652.1766
HOUSEHOLD HAZARDOUS WASTE (RESIDENTIAL PICK UP BY APPT.)	800.449.7587
HUMAN RESOURCES	281.652.1763
MUNICIPAL COURTS	281.997.5900
PLANNING & ZONING	281.652.1770
POLICE (NON - EMERGENCY)	281.997.4100
PROJECTS	281.652.1732
PUBLIC WORKS	281.652.1900
RECYCLING CENTER	281.489.2795
WATER/GARBAGE SERVICE	281.652.1603

## Parks and Recreation

### Facilities

PARKS & RECREATION MAIN OFFICE  
4141 Bailey Road  
Phone: 281.412.8900  
Hours: Mon. - Fri., 7:30 a.m. to 5:30 p.m.

VISIT [pearlandtx.gov/rcn](http://pearlandtx.gov/rcn)  
FOR MORE FACILITY INFORMATION.

MELVIN KNAPP ACTIVITY CENTER (KAC)  
2424 South Park Avenue  
Phone: 281.652.1890  
Facility Hours: Mon. - Fri., 8 a.m. - 3 p.m.

WESTSIDE EVENT CENTER (WEC)  
2150 Countryplace Parkway  
Phone: 281.412.8900  
Facility Hours: Classes as scheduled

RECREATION CENTER & NATATORIUM (RCN)  
4141 Bailey Road  
Phone: 281.412.8999

RECREATION CENTER HOURS:  
Mon. - Thur., 5:30 a.m. - 11 p.m.  
Fri., 5:30 a.m. - 10 p.m.  
Sat. - Sun., 8 a.m. - 8 p.m.

NATATORIUM HOURS:  
Mon. - Fri., 5:30 a.m. - 9 p.m.  
Sat., 8 a.m. - 8 p.m.  
Sun., 12 - 6 p.m.



[Facebook.com/cityofpearland](https://www.facebook.com/cityofpearland)



[Twitter.com/copearland](https://twitter.com/copearland)  
[Twitter.com/pearlandparks](https://twitter.com/pearlandparks)



[Instagram.com/copearland](https://www.instagram.com/copearland)



[YouTube.com/copearland](https://www.youtube.com/copearland)



[pearlandtx.gov](http://pearlandtx.gov)  
[pearlandparks.com](http://pearlandparks.com)

Sign up for City alerts at [pearlandtx.gov/alerts](http://pearlandtx.gov/alerts). Watch us on Pearland TV Comcast Channel 16, AT&T U - verse Channel 99, or streaming online. City Council meeting videos can be viewed at [pearlandtx.gov/citycouncilvideos](http://pearlandtx.gov/citycouncilvideos).