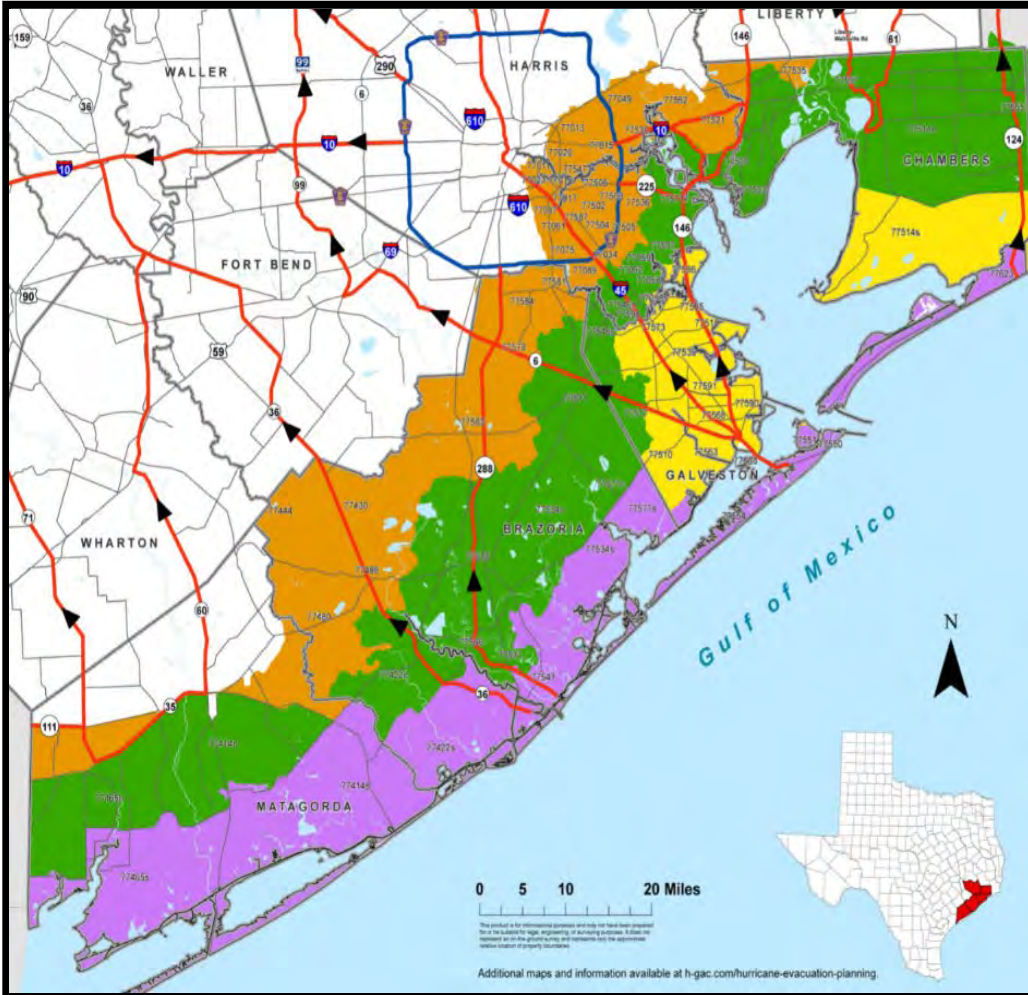


Know your evacuation zone

Mandatory evacuations will be based on zip codes. Be prepared to leave immediately after your zip code is called.



Click here to check COUNTY road conditions online.



Check STATE road conditions online

drivetexas.org

1-800-452-9292

Brazoria, Chambers, Galveston, Harris, and Matagorda Hurricane Evacuation Zip-Zones Coastal, A, B, C

Route Designation

- Evacuation Corridors
- Evacuation Connections
- Other Roads
- County Boundary

ZIP ZONE COASTAL				
77414s	77422s	77465s	77534s	77541
77550	77551	77554	77563	77576s
77623				
ZIP ZONE A				
77058s	77510	77514s	77518	77539
77563	77565	77568	77573	77586
77590	77591			
ZIP ZONE B				
77058n	77059	77062	77414n	77422n
77465n	77507	77511	77514n	77515
77517	77520	77523	77531	77534n
77546n	77546s	77560	77566	77571
77577n	77597	77598	77665	
ZIP ZONE C				
77011	77012	77013	77015	77017
77023	77029	77034	77049	77061
77075	77087	77089	77430	77444
77480	77486	77502	77503	77504
77505	77506	77521	77530	77535
77536	77547	77562	77578	77581
77583	77584	77587		

Some zip codes are split into north (n) and south (s) for evacuation purposes.



Revision Date: March 29, 2023
 Expiration Date: December 31, 2023
 Map Created by:
 Houston-Galveston Area Council

Evacuation Plans

How do I know when to evacuate?

Don't wait! It is NOT safe to wait. Plan to leave early.

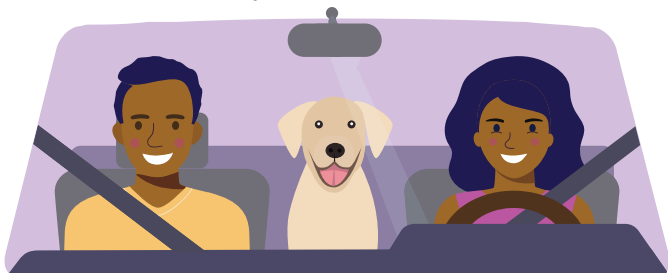
Mandatory evacuation orders will come from your local officials. Evacuations will be based on zip codes. Please be prepared to leave immediately. See pages 18-20 for specific information pertaining to your city's contact information.

Should I evacuate?

Do not wait until a mandatory evacuation is issued. Monitor conditions and leave early to avoid heavy traffic. Hurricanes and disasters can be extremely unpredictable and can become much more dangerous in a matter of hours.

Where should I go?

You may evacuate to any city you choose. Brazoria County residents who need shelter should go to the state designated location. If you do not have hotel reservations or family you can stay with, you may evacuate to the state designated shelter for Brazoria County residents.



What route should I take?

There are no mandatory routes you must take when evacuating from your city. In fact, there are several different routes you may take. When weather is good, take your family on an outing to check routes and become familiar with roadways and fuel locations.

The State has designated evacuation routes: SH-36, SH-288, SH-6, I-45, SH-290, HWY-59. If you choose to take an alternate route, essential services such as food, fuel, etc. are not guaranteed. Depending on the strength of the storm, contra-flow lanes might be open on SH-45, I-10, and SH-290 thirty-six (36) hours prior to the arrival of gale force winds. Plan your evacuation routes carefully (having more than one route planned).



When evacuating you should:

- Leave early and avoid heavy traffic
- Coordinate your departure with the people who will be traveling with you
- Notify an out-of-area person of your evacuation plans
- Make arrangements for your pets
- Pack your disaster supply kit into your vehicle
- Secure your home
- Double check your evacuation route and leave

Should I carry food and drinks in my car?

Yes! Stopping for food or drinks during a large scale evacuation may significantly delay you in getting to your destination. Some restaurants and stores along hurricane routes may be closed and those that are open are likely to be very crowded. Additionally, once you leave the evacuation route to purchase food or drinks, it may be difficult to re-enter the flow of traffic.

What can I do to help others?

Check on friends, neighbors and assist them if you can to make sure they can evacuate. If you cannot, help them get in touch with the local emergency management office.



If you choose not to evacuate

- NO SHELTERS will be open in Brazoria County.
- NO SERVICES will be available to you (sewer, water, electricity, etc).
- Hospitals will close.
- Ambulances will not run.
- Police and fire cannot respond until the storm passes.