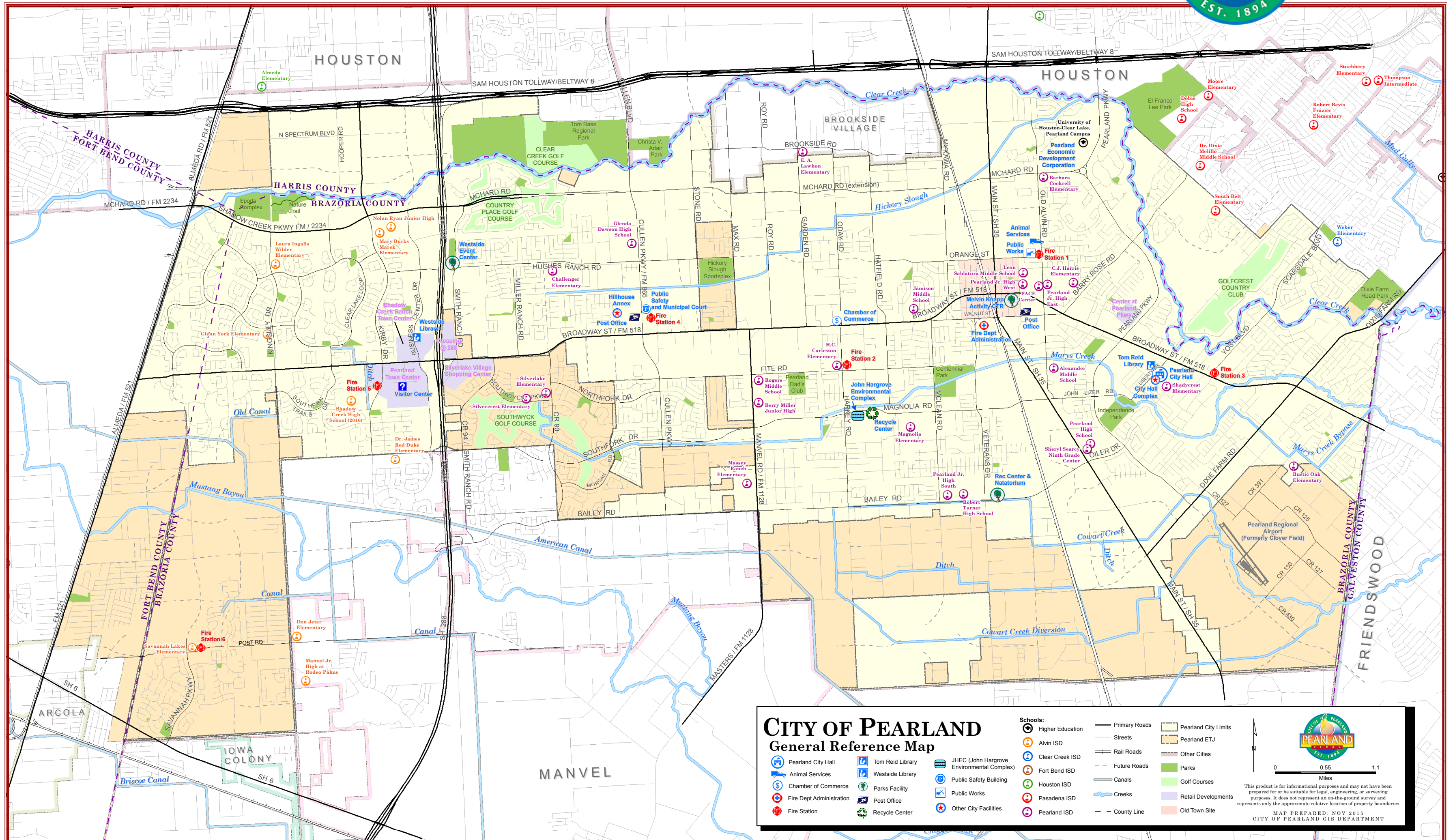


City of Pearland Map





Pearland at a Glance...



GENERAL AREAS

- Downtown: 17 minutes
- Energy Corridor: 27 minutes
- Galleria / Uptown Park: 18 minutes
- Galveston: 32 minutes
- Medical Center: 13 minutes
- Museum District: 12 minutes

TRANSPORTATION

- George Bush Intercontinental (IAH): 33 minutes
- Ellington Field (EFD): 6 minutes
- Metro Light Rail: 9 minutes
- Pearland Regional (LVJ): in Pearland
- Port of Freeport: 58 minutes
- Port of Houston Authority: 20 minutes
- Port of Houston: 29 minutes
- William P. Hobby (HOU): 11 minutes

ATTRACTIONS

- 1 Battleship Texas: 23 minutes
- 2 BBVA Compass Stadium: 14 minutes
- 3 George R. Brown Convention Center: 14 minutes
- 4 Kemah Boardwalk: 26 minutes
- 5 Minute Maid Park: 14 minutes
- 6 Moody Gardens: 37 minutes
- 7 NASA Johnson Space Center: 16 minutes
- 8 NRG Stadium: 9 minutes
- 9 San Jacinto Monument: 22 minutes
- 10 Toyota Center: 13 minutes

UNIVERSITIES

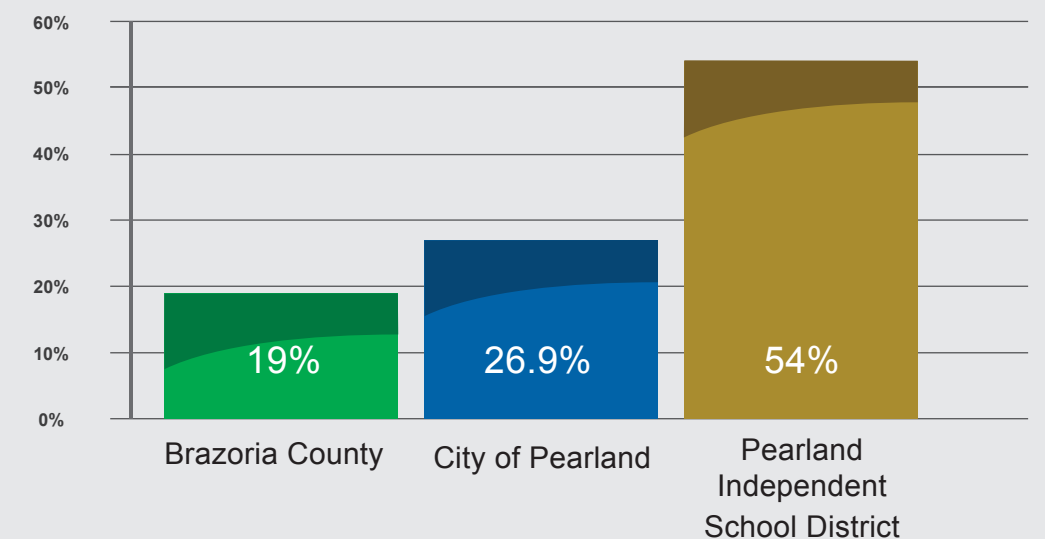
- 11 Rice University: 20 minutes
- 12 University of Houston: 13 minutes
- 13 University of Houston Clear Lake - Main Campus: 17 minutes

Where our local property tax dollars are invested

Ever wonder where your tax dollars go? The City of Pearland collects 25.6 percent of the tax dollar while, the school and county you live in collect the remaining funds. Police, fire, parks and recreation, road construction and maintenance and major capital construction of public facilities including storm water systems and fire stations are funded by 27.1 cents on the total dollar collected by the City of Pearland.

Ad Valorem Property Taxes are placed on real property and tangible personal property. Real property includes land, building, structures and improvements or fixtures annexed to the building or structure. Tangible personal property that is used for the production of income includes business inventories, machinery, equipment and furnishings.

The majority of the land area of the City of Pearland is in Brazoria County and either the Pearland or Alvin Independent School Districts. There are also smaller portions of the city that are located in either Harris and Fort Bend Counties and in other taxing jurisdictions such as Municipal Utility Districts.



THE CITY OF PEARLAND OFFERS AN EXCELLENT BENEFITS PACKAGE INCLUDING:

Interested in working for the
City of Pearland?

Pearland is a growing community with opportunities for everyone. The City is proud of our diverse workforce and would like to be part of your job search. We are looking for experienced people wanting to make a difference in their community. We have full-time and part-time jobs available.

- A voluntary ICMA 457 deferred compensation program, as well as
- Membership in the Texas Municipal Retirement System (TMRS)
- Group Health, Dental and Vision Care Plan
- Life and AD&D and Long-Term Disability
- Vacation after 6 months of employment
- Employee Assistance Program
- Flexible Spending Program

The City is the innovative leader for delivery of quality services with the following Core Values:

Responsive, Results-Oriented, Trust-Builders, and Accountable.

Visit pearlandtx.gov to learn more about available opportunities.



pearlandtx.gov